

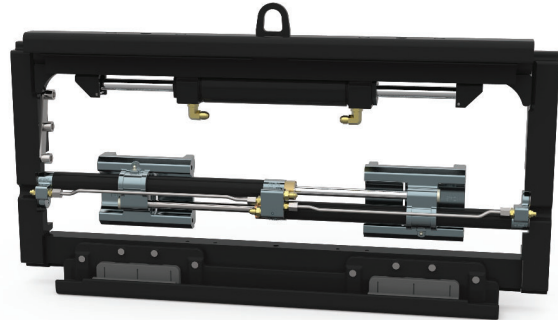


## HI-VISIBILITY & WIDE LOWER HOOK OPTIONS

Available for K-Series Fork Positioners and F-Series Sideshifters.

### INCREASED FLEXIBILITY FOR YOUR FORK POSITIONER

The high-visibility option for the 55K-FPS heightens the attachment's center window visibility by moving the mechanism lower in the frame. Designed for a wide range of applications, including for use with carriage plate scales.

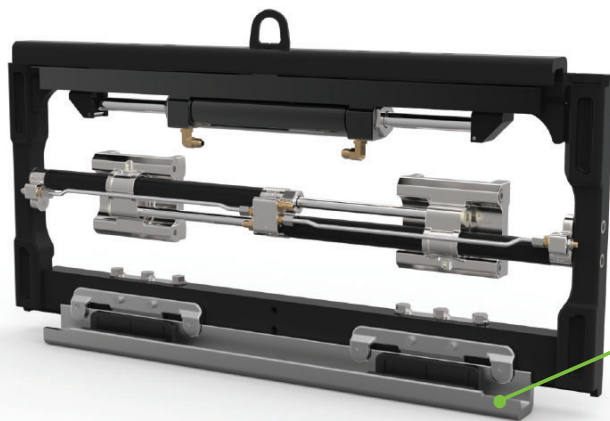


High-Visibility 55K-FPS

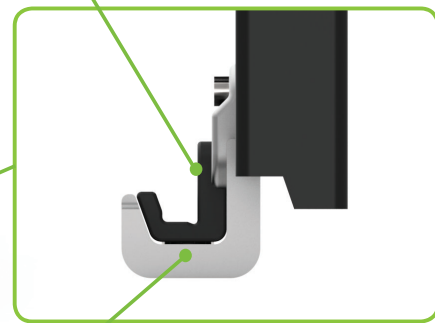
### Wide Lower Hook: A SOLUTION TO KEEP YOU MOVING

The challenges of long loads and reverse loading are easily handled through the superior carriage engagement and even under-clearance provided by the Wide Lower Hook (WLH). Your truck's carriage is protected by wrap around bearings unique to the single piece design.

Installed from the front, positive carriage engagement is easily accomplished with shimmable lower hooks. Available on K-Series Fork Positioners as well as F-Series Sideshifters.



Bearing wraps three faces of ITA profile, protecting the carriage from wear



Shimmable lower bearing for positive carriage engagement.