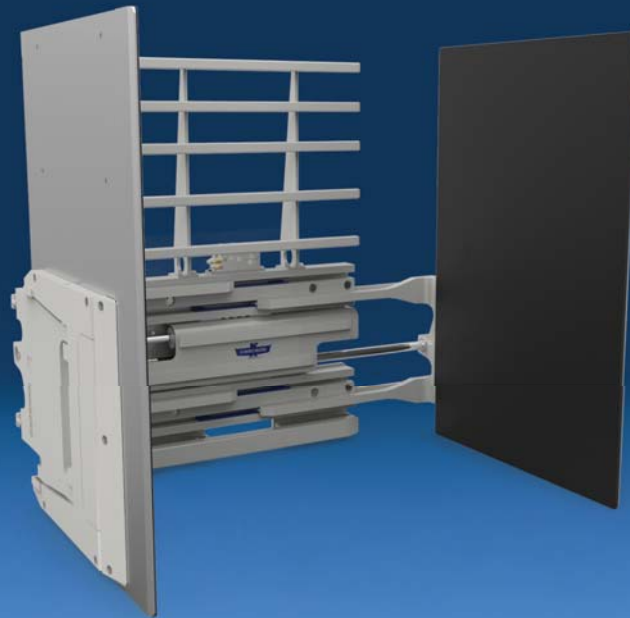


# Bring Palletless Handling to your Operation



Thin arm profile provides easy breakout.



Rubber faced contact pads for optimal friction.



Optional quick disconnect mounting for fast install.



Optional Load Cushion for improved handling.



Arm-slide bearing material extends bearing life.

## APPLICATIONS

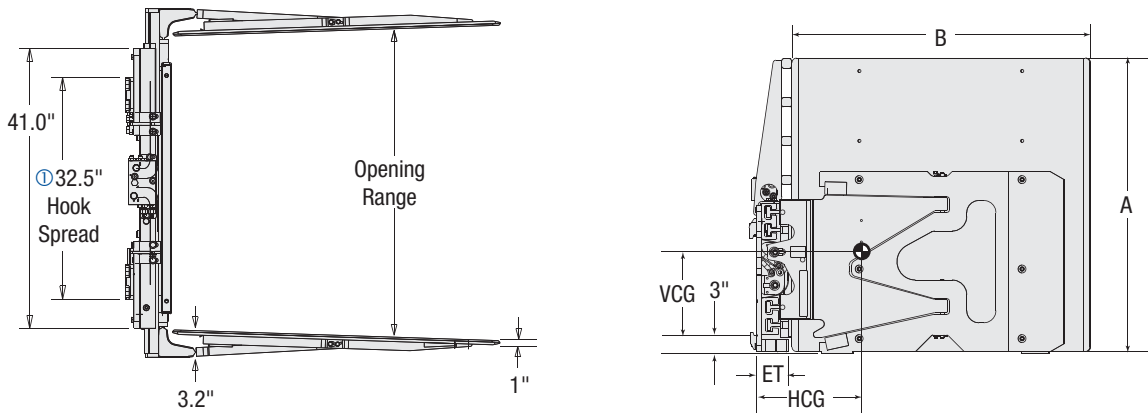
Achieve all the benefits of palletless handling of unitized loads in your manufacturing and distribution operation. Cascade's D-Series Carton Clamps allow efficient handling of a wide range of low-, medium- and high-density products including consumer paper products, appliances, consumer electronics, wine, packaged foods (canned or boxed), chemicals and plastics.

## OPTIONS

- Application specific contact pads (sizes & surfaces).
- Quick Disconnect mounting.
- Custom opening ranges.
- Tilt Control.
- Load Cushion.

## FEATURES

- Proven arm and aluminum frame construction ensures long useful life of the clamp.
- Unique pivoting arm and stabilizer design allows superior clamping force distribution for secure and damage free handling of a wide range of product types.
- Thin arm profiles allow for stacking loads tightly in the warehouse.
- Arm-slide bearing material and design extends bearing life and maintains balanced clamp force distribution.
- Rubber faced aluminum contact pads are standard and provide a high coefficient of friction to securely hold loads.
- Regenerative hydraulic valving is standard for optimal arm speed.



**Sideshifting**

Catalog Order No.	Capacity @ Load Center		Opening Range	Mtg. Class	Weight		Effective Thickness ET	Horizontal Ctr. of Gravity HCG	Vertical Ctr. of Gravity VCG	Arm Height A	Arm Length B
	lbs@in	kg@mm			lbs	kg					
25D-CCS-01A	2,500@15	1,135@380	22"-76" ②	II	1,110	503	5.0"	12.8"	12.9"	48"	30"
25D-CCS-35A	2,500@24	1,135@600	22"-76" ②	II	1,455	660	5.0"	16.9"	13.5"	48"	48"
35D-CCS-35A	3,500@24	1,590@600	22"-76" ②	II	1,540	699	5.0"	18.8"	14.3"	48"	48"
35D-CCS-37A	3,200@27	1,455@685	22"-76" ②	II	1,660	753	5.0"	21.3"	14.4"	48"	54"

**Cascade D-Series clamps are warranted for 24 months following date of installation.**

- ① Class II Bolt-On mounting is standard. Class III and Quick-Disconnect mounting also available at no charge. **Class III requires 38" minimum truck carriage width.**
- ② Published opening range limits are nominal clamp dimensions only and clamp may not accommodate loads with same or close to same dimension. Consult Cascade for further assistance.
- ▶ Front lower leading edge pad wear can be addressed by periodic replacement of the factory installed wear tiles. Contact Cascade Parts Department at 888-CASCADE (227-2233) for service kits. Cascade recommends using tilt control with all Carton Clamps.
- ▶ Can easily be converted to non-sideshifting by plugging ports on the valve.

**MOUNTING CLASS INFORMATION**

Mounting Class	Truck Capacity
II	2,000-5,500 lbs
III	6,000-10,000 lbs

**HYDRAULIC FLOW & PRESSURE**

Model	Maximum Pressure psi/bar	Number of Functions	Min-Rec-Max Function 1 (sideshift) gpm	Min-Rec-Max Function 2 (clamp) gpm
25D	2,300/159	2	1-3.0-8	5-5.5-8
35D	2,300/159	2	1-4.0 10	5-7.0-10

**HYDRAULIC FUNCTIONS**

Model	Hydraulic Functions	Truck Auxiliary Valves Required
25D/35D	2	2



Function 3/Sideshift Left  
Function 4/Clamp Right