

FK1079.ai

NOTE: If Totaling (Accumulation), pressing the “ON/PRINT” button will print the load’s weight information and then add the weight to the total weight. To print total weight, hold the “ON/PRINT” Button for three seconds, then, while indicator flashes press the “ON/PRINT” Button again.

The display indicator can be toggled between lbs and kg. Refer to Display Indicator Functions section. Printer output is in units selected during calibration.

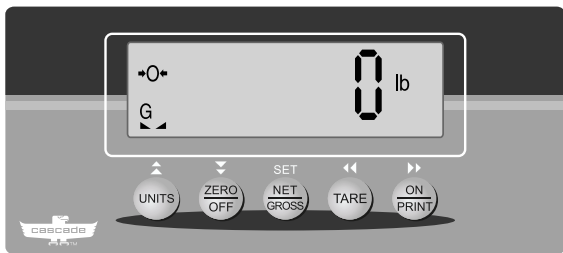
FK0972.ai

OPERATOR’S POCKET GUIDE

C-Series

Weigh Forks

DISPLAY INDICATOR FUNCTIONS



FK1080.ai

NOTE: For more information on display functions, refer to the C-Series Weigh Forks User Manual 8305557.

	Short Button Press	Long Button Press
	Toggle Units	N/A
	Zero	Turn Indicator Off
	Toggle between Gross & Net weight	N/A
	Establish or Cancel Tare Weight	N/A
	Print Weight	Turn Indicator On

Manual Number 8305558-R2



NO RIDERS



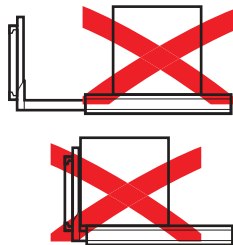
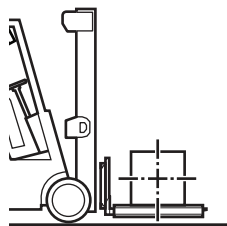
NO REACH THROUGH MAST



NO UNDER LOAD



LOAD HANDLING

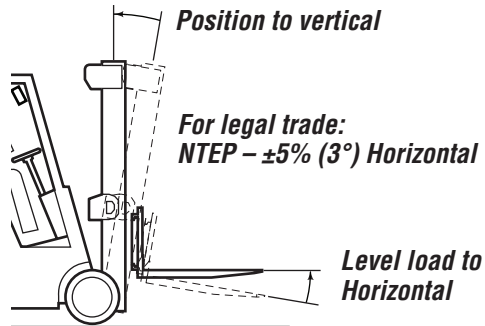


FK1081.ai

IMPORTANT:

- At initial daily start up, allow 3-5 minutes for the forks to warm up before weighing loads.
- The system will not weigh correctly if the front face or bottom of the forks touches the load and pallet.
- Unstable weight readings indicate debris between fork and fork shoe.

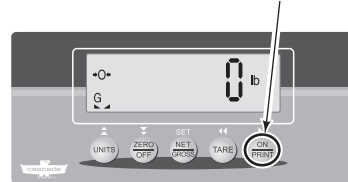
Preparing Mast for Weighing:



FK0140.eps

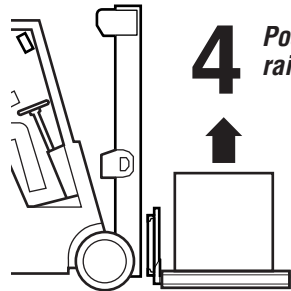
Working temperature range:
 -4° F (-20° C) minimum
 105° F (40° C) maximum

2 Press the "ON/PRINT" button. Wait 5 seconds.



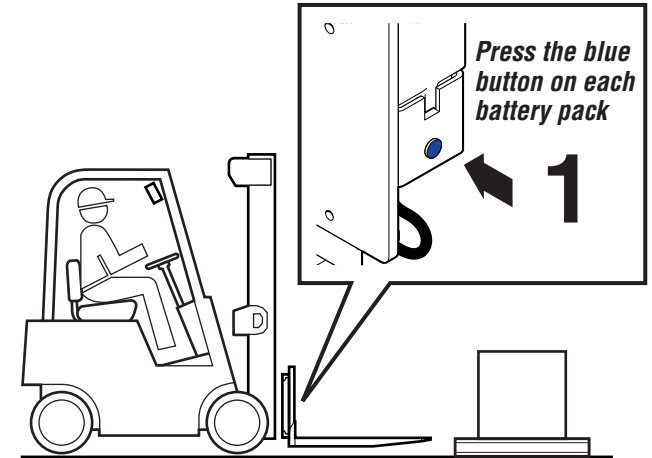
FK1083.ai

4 Position load on forks, raise forks



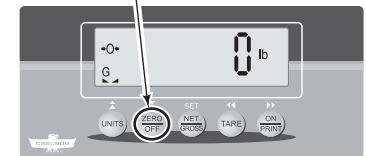
FK1085.ai

- When weighing liquids, more time is needed for indicator to show a steady weight.
- Do not exceed fork length by more than 6 in. (152 mm) with load length.



FK1082.ai

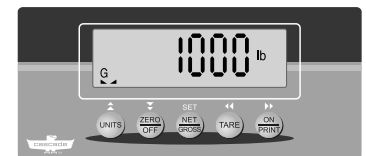
3 Display will zero. If necessary, zero manually. Verify forks are free of obstacles prior to zeroing.



FK1084.ai

The display indicator can be toggled between lbs and kg. Refer to Display Indicator Functions section in the user manual (part no. 8314244). Printer output is in units selected during calibration.

5 Weigh load. Before next weighing, check zero point.



FK1086.ai