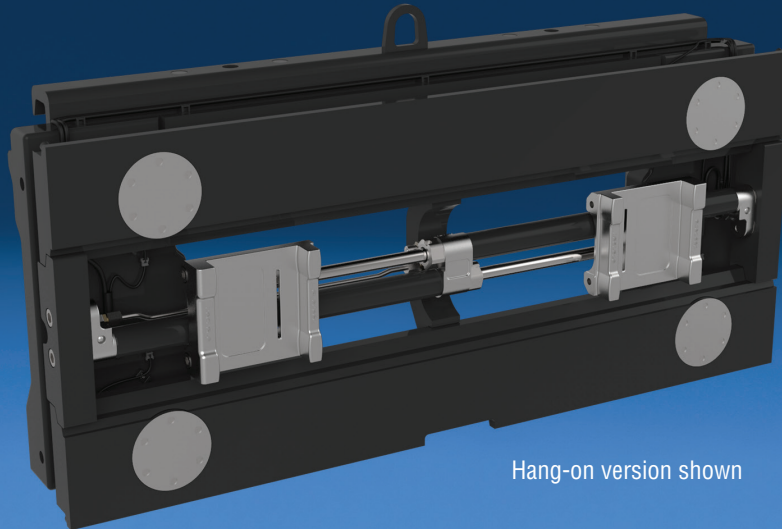
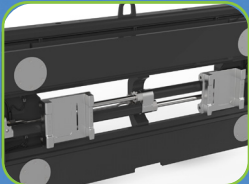


The complete weighing solution that maximizes capacity,  
saves time and improves maneuverability



Hang-on version shown



Excellent visibility window helps improve operator efficiency



Weighing, Sideshifting & Fork Positioning combined within a single unit. Allows for easy installation and connection



Cascade ActivWeigh carriage and sideshifting units accept most Cascade attachments on the front



Start transporting immediately and weight data is automatically recording



Display Indicator with bright backlit display and independent communication

## APPLICATIONS

The first of its kind – Cascade ActivWeigh™. One innovative attachment with the power of three. A combined Weighing Carriage, Sideshifter and Fork Positioner provide multiple operational benefits into one sleek patented design. Don't need all three? The ActivWeigh carriage model is available singularly with Sideshifting or Fork Positioning as additional options. Weigh-in-motion increases productivity and efficiency. Common uses include incoming goods control, overload prevention, dosing, filling, waste management, order picking and inventory control.

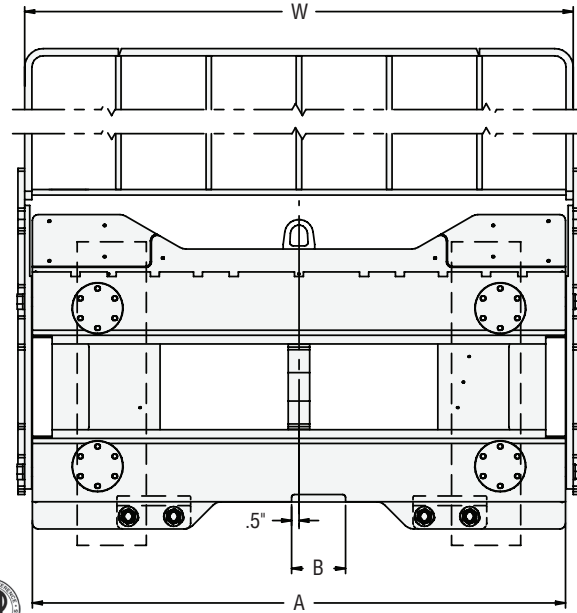
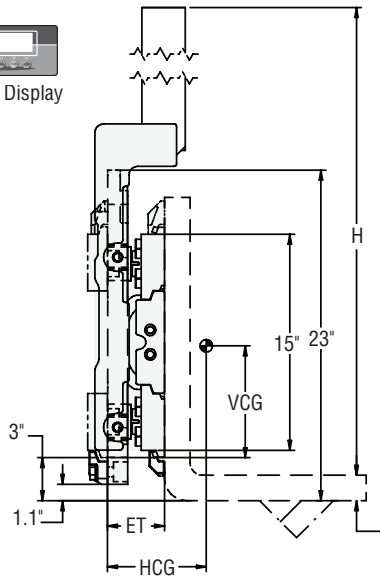
## OPTIONS

- Truck powered display available
- Thermal and dot matrix printers.
- Data transfer output devices, including:
  - RS232.
  - Wireless Bluetooth®
  - WLAN (Wi-Fi)
- Hang-on or Integral versions available.
- Forks not included with unit. Consult Cascade for fork lengths.

## FEATURES

- Quick installation and set up.
- Digital calibration for fast and easy adjustments.
- Rechargeable battery.
- Bright backlit LCD driver display with rechargeable batteries.
- Manual and automatic zero correction.
- Gross/Net weighing.
- Automatic push button tare.
- Automatic low voltage shut off.
- Manual tare entry totaling with sequence number.
- Displays both kg and lb units.
- 5-digit ID code entry.
- Piece counting by sampling or manual piece weight entry.
- Error indicator.
- Internal clock.
- All-In-One patented, clean and sleek design.
- Proven K-Series Fork Positioner with common components provides greater reliability.





## Hang-On

Catalog Order No.	Capacity@ 24" (600 mm) Load Center		Frame Width A	Minimum Truck Carriage Width in	Fork Loading Slot B	Load Backrest Height H	Load Backrest Width W	Weight lbs	Mtg. Class	Horizontal Center of Gravity HCG	Vertical Center of Gravity VCG	Effective Thickness ET
	lbs	kg										
Non-NTEP Approved: 0-2,000 lb with 2 lb display graduation; 2,001-5,500 lb with 5 lb display graduation - with 48" high load backrest												
25A-WCH-2A-0001	5,500	2,500	37.0"	35.2"	3.7"	48"	38"	442	II	2.3"	12.5"	3.9"
25A-WCH-2A-0002	5,500	2,500	40.2"	35.2"	3.7"	48"	41"	473	II	2.3"	12.6"	3.9"
25A-WCH-2A-0003	5,500	2,500	40.9"	35.2"	3.7"	48"	42"	480	II	2.3"	12.6"	3.9"
25A-WCH-2A-0004	5,500	2,500	42.0"	38.4"	3.7"	48"	43"	486	II	2.3"	12.6"	3.9"
① NTEP Approved: 0-2,000 lb with 2 lb display graduation; 2,001-5,500 lb with 5 lb display graduation - with 48" high load backrest												
25A-WCH-2A-0011	5,500	2,500	37.0"	35.2"	3.7"	48"	38"	442	II	2.3"	12.5"	3.9"
25A-WCH-2A-0012	5,500	2,500	40.2"	35.2"	3.7"	48"	41"	473	II	2.3"	12.6"	3.9"
25A-WCH-2A-0013	5,500	2,500	40.9"	35.2"	3.7"	48"	42"	480	II	2.3"	12.6"	3.9"
25A-WCH-2A-0014	5,500	2,500	42.0"	38.4"	3.7"	48"	43"	486	II	2.3"	12.6"	3.9"

① NTEP approved ActivWeigh units will need to be certified on-site by a local weights and measures authority per local statute in order to be considered legal for trade.

▼ NTEP – National Type Evaluation Program is a program administered by the National Conference on Weights and Measures (NCWM), which established a uniform set of criteria and test procedures for the evaluation of commercial weighing and measuring devices (Used for legal for trade applications).

▼ Contact Cascade for Weigh in Motion models.

▼ System is capable of accuracy within .1% of actual load weight. However, due to the display graduation limitations, the display may yield results outside the .1% range. Consult Cascade for details.

▼ Non NTEP models limited to 72" fork length.  
NTEP models limited to 48" fork length.

▼ Non NTEP models fork spacing maximum 49" OTO. NTEP models fork spacing maximum 38" OTO.

▼ Load length can not exceed the length of the fork by more than 6".

▼ Forks are not included with attachment.

▼ Integral versions available, contact Cascade.

▼ ActivWeigh units ship with battery powered driver display and mounting bracket.

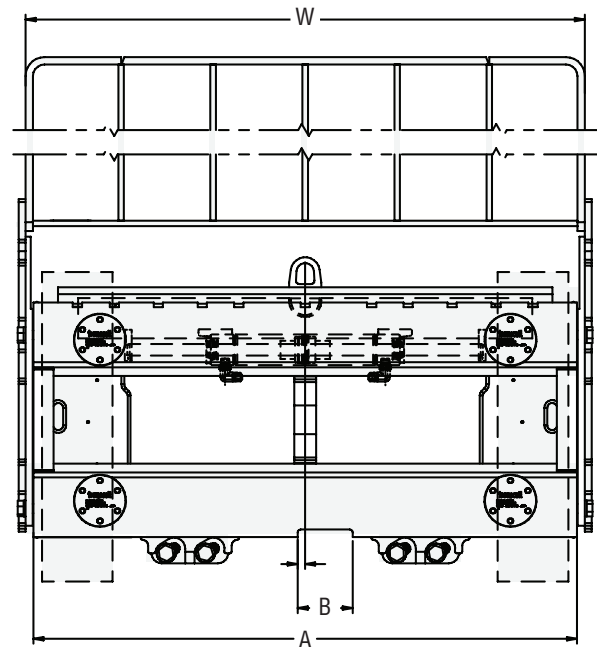
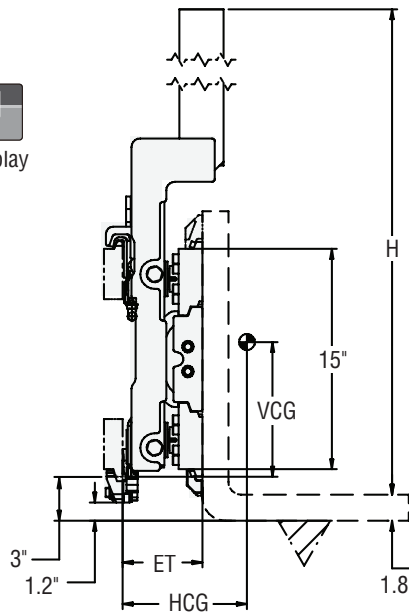
▼ Truck powered display (12V-80V) is available, see options page 11-1 for pricing and more information.

▼ Charger for scale included.

▼ The piece counting feature is not NTEP approved.

▼ Optimal temperature range is 15°F - 105°F.

▼ Ingress protection IP65. Do not pressure wash.



## Hang-On

Catalog Order No.	Capacity@ 24" (600 mm) Load Center	Frame Width	Minimum Truck Carriage Width	Total Sideshift Available	Fork Loading Slot	Load Backrest Height	Load Backrest Width	Weight	Mtg. Class	Horizontal Center of Gravity	Vertical Center of Gravity	Effective Thickness	
	lbs	kg	A	in	B	H	W	lbs		HCG	VCG	ET	
Non-NTEP Approved: 0-2,000 lb with 2 lb display graduation; 2,001-5,500 lb with 5 lb display graduation - with 48" high load backrest													
25A-WHS-2A-0001	5,500	2,500	37.0"	35.2"	8.0"	3.7"	48"	38"	455	II	3.1"	12.3"	5.4"
25A-WHS-2A-0002	5,500	2,500	40.2"	35.2"	8.0"	3.7"	48"	41"	488	II	3.1"	12.4"	5.4"
25A-WHS-2A-0003	5,500	2,500	40.9"	35.2"	8.0"	3.7"	48"	42"	493	II	3.1"	12.3"	5.4"
25A-WHS-2A-0004	5,500	2,500	42.0"	38.4"	8.0"	3.7"	48"	43"	502	II	3.1"	12.3"	5.4"
①NTEP Approved: 0-2,000 lb with 2 lb display graduation; 2,001-5,500 lb with 5 lb display graduation - with 48" high load backrest													
25A-WHS-2A-0011	5,500	2,500	37.0"	35.2"	8.0"	3.7"	48"	38"	455	II	3.1"	12.3"	5.4"
25A-WHS-2A-0012	5,500	2,500	40.2"	35.2"	8.0"	3.7"	48"	41"	488	II	3.1"	12.4"	5.4"
25A-WHS-2A-0013	5,500	2,500	40.9"	35.2"	8.0"	3.7"	48"	42"	493	II	3.1"	12.3"	5.4"
25A-WHS-2A-0014	5,500	2,500	42.0"	38.4"	8.0"	3.7"	48"	43"	502	II	3.1"	12.3"	5.4"

① NTEP approved ActivWeigh units will need to be certified on-site by a local weights and measures authority per local statute in order to be considered legal for trade.

▼ NTEP – National Type Evaluation Program is a program administered by the National Conference on Weights and Measures (NCWM), which established a uniform set of criteria and test procedures for the evaluation of commercial weighing and measuring devices (Used for legal for trade applications).

▼ Contact Cascade for Weigh in Motion models.

▼ System is capable of accuracy within .1% of actual load weight. However, due to the display graduation limitations, the display may yield results outside the .1% range. Consult Cascade for details.

▼ Non NTEP models limited to 72" fork length. NTEP models limited to 48" fork length.

▼ Non NTEP models fork spacing maximum 49" OTO. NTEP models fork spacing maximum 38" OTO.

▼ Load length can not exceed the length of the fork by more than 6".

▼ Forks are not included with attachment.

▼ Integral versions available, contact Cascade.

▼ ActivWeigh units ship with battery powered driver display and mounting bracket.

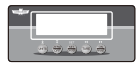
▼ Truck powered display (12V-80V) is available, see options page 11-1 for pricing and more information.

▼ Charger for scale included.

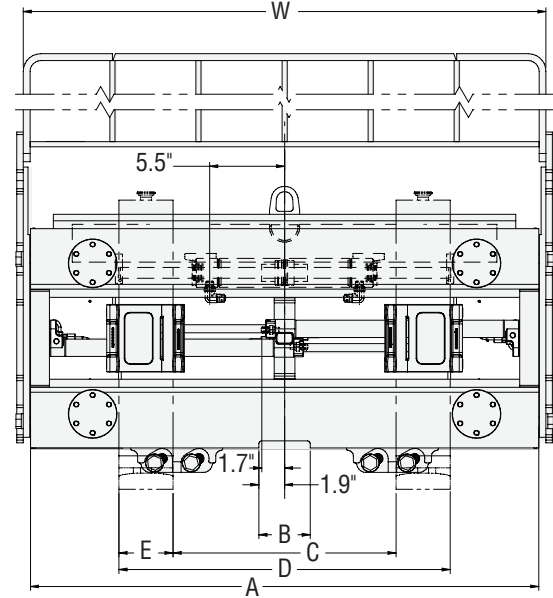
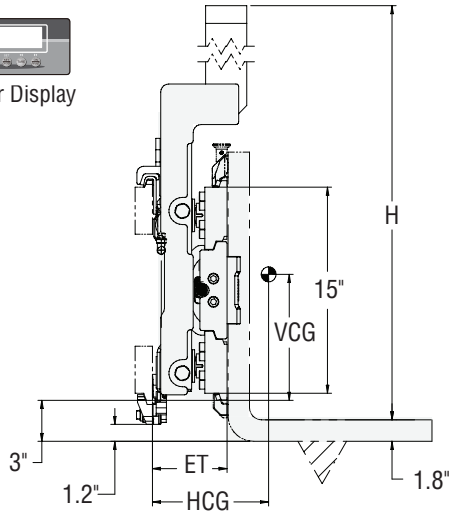
▼ The piece counting feature is not NTEP approved.

▼ Optimal temperature range is 15°F - 105°F.

▼ Ingress protection IP65. Do not pressure wash.



Driver Display



## Hang-On

Catalog Order No.	Capacity@ 24" (600 mm) Load Center	Frame Width	Minimum Truck Carriage Width	Total Sideshift Available	Fork Loading Slot	Fork Pocket Width	Opening Range In To Out	Load Backrest Height	Load Backrest Width	Weight	Mtg. Class	Horizontal Center of Gravity	Vertical Center of Gravity	Effective Thickness	
lbs	kg	A	in	in	B	E	C-D	H	W	lbs		HCG	VCG	ET	
Non-NTEP Approved: 0-2,12 lb display graduation; 2,001-5,500 lb with 5 lb display graduation - with 48" high load backrest															
25A-WHF-2A-0001	5,500	2,500	37.0"	35.2"	8.0"	3.7"	4.0"	2" - 32"	48"	38"	480	II	3.2"	12.0"	5.4"
25A-WHF-2A-0002	5,500	2,500	40.2"	35.2"	8.0"	3.7"	4.0"	2" - 35"	48"	41"	513	II	3.2"	12.1"	5.4"
25A-WHF-2A-0003	5,500	2,500	40.9"	35.2"	8.0"	3.7"	4.0"	2" - 36"	48"	42"	519	II	3.2"	12.1"	5.4"
25A-WHF-2A-0004	5,500	2,500	42.0"	38.4"	8.0"	3.7"	4.0"	2" - 37"	48"	43"	528	II	3.2"	12.0"	5.4"
①NTEP Approved: 0-2,12 lb display graduation; 2,001-5,500 lb with 5 lb display graduation - with 48" high load backrest															
25A-WHF-2A-0011	5,500	2,500	37.0"	35.2"	8.0"	3.7"	4.0"	2" - 32"	48"	38"	480	II	3.2"	12.0"	5.4"
25A-WHF-2A-0012	5,500	2,500	40.2"	35.2"	8.0"	3.7"	4.0"	2" - 35"	48"	41"	513	II	3.2"	12.1"	5.4"
25A-WHF-2A-0013	5,500	2,500	40.9"	35.2"	8.0"	3.7"	4.0"	2" - 36"	48"	42"	519	II	3.2"	12.1"	5.4"
25A-WHF-2A-0014	5,500	2,500	42.0"	38.4"	8.0"	3.7"	4.0"	2" - 37"	48"	43"	528	II	3.2"	12.0"	5.4"

- ① NTEP approved ActivWeigh units will need to be certified on-site by a local weights and measures authority per local statute in order to be considered legal for trade.
- ▼ NTEP – National Type Evaluation Program is a program administered by the National Conference on Weights and Measures (NCWM), which established a uniform set of criteria and test procedures for the evaluation of commercial weighing and measuring devices (Used for legal for trade applications).
- ▼ Contact Cascade for Weigh in Motion models.
- ▼ System is capable of accuracy within .1% of actual load weight. However, due to the display graduation limitations, the display may yield results outside the .1% range. Consult Cascade for details.
- ▼ Non NTEP models limited to 72" fork length. NTEP models limited to 48" fork length.
- ▼ Non NTEP models fork spacing maximum 49" OTO. NTEP models fork spacing maximum 38" OTO.
- ▼ Load length can not exceed the length of the fork by more than 6".
- ▼ Forks are not included with attachment.
- ▼ Integral versions available, contact Cascade.
- ▼ ActivWeigh units ship with battery powered driver display and mounting bracket.
- ▼ Truck powered display (12V-80V) is available, see options page 11-1 for pricing and more information.
- ▼ Charger for scale included.
- ▼ The piece counting feature is not NTEP approved.
- ▼ Optimal temperature range is 15°F - 105°F.
- ▼ Ingress protection IP65. Do not pressure wash.