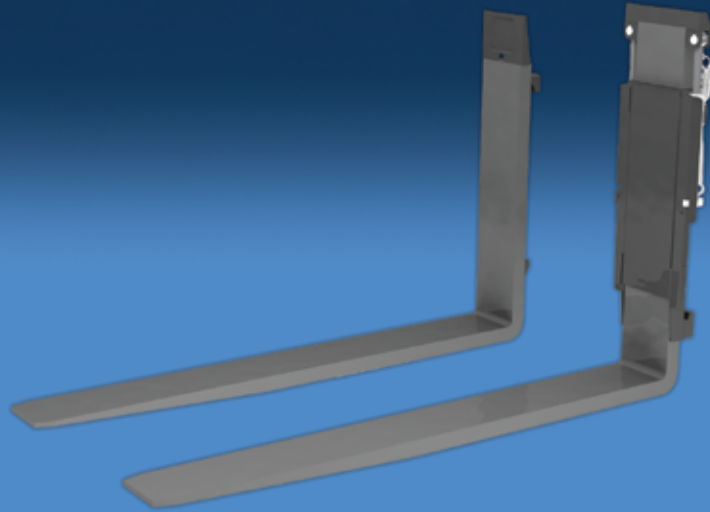


Secure Handling On Uneven Terrain



How do you cope if you have to transport goods on a slope, especially if you have long items that have to be moved like lumber? Unless special arrangements are made, the load will slide off the forks of the lift truck - possibly with disastrous consequences.

APPLICATION

The Single Height Shift System (SHSSL) can be used on most any type of forklift, including specialized lift trucks such as sideloaders, rough terrain forklifts and mountable lift trucks, allowing these machines to deliver loads, such as building materials, on uneven surfaces.

With the system one of the two forks can be raised or lowered by 4" to compensate for the difference in terrain, assisting to prevent the loads from moving on the forks. This added stability prevents loss of load and damage to loads when working on uneven terrain. Because the cylinders are fitted onto the sides of the vertical sections of the forks, the system does not add to the front dimensions and the lift truck retains an optimum residual load capacity.

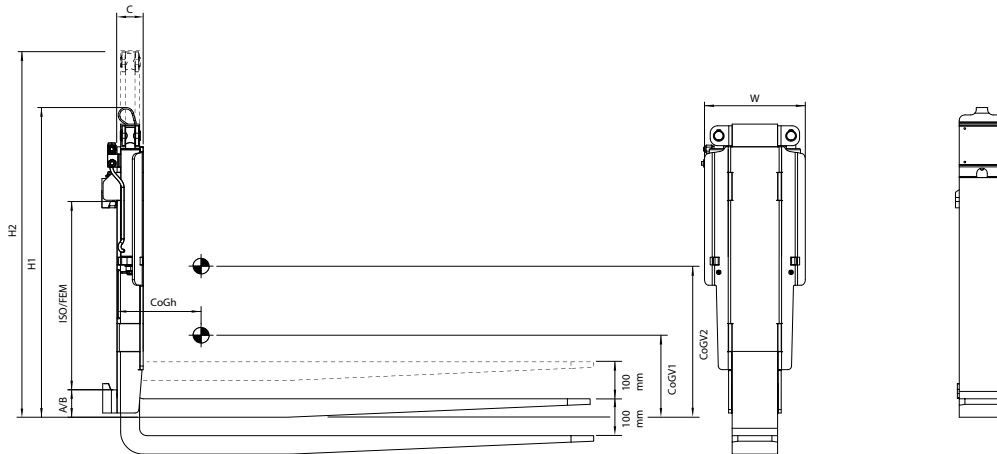
FEATURES

- Can be fitted to most any type of forklift.
- Very appropriate for operation in hilly and sloped terrain.
- Minimum lost load.

OPTION

When used in combination with Cascade-KOOI REACHFORKS® (hydraulic extendable forks) the Single Height Shift System (SHSSL) can be operated for one-sided loading and unloading. Additionally, one of the hydraulic forks can operate independently, making the forklift truck much more flexible.





Catalog Order No.	Capacity@ 24" (600 mm) Load Center		Vertical Movement up/down	Fork Length									Weight	
	lbs	kg			W	H1	C	CoGh	CoGv1	CoGv2	ISO	lbs	kg	
35A-SHS-3B-1204	7,700	3,500	3.9/3.9"	47.2"	10.6"	40.4"	2.7"	9.4"	10.8"	14.2"	3B	429	195	
45A-SHS-3B-1205	9,900	4,500	3.9/3.9"	47.2"	10.6"	40.4"	2.7"	10.0"	10.4"	14.0"	3B	462	210	
58A-SHS-3B-1505	12,775	5,800	3.9/3.9"	47.2"	11.0"	40.4"	2.7"	9.8"	10.2"	13.8"	3B	561	255	
65A-SHS-4B-1306	14,300	6,500	3.9/3.9"	47.2"	11.8"	47.2"	3.1"	11.2"	9.8"	13.6"	4B	583	265	
77A-SHS-4B-2005	16,975	7,700	3.9/3.9"	47.2"	11.8"	47.2"	2.7"	9.3"	13.0"	16.5"	4B	825	375	
80A-SHS-4B-1506	17,625	8,000	3.9/3.9"	47.2"	11.8"	47.2"	3.1"	8.9"	13.4"	16.7"	4B	737	335	

- The lift truck manufacturer must determine the combined attachment and lift truck capacity.
- All necessary lift truck requirement to add the attachment will be given by Cascade-KOOI.
- Maximum capacity 17,625 Lbs on LC 24". All other capacities on request.
- Including standard lift truck forks. Also possible in combination with Cascade-KOOI REACHFORKS®.