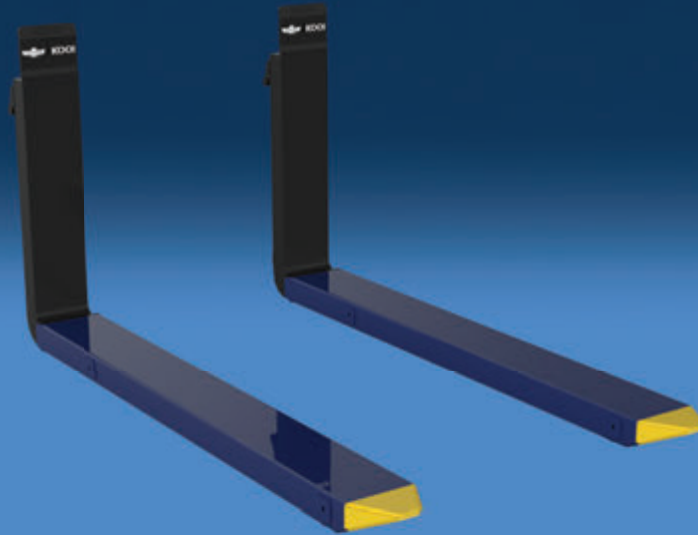


# The Simplicity of Manual Extension Forks



Extendable forks for efficient load handling and reduced operating costs.



Easily adjust by moving a pin and manually extending/retracting forks.



Innovative outer sleeve design does not catch on pallets and straps.



Standard ITA mounting & no hydraulic connections for easy compatibility.

## APPLICATION

Manual Cascade-KOOI Reachforks® stay on the forklift truck permanently, saving time, space and money compared to traditional fork extensions (outer-sleeves). This mechanical option is a simple solution with a prompt payback, making it ideal for low usage applications.

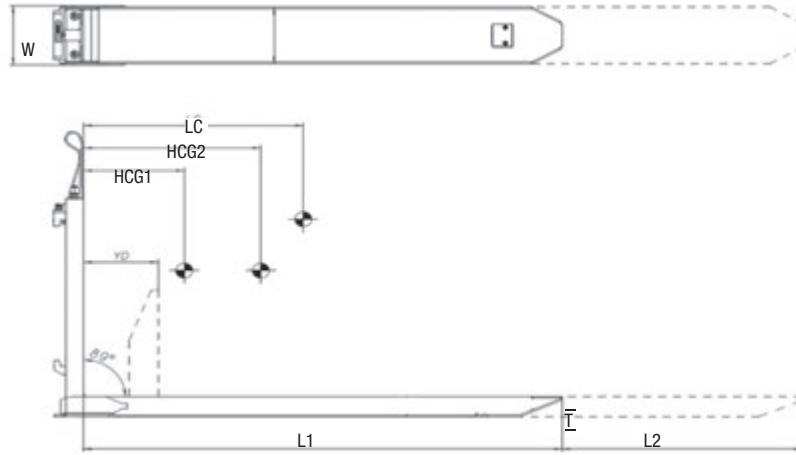
The manner of adjusting the outer sleeve is highly innovative. It simply involves moving a pin (which also serves as a grease nipple) sideways, causing the lock to be retracted. As soon as the lock is disengaged, the outer sleeve can be moved using the other hand until the lock engages again at the different length.

## FEATURES

- Remain mounted on the forklift truck so they are always available for the driver.
- Engineered for easy extension and retraction.
- Extends with just one simple movement.
- No hydraulics or loose parts to connect.
- Low maintenance costs.
- ISO ITA Class II, III, or IV mounting as standard for quick installation.

## OPTIONS

- Pin type, Drop Shank, and Custom mountings available.
- Additional fork length stops added upon request.
- Wear strips under forks to improve fork life.
- Readily available in a variety of standard lengths and strokes with custom lengths available as special order.



Catalog Order No.	Capacity@ 24" (600 mm) Load Center		Mtg. Class	Fork Thickness T	Fork Width W	Fork Length (Retracted) L1	Fork Length (Extended) L2	Stroke S	Horizontal Ctr. of Gravity HCG 1	Horizontal Ctr. of Gravity HCG 2	Weight (Per Pair)	
	lbs	kg									lbs	kg
<b>Manual Reachforks®</b>												
17A-TFM-2A-0802	3,740	1,700	II	1.6"	5.2"	31.5"	39.4"	7.9"	8.7"	9.6"	209	95
17A-TFM-2A-0804	3,740	1,700	II	1.6"	5.2"	31.5"	47.2"	15.7"	8.7"	9.6"	209	95
17A-TFM-2A-1000	3,740	1,700	II	1.6"	5.2"	39.4"	47.2"	7.9"	11.6"	12.4"	242	110
17A-TFM-2A-1200	3,740	1,700	II	1.6"	5.2"	47.2"	78.7"	31.5"	15.0"	19.7"	266	121
20A-TFM-2A-0802	4,400	2,000	II	2.3"	5.2"	31.5"	39.4"	7.9"	9.3"	11.6"	251	114
20A-TFM-2A-0804	4,400	2,000	II	2.3"	5.2"	31.5"	47.2"	15.7"	9.3"	11.6"	251	114
20A-TFM-2A-1000	4,400	2,000	II	2.3"	5.2"	39.4"	47.2"	7.9"	12.4"	16.3"	288	131
20A-TFM-2A-1200	4,400	2,000	II	2.3"	5.2"	47.2"	78.7"	31.5"	15.9"	21.5"	330	150
20A-TFM-2A-1400	4,400	2,000	II	2.3"	5.2"	55.1"	94.5"	39.4"	19.1"	25.2"	354	161
24A-TFM-2A-0802	5,290	2,400	II	1.8"	5.2"	31.5"	39.4"	7.9"	8.7"	10.8"	229	104
24A-TFM-2A-0804	5,290	2,400	II	1.8"	5.2"	31.5"	47.2"	15.7"	8.7"	10.8"	229	104
24A-TFM-2A-1000	5,290	2,400	II	1.8"	5.2"	39.4"	47.2"	7.9"	11.8"	12.8"	266	121
24A-TFM-2A-1200	5,290	2,400	II	1.8"	5.2"	47.2"	78.7"	31.5"	15.2"	20.3"	297	135
30A-TFM-3A-0802	6,600	3,000	III	2.3"	5.2"	31.5"	39.4"	7.9"	8.7"	10.8"	268	122
30A-TFM-3A-0804	6,600	3,000	III	2.3"	5.2"	31.5"	47.2"	15.7"	8.7"	10.8"	268	122
30A-TFM-3A-1000	6,600	3,000	III	2.3"	5.2"	39.4"	47.2"	7.9"	11.8"	12.8"	317	144
30A-TFM-3A-1200	6,600	3,000	III	2.3"	5.2"	47.2"	78.7"	31.5"	15.4"	20.3"	348	158
30A-TFM-3A-1400	6,600	3,000	III	2.3"	5.2"	55.1"	94.5"	39.4"	18.5"	25.4"	387	176
35A-TFM-3A-0802	7,700	3,500	III	2.5"	5.2"	31.5"	39.4"	7.9"	9.1"	11.8"	308	140
35A-TFM-3A-0804	7,700	3,500	III	2.5"	5.2"	31.5"	47.2"	15.7"	9.1"	11.8"	308	140
35A-TFM-3A-1000	7,700	3,500	III	2.5"	5.2"	39.4"	47.2"	7.9"	12.6"	15.4"	352	160
35A-TFM-3A-1200	7,700	3,500	III	2.5"	5.2"	47.2"	78.7"	31.5"	15.7"	21.7"	403	183
35A-TFM-3A-1400	7,700	3,500	III	2.5"	5.2"	55.1"	94.5"	39.4"	19.1"	26.8"	451	205

- The lift truck manufacturer must determine the combined attachment and lift truck capacity.
- All necessary lift truck requirement to add the attachment will be provided by Cascade-KOOI.
- Additional intermediate stops available upon request, consult Cascade.