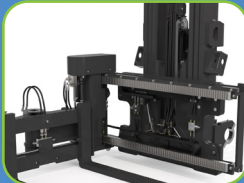
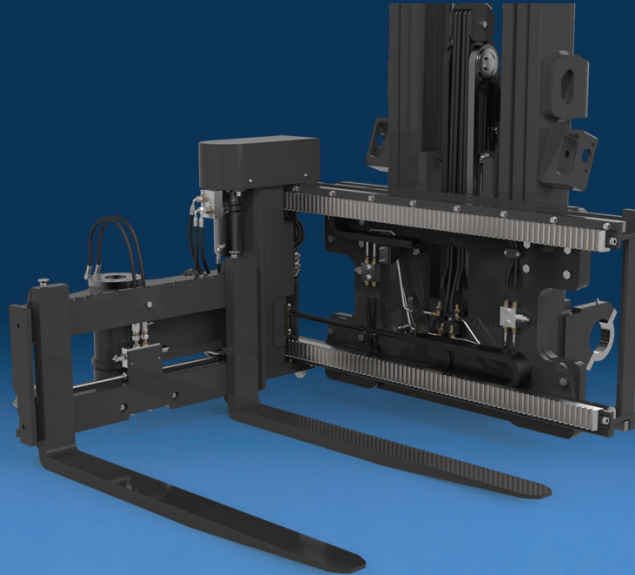


Precise Pallet Handling in Narrow Aisle Racking Systems



Adjustable racks, pinion and wear plate are heat treated for longer life



Motor with brake maintains the position of the load during the movement of the truck for secure handling



Increased mast channel overlap, additional thrust bearings, integral mounted all benefit residual mounting



Rotation rack cylinder with cushioned end of stroke reduces the impact at the end of swing stop



Engineered together, the Trilateral Head and Mast System improves overall stability

APPLICATIONS

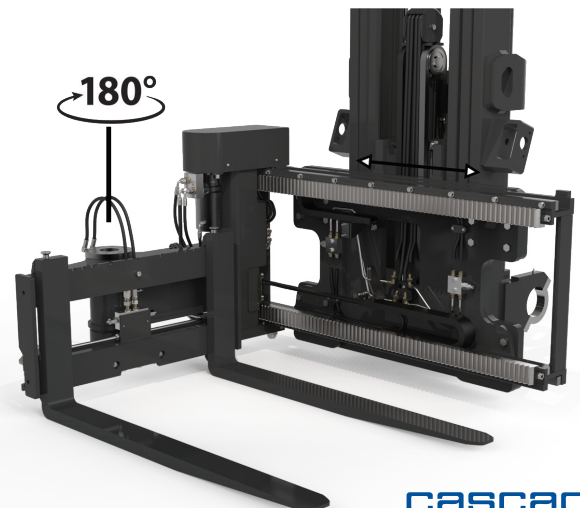
The Cascade Trilateral Head and Mast System is the perfect solution for handling pallets in applications with narrow aisle racking systems. The Trilateral Head attachment is designed for trucks being used in narrow aisle warehouses, featuring a traversing and rotating fork system allowing you to retrieve pallets on either side from shelving while your truck remains at a 90° angle to the load.

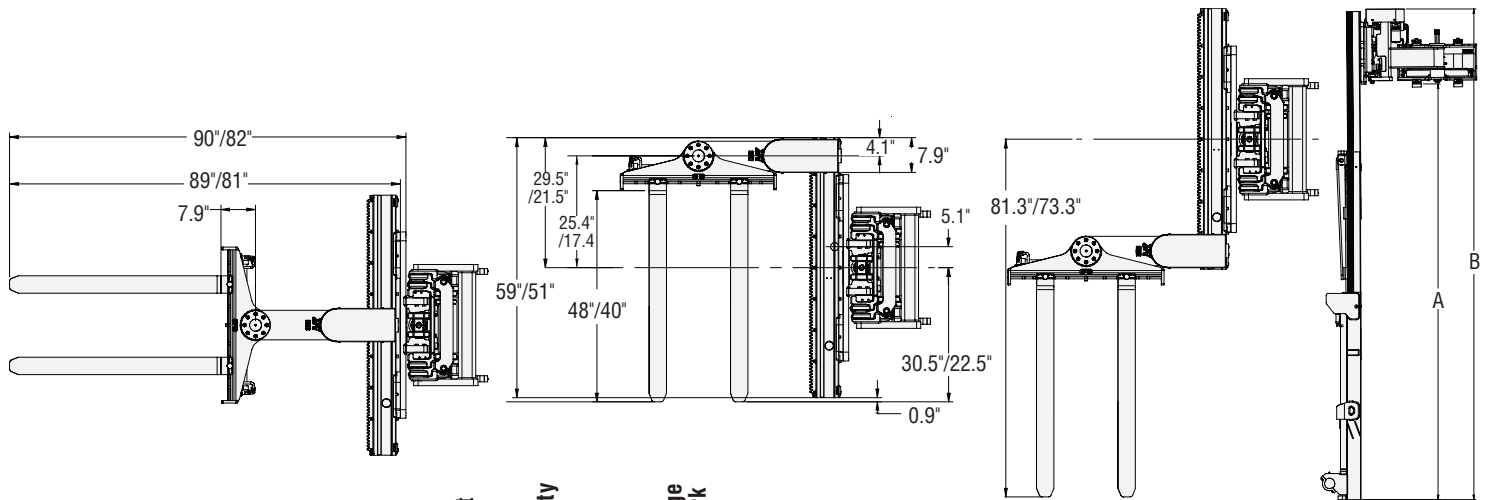
FEATURES

- Swing function and traversing fork system allows for handling loads from either center, left or right hand of the truck.
- Uses Class 2 ITA fork mounting (*forks sold separately*).
- Motor brake maintains the position of the load during truck movement.
- Eccentric bearings allow for adjusting tolerance between rack & pinion for smooth operation.
- Racks and pinions heat treated to ensure longer life and reliability.
- Rotate cylinder includes D-stroke ends to prevent abrupt stops.
- Optimized design to allow easy and quick maintenance.
- Reduced mast deflection with increased load stability with increased mast channel overlap, additional thrust bearings, cross members and integral mounting.
- Attachment moves both side to side and head rotates 180° in narrow aisle environments.

OPTIONS

- Load backrest upon request.





Catalog Order No.	Maximum Fork Height (MFH)	Top Rack Height	Capacity @ 24" at Floor Level	Estimated capacity at Maximum Fork Height ①	Trilateral Head (12A-AST) Carriage Width & Ideal Fork Length	Ideal Pallet Size	Minimum Aisle Width	Mast Extended Height	Mast Lowered Height (OAL)	Free Lift	Underclearance	Horizontal Ctr. of Gravity	Vertical Ctr. of Gravity	Total Weight
	A	ft	lbs	lbs	in	LxW	in	B	in	in	in	HCG	VCG	lbs
12A-ASM-EM-0120	154"	12'	2,500	2,500 ①	51/40	40" X 40", 40" X 48"	59"	187"	86"	45"	3"	20.7"	27.6"	3,718
12A-ASM-EM-0125	154"	12'	2,500	2,500 ①	59/48	48" X 40"	67"	187"	86"	45"	3"	20.7"	27.4"	3,771
12A-ASM-EM-0130	166"	13'	2,500	2,500 ①	51/40	40" X 40", 40" X 48"	59"	199"	90"	49"	3"	20.5"	28.8"	3,778
12A-ASM-EM-0135	166"	13'	2,500	2,500 ①	59/48	48" X 40"	67"	199"	90"	49"	3"	20.5"	28.6"	3,831
12A-ASM-EM-0140	178"	14'	2,500	2,500 ①	51/40	40" X 40", 40" X 48"	59"	211"	94"	53"	3"	20.4"	30.0"	3,841
12A-ASM-EM-0145	178"	14'	2,500	2,500 ①	59/48	48" X 40"	67"	211"	94"	53"	3"	20.4"	29.8"	3,891
12A-ASM-EM-0150	190"	15'	2,500	2,400 ①	51/40	40" X 40", 40" X 48"	59"	223"	99"	58"	3"	20.2"	31.6"	3,914
12A-ASM-EM-0155	190"	15'	2,500	2,400 ①	59/48	48" X 40"	67"	223"	99"	58"	3"	20.2"	31.4"	3,963
12A-ASM-EM-0160	202"	16'	2,500	2,300 ①	51/40	40" X 40", 40" X 48"	59"	235"	104"	63"	3"	19.7"	34.1"	4,082
12A-ASM-EM-0165	202"	16'	2,500	2,300 ①	59/48	48" X 40"	67"	235"	104"	63"	3"	19.7"	33.9"	4,132
12A-ASM-EM-0170	214"	17'	2,500	2,200 ①	51/40	40" X 40", 40" X 48"	59"	247"	110"	69"	3"	19.5"	36.1"	4,172
12A-ASM-EM-0175	214"	17'	2,500	2,200 ①	59/48	48" X 40"	67"	247"	110"	69"	3"	19.5"	35.8"	4,221
12A-ASM-EM-0180	226"	18'	2,500	2,100 ①	51/40	40" X 40", 40" X 48"	59"	259"	116"	75"	3"	19.3"	38.1"	4,277
12A-ASM-EM-0185	226"	18'	2,500	2,100 ①	59/48	48" X 40"	67"	259"	116"	75"	3"	19.3"	37.9"	4,327
12A-ASM-EM-0190	238"	19'	2,500	2,000 ①	51/40	40" X 40", 40" X 48"	59"	271"	120"	79"	3"	19.1"	39.5"	4,337
12A-ASM-EM-0195	238"	19'	2,500	2,000 ①	59/48	48" X 40"	67"	271"	120"	79"	3"	19.1"	39.2"	4,386
12A-ASM-EM-0200	250"	20'	2,500	1,900 ①	51/40	40" X 40", 40" X 48"	59"	283"	124"	83"	3"	18.9"	40.9"	4,396
12A-ASM-EM-0205	250"	20'	2,500	1,900 ①	59/48	48L X 40W	67"	283"	124"	83"	3"	18.9"	40.6"	4,446
12A-ASM-EM-0210	262"	21'	2,500	1,800 ①	51/40	40" X 40", 40" X 48"	59"	295"	128"	87"	3"	18.9"	42.3"	4,456
12A-ASM-EM-0215	262"	21'	2,500	1,800 ①	59/48	48" X 40"	67"	295"	128"	87"	3"	18.9"	42.0"	4,505
12A-ASM-EM-0220	271"	22'	2,500	1,700 ①	51/40	40" X 40", 40" X 48"	59"	304"	132"	91"	3"	18.8"	43.7"	4,515
12A-ASM-EM-0225	271"	22'	2,500	1,700 ①	59/48	48" X 40"	67"	304"	132"	91"	3"	18.8"	43.4"	4,565
12A-ASM-EM-0230	286"	23'	2,500	1,600 ①	51/40	40" X 40", 40" X 48"	59"	319"	136"	95"	3"	18.7"	45.1"	4,575
12A-ASM-EM-0235	286"	23'	2,500	1,600 ①	59/48	48" X 40"	67"	319"	136"	95"	3"	18.7"	44.8"	4,625
12A-ASM-EM-0240	298"	24'	2,500	1,500 ①	51/40	40" X 40", 40" X 48"	59"	331"	140"	99"	3"	18.6"	46.5"	4,635
12A-ASM-EM-0245	298"	24'	2,500	1,500 ①	59/48	48" X 40"	67"	331"	140"	99"	3"	18.6"	46.2"	4,684

Cascade trilateral head and Mast offering is based on sit-down counter-balanced forklifts with capacity range of 6,500 lb to 7,500 lb.

① Actual attachment/truck net working capacities must be obtained from the lift truck manufacturer. Only capacity ratings obtained from the lift truck manufacturer may be entered on the trucks nameplate.

▼ Trilateral Head uses a bolt-on mounting to mast carriage for tighter connection and reduced effective thickness.

▼ OEM truck mounting may affect specifications slightly (*base specs provided above*).