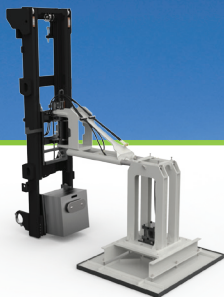
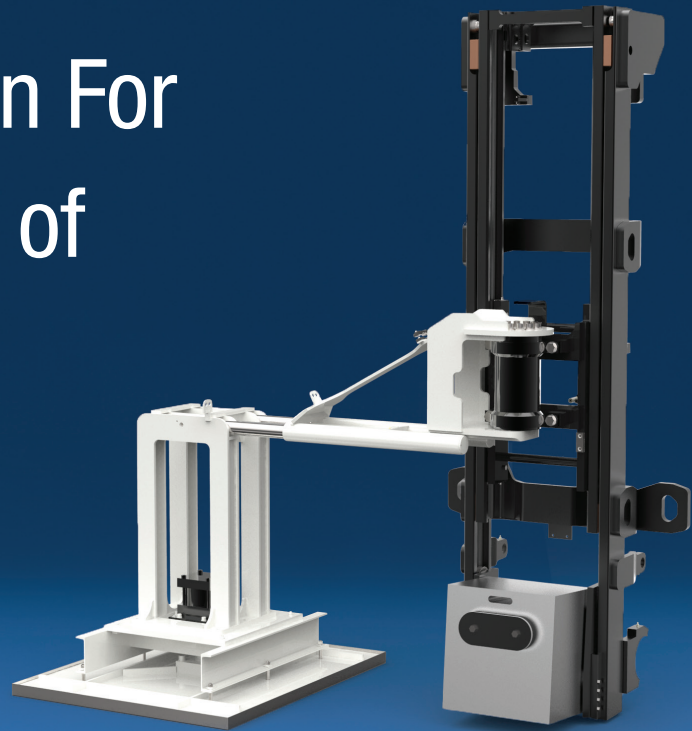


# The Perfect Solution For Moving Full Layers of Canned Goods.

Now available on all Layer Picker models.



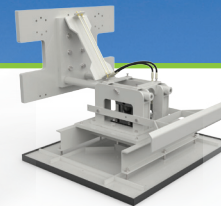
Swing Model



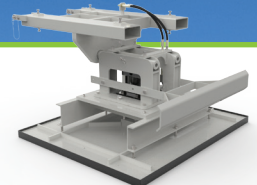
Swing Model  
Mono-Stage  
Mast



Stationary Side  
Mount



Carriage Mount



Fork Mount

## APPLICATIONS

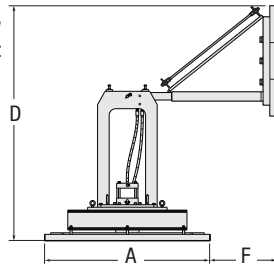
Build pallets using the magnetized platform to pick up/deposit single layers of metal product. Perfect for creating mixed pallets of canned goods that can't be clamped or other products with a metal top.

The Cascade Magnetic Layer Picker is designed primarily to remove an entire layer of cans at one time from a multi-layer stack of steel cans. The entire layer can be transferred to a new pallet and build a multi-layer mixed product pallet. The steel canned product may be of any variety containing many different products. Other products such as glass jars with steel lids or plastic pails with steel lids may also be moved with the Magnetic Layer Picker.

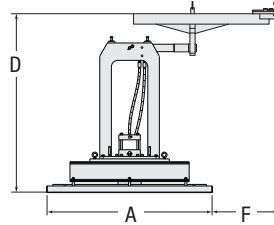
## HOW IT WORKS

Operation is quite simple, lower the assembly until the stripper pan contacts the layer to be handled. The hydraulic magnetic head is lowered to the holding position contacting the stripper pan. The Layer Picker is then raised, holding the cans magnetically as they are carried to the desired area. To release the can layer, the magnetic head is raised away from the stripper pan.

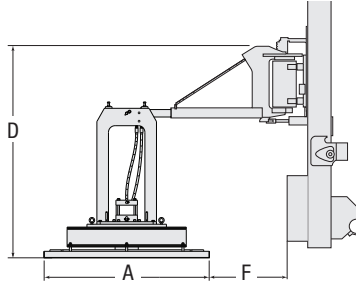
**Stationary Carriage Mount**



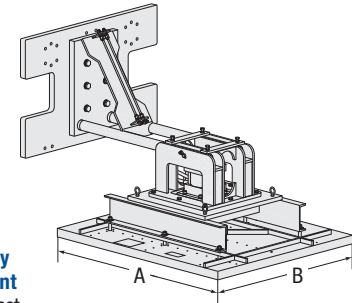
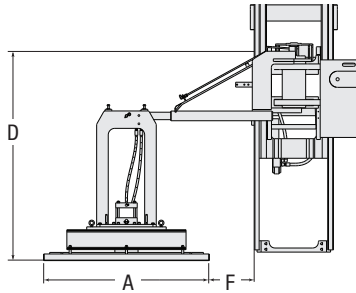
**Stationary Fork Mount**



**Swing Model**  
Special mast included.



**Stationary Side Mount**  
Special mast included.



**Note:** Protective boot not shown

Catalog Order No.	Capacity		Max Load Dimensions A x B	Stripper Pan Dimensions A x B	Weight Including Mast		Mounting Class	Overall Lowered Height	Lift Height	Overall Clamp Height D	Extension F
	lbs	kg			lbs	kg					
Swing Model											
2C-LMD-EM-0001	500	225	40" x 48"	44" x 52"	Consult	Cascade	N/A	113.7"	87.5"	71.6"	20.4"
Swing Model Mono Stage Mast											
2C-LMM-EM-0001	500	225	40" x 48"	44" x 52"	Consult	Cascade	N/A	191.0"	120.0"	71.6"	20.4"
Stationary Side Mount											
2C-LMN-EM-0001	500	225	40" x 48"	44" x 52"	Consult	Cascade	N/A	113.7"	87.5"	71.6"	20.4"
Stationary Front Carriage Mount											
2C-LMH-2-0001	500	225	40" x 48"	44" x 52"	Consult	Cascade	II/III	N/A	N/A	42.9"	2.5"
Stationary Front Fork Mount											
2C-LMF-F-0001	500	225	40" x 48"	44" x 52"	Consult	Cascade	slip-on	N/A	N/A	34.0"	9.9"

- Attachment capacity is a structural rating only. The type of product to be handled as well as the operating conditions must be considered to determine the working capacity for each application. Actual attachment/truck net working capacities must be obtained from the lift truck manufacturer. Only capacity ratings obtained from the lift truck manufacturer may be entered on the truck's nameplate.
- Consult Cascade for factory installation of Layer Picker attachments which includes models supplied with masts.
- Completed pre-sale worksheet required at time of order.

## HYDRAULIC FLOW & PRESSURE

Function	Minimum Flow	Recommended Flow	Maximum Flow	Maximum Pressure
Boom	5 GPM	7 GPM	10 GPM	2300 psi/160 bar
Swing	2 GPM	3.5 GPM	5 GPM	2300 psi/160 bar
Clamp	5 GPM	7 GPM	10 GPM	2300 psi/160 bar
Hoist	7 GPM	11 GPM	15 GPM	2300 psi/160 bar

## HYDRAULIC FUNCTIONS

Model	Hydraulic Functions	Truck Auxiliary Valves Required
Swing/Standard	3	2
Swing/Additional Carriage	4	3
Stationary Side/Standard	2	1
Stationary Carriage/Standard	1	1
Stationary Fork/Standard	1	1

- 3-Function requires use of tilt valve and two additional auxiliary valves.
- 1-Function requires use of one auxiliary valve.