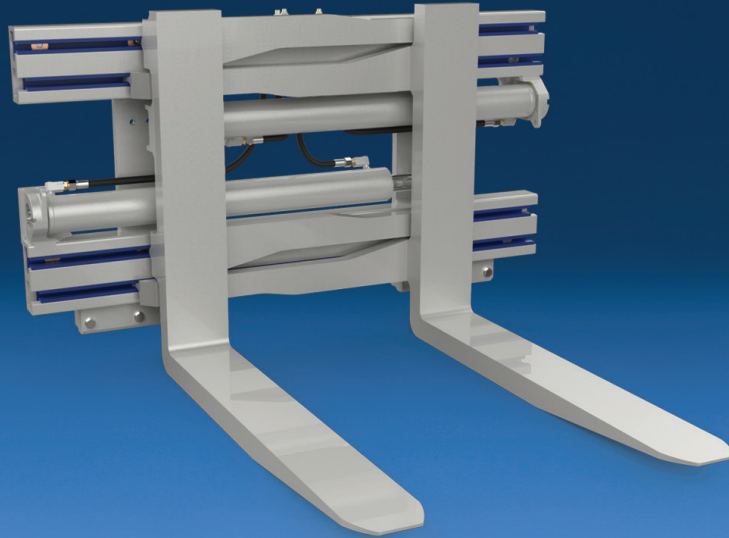
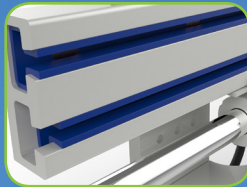


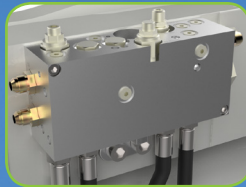
Industry Proven Fork Clamps for Versatile Load Clamping and Handling



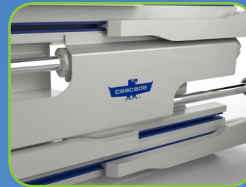
Carriage centering key for precise and secure mounting



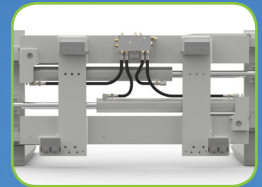
Lube-free, full-length lip over UHMW bearings provide superior durability and service life



Easy access valve with built in clamp protection



Optional cylinder bumper protects the hydraulic lines and cylinders from impact and debris



Industry leading visibility through frame

APPLICATIONS

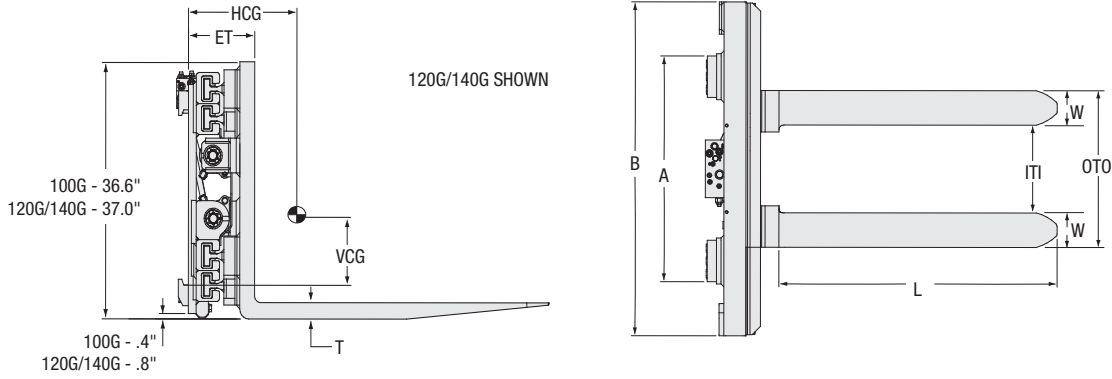
G-Series Fork Clamps are ideal for clamping a variety of loads including crates, bales and tires, even at extended opening ranges. G-Series Fork Clamps allow the truck operator to quickly reposition the forks to fit varying pallet or container configurations. Ideal for food processing, automotive manufacturing, recycling, foundries and general manufacturing operations.

FEATURES

- Available for both high and low pressure hydraulic systems (100G).
- Lube-free, full-length UHMW bearings for long life.
- Overclamp protection relief.
- Two-way backhand relief (sideshift and clamp open circuits).
- Top-mounted cartridges and test ports in valve for ease of service.
- Flow divider for equal arm movement.
- High-strength, hot extruded steel frame.
- Carriage centering key for precise and secure mounting.
- Rugged lightweight construction for maximum capacity retention.
- Bolt-on forks for easy replacement or removal.
- Smooth high-speed performance.
- Bolt-on, frame wear strips with front facing hardware provides maximum protection and easy replacement.
- Industry leading visibility.
- Maximized clamp force for secure load handling.

OPTIONS

- Custom opening ranges.
- Custom frame widths.
- Custom fork types and sizes.
- Custom high pressure hydraulic system (120G/140G).
- Various mounting options available.
- Quick-Disconnect lower hooks.
- Steel hydraulic valve guard.
- Cylinder protection bumper.
- Clamp Open Guard.
- Consult Cascade for customized solutions to fit your application.



Catalog Order No.	Clamp Capacity@ 24" (600 mm) Load Center		Opening Range		Hook Spread A	Overall Width		Fork Size LxWxT	Weight		Effective Thickness ET	Horizontal Ctr. of Gravity HCG	Vertical Ctr. of Gravity VCG	Mounting Class ①
	lbs	kg	ITI	OTO		B	lbs		kg					
Low Pressure Models (Truck Operating Pressures Up To 2,760 psi)														
100G-CFS-4A-0005	8,800	4,000	16.5"-70.9"	28.3"-82.7"	40.0"	49.2"	48"x 6"x 2.4"	1,989	904	10.4"	8.2"	10.9"	IV	
100G-CFS-4A-0010	8,800	4,000	16.5"-70.9"	28.3"-82.7"	40.0"	49.2"	60"x 6"x 2.4"	2,084	947	10.4"	10.3"	10.3"	IV	
100G-CFS-4A-0015	8,800	4,000	16.5"-70.9"	28.3"-82.7"	40.0"	49.2"	72"x 6"x 2.4"	2,178	990	10.4"	12.7"	9.6"	IV	
100G-CFS-4A-0020	8,800	4,000	16.5"-77.1"	28.3"-88.9"	40.0"	57.1"	48"x 6"x 2.4"	2,081	946	10.4"	8.0"	11.1"	IV	
100G-CFS-4A-0025	8,800	4,000	16.5"-77.1"	28.3"-88.9"	40.0"	57.1"	60"x 6"x 2.4"	2,176	989	10.4"	10.0"	10.4"	IV	
100G-CFS-4A-0030	8,800	4,000	16.5"-77.1"	28.3"-88.9"	40.0"	57.1"	72"x 6"x 2.4"	2,273	1,033	10.4"	12.4"	9.8"	IV	
High Pressure Models (Truck Operating Pressures Over 2,760 psi)														
100G-CFS-4A-0006	8,800	4,000	16.5"-70.9"	28.3"-82.7"	40.0"	49.2"	48"x 6"x 2.4"	1,947	885	10.4"	8.3"	10.9"	IV	
100G-CFS-4A-0011	8,800	4,000	16.5"-70.9"	28.3"-82.7"	40.0"	49.2"	60"x 6"x 2.4"	2,042	928	10.4"	10.4"	10.2"	IV	
100G-CFS-4A-0016	8,800	4,000	16.5"-70.9"	28.3"-82.7"	40.0"	49.2"	72"x 6"x 2.4"	2,136	971	10.4"	12.9"	9.6"	IV	
100G-CFS-4A-0021	8,800	4,000	16.5"-77.1"	28.3"-88.9"	40.0"	57.1"	48"x 6"x 2.4"	2,042	928	10.4"	8.1"	11.0"	IV	
100G-CFS-4A-0026	8,800	4,000	16.5"-77.1"	28.3"-88.9"	40.0"	57.1"	60"x 6"x 2.4"	2,136	971	10.4"	10.1"	10.4"	IV	
100G-CFS-4A-0031	8,800	4,000	16.5"-77.1"	28.3"-88.9"	40.0"	57.1"	72"x 6"x 2.4"	2,231	1,014	10.4"	12.5"	9.8"	IV	
Low Pressure Models (Truck Operating Pressures Up To 2,760 psi)														
120G-CFS-CA1A	11,000	5,000	15.9"-81.5"	30.1"-95.7"	38.6"	57.1"	48" x 7" x 2.25"	2,387	1,085	10.6"	8.5"	11.1"	IV	
120G-CFS-CA15	11,000	5,000	15.9"-81.5"	30.1"-95.7"	38.6"	57.1"	60" x 7" x 2.25"	2,490	1,132	10.6"	10.6"	10.4"	IV	
120G-CFS-CC1A	11,000	5,000	14.0"-81.5"	28.1"-95.7"	38.6"	61.0"	48" x 7" x 2.25"	2,438	1,108	10.6"	8.4"	11.1"	IV	
120G-CFS-CC15	11,000	5,000	14.0"-81.5"	28.1"-95.7"	38.6"	61.0"	60" x 7" x 2.25"	2,539	1,154	10.6"	10.5"	10.5"	IV	
120G-CFS-CA2A	11,000	5,000	22.2"-95.7"	36.4"-109.8"	38.6"	61.0"	48" x 7" x 2.25"	2,512	1,142	10.6"	8.3"	11.2"	IV	
120G-CFS-CC25	11,000	5,000	22.2"-95.7"	36.4"-109.8"	38.6"	61.0"	60" x 7" x 2.25"	2,614	1,188	10.6"	10.3"	10.6"	IV	
120G-CFS-CD2A	11,000	5,000	23.2"-100.8"	37.4"-115.0"	38.6"	63.0"	48" x 7" x 2.25"	2,561	1,164	10.6"	8.2"	11.3"	IV	
120G-CFS-CD25	11,000	5,000	23.2"-100.8"	37.4"-115.0"	38.6"	63.0"	60" x 7" x 2.25"	2,660	1,209	10.6"	10.2"	10.6"	IV	
120G-CFS-CA3A	11,000	5,000	25.5"-101.9"	39.7"-116.1"	38.6"	63.0"	48" x 7" x 2.25"	2,574	1,170	10.6"	8.2"	11.3"	IV	
120G-CFS-CD35	11,000	5,000	25.5"-101.9"	39.7"-116.1"	38.6"	63.0"	60" x 7" x 2.25"	2,673	1,215	10.6"	10.2"	10.6"	IV	
140G-CFS-CA15	14,000	6,350	15.9"-78.3"	30.1"-92.5"	42.5"	57.1"	60" x 7" x 2.5"	2,680	1,218	11"	10.9"	10.4"	IV	
140G-CFS-CA1A	14,000	6,350	15.9"-78.3"	30.1"-92.5"	42.5"	57.1"	48" x 7" x 2.5"	2,556	1,162	11"	8.8"	11.1"	IV	
140G-CFS-CC15	14,000	6,350	14.4"-81.9"	28.5"-96.1"	42.5"	61.0"	60" x 7" x 2.5"	2,735	1,243	11"	10.7"	10.5"	IV	
140G-CFS-CC1A	14,000	6,350	14.4"-81.9"	28.5"-96.1"	42.5"	61.0"	48" x 7" x 2.5"	2,616	1,189	11"	8.7"	11.2"	IV	
140G-CFS-CC25	14,000	6,350	21.8"-91.3"	35.9"-105.4"	42.5"	61.0"	60" x 7" x 2.5"	2,805	1,275	11"	10.6"	10.6"	IV	
140G-CFS-CA2A	14,000	6,350	21.8"-91.3"	35.9"-105.4"	42.5"	61.0"	48" x 7" x 2.5"	2,684	1,220	11"	8.6"	11.2"	IV	
140G-CFS-CD25	14,000	6,350	25.9"-97.2"	40.1"-111.4"	42.5"	63.0"	60" x 7" x 2.5"	2,873	1,306	11"	10.5"	10.7"	IV	
140G-CFS-CD2A	14,000	6,350	25.9"-97.2"	40.1"-111.4"	42.5"	63.0"	48" x 7" x 2.5"	2,752	1,251	11"	8.5"	11.3"	IV	
140G-CFS-CV35	14,000	6,350	25.6"-133.9"	39.8"-148.0"	66.9"	98.4"	60" x 7" x 2.5"	3,500	1,591	11"	9.3"	11.3"	IV	
140G-CFS-CV3A	14,000	6,350	25.6"-133.9"	39.8"-148.0"	66.9"	98.4"	48" x 7" x 2.5"	3,381	1,537	11"	7.6"	11.8"	IV	

① Custom mounting available (Class 5, pin-type, etc.)

▶ Valve configuration is RH Clamp, LH Sideshift (view from operator).
Optional reverse valve configuration available.

② Published opening range represents nominal clamp dimensions only and may not accommodate loads with same or close to same dimension. Consult Cascade for further assistance.