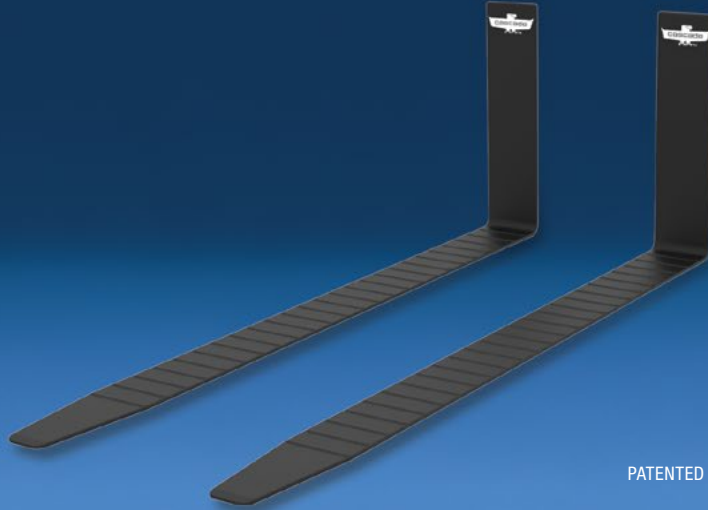


Versatile Slip Resistant Cover for a Wide Variety of Loads



PATENTED



Easy to manually install or remove in seconds



Sticks securely to forks



70 durometer (shore A) black rubber upper layer, a metal inner core and a bottom magnetic layer



Rib design provides additional coefficient of friction



Easily store on side of lift truck when not in use

APPLICATIONS

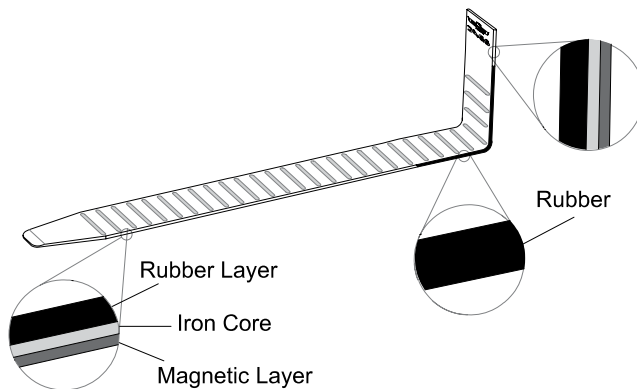
Cascade Magnetic Fork Covers - DAGS are ideal for handling a wide variety of loads. Designed for use in any industrial sector where products could be damaged from contact with bare forks. DAGS protect surfaces which are subject to scratching or wear, including powder-coated metal surfaces, anodized aluminum or wood products. When confronted with awkward or slippery loads like barrels, racks, metal boxes or cages, the lift truck driver can install the covers on the forks in a matter of seconds, improving stability and decreasing the chances of the load slipping off the forks.

OPTIONS

- Many different lengths to accommodate most forks.
- Available with edge guard.
- Special models available for telescopic forks.

FEATURES

- Easy to install or remove in seconds without any mechanical or electrical work.
- Sticks securely to forks.
- 70 durometer (shore A) black rubber upper layer, a metal inner core and a bottom magnetic layer.
- Resistant to abrasions, atmospheric agents and oil.
- Rib design provides additional coefficient of friction.
- Stores within easy reach on any flat surface on the forklift.
- Lightweight – does not limit truck's net capacity.
- Improves noise reduction.
- The magnetic field generated by the DAGS does not interfere with other electronic instruments.
- Temperature range from -22°F (-30°C) to 284°F (140°C).



| Catalog Order No. | Use with Fork Size WxL (in) | Thickness of DAGS T (in) | Weight (per pair) lbs kg | |
|-------------------------------|--------------------------------|-----------------------------|-----------------------------|------|
| Covers Blade and Shank | | | | |
| 6538417 ② | 3.2" x 36-54" | 1/4" | 15.4 | 6.9 |
| 6538260 | 4" x 42-48" | 1/4" | 11.9 | 5.3 |
| 6538262 | 4" x 48-54" | 1/4" | 14.1 | 6.3 |
| 6538264 | 5" x 42-48" | 1/4" | 15.4 | 6.9 |
| 6538265 | 5" x 48-54" | 1/4" | 17.6 | 7.9 |
| 6538412 | 6-8" x 42-48" | 5/16" | 19.4 | 8.7 |
| 6538413 | 6-8" x 48-54" | 5/16" | 22.1 | 10.0 |
| Covers Blade Only | | | | |
| 6538263 | 4" x 55-63" | 1/4" | 15.0 | 6.8 |
| 6538266 | 5" x 55-66.5" | 1/4" | 21.6 | 9.7 |
| 6538267 | 5" x 70-81" | 5/16" | 25.1 | 11.3 |
| 6538414 | 6" x 55-63" | 5/16" | 27.3 | 12.3 |
| 6538415 | 6-8" x 70-81" | 5/16" | 31.8 | 14.4 |
| 6538268 ① | 5" x 86.5-88.5" | 5/16" | 50.7 | 22.9 |
| 6538416 ① | 6-8 x 86.5-100 | 5/16" | 63.1 | 28.6 |

① Provided in two pieces for extra long blades

② With Edge Guard (see diagram)

▶ Sold through the Parts Depot. Call 888-CASCADE (227-2233)

