



Great visibility, fast rotation, increased payload for 3,000 - 5,500 lb. trucks

APPLICATIONS

30G and 40G Rotators are designed to give your driver the best possible visibility while quickly inverting loads. Cascade rotators are widely used in food processing, agriculture, recycling, automotive manufacturing, and general manufacturing operations where bins or tote boxes are used for both dumping and general handling requirements.

FEATURES

- **Proven Rugged Construction-** Cascade's gear drive box and ring gear design provides superior service life.
- **Center Bearing Seal-** locks out contamination and brine for extended life in fish & brine applications.
- **Visibility-** The G-Series Rotators provide superior visibility through the center, side, and over the top of the rotator.
- **Rotational Torque-** High torque motor, ensures smooth, positive rotation of the load.
- **Forks-** Rotators may be ordered with standard forks, custom forks or without forks.

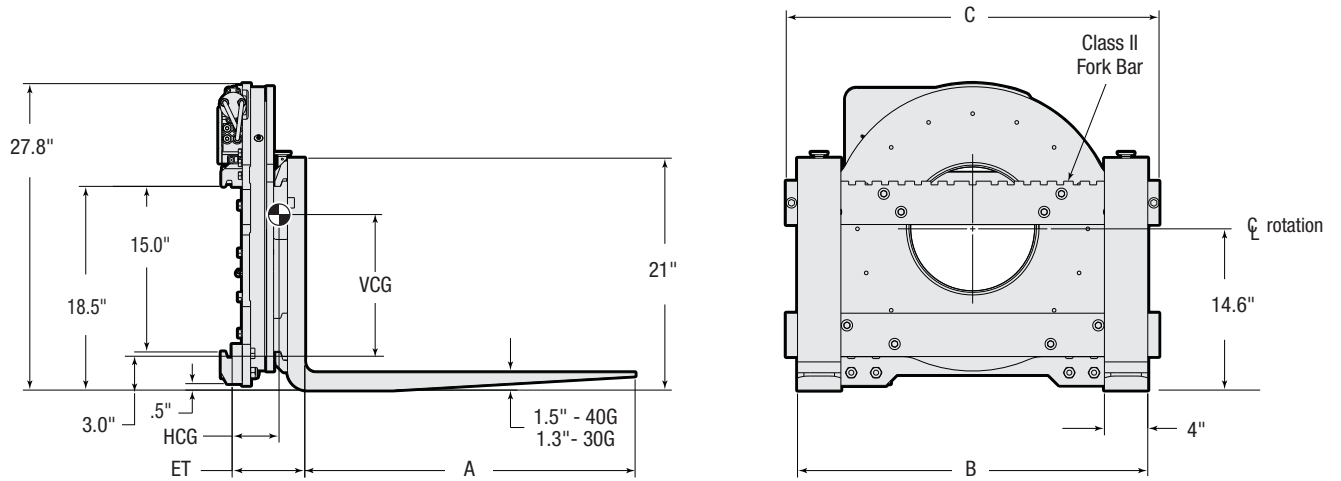
OPTIONS

- **180° Rotation Stop Group-** Used when stopping rotation at precisely 180° is desirable.
- **Customizable fork bars-** Allowing for application specific fork spread.
- **Quick-change Lower Mounting Hooks-** Allow the rotator to be removed or installed in a matter of minutes without tools. (Quick-change hydraulic couplers available separately)
- **Bin Retainer-** Custom designed to clamp on top of bin to hold bin in place while rotating. Typically used when bin does not have fork pockets.
- **Special fork sizes** and configurations available.
- **Side Stabilizers**
- **Fork Side Restraints**
- **Integrated Pressure Relief**



*Superior load
inverting and
dumping
versatility.*

30G/40G ROTATORS



360° Rotation

Capacity @ 24" Load Center (600 mm)		Fork Length	Maximum OTO Fork Spread	Catalog Order No.	Mfg. Class	Mfg. Angle	Min. Truck Carriage Width	Weight		Effective Thickness	Horizontal Ctr. of Gravity	Vertical Ctr. of Gravity	Overall Width
lbs	kg	A	B					lbs	kg	ET	HCG	VCG	C
3,000	1,365	w/o forks	32.0"	30G-RRB-10A	II	0°	25"	413	187	5.0"	2.5"	10.7"	33.9"
3,000	1,365	w/o forks	37.0"	30G-RRB-20A	II	0°	25"	425	193	5.0"	2.5"	10.6"	39.0"
3,000	1,365	30"	32.0"	30G-RRB-11A	II	0°	25"	547	248	6.3"	4.7"	8.8"	33.9"
3,000	1,365	30"	37.0"	30G-RRB-21A	II	0°	25"	560	254	6.3"	4.7"	8.8"	39.0"
3,000	1,365	36"	32.0"	30G-RRB-12A	II	0°	25"	566	256	6.3"	5.6"	8.5"	33.9"
3,000	1,365	36"	37.0"	30G-RRB-22A	II	0°	25"	578	262	6.3"	5.6"	8.5"	39.0"
3,000	1,365	42"	32.0"	30G-RRB-13A	II	0°	25"	584	265	6.3"	6.6"	8.1"	33.9"
3,000	1,365	42"	37.0"	30G-RRB-23A	II	0°	25"	596	271	6.3"	6.6"	8.1"	39.0"
3,000	1,365	48"	32.0"	30G-RRB-14A	II	0°	25"	603	273	6.3"	7.7"	7.8"	33.9"
3,000	1,365	48"	37.0"	30G-RRB-24A	II	0°	25"	615	279	6.3"	7.7"	7.8"	39.0"
4,000	1,815	w/o forks	32.0"	40G-RRB-10A	II	0°	25"	427	194	5.1"	2.5"	10.7"	33.9"
4,000	1,815	w/o forks	37.0"	40G-RRB-20A	II	0°	25"	440	200	5.1"	2.5"	10.7"	39.0"
4,000	1,815	30"	32.0"	40G-RRB-11A	II	0°	25"	582	264	6.6"	5.0"	8.7"	33.9"
4,000	1,815	30"	37.0"	40G-RRB-21A	II	0°	25"	594	269	6.6"	5.0"	8.7"	39.0"
4,000	1,815	36"	32.0"	40G-RRB-12A	II	0°	25"	603	273	6.6"	5.9"	8.3"	33.9"
4,000	1,815	36"	37.0"	40G-RRB-22A	II	0°	25"	615	279	6.6"	5.9"	8.3"	39.0"
4,000	1,815	42"	32.0"	40G-RRB-13A	II	0°	25"	624	283	6.6"	6.9"	8.0"	33.9"
4,000	1,815	42"	37.0"	40G-RRB-23A	II	0°	25"	636	288	6.6"	6.9"	8.0"	39.0"
4,000	1,815	48"	32.0"	40G-RRB-14A	II	0°	25"	645	293	6.6"	8.1"	7.7"	33.9"
4,000	1,815	48"	37.0"	40G-RRB-24A	II	0°	25"	657	298	6.6"	8.1"	7.7"	39.0"

INSTALLATION KIT

	Catalog Order No.
#6 JIC	659245

HYDRAULIC FUNCTIONS

Hydraulic Functions	Truck Aux. Valves Required
1	1

HYDRAULIC FLOW & PRESSURE

Minimum Flow	Recommended Flow	Maximum Flow	Maximum Pressure ^①
5 GPM	7.5 GPM	10 GPM	2300 psi

^① Specify optional pressure relief if truck auxiliary system exceeds 2300 psi.

ROTATOR SPECIFICATIONS

Model	Rotator Speed	Rotator Torque
30G ^②	8.3 RPM @ 10 GPM	36,000 inch-pounds
40G	7 RPM @ 10 GPM	40,000 inch-pounds

^② Optional motor providing increased torque is available. Reduced speed will result.

Cascade Corporation • PO Box 20187 • Portland, OR 97294-0187 • USA • 800 CASCADE (227.2233) • Tel 503.669.6257 • Fax 800.693.3768 • Fax 503.669.6367
 Cascade Canada Ltd. • 5570 Timberlea Blvd. • Mississauga, Ontario L4W 4M6 • Canada • 800.380.2272 • Tel 905.629.7777 • Fax 905.629.7785