

# **S**ERVICE MANUAL

---

## ***G-Series***

***Multiple Pallet Handler  
(Includes G2 Models)***

***Manual Number 6088640-R4***

**cascade<sup>®</sup>  
corporation**

Cascade is a Registered Trademark of Cascade Corporation

BLANK

# CONTENTS

---

	Page
<b>INTRODUCTION, Section 1</b>	
Introduction	1
Special Definitions	1
<b>PERIODIC MAINTENANCE, Section 2</b>	
Daily Inspection	2
1000-Hour Maintenance	2
2000-Hour Maintenance	3
<b>TROUBLESHOOTING, Section 3</b>	
General Procedures	4
Truck System Requirements	4
Tools Required	4
Troubleshooting Chart	4
Plumbing	5
Hosing Diagram	5
Circuit Schematic	5
Fork Position Function	6
Fork Position Circuit Test	6
Sideshift Function	7
Sideshift Circuit Test	7
<b>SERVICE, Section 4</b>	
Attachment Removal	8
Forks and Arms	9
Fork Removal	9
Inner Fork Spring Cylinder Service	9
Outer Fork and Arm Removal	10
Outer Arm Bearing Service	11
Inner Fork Carrier Service	13
Fork Tip Alignment	15
Inner Fork Control Service	16
Sideshift Cylinder	17
Cylinder Removal	17
Cylinder Disassembly	18
Cylinder Inspection	19
Cylinder Reassembly	19
Fork Cylinder	20
Cylinder Removal	20
Cylinder Disassembly	21
Cylinder Inspection	21
Cylinder Reassembly	22
Valve	23
Valve Removal	23
Valve Service	24
Base Unit	25
Sideshift Bearing Service	25
<b>SPECIFICATIONS, Section 5</b>	
Specifications	26
Hydraulics	26
Auxiliary Valve Functions	26
Truck Carriage	27
Torque Values	28

# INTRODUCTION

## 1.1 Introduction

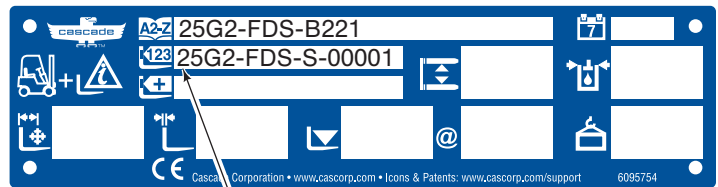
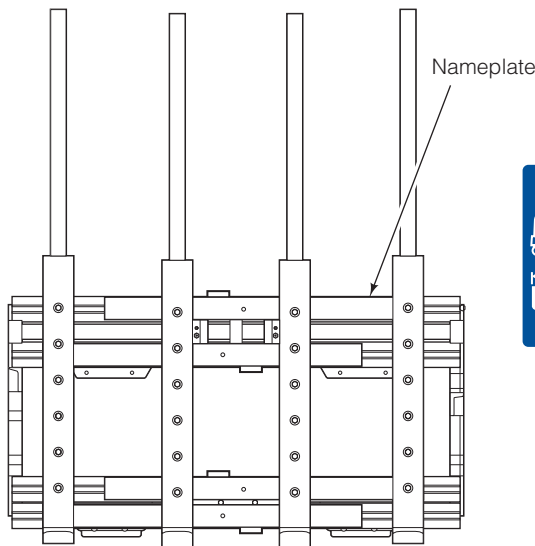
This manual provides the Periodic Maintenance, Troubleshooting, Service and Specifications for Cascade G-Series Multiple Load Handlers.

These attachments are designed for continuous duty operations with minimal maintenance. They offer exceptional visibility for the lift truck driver and provide optimized load handling.

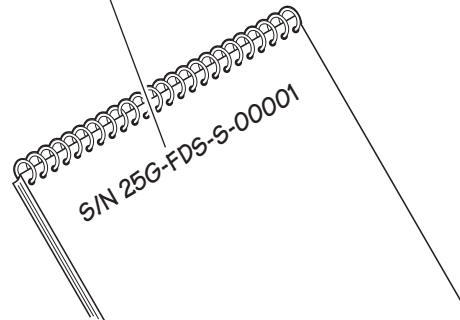
In any communication about the attachment, refer to the product catalog and serial numbers stamped on the nameplate. If the nameplate is missing, the numbers can be found stamped on the top left side (driver's view) of the frame.

**IMPORTANT:** All hoses, tubes and fittings on these attachments are SAE.

**NOTE:** Specifications are shown in both inch and (metric) units. All fasteners have a torque value range of  $\pm 10\%$  of stated value.




SD1126.eps



## 1.2 Special Definitions

The statements shown appear throughout this manual where special emphasis is required. Read all WARNINGS and CAUTIONS before proceeding with any work. Statements labeled IMPORTANT and NOTE are provided as additional information of special significance or to make your job easier.



**WARNING** - A statement preceded by WARNING is information that should be acted upon to prevent **bodily injury**. A **WARNING** is always inside a ruled box.

**CAUTION** - A statement preceded by CAUTION is information that should be acted upon to prevent machine damage.

**IMPORTANT** - A statement preceded by IMPORTANT is information that possesses special significance.

**NOTE** - A statement preceded by NOTE is information that is handy to know and may make your job easier.