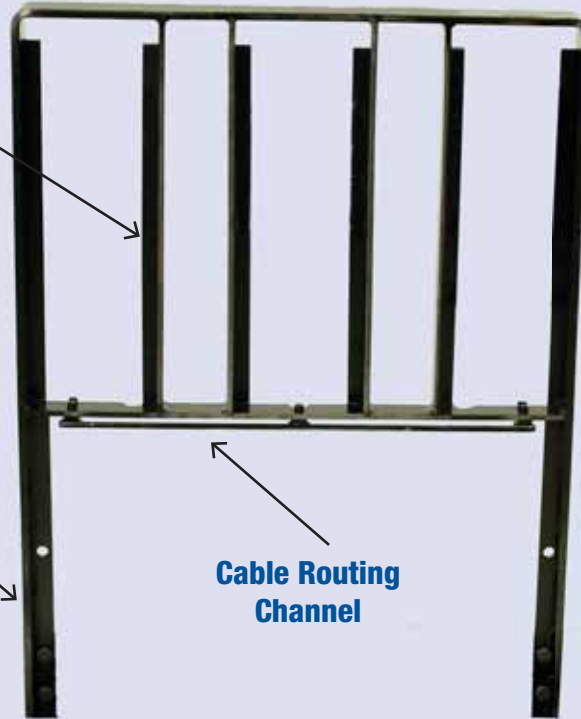




Guides
designed to
accept
Intermec Reader
or Antenna

Load Backrest
to fit Cascade
Sideshifter or
OEM Carriages

Cable Routing
Channel



For Quick Installation of Intermec Readers and Antennas

Cascades new ALBR (Adaptable Load Backrest), developed in partnership with Intermec, provides a 'ready to mount' load backrest with all the necessary mounting holes and brackets to attach Intermec RFID components. These ALBRs are made to fit most OEM carriages and all Cascade Sideshifters, and can be mounted in countless configurations to meet application needs.

APPLICATIONS

Provides a means to quickly and easily install Intermec RFID hardware without the typical grinding, cutting or drilling required with retrofitting a standard load backrest.

FEATURES

- Built to order for most major truck brands and models
- No-Weld Installation-Brackets with mounting holes
- RFID reader/antenna READY
- Protection for wiring: Channel structure provides extra protection to route the wiring
- Retrofittable

HOW TO ORDER

- Order from Cascade the custom made "RFID" ready Adaptable Load Backrest
- Order from Intermec Distribution Channels the "RFID" Readers, Antenna and Wiring
- Must include the pre-sale information from the back of this specification sheet

Quickly deploy
RFID Equipment
on your Lift Truck
Fleet.

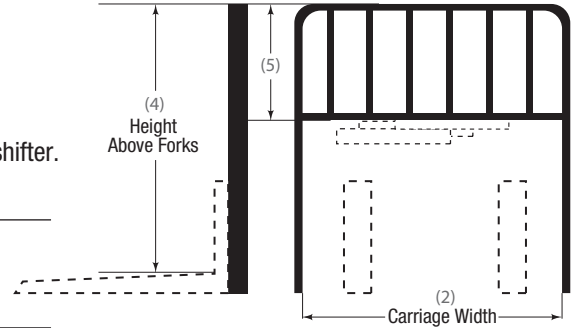


Cascade ALBR shown with
Intermec Components Attached

Provide the following information when placing an order for a custom built RFID Load Backrest for Intermec Hardware.

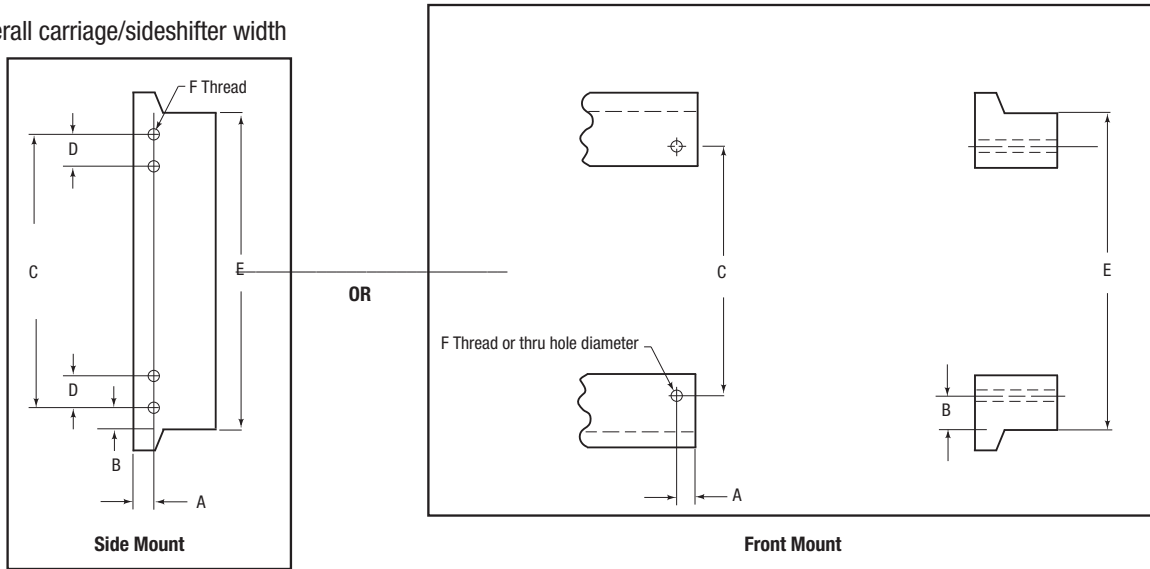
- 1) Truck make and model _____
- 2) Carriage Width _____
- 3) If attached to a Cascade sideshifter provide model number and part number of sideshifter.

- 4) Load backrest height above the top surface of the forks. Standard backrest heights are 36", 48" and 60". Custom heights are available upon request. _____
- 5) Top of LBR to horizontal bar _____



If you don't have the above information, please use the diagram below to provide these dimensions:

- measurement of the carriage (or sideshifter) load backrest pattern and required load backrest height above the top surface of the forks
- overall carriage/sideshifter width



Choose one:

Side Mount

Front Mount

A _____

B _____

C _____

D _____

E _____

F _____