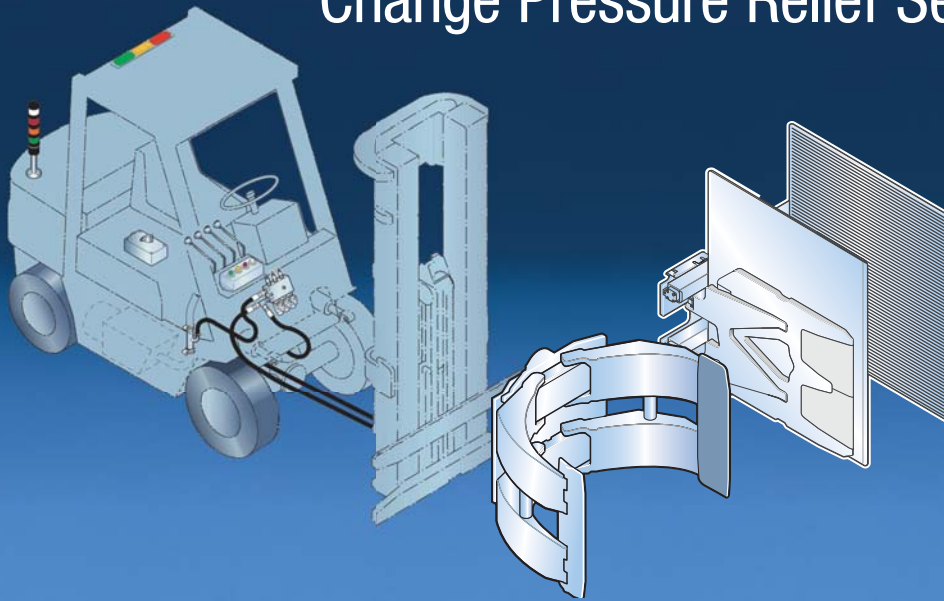


An Easy, Ergonomic Way to Change Pressure Relief Settings



Three independent, user defined pressure settings



Rotary switch to select pressure setting



Optional Light Tower or Light Bar



In-cab Light Bar shows active setting



Wiring and circuit protection fuse

APPLICATIONS

Multi-setting Relief Valves are popular options for controlling hydraulic clamping pressure in roll clamp and carton clamp applications. This three pressure setting system is used for controlling clamp force in roll clamp and carton clamp applications when multiple settings are required to prevent over clamping. The electronic pressure regulator system offers a solution to the ergonomics of switch location.

FEATURES

- Three adjustable relief settings plus truck relief. System can be configured during installation to exclude truck relief.
- Ergonomically located control switch allows driver to remain in driving position while changing between pressure settings.
- A small in-cab light box to show the driver which relief setting is active. Lights are bright and visible from 40 feet.
- Optional light tower or light bar that's visible from a long range showing which relief setting is active.
- Valve can be mounted in various locations allowing ease of installation.
- All necessary electrical wiring, including a circuit protection fuse, are included with the kit.

OPTIONS

- The Electronic Pressure Regulator System is available with the following packages in either 12 volt or 24-48 volt:
- Optional Light Tower or Light Bar can be mounted in best location for supervisor observation.
- With Rotary or Sequential Loop push button switching system
- Consult Cascade for customized solutions to fit your application.

INCLUDED WITH THE ELECTRONIC PRESSURE REGULATOR SYSTEM



Valve Assembly

Solenoid-operated valve assembly with three independent and user definable pressure settings.



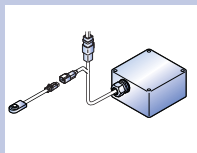
Wiring and Circuit Protection Fuse

All necessary electrical wiring and circuit protection fuse.



Control Switches/Options

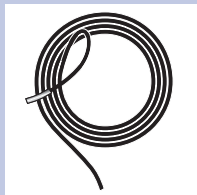
Rotary Control Switch to select pressure setting.
Sequential loop with push button switch allows the driver to push a button mounted on or near the auxiliary handle. Each time the button is pushed the next pressure setting is activated. Keep pressing the button and the system loops back to the original setting.



In-Cab Light Bar

Small in-cab light bar to show the driver which setting is active

RECOMMENDED ACCESSORIES AND OPTIONS



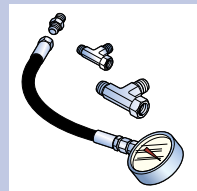
Optional Light Tower Cable

Extension for use where the light will be located in a position that will require more than 90" of cable. Extension adds 72" length.



Optional Light Tower or Bar

Pressure Indicator Lights, visible from a long range, correspond to the pressure setting that is active.



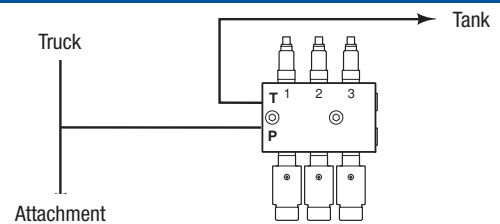
Pressure Gauge Kit

High quality, 0-5,000 psi, glycerin filled gauge plus adapter fittings. This kit is recommended for setting pressure of each relief cartridge.

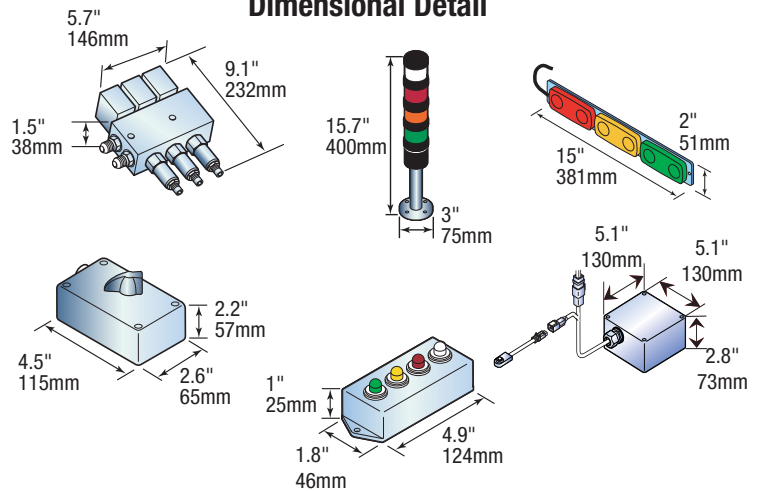


Low Pressure Tank Line Kit

Includes hose and hardware necessary to install a hydraulic line directly into an existing low pressure tank line hose.



Dimensional Detail



Universal Low Pressure Tank Line Kit

Includes 1/2" hoses, fittings and diffuser to install low pressure tank line kit directly to the top of the hydraulic tank cover. This does not require cutting into the hydraulic return line, and provides excellent efficiency.

The use of low pressure tank line kits is required for optimal performance and system accuracy.