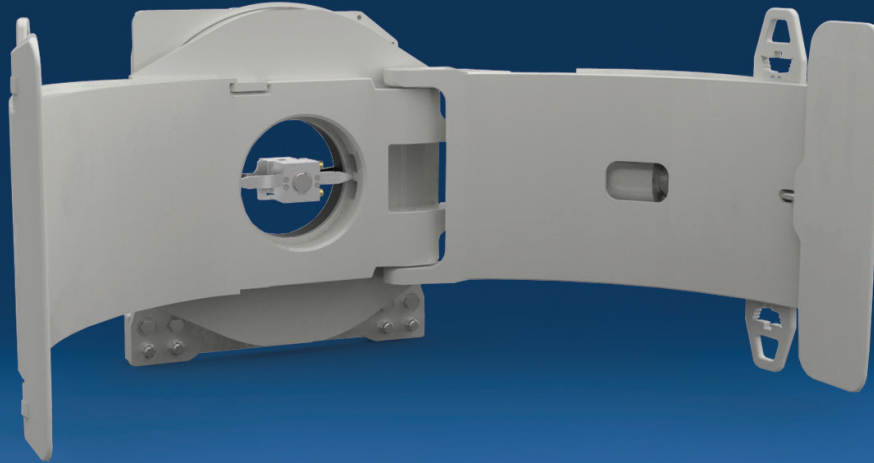
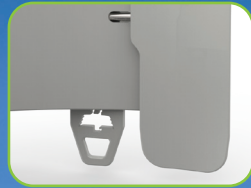


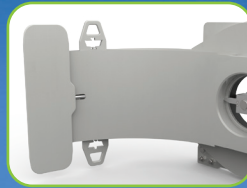
# Specifically Designed for Printers and Newspaper Publishers



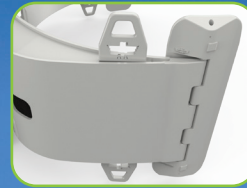
Sealed 40G Rotator gear and dual tooth engagement



Built-in pad protectors



Integral short arm for strength and durability



Thin arm profile with integral pad protectors



Lube free pivot bushings

## APPLICATIONS

The 13H Paper Roll Clamp is designed for newspaper publishers, printers and warehouses handling small to medium size rolls of newsprint, form and printing stock.

## OPTIONS

- Wide variety of rubber, urethane and other pads are available for improved handling of industry-specific papers.
- 180° Stop Group to ensure pad alignment with roll.
- HFC (Hydraulic Force Control) to eliminate damage caused by improper clamp force.
- Larger opening ranges available.

## FEATURES

### ***Reduced Roll Damage***

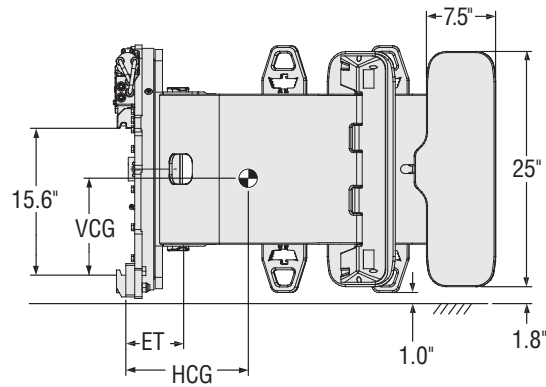
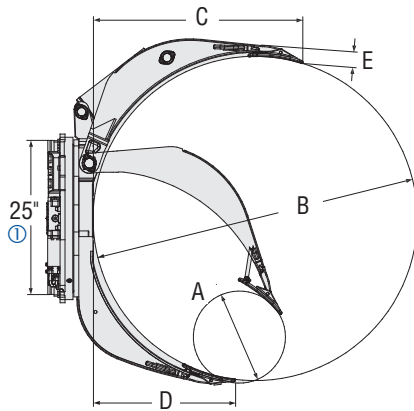
- H-Series pad alignment system, utilizing dual spring technology, holds the contact pads in proper alignment.
- Thin-arm profile with smooth-arm contour eases roll breakout and permits close stacking.

### ***Fast Roll Handling***

- Excellent arm speed boosts production.
- 360° rotation to quickly transition to and from bilge position.

### ***Excellent Durability***

- Highly durable rotator features a sealed ring gear design to eliminate contaminants and debris.
- Unitized construction provides structural integrity in arms and frame.
- Lube-free pivot bushings provide extended service life.
- Integral pad protector to guard against pad wear.



Catalog Order No. USA \$	Capacity@ Load Center		Roll Range A-B	Mtg. Class	Mtg. Angle	Weight		Effective Thickness ET	Horizontal Ctr. of Gravity HCG	Vertical Ctr. of Gravity VCG	Long Arm Length C	Short Arm Length D	Long Arm Thickness E
	lbs@in	kg@mm				lbs	kg						
<b>Fixed Short Arm/Fixed Frame</b>													
<b>13H-RCF-A90</b>	3,500@21.0"	1,580@535	10"-42"	II	0°	796	362	6.2"	8.1"	11.2"	26.8"	18.8"	2.9"
<b>13H-RCF-A00</b>	3,300@22.5"	1,470@575	13"-45"	II	0°	828	376	6.2"	8.8"	11.2"	28.5"	20.4"	2.8"
<b>13H-RCF-A10</b>	2,900@25.5"	1,300@650	15"-51"	II	0°	861	391	6.2"	9.4"	11.2"	32.0"	22.5"	2.4"
<b>13H-RCF-A00</b>	2,700@27.5"	1,200@700	15"-55"	II	0°	889	404	6.2"	10.0"	11.2"	33.1"	24.5"	2.8"
<b>13H-RCF-A00</b>	2,500@30.0"	1,100@762	17"-60"	II	0°	933	424	6.2"	10.7"	11.2"	36.0"	26.5"	2.9"
<b>13H-RCF-A10</b>	2,400@31.5"	1,050@800	18"-63"	II	0°	942	428	6.2"	11.2"	11.2"	37.2"	28.3"	2.8"
<b>13H-RCF-E90</b>	3,500@21.0"	1,580@535	10"-42"	II	2°	792	360	5.7"	7.7"	11.2"	26.8"	18.8"	2.9"
<b>13H-RCF-E00</b>	3,300@22.5"	1,470@575	13"-45"	II	2°	824	374	5.7"	8.4"	11.2"	28.5"	20.4"	2.8"
<b>13H-RCF-E10</b>	2,900@25.5"	1,300@650	15"-51"	II	2°	857	390	5.7"	9.0"	11.2"	32.0"	22.5"	2.4"
<b>13H-RCF-E00</b>	2,700@27.5"	1,200@700	15"-55"	II	2°	885	402	5.7"	9.6"	11.3"	33.1"	24.5"	2.8"
<b>13H-RCF-E00</b>	2,500@30.0"	1,100@762	17"-60"	II	2°	929	422	5.7"	10.2"	11.2"	36.0"	26.5"	2.9"
<b>13H-RCF-E10</b>	2,400@31.5"	1,050@800	18"-63"	II	2°	937	426	5.7"	10.8"	11.3"	37.2"	28.3"	2.8"

① Dimension is the widest spread of either upper or lower hook.

- ▶ Herringbone is standard, other pad types available.
- ▶ All models come standard with 360° rotation. A 180° Stop Group is also available. Consult Cascade for stop groups on non standard roll ranges.
- ▶ 0° mounting provides the driver with a vertical reference to aid in aligning pads to roll; i.e. the pads are at the same angle as the mast. 0° mounting must be used when stacking above 220".
- ▶ 2° mounting provides ease in handling rolls in the horizontal (bilge) position.

### HYDRAULIC FUNCTIONS

Model	Hydraulic Functions	Truck Auxiliary Valves Required
Fixed Short Arm	2	2

### HYDRAULIC FLOW & PRESSURE

Minimum Pressure psi	Maximum Pressure psi/bar	Rotate		Clamp	
		Min-Rec-Max Function 1 gpm	Min-Rec-Max Function 2 gpm	Min-Rec-Max Function 1 gpm	Min-Rec-Max Function 2 gpm
500	2,300/160	5	7 - 10	5	7 - 10

### ROTATOR SPECIFICATIONS

RPM ①	Flow gpm	Torque in-lbs.@2,300 psi
7.5	10	40,000