



*Move and dump
drums up to
four times faster.*



DRUM CLAMPS

Efficient and safe multiple drum handling.

APPLICATIONS

Drum clamps are used wherever product is stored in drums, including the petroleum, chemical and food processing industries. Drum clamps improve productivity by allowing a forklift driver to handle up to four drums per load. In addition, the use of a drum clamp allows the driver to securely grip the drums for transporting. This eliminates instability during braking and cornering, which is a common problem when attempting to handle drums with conventional forks.

FEATURES

- Proven, durable arm and aluminum frame construction ensuring long, useful life of the clamp
- Superior arm-slide material and design for extended bearing life
- Arm design for handling standard 55-gallon drums—standard
- Replaceable rubber faced arm pads
- Regenerative hydraulic valving for optional arm speed

OPTIONS

- Custom arm radiuses for special drum sizes
- Custom arms for fiber and for plastic drums
- Custom arm lengths
- Class III mounting
- Quick Disconnect mounting
- Custom opening ranges



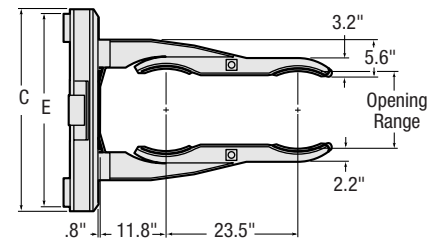
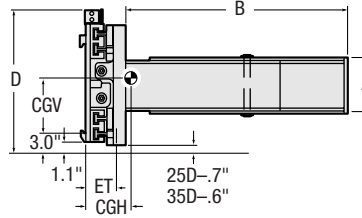
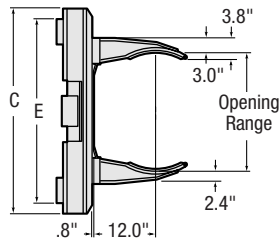
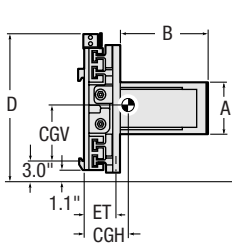
Revolving model shown

cascade
corporation

DRUM CLAMPS

2 Drum Clamp (handles 1 or 2 drums)

4 Drum Clamp (handles 1, 2 or 4 drums)



Capacity Lbs. @ 24" Load Center	Opening Range ①	Catalog Order No.	Mounting Class	Mounting Angle ②	Usable Arm Height A	Usable Arm Length B	Weight		Effective Thickness ET	Horizontal Center of Gravity HCG	Vertical Center of Gravity VCG	Overall Width C	Overall Height D	Hook Spread E	Rotator Speed	Rotator Torque @ 2,000 PSI	
							lbs	kg									
2-Drum Non-Sideshifting																	
2,500	1,135	19.0"-63.0"	25D-DTB-01A	II	N/A	9.2"	17.1"	595	270	5.5"	4.2"	8.3"	34"	24.5"	30"	N/A	N/A
3,500	1,590	20.5"-69.0"	35D-DTB-01A	II	N/A	9.2"	17.1"	650	295	5.7"	4.1"	8.7"	37"	25.3"	35"	N/A	N/A
2-Drum Sideshifting																	
2,500	1,135	19.0"-63.0"	25D-DTS-11A	II	N/A	9.2"	17.1"	595	270	5.5"	4.2"	8.3"	34"	24.5"	30"	N/A	N/A
3,500	1,590	20.5"-69.0"	35D-DTS-11A	II	N/A	9.2"	17.1"	650	295	5.7"	4.1"	8.7"	34"	24.5"	30"	N/A	N/A
2-Drum Revolving																	
3,500	1,590	20.5"-69.0"	35D-DTR-21A	II	0°	9.2"	17.1"	1,150	522	9.5"	5.5"	16.2"	37"	30.5"	32"	5.7 RPM	55,000
3,500	1,590	20.5"-69.0"	35D-DTR-21F	II	4°	9.2"	17.1"	1,150	522	8.5"	4.5"	16.2"	37"	30.5"	32"	@10GPM	-Lbs
4-Drum Non-Sideshifting																	
2,500	1,135	16.5"-61.0"	25D-DFB-02A	II	N/A	10.0"	41.8"	815	370	5.6"	12.3"	8.3"	34"	24.5"	30"	N/A	N/A
3,500	1,590	18.0"-66.5"	35D-DFB-02A	II	N/A	10.0"	41.8"	870	395	5.8"	11.6"	8.7"	37"	25.3"	35"	N/A	N/A
4-Drum Sideshifting																	
2,500	1,135	16.5"-61.0"	25D-DFS-12A	II	N/A	10.0"	41.8"	815	370	5.6"	12.3"	8.3"	34"	24.5"	30"	N/A	N/A
3,500	1,590	18.0"-66.5"	35D-DFS-12A	II	N/A	10.0"	41.8"	870	395	5.8"	11.6"	8.7"	37"	25.3"	35"	N/A	N/A
4-Drum Revolving																	
3,500	1,590	18.0"-66.5"	35D-DFR-22A	II	0°	10.0"	41.8"	1,350	613	9.4"	10.9"	13.2"	37"	30.5"	32"	5.7 RPM	55,000
3,500	1,590	18.0"-66.5"	35D-DFR-22F	II	4°	10.0"	41.8"	1,350	613	8.4"	9.9"	13.2"	37"	30.5"	32"	@10GPM	-Lbs

- ① Opening range is to inside of curvature of drum pad.
- ② Vertical mount (0° mounting angle) is recommended for lift heights exceeding 180".

▶ Clamps above are designed for standard 55 gallon steel drums with two rolling rings. Smooth steel, plastic or fiber drums require special pads. Please consult Cascade.

INSTALLATION KITS

Model	Catalog Order No.
Non-Sideshifting	659245
Sideshifting	659249
Revolving	672442

HYDRAULIC FLOW AND PRESSURE

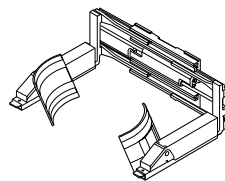
Model	Minimum	Recommended	Maximum	Max. Pressure
25D	4 GPM	5.5 GPM	5.5 GPM	2,300 PSI
SS & Non-SS 35D	4 GPM	7 GPM	7 GPM	2,300 PSI
Revolving 35D	5 GPM	10 GPM	12 GPM	2,300 PSI

HYDRAULIC FUNCTIONS

Model	Hydraulic Functions	Truck Auxiliary Valves Required
Non-Sideshifting	1	1
Sideshifting, Revolving	2	2

MOUNTING CLASS INFORMATION

Mounting Class	Truck Capacity
II	2,000-5,500 lbs.



Forward Drum Dumper

Slip-on dual powered 180° forward drum dumper arms. Handles steel drums. Replaceable rubber-faced pads for minimum drum damage. Forks 48" long. Optional combination pads for plastic or steel drums. **Consult Cascade.**

Model	Weight (Lbs.)
25D-FDD-03A	1,240
35D-FDD-03A	1,350
50D-FDD-03A	1,610