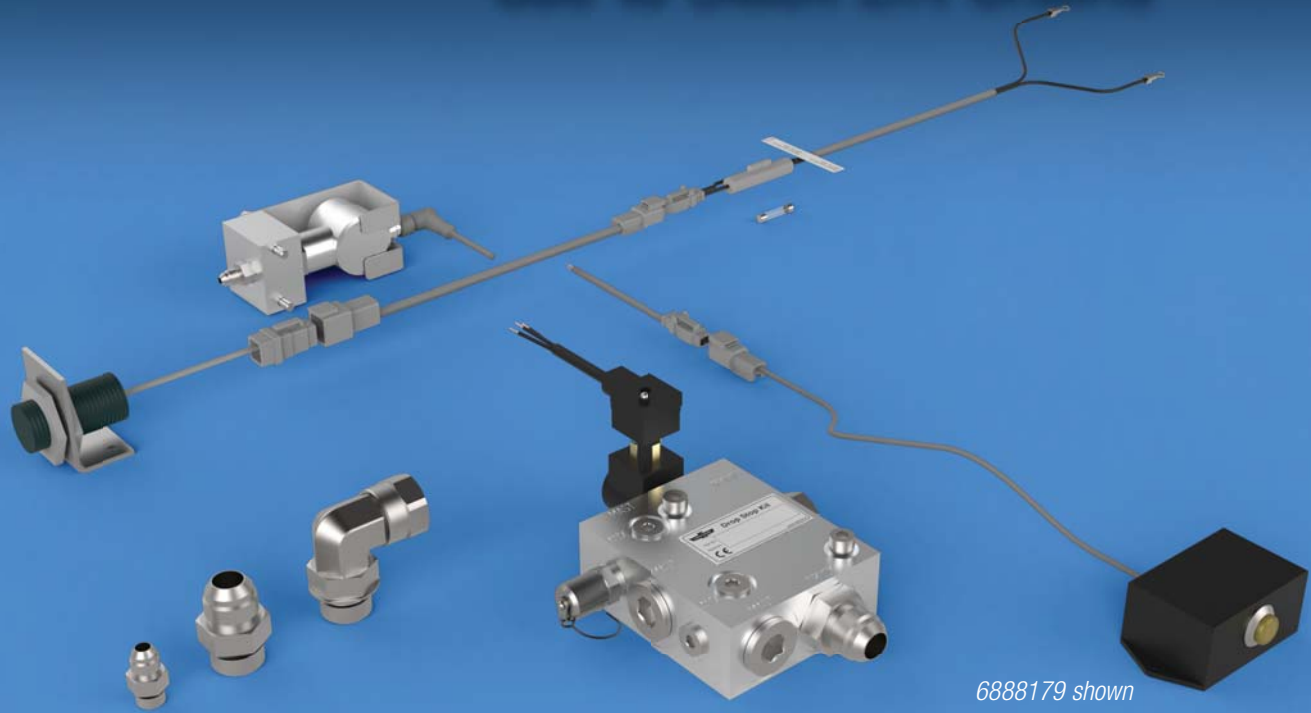


Protection from Paper Roll Damage due to Slack Lift Chains



6888179 shown

Choose the best option for your needs:

OPTION 1: STAND-ALONE DROP STOP KIT

A common source of damage to paper rolls can be caused by holding the lowering control valve open after the load has been safely deposited. This over-riding causes slack in the lift chain and subsequent dropping of the carriage, which could result in clamp pads sliding down the roll.

Cascade's Drop Stop system prevents slack lift chains and provides protection from damage. The system prevents clamp pads from sliding down the roll and tearing paper after un-clamping the roll in the slack chain condition. It incorporates an indicator light to notify the operator that the load is supported by structure other than the truck/attachment (such as the floor, rack, other rolls, etc.).

OPTION 2: HFC™ WITH DROP STOP

Combining two great damage reduction options for even better damage prevention

HFC™ with Drop Stop combines automatic adjustment of the clamp force with protection from damage due to slack lift chains. The HFC™ with Drop Stop kit includes the Drop Stop system and all of the HFC™ related components to provide an unsurpassed level of damage reduction.

Excessive clamp force caused by too much hydraulic pressure is another very common cause of damage to paper rolls. HFC™ (Hydraulic Force Control) solves this problem by automatically adjusting the clamp force proportional to the weight of the load, without any driver input. HFC™ works by continually sensing the hydraulic pressure necessary to lift the load and adjusts the clamping pressure as the weight of the load increases or decreases.

BENEFITS

- Prevents torn layers and scuffing on paper rolls.
- Minimizes paper roll damage due to incorrect clamp force.
- No need to change driver habits.
- Removes the guesswork from roll handling.
- Driver can use normal operating procedures: close clamp arms on the load and then hoist the load off the ground.

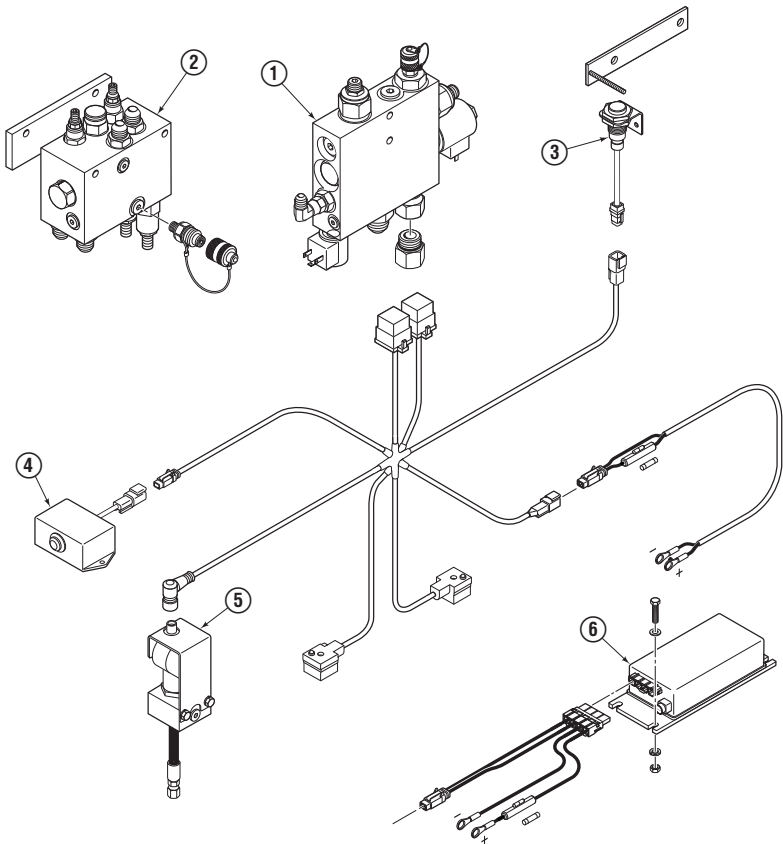
FEATURES

- The stand-alone Drop Stop Kit allows tuning for both free-lift and main-lift masts.
- With HFC™, the clamp force is automatically adjusted without any special actions by the driver.
- Quick installation only requires tapping into hoist, clamp and open lines.
- Low maintenance systems.

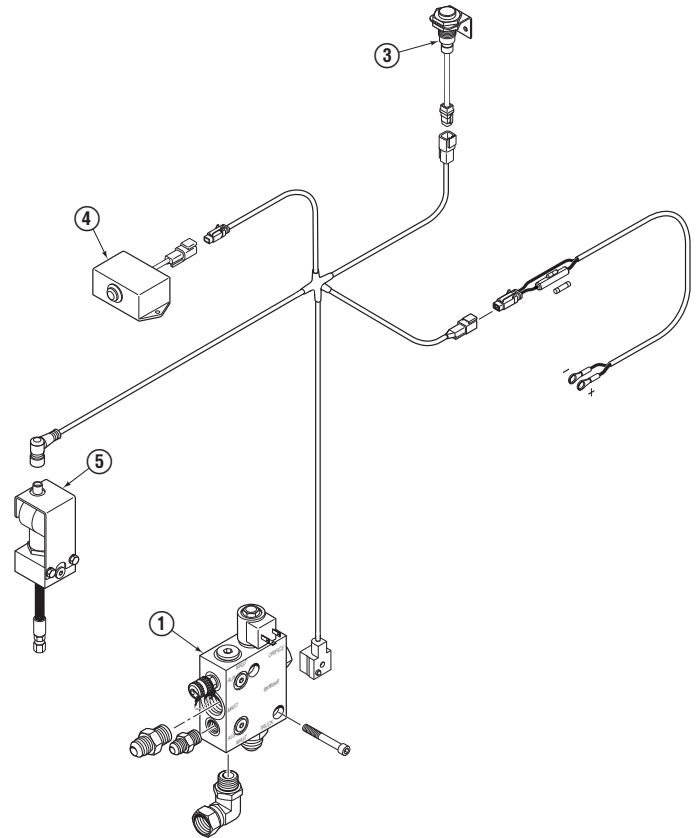
Prevents chain slack and subsequent dropping of the carriage which causes damage to the load.



HFC™ WITH DROP STOP KIT



DROP STOP KIT, STAND-ALONE FREE-LIFT



REF	DESCRIPTION
1	Equalizer Valve
2	HFC Valve
3	Sensor Switch
4	Cab Light
5	Pressure Switch
6	Voltage Converter

CATALOG NO.

DESCRIPTION

6888179	Stand-alone Drop Stop Kit, Free-lift Mast
6898891	HFC w/Drop Stop, Free Lift & Main Lift Mast, 12V, Indicator light
6898892	HFC w/Drop Stop, Free Lift & Main Lift Mast, 24-48V, Indicator light
6890313	Stand-alone Drop Stop Kit, Simplex Mast
6898893	HFC w/Drop Stop, Simplex Mast, 12V, Indicator light
6898894	HFC w/Drop Stop, Simplex Mast, 24-48V, Indicator light

See User Manual #6888167 for specific details on the Stand-alone kits & User Manual #689884 for the HFC specifics.