



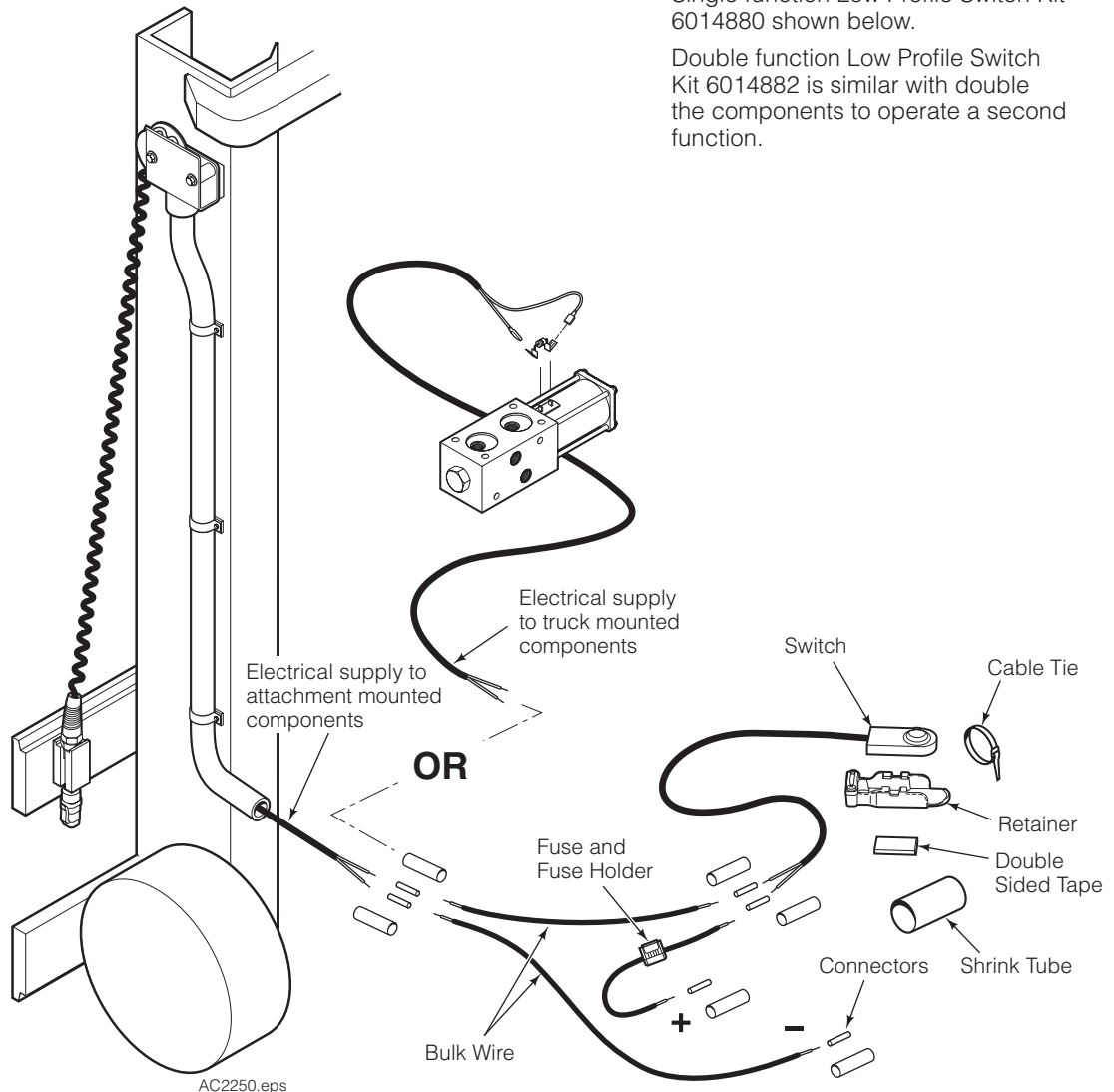
Installation Instructions

Low Profile Switch Kits 6014880 – Single Function 6014882 – Double Function

This manual provides installation instructions for Cascade Low Profile Switch Kits. The kits allow operator control of an attachment electrical function with an easy to install switch for the truck control handle and a fuse. The kit integrates easily with truck component or a Cascade Power Supply Kit to route electricity over the mast to an attachment.

Single function Low Profile Switch Kit 6014880 shown below.

Double function Low Profile Switch Kit 6014882 is similar with double the components to operate a second function.



cascade[®]
corporation

For Technical Support . . .

Call: 1-800-227-2233 Fax: 1-888-329-8207

Internet: www.cascorp.com

Write: Cascade Corporation, PO Box 20187, Portland, OR 97294

To Order Parts . . .

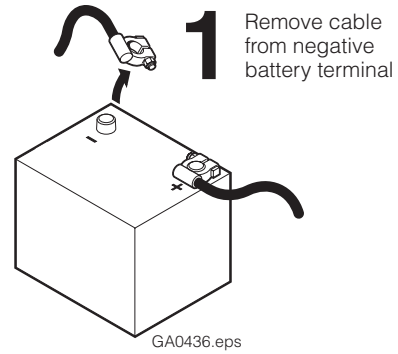
Call: 1-888-227-2233 Fax: 1-888-329-0234

Internet: www.cascorp.com

Write: Cascade Corporation, 2501 Sheridan Ave., Springfield, OH 45505

Kit Installation

1 Disconnect the cable from the negative battery terminal or as directed by OEM truck manual.



2 Install the switch assembly to the control knob. Position the switch on the handle in a location for comfortable thumb or index finger operation. To secure the switch assembly, do one of the following:

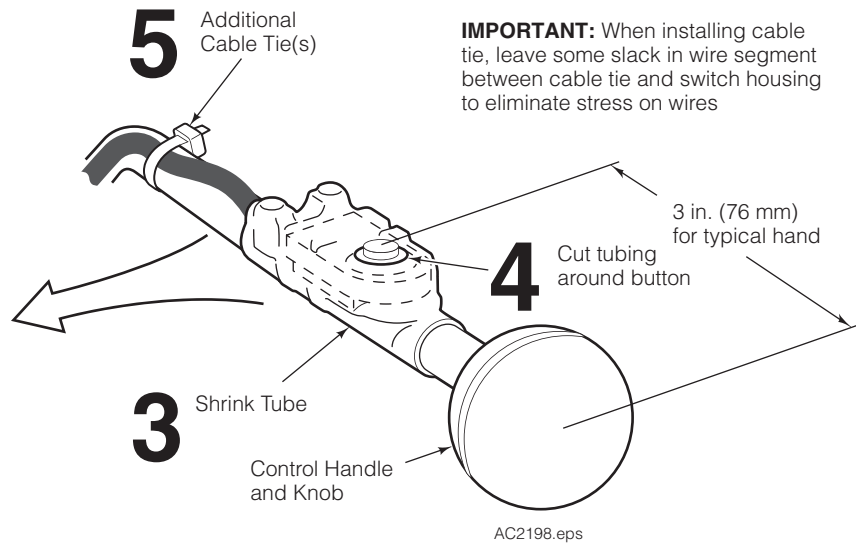
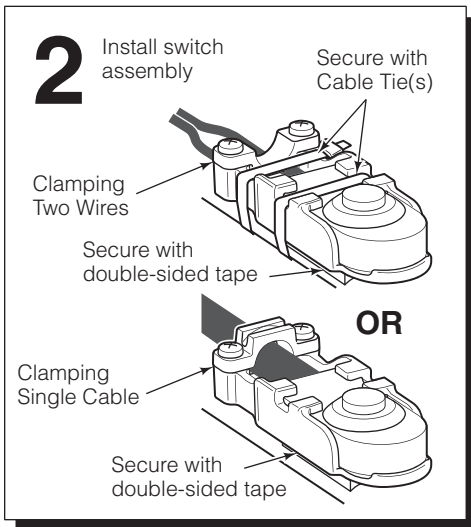
- Place double-sided tape under the switch assembly and attach to truck handle.

OR

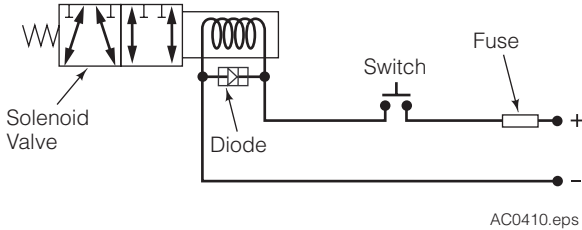
- Place double-sided tape under the switch assembly and attach to truck handle. Loop and tighten cable ties around the switch assembly and truck handle.

3 Install heat shrink tubing (optional if cable ties are installed) over the handle and switch assembly. Use a heat gun, heat the tubing to secure the switch to the handle. Reinstall the knob, if required.

4 Carefully cut a circle out of the tubing round the button.

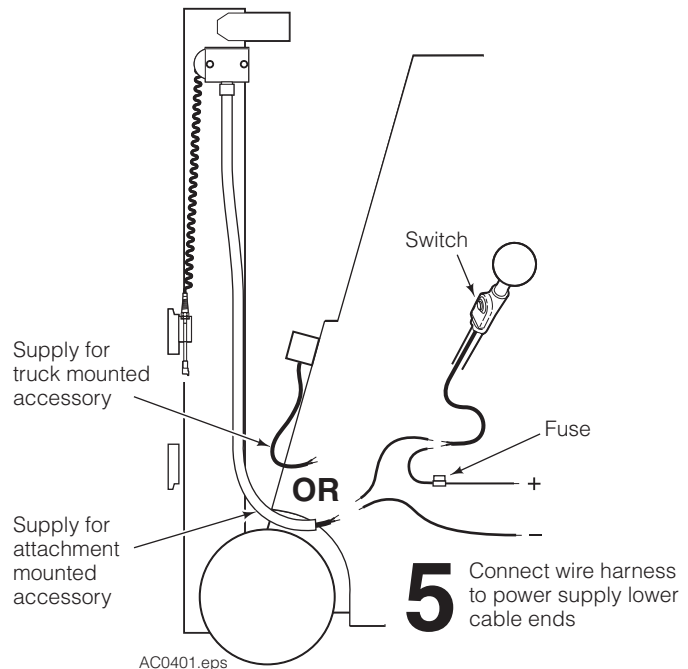


5 Connect the switch wires to the power supply or truck mounted accessory wires and truck power as marked. Crimp the connectors and cover with the heat shrink tube. Watch for pinch and wear points. Install cable ties as needed.

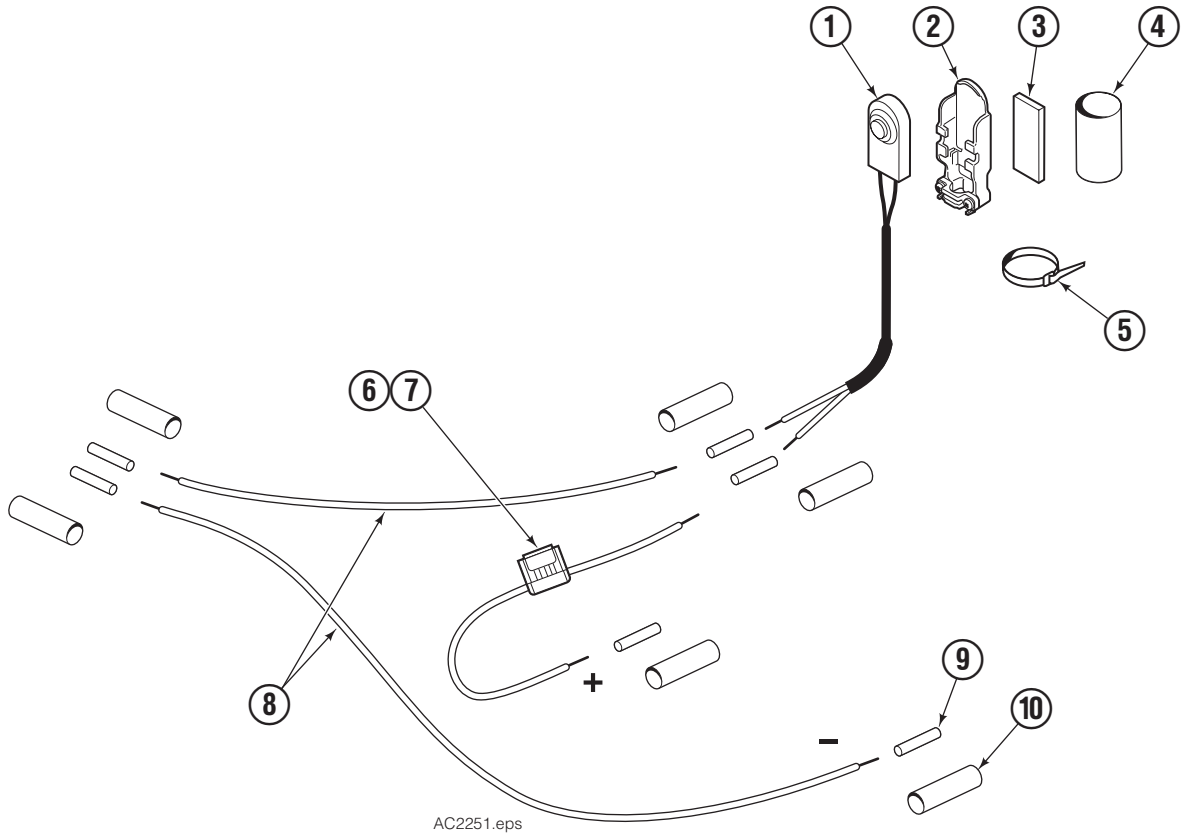


6 Connect the battery cable(s) to their proper terminals.

7 Test the electrical functions for proper operation. Raise and lower the mast to check the power supply coil cable for proper alignment, extension and retraction.



Low Profile Switch Kits



Single Function			
REF	QTY	PART NO.	DESCRIPTION
		6014880	Operator Control Switch Kit
1	1	6009928	Switch ■
2	1	6821504	Switch Retainer ■
3	1	6014987	Double Sided Tape
4	1	6822532	Shrink Tube
5	3	6822796	Cable Tie
6	1	228154	Fuse – 7.5 Amp
7	1	219402	Fuse Holder
8	1	6014990	Wire –18 AWG
9	6	6014986	Connector
10	6	6016648	Shrink Tube

■ Included in Switch Assembly 6824997

Double Function			
REF	QTY	PART NO.	DESCRIPTION
		6014882	Operator Control Switch Kit
1	2	6009928	Switch ■
2	2	6821504	Switch Retainer ■
3	2	6014987	Double Sided Tape
4	2	6822532	Shrink Tube
5	6	6822796	Cable Tie
6	2	228154	Fuse – 7.5 Amp
7	2	219402	Fuse Holder
8	2	6014990	Wire –18 AWG
9	12	6014986	Connector
10	12	6016648	Shrink Tube

■ Included in Switch Assembly 6824997

Do you have questions you need answered right now?

Call your nearest Cascade Service Department.

Visit us online at www.cascorp.com

AMERICAS

**Cascade Corporation
U.S. Headquarters**
2201 NE 201st
Fairview, OR 97024-9718
Tel: 800-CASCADE (227-2233)
Fax: 888-329-8207

Cascade Canada Inc.
5570 Timberlea Blvd.
Mississauga, Ontario
Canada L4W-4M6
Tel: 905-629-7777
Fax: 905-629-7785

Cascade do Brasil
Rua João Guerra, 134
Macuco, Santos - SP
Brasil 11015-130
Tel: 55-13-2105-8800
Fax: 55-13-2105-8899

EUROPE-AFRICA

**Cascade Italia S.R.L.
European Headquarters**
Via Dell'Artigianato 1
37030 Vago di Lavagno (VR)
Italy
Tel: 39-045-8989111
Fax: 39-045-8989160

Cascade (Africa) Pty. Ltd.
PO Box 625, Isando 1600
60A Steel Road
Sparton, Kempton Park
South Africa
Tel: 27-11-975-9240
Fax: 27-11-394-1147

ASIA-PACIFIC

Cascade Japan Ltd.
2-23, 2-Chome,
Kukuchi Nishimachi
Amagasaki, Hyogo
Japan, 661-0978
Tel: 81-6-6420-9771
Fax: 81-6-6420-9777

Cascade Korea
121B 9L Namdong Ind.
Complex, 691-8 Gojan-Dong
Namdong-Ku
Inchon, Korea
Tel: +82-32-821-2051
Fax: +82-32-821-2055

Cascade-Xiamen
No. 668 Yangguang Rd.
Xinyang Industrial Zone
Haicang, Xiamen City
Fujian Province
P.R. China 361026
Tel: 86-592-651-2500
Fax: 86-592-651-2571

**Cascade India Material
Handling Private Limited**
No 34, Global Trade Centre
1/1 Rambaugh Colony
Lal Bahadur Shastri Road,
Navi Peth, Pune 411 030
(Maharashtra) India
Phone: +91 020 2432 5490
Fax: +91 020 2433 0881

Cascade Australia Pty. Ltd.
1445 Ipswich Road
Rocklea, QLD 4107
Australia
Tel: 1-800-227-223
Fax: +61 7 3373-7333

Cascade New Zealand
15 Ra Ora Drive
East Tamaki, Auckland
New Zealand
Tel: +64-9-273-9136
Fax: +64-9-273-9137

**Sunstream Industries
Pte. Ltd.**
18 Tuas South Street 5
Singapore 637796
Tel: +65-6795-7555
Fax: +65-6863-1368

