

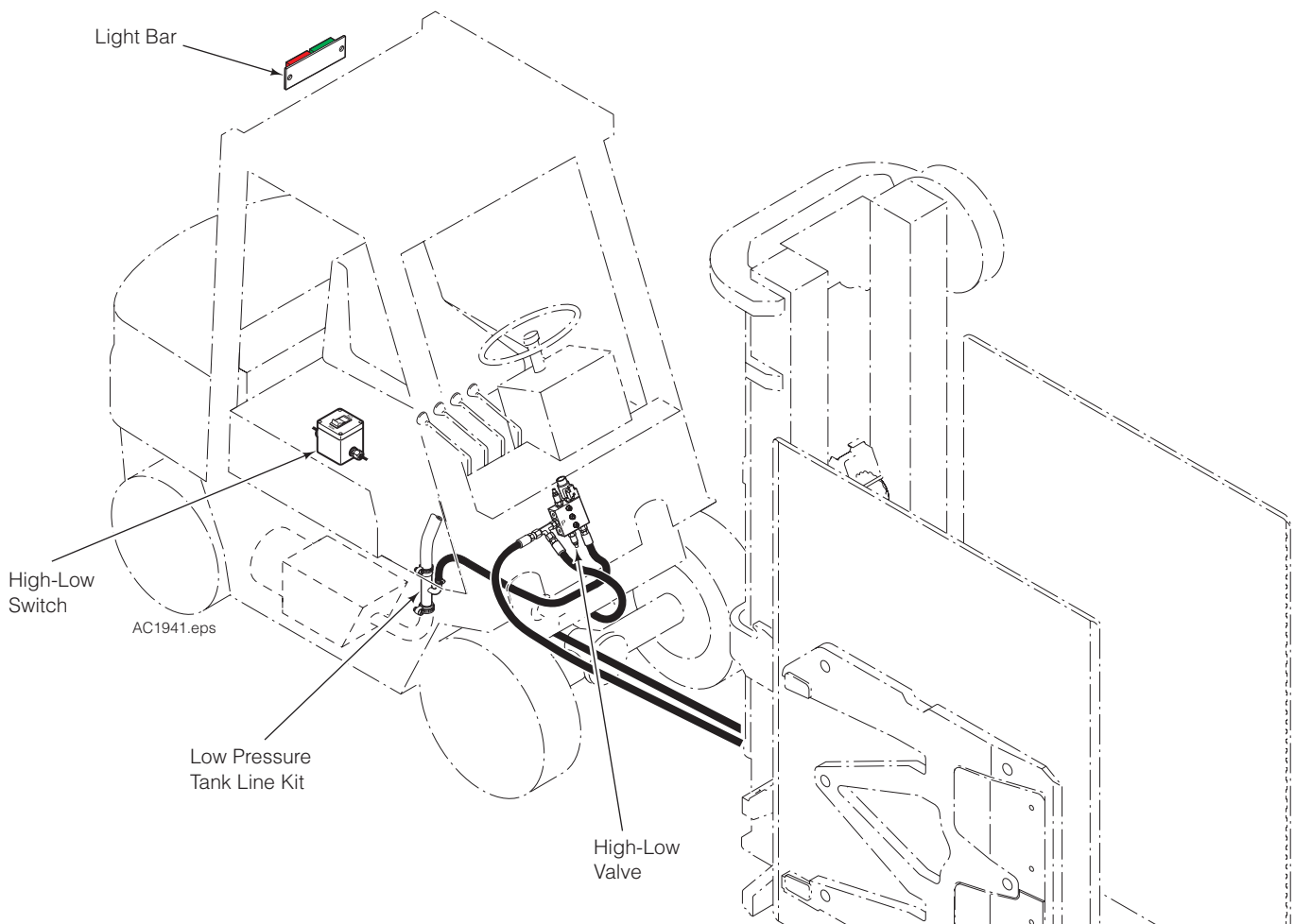


Installation Instructions

High-Low Pressure Regulator Kit 6804769

This manual provides instructions for Cascade High-Low Pressure Regulator Kit 68047669 for carton clamps. The kit includes a valve, a driver operated high-low switch and an indication light bar.

Cascade recommends using a low pressure tank line kit for a dedicated return connection to the truck tank.



cascade[®]
corporation

For Technical Support . . .

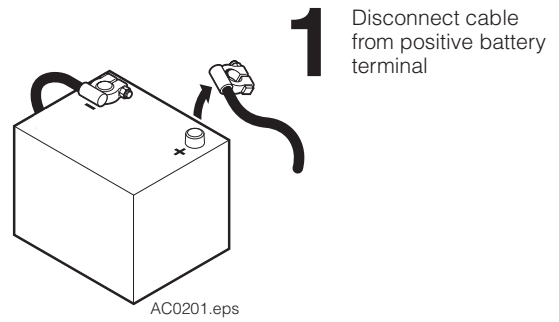
Call: 1-800-227-2233 Fax: 1-888-329-8207
Internet: www.cascorp.com
Write: Cascade Corporation, PO Box 20187, Portland, OR 97294

To Order Parts . . .

Call: 1-888-227-2233 Fax: 1-888-329-0234
Internet: www.cascorp.com
Write: Cascade Corporation, 2501 Sheridan Ave., Springfield, OH 45505

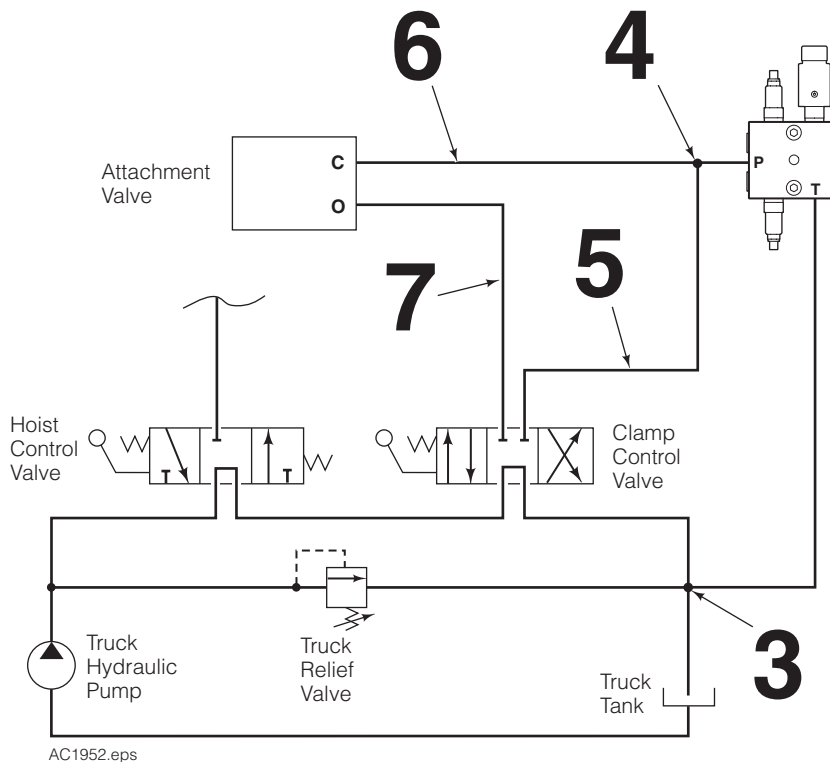
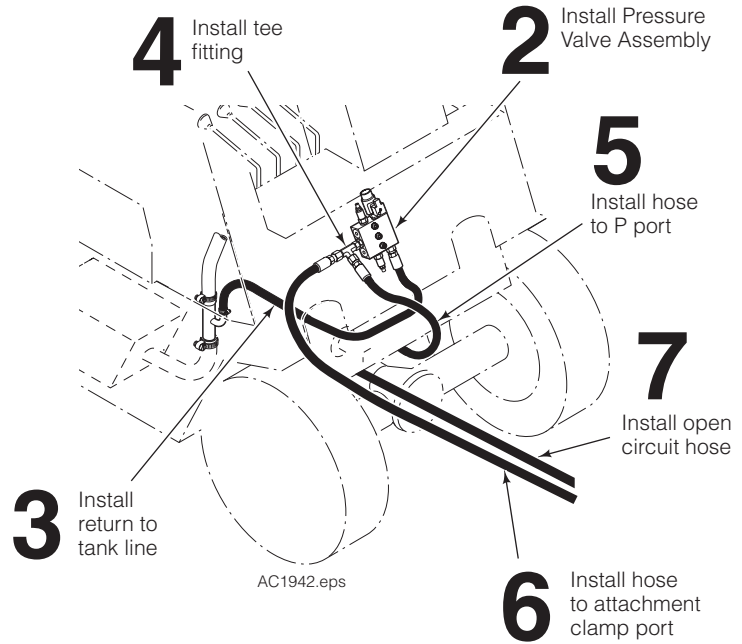
Installation

- 1 Disconnect the cable from the positive battery terminal.
- 2 Locate and install the pressure valve on the truck cowl or under the floorboard using 5/16 in. (8 mm) capscrews. If mounting on the cowl, watch for clearance when the mast is tilted back. The pressure valve has adjustment screws that need easy access for final adjustment.
- 3 Install a return to tank line to the T port on the bottom of the valve to connect with the truck tank line. Cascade Low Pressure Return Line Adapter Kits are listed below.

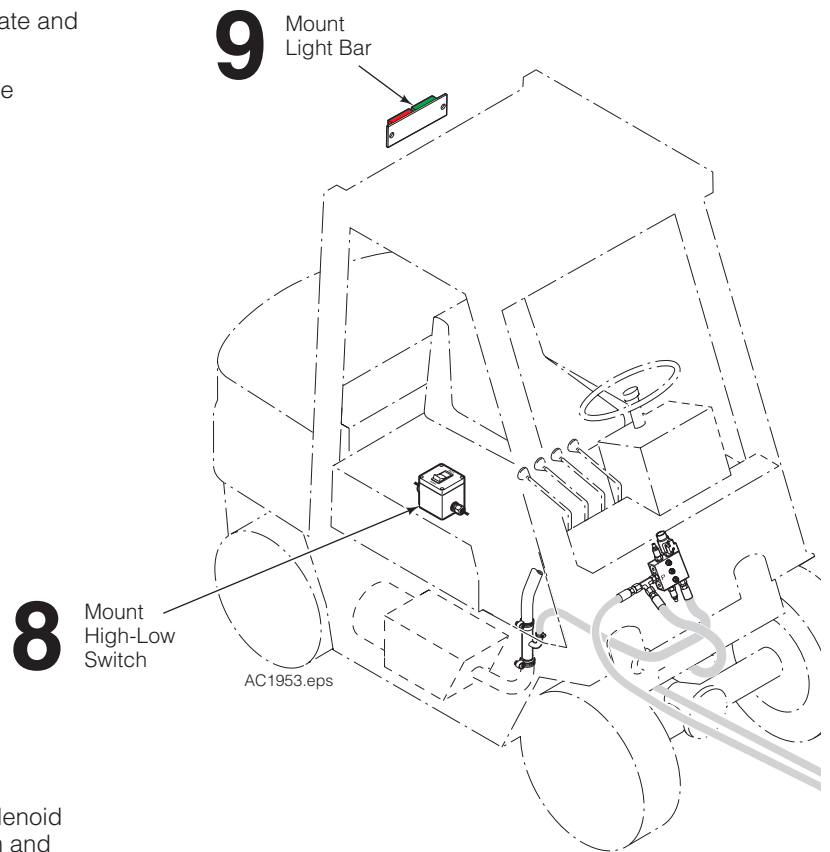


Tank Hose ID	Adapter Kit Part No.
.75 in. (19 mm)	214062
1.00 in. (25 mm)	211745
1.25 in. (31 mm)	214066
1.50 in. (38 mm)	6037507

- 4 Install a No. 8 tee fitting to the P Port on the side of the High-Low Valve.
- 5 Install a No. 8 hose from the truck clamp auxiliary valve CLAMP port to the P port tee fitting on the side of the High-Low Valve.
- 6 Install a No. 8 hose from the High-Low Valve P Port tee fitting to the supply circuit for the attachment CLAMP port.
- 7 Install a No. 8 hose from the truck clamp auxiliary valve OPEN port to the supply circuit for the attachment OPEN port.



- 8 In a location convenient to the truck operator, locate and mount the High-Low Switch.
- 9 Locate and mount the Light Bar on the back of the overhead guard.



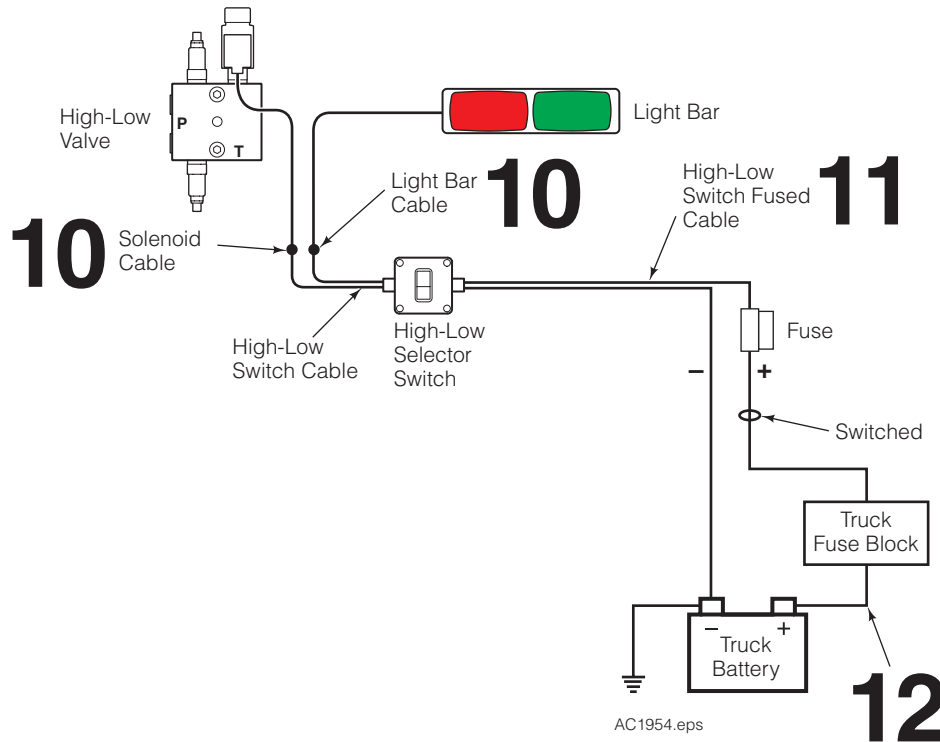
- 10 As required, connect the light bar cable and solenoid cable to the High-Low Switch. Use the diagram and table, shown. Check the cable routing for pinch points and clearance. Use wire ties as needed.

CAUTION: Consult the Lift Truck OEM for proper + power source connection.

- 11 Connect the fused positive wire to a 12V switched power source. Check the cable routing for pinch points and clearance. Use wire ties as needed.

- 12 Reconnect the positive battery cable to the battery.

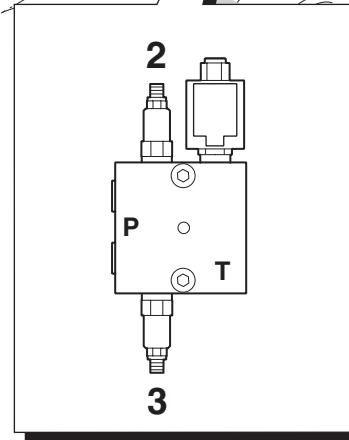
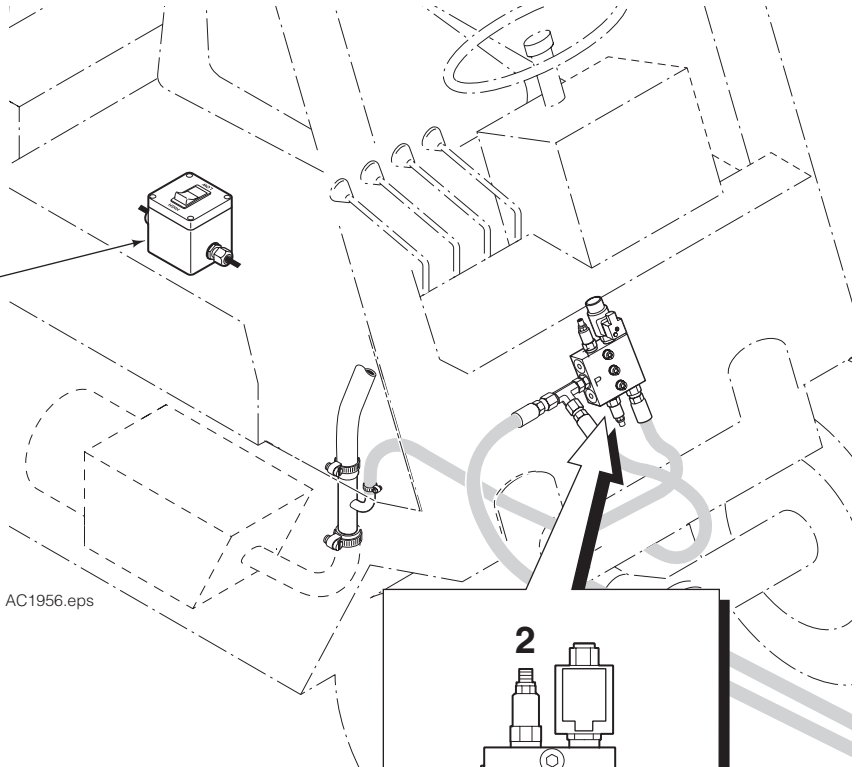
High-Low Switch Cable	Solenoid Cable	Light Bar Cable
#1 (+)	Brown (+)	-
#2 (-)	Blue (-)	-
Green/Yellow	-	Green/Yellow
#3 (Red)	-	#1
#4 (Green)	-	#2



1,4

High-Low
Rocker
Switch

AC1956.eps



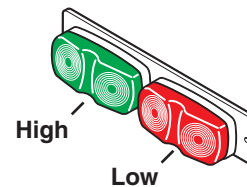
Relief Adjustment

To set the relief cartridges, use a pressure gauge or clamp force indicator. Refer to your clamp force indicator guide.

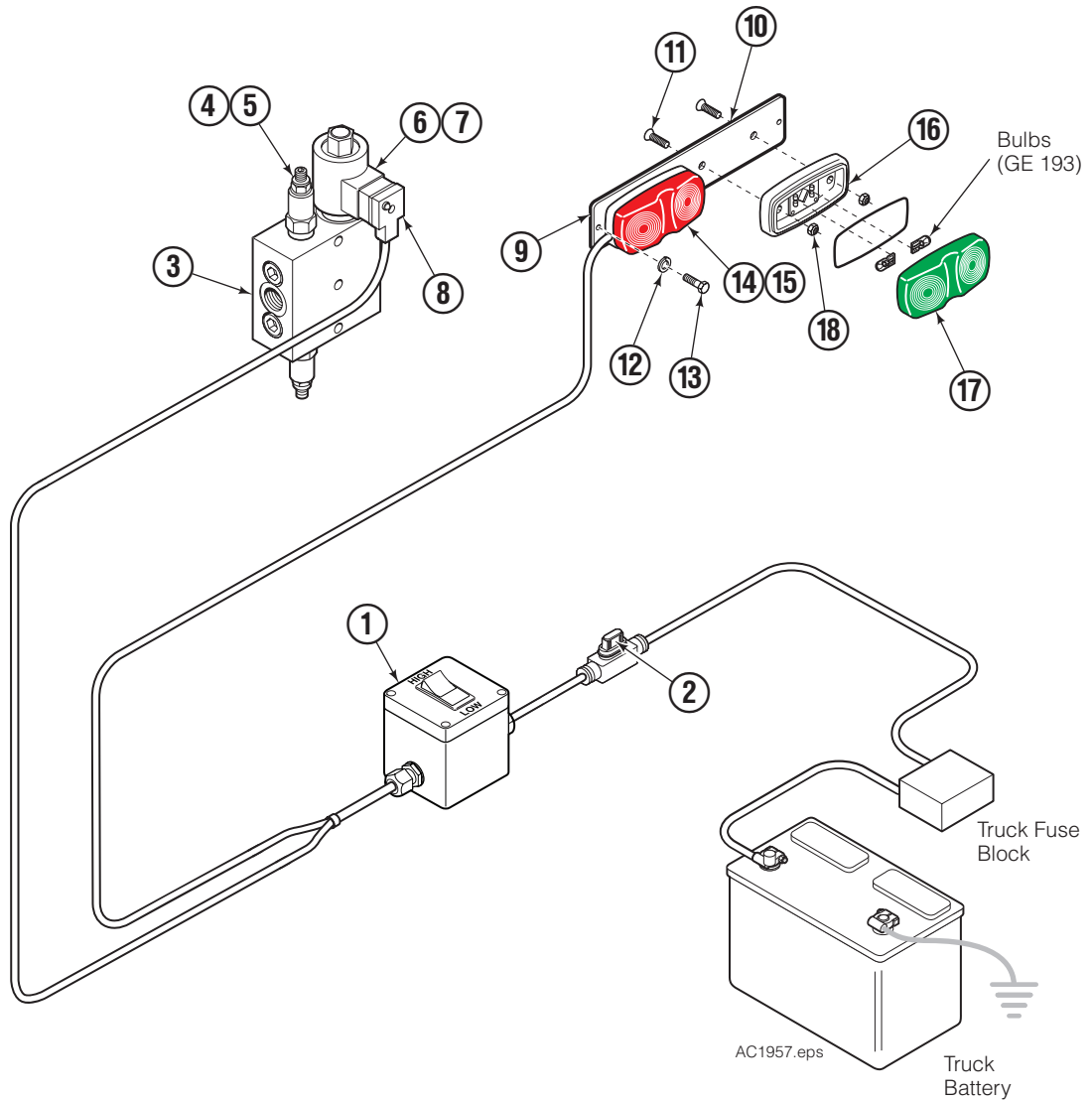
NOTE: If using a pressure gauge for cartridge adjusting, install a pressure gauge in the attachment valve test port.

IMPORTANT: Relief cartridges are preset to 1000 psi. Relief pressure for each cartridges must be adjusted for your application.

- 1 Set rocker switch to **LOW**. The light bar will indicate 'green' and the solenoid coil LED will light up.
- 2 Loosen jam nut on No. 2 relief cartridge. Adjust the relief cartridge (3/16 in. Allen Wrench) inward (CW) to raise pressure or outward (CCW) to lower the pressure.
- 3 Clamp a light load and check the pressure. Readjust as required. Tighten jam nut.
- 4 Move rocker switch to **HIGH**. The light bar will indicate 'red' and the solenoid coil LED will remain off.
- 5 Loosen jam nut on No. 3 relief cartridge. Adjust the relief cartridge (3/16 in. Allen Wrench) inward (CW) to raise pressure or outward (CCW) to lower the pressure
- 6 Clamp a heavy load and check the pressure. Readjust as required. Tighten jam nut.



Light Bar Kit



REF	QTY	PART NO.	DESCRIPTION	REF	QTY	PART NO.	DESCRIPTION
		6804769	Light Bar Kit - 12V	10	1	6804584	Mounting Bar
1	1	6804614	Switch Box Assembly ●	11	4	6405847	Capscrew, M4 x 20
2	1	6017897	Fuse, ATM type 5 amp	12	2	206323	Lockwasher M4
3	1	6058068	Valve Assembly ▲	13	2	763169	Capscrew, M6 x 20
4	2	6041432	Relief Cartridge	14	1	6076821	Red Lamp Assembly
5	2	669597	Seal Kit	15	1	217948	Red Lens
6	1	6014287	Solenoid Coil - 12V	16	1	6076819	Green Lamp Assembly
7	1	6058521	Solenoid Cartridge	17	1	217952	Green Lens
8	1	6090961	Solenoid Cable	18	4	686453	Nut, M6
9	1	6804585	Light Bar Assembly ■				

● Includes item 2.

▲ Includes items 4 - 8.

■ Includes items 10 - 18.

Do you have questions you need answered right now? Call your nearest Cascade Parts Department. Visit us online at www.cascorp.com

AMERICAS

**Cascade Corporation
Parts Sales**
2501 Sheridan Ave.
Springfield, OH 45505
Tel: 888-CASCADE (227-2233)
Fax: 888-329-0234

Cascade Canada Inc.
5570 Timberlea Blvd.
Mississauga, Ontario
Canada L4W-4M6
Tel: 905-629-7777
Fax: 905-629-7785

Cascade do Brasil
Rua João Guerra, 134
Macuco, Santos - SP
Brasil 11015-130
Tel: 55-13-2105-8800
Fax: 55-13-2105-8899

EUROPE-AFRICA

**Cascade Italia S.R.L.
European Headquarters**
Via Dell'Artigianato 1
37050 Vago di Lavagno (VR)
Italy
Tel: 39-045-8989111
Fax: 39-045-8989160

Cascade (Africa) Pty. Ltd.
PO Box 625, Isando 1600
60A Steel Road
Sparton, Kempton Park
South Africa
Tel: 27-11-975-9240
Fax: 27-11-394-1147

ASIA-PACIFIC

Cascade Japan Ltd.
2-23, 2-Chome,
Kukuchi Nishimachi
Amagasaki, Hyogo
Japan, 661-0978
Tel: 81-6-6420-9771
Fax: 81-6-6420-9777

Cascade Korea
121B 9L Namdong Ind.
Complex, 691-8 Gojan-Dong
Namdong-Ku
Inchon, Korea
Tel: +82-32-821-2051
Fax: +82-32-821-2055

Cascade-Xiamen
No. 668 Yangguang Rd.
Xinyang Industrial Zone
Haicang, Xiamen City
Fujian Province
P.R. China 361026
Tel: 86-592-651-2500
Fax: 86-592-651-2571

**Cascade India Material
Handling Private Limited**
No 34, Global Trade Centre
1/1 Rambaugh Colony
Lal Bahadur Shastri Road,
Navi Peth, Pune 411 030
(Maharashtra) India
Phone: +91 020 2432 5490
Fax: +91 020 2433 0881

Cascade Australia Pty. Ltd.
1445 Ipswich Road
Rocklea, QLD 4107
Australia
Tel: 1-800-227-223
Fax: +61 7 3373-7333

Cascade New Zealand
15 Ra Ora Drive
East Tamaki, Auckland
New Zealand
Tel: +64-9-273-9136
Fax: +64-9-273-9137

**Sunstream Industries
Pte. Ltd.**
18 Tuas South Street 5
Singapore 637796
Tel: +65-6795-7555
Fax: +65-6863-1368

