



# Installation Instructions

## Carton Clamp Automatic Overdrive Kits 6812536, 6812541

This sheet provides installation instructions, cartridge adjustment and parts list for Cascade Automatic Overdrive (AOD) Valves. When energized, the valve blocks the tank line causing the start pressure to increase to a higher pressure. This valve aids with increasing arm speed and slows within .50 in. (13 mm) of clamping a load. These kits are used on carton clamp attachments equipped with HFC.

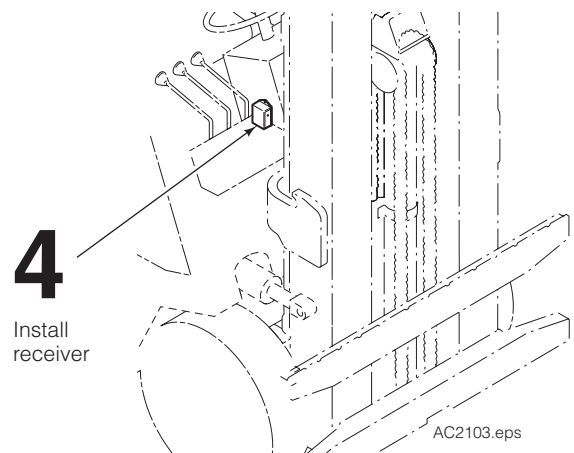
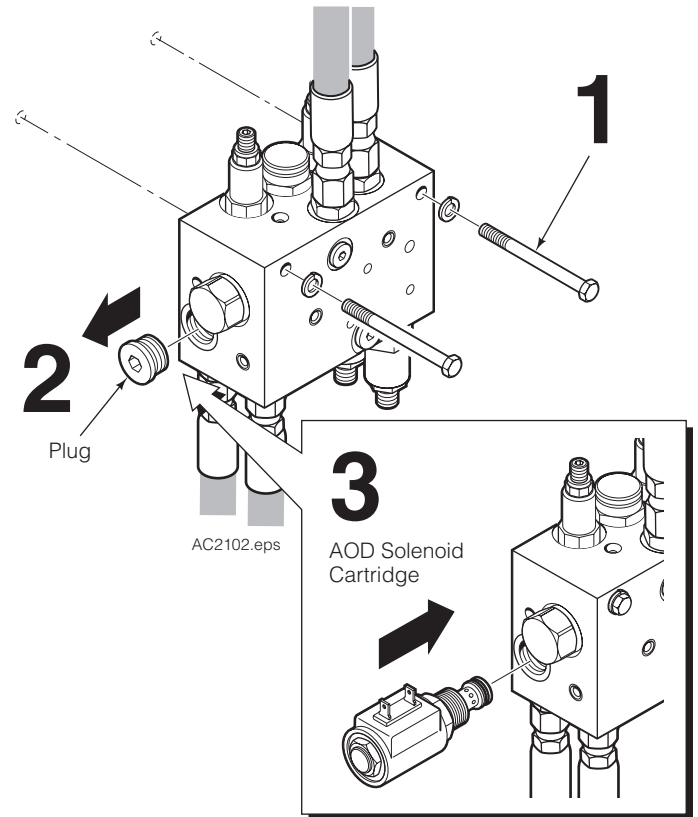


**WARNING:** Before removing hydraulic lines or components, relieve pressure in the hydraulic system. Turn truck off and open the truck auxiliary control valve(s) several times in both directions.

### INSTALLATION

- 1 If required, remove the capscrews to the HFC valve.
- 2 Remove the plug in HFC valve.
- 3 Install the AOD solenoid cartridge and tighten to 26 ft.-lbs. (36 Nm). Coil needs to be positioned so that "HYDRAFORCE" is to nut side.
- 4 Install the receiver above dashboard in an easy to view and accessible location for the driver. Provide at least 8 in. (20 cm) clearance between the driver and receiver.

**IMPORTANT:** The receiver must not be co-located or operating in conjunction with any other antenna or transmitter.



**cascade**<sup>®</sup>  
**corporation**

#### For Technical Support . . .

Call: 1-800-227-2233 Fax: 1-888-329-8207  
Internet: [www.cascorp.com](http://www.cascorp.com)  
Write: Cascade Corporation, PO Box 20187, Portland, OR 97294

#### To Order Parts . . .

Call: 1-888-227-2233 Fax: 1-888-329-0234  
Internet: [www.cascorp.com](http://www.cascorp.com)  
Write: Cascade Corporation, 2501 Sheridan Ave., Springfield, OH 45505

**CAUTION:** Consult the Lift Truck OEM for proper + power source connection.

**5** Disconnect the cable from the positive battery terminal.

**12V Systems** – Connect the fused positive wire from the cable harness to a 12V switched power source and the ground wire to a chassis ground.

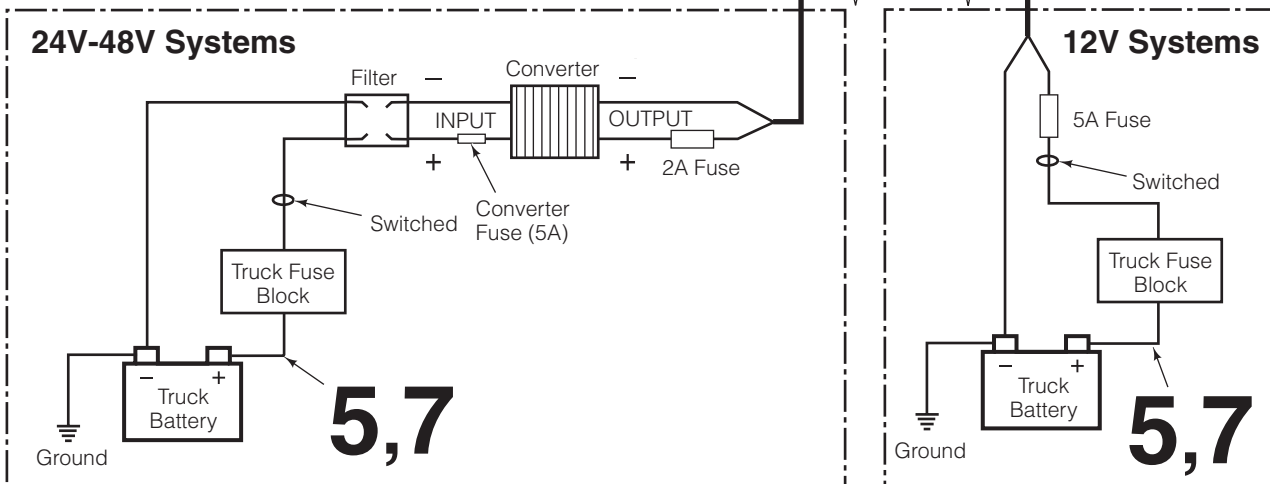
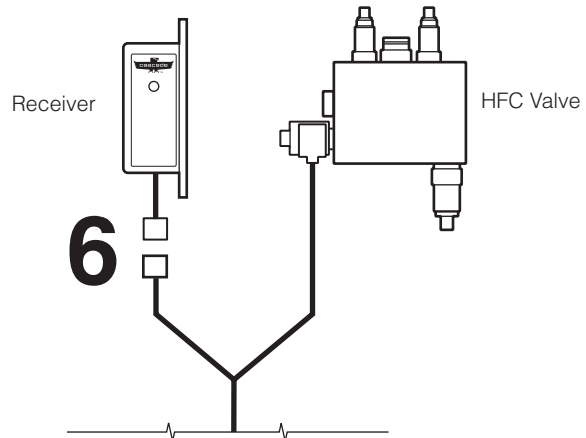
**24V-48V Systems** – Connect the fused positive wire from the cable harness to a DC-to-DC converter positive output wire and the ground wire to the converter negative output wire. Connect converter inputs to the voltage filter outputs. Connect a 24V-48V switched power source to the voltage filter input wire and connect the filter input ground wire to a chassis ground.

Check the cable routing for pinch points and clearance. Use wire ties as needed.

**NOTE: When installing on electric trucks, voltage filter 6061953 must be installed. Failure to install voltage filter can cause damage to electrical components.**

**6** Connect the transmitter cable end.

**7** Reconnect the positive battery cable to the battery.



**IC Trucks** – Use chassis ground  
**Electric Trucks** – Use battery ground

AC2104.eps

## RECEIVER OPERATION

Verify that the receiver has been properly connected to truck battery and transmitter is plugged into the battery. The light on the receiver and transmitter will operate as follows:

- **No signal light:** Check receiver supply voltage. If receiver voltage is not the problem, install charged battery on the transmitter.
- **Solid/flashing green:** Receiver and transmitter have adequate power and are working properly.
- **Solid/flashing red:** Transmitter battery is low, replace with charged battery.

**NOTE:** After one hour of inactivity, the transmitter goes into sleep mode to conserve power. Press and hold the transmit switch for two seconds to wake the unit of operation.

## TRANSMITTER BATTERY

**NOTE:** Charge new batteries prior to use.

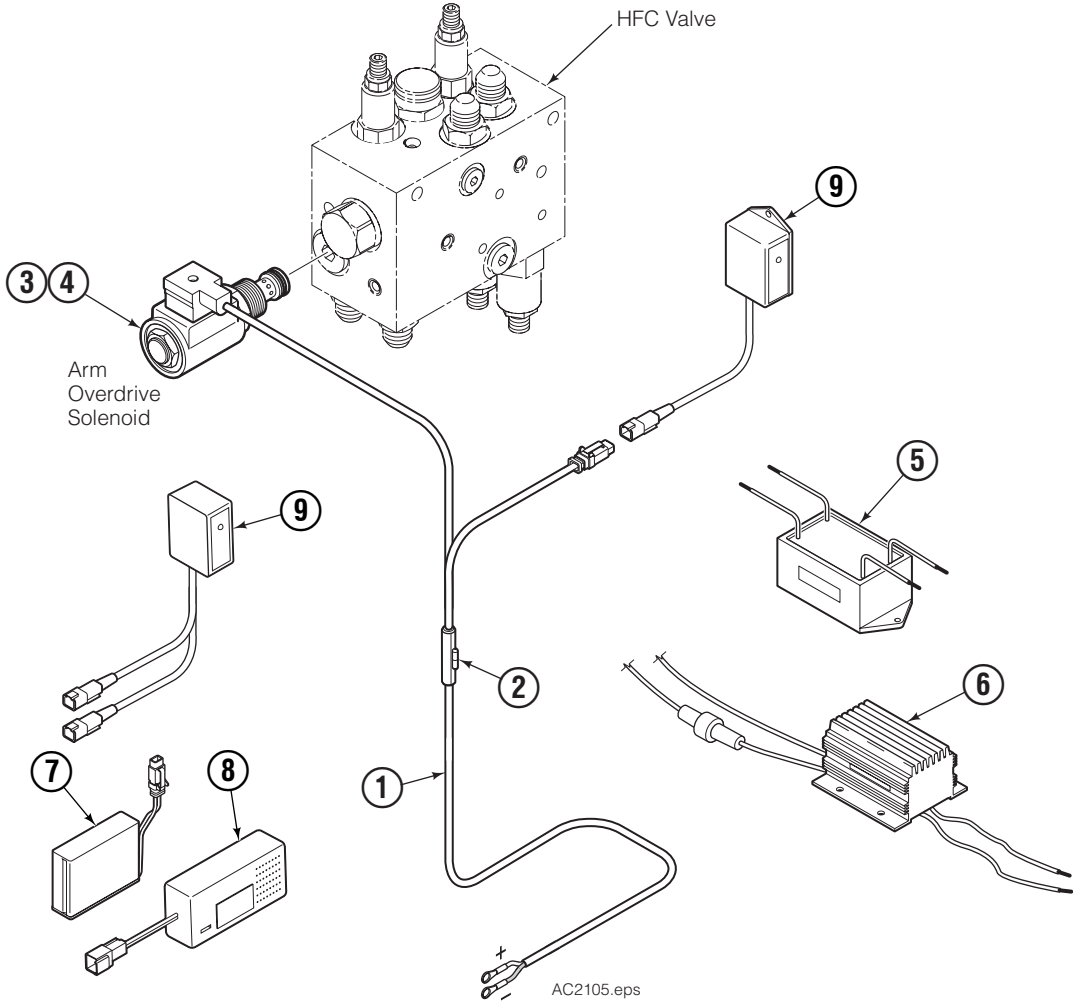
Chargers available are listed:

Location	Battery Charger
	Part No.
North America	6079239
Australia	6079700
United Kingdom	6079701
Europe	6079699

Voltage switch on the charger should be set to 10.8V/11.1V.

**NOTE:** To remove battery from clamp pad, disconnect the battery connector. Move the battery securing mechanism aside. Push down on the battery so that the mechanism will be easily accessed. Remove battery from enclosure.

# Parts – Automatic Overdrive Kits



REF	QTY	PART NO.	DESCRIPTION
		6812541	Arm Overdrive Kit – 12V ▲
		6812536	Arm Overdrive Kit – 24V-48V ◆
1	1	6818363	Power Wire Harness
2	1	6806707	Fuse – 5A
3	1	6014287	Coil – 12V
4	1	6040279	Solenoid Cartridge
5	1	6061953	Voltage Filter ■
6	1	6064659	Voltage Converter ■
7	1	6075736	Battery ●
8	1	6079239	Lithium Ion Battery Charger ●
9	1	6063028	RF Transceiver Kit ●

- ▲ Includes items 1-4.
- ◆ Includes items 1-6.
- Included in Voltage Converter Kit 217932.
- For reference only. Included in transmitter kit.

**Do you have questions you need answered right now?**

Call your nearest Cascade Service Department.  
Visit us online at [www.cascorp.com](http://www.cascorp.com)

**AMERICAS**

**Cascade Corporation  
U.S. Headquarters**  
2201 NE 201st  
Fairview, OR 97024-9718  
Tel: 800-CASCADE (227-2233)  
Fax: 888-329-8207

**Cascade Canada Inc.**  
5570 Timberlea Blvd.  
Mississauga, Ontario  
Canada L4W-4M6  
Tel: 905-629-7777  
Fax: 905-629-7785

**Cascade do Brasil**  
Rua João Guerra, 134  
Macuco, Santos - SP  
Brasil 11015-130  
Tel: 55-13-2105-8800  
Fax: 55-13-2105-8899

**EUROPE-AFRICA**

**Cascade Italia S.R.L.  
European Headquarters**  
Via Dell'Artigianato 1  
37050 Vago di Lavagno (VR)  
Italy  
Tel: 39-045-8989111  
Fax: 39-045-8989160

**Cascade (Africa) Pty. Ltd.**  
PO Box 625, Isando 1600  
60A Steel Road  
Sparton, Kempton Park  
South Africa  
Tel: 27-11-975-9240  
Fax: 27-11-394-1147

**ASIA-PACIFIC**

**Cascade Japan Ltd.**  
2-23, 2-Chome,  
Kukuchi Nishimachi  
Amagasaki, Hyogo  
Japan, 661-0978  
Tel: 81-6-6420-9771  
Fax: 81-6-6420-9777

**Cascade Korea**  
121B 9L Namdong Ind.  
Complex, 691-8 Gojan-Dong  
Namdong-Ku  
Inchon, Korea  
Tel: +82-32-821-2051  
Fax: +82-32-821-2055

**Cascade-Xiamen**  
No. 668 Yangguang Rd.  
Xinyang Industrial Zone  
Haicang, Xiamen City  
Fujian Province  
P.R. China 361026  
Tel: 86-592-651-2500  
Fax: 86-592-651-2571

**Cascade India Material  
Handling Private Limited**  
No 34, Global Trade Centre  
1/1 Rambaugh Colony  
Lal Bahadur Shastri Road,  
Navi Peth, Pune 411 030  
(Maharashtra) India  
Phone: +91 020 2432 5490  
Fax: +91 020 2433 0881

**Cascade Australia Pty. Ltd.**  
1445 Ipswich Road  
Rocklea, QLD 4107  
Australia  
Tel: 1-800-227-223  
Fax: +61 7 3373-7333

**Cascade New Zealand**  
15 Ra Ora Drive  
East Tamaki, Auckland  
New Zealand  
Tel: +64-9-273-9136  
Fax: +64-9-273-9137

**Sunstream Industries  
Pte. Ltd.**  
18 Tuas South Street 5  
Singapore 637796  
Tel: +65-6795-7555  
Fax: +65-6863-1368

