



Number 144

December 1984

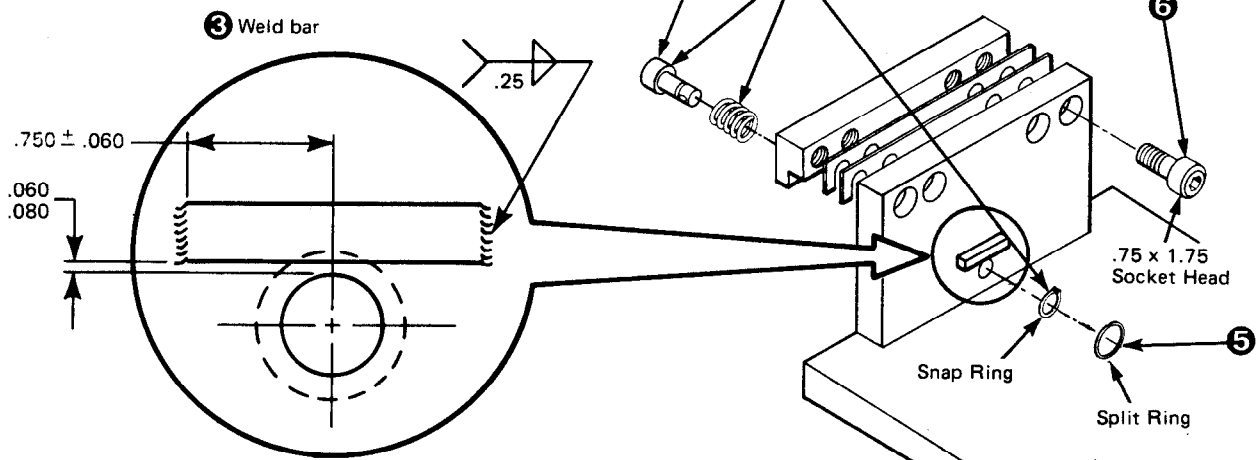
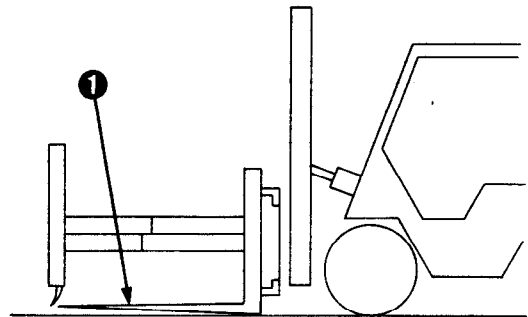
Technical Bulletin

30C/45C Load Push/Pull Platen Pin Service Kits 674223 and 674224 Installation Instructions

Platen Pin Service Kits 674223 (30C) and 674224 (45C) include the following parts:

30C		45C	
2	673794 Split Ring	2	673794 Split Ring
2	669600 Spring	2	669600 Spring
2	669602 Pin	2	669603 Pin
2	3117 Snap Ring	2	3117 Snap Ring
2	682661 Bar	2	682661 Bar

- 1 Lower the attachment to lightly rest the platens flat on the ground. Remove the capscrews fastening the platen hooks to the frame. Remove the platens. Note the number of shims used for each platen.
- 2 Remove the old pin assemblies from the platens.
- 3 Weld a bar to each platen above the pin assembly hole using the dimensions shown. Use FCAW E70T1 low hydrogen rod to make a .25 in. weld on both ends only.
- 4 Install the new pins and springs into the platens. Push the pin ends through the platens to expose the snap ring grooves. Install the snap rings.
- 5 Wind the split rings through the pin holes.
- 6 Reinstall the platens, hooks and shims to the frame. Tighten the capscrews to a torque of 200-210 ft.-lbs.



Part No. 676345 R-1

cascade®

For Technical Assistance . . .

Call/ 1-800-CASCADE or 503-669-6300

OR

Write: Cascade Corporation, P.O. Box 20187, Portland, OR 97220

To Order Parts . . .

Call: 513-322-1199

OR

Write: Cascade Corporation, P.O. Box 360, Springfield, OH 45505