



Number 128

October 1983

# Technical Bulletin

## Cylinder Rod End Anchor Nut Removal and Installation

**MODELS:** All Cascade "C" and "D" series attachments except Pivot Arm Paper Roll Clamps and Load Push/Pulls.

**PROBLEM:** Removal of the cylinder anchor nut with an air wrench may cause the piston nut to loosen.

**SOLUTION:** **"C" SERIES ATTACHMENTS**— Pry the locking cone completely away from the slot in the cylinder rod end. Follow the service procedures below.

**"D" SERIES ATTACHMENTS**— Use a wrench on the hex rod washer to keep the cylinder rod from rotating while removing the anchor nut.

1. Extend the cylinder rods to mid stroke. Do not fully extend the rods.

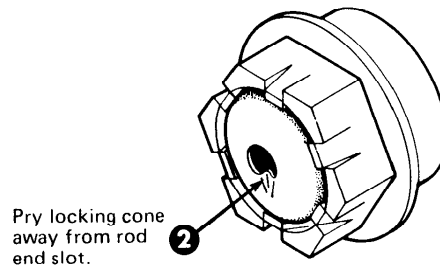
2. **"C" Series Attachments**— Pry the locking cone completely away from the slot in the rod end with a screw driver or small punch. If the locking cone is destroyed, the nut assembly must be replaced. See nut application chart at right.

**"D" Series Attachments**— Proceed to step 3.

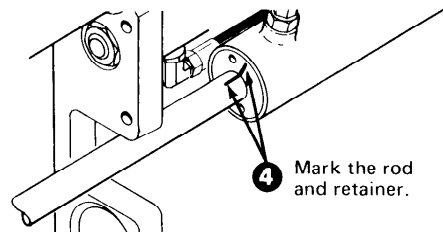
3. Remove oil and dirt from the cylinder rod and retainer with cleaning solvent.

4. Mark the rod and retainer as shown with a marking pen. Do not use "scratches" to mark. The marks on the rod and retainer must remain lined up during anchor nut removal.

"C" Series



| Model                                 | Anchor Nut Part No. |
|---------------------------------------|---------------------|
| C2, C3, C5 (Carton Clamp)<br>20C, 35C | 665641              |
| 20C (Appliance Clamp)                 | 665560              |
| C3 (Roll Clamp), C4, C5, 60C          | 665642              |
| C6, C7                                | 665643              |
| 20D, 25D, 35D                         | 667625              |
| 40D, 50D, 60D                         | 667688              |



# cascade<sup>®</sup> corporation

1000 Box 20187 • Portland, Oregon 97228 • (503) 251-3100  
1000 Box 380 • Springfield, Ohio 45505 • (513) 776-9771

Do you have questions?  
You can't meet our  
standards?  
We'll prove it!  
Call today!  
1-800-333-3333

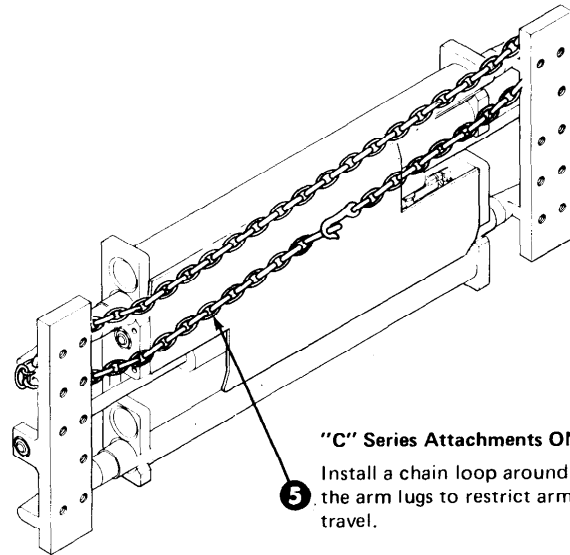
5. **"C" Series Attachments Only**- Install a chain loop around the arms to restrict arm travel. The chain must meet or exceed the work load rating specification for your clamp model shown in the chart. Power the attachment arms out against the chains while performing step 6.

When powering out the arms against the chains a high friction area is being created against the arm lug, counter-bored washer and cylinder rod shoulder. This should keep the rod from turning while removing the nut.



**WARNING:** The chain must meet or exceed the work load rating specification for your clamp model shown in the chart.

| Model   | Applied Load-Lbs. | Chain Work Load Rating - Lbs. (one loop - two equal tension legs) |
|---------|-------------------|---|
| C2, 20C | 10,000            | 5,000   |
| C3      | 12,5000           | 6,250   |
| C4, 35C | 18,000            | 9,000   |
| C5      | 24,000            | 12,000  |
| C6, 60C | 28,000            | 14,000  |
| C7      | 36,000            | 18,000  |
| C8      | 40,000            | 20,000  |



**"C" Series Attachments ONLY**

Install a chain loop around the arm lugs to restrict arm travel.



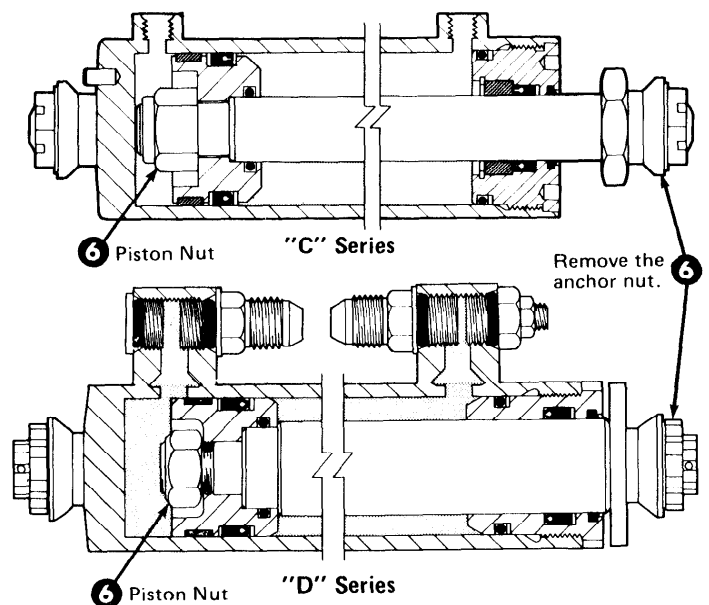
**WARNING:** Do not use air/impact tools for cylinder rod end anchor nut removal.

6. Remove the anchor nut. On a "D" series attachment use a wrench on the hex rod washer to keep the cylinder rod from rotating. If the rod has turned during nut removal, the cylinder must be disassembled to retighten the piston nut to the torque values shown below.



**WARNING:** Failure to retighten the piston nut if the rod has rotated during disassembly may cause rod disengagement from the piston.

| Model                        | Piston Nut Torque Values |
|------------------------------|--------------------------|
| C2, C3, 20C, 35C             | 60-70 ft.-lbs.           |
| C3 (Roll Clamp), C4, C5      | 140-170 ft.-lbs.         |
| C4 (Roll Clamp), C6, C7, 60C | 300-350 ft.-lbs.         |
| 20D, 25D, 35D                | 55-70 ft.-lbs.           |
| 40D, 50D, 60D                | 90-110 ft.-lbs.          |



6 Piston Nut "C" Series

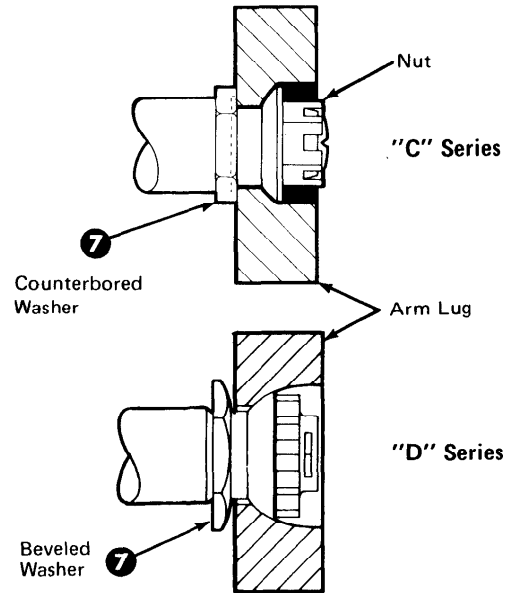
Remove the anchor nut. 6

6 Piston Nut "D" Series

7. **"C" Series Attachments**- Install the rod washer with the counterbore facing the nut. Engage the rod end into the arm lug. Apply anti-seize compound to the rod threads. With the chain loop around the arms, power the attachment arms out against the chains while installing and tightening the nuts to the torque values below.

**"D" Series Attachments**- Install the rod beveled washer with the beveled side facing the nut. Engage the rod end into the arm lug. Apply anti-seize compound to the rod threads. Install the nut and tighten to the torque values below while holding the beveled washer with a wrench.

| Model                                  | Anchor Nut Torque Values             |
|--|--------------------------------------|
| C2, C3, C5 (Carton Clamp)<br>20C, 35C  | 55-65 ft.-lbs.                       |
| C3 (Roll Clamp), C4, C5, 60C<br>C6, C7 | 130-150 ft.-lbs.<br>200-230 ft.-lbs. |
| All "D" Series                         | 150-175 ft.-lbs.                     |



8. **"C" Series Attachments**- Lock the nut in place by staking the locking cone into the rod end slot with a case hardened chisel. Positive engagement is required.

**"D" Series Attachments**- Install the nut retainer and cotter pin.

