

Technical Bulletin

Single-Double Pallet Handler Fork Stop Modifications and Sideshift Cylinder Anchor and Latch Housing Replacement

This sheet describes the following modifications to the single-double pallet handler:

- Tighten the arm capscrews.
- Installation of additional inner fork lower stop setscrews.
- The inner fork latch housings and plates are being replaced.
- The carriage sideshift cylinder anchor is being replaced.
- The mounting plate sideshift cylinder anchor must be modified which requires heating and bending.

Arm Capscrew Tightening

Tighten the arm capscrews to a torque of 280-320 ft.-lbs. (380-434 Nm).

Inner Fork Lower Stop Setscrew Installation

- 1 Remove the lower outer capscrews from the frame.
- 2 Install the setscrew in the hole and thread in until it stops against the frame. Reinstall the capscrews and tighten to a torque of 75-85 ft.-lbs. (100-115 Nm).

Inner Fork Latch Housing and Plate Replacement

- 1 Extend the outer forks just outside the width of the frame.
- 2 Remove the latch housing assembly from each inner fork.
- 3 Remove the latch plates and springs from the old housings. Install the new latch plates and old springs into the new housings. Install the housing assemblies to the inner forks. Tighten the capscrews to a torque of 75-85 ft.-lbs. (100-115 Nm).

NOTE: This information should not be interpreted as the basis for warranty claims unless so designated.

Part No. 205368

cascade®

For Technical Support . . .

Call: 1-800-227-2233

OR

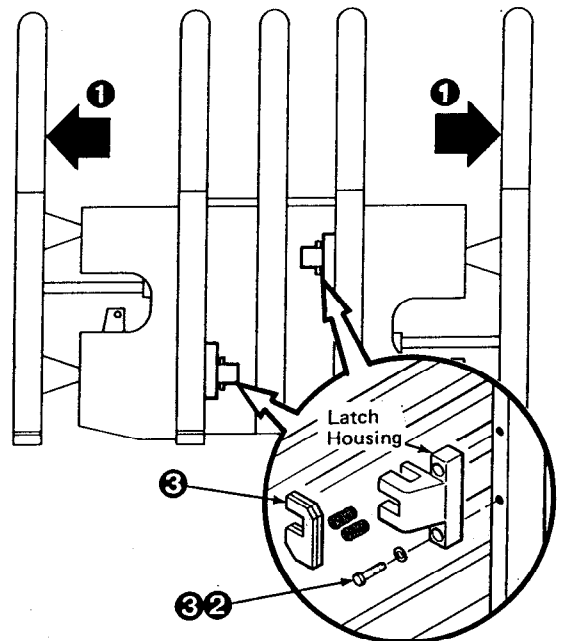
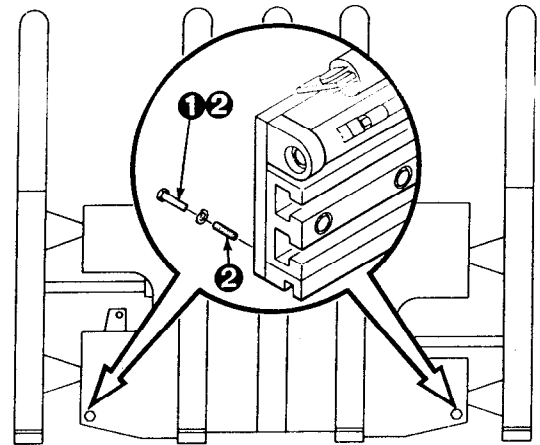
Write: Cascade Corporation, P.O. Box 20187, Portland, OR 97220

To Order Parts . . .

Call: 1-888-227-2233

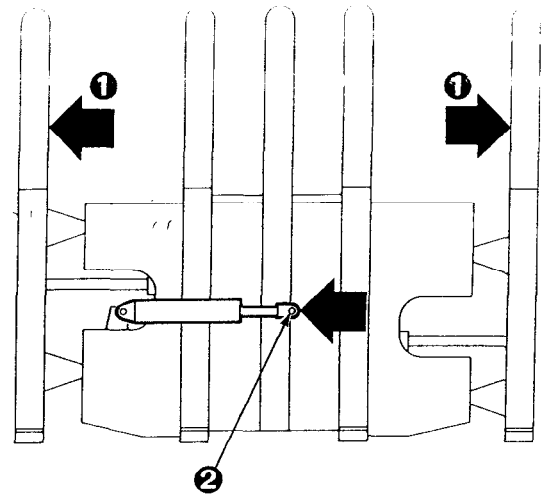
OR

Write: Cascade Corporation, 2501 Sheridan Ave., Springfield, OH 45505



Carriage Sideshift Cylinder Anchor Replacement

- ❶ Extend the outer forks just outside the width of the frame.
- ❷ Remove the cotter pin and clevis pin from the carriage cylinder anchor. Retract the sideshift cylinder.



- ❸ Disconnect the lower hooks.

Bolt On Type – Remove the lower mounting hooks. For reassembly, tighten the capscrews to a torque of 105-115 ft.-lbs. (140-155 Nm).

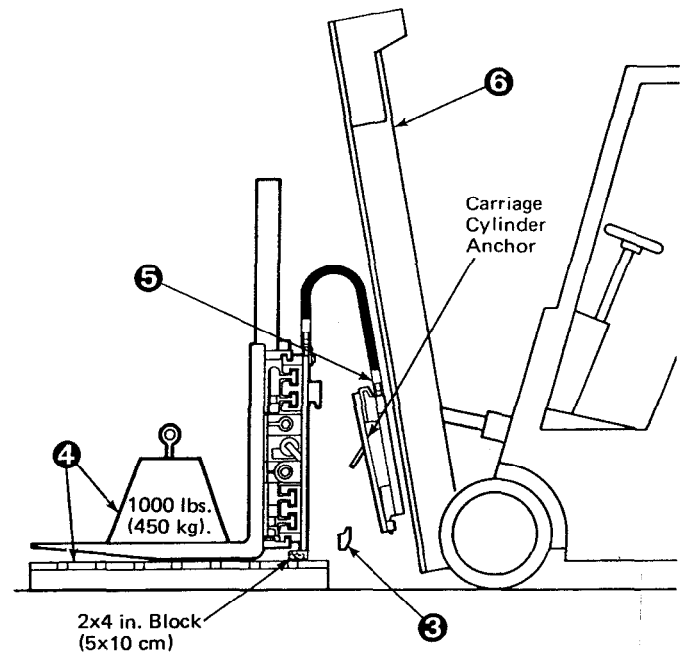
Quick Change Type – Pull out the retaining pin, slide the hook down and reinstall the pin in the lower hole. For reassembly, slide the hook up and install the pin in the top hole.

- ❹ Place a pallet under the attachment. Lower the mast carriage until the attachment is resting on the pallet with 2 X 4 in. (5 X 10 cm) blocks placed as shown. Set a 1000 lb. (450 kg.) weight on the forks to hold the attachment upright.



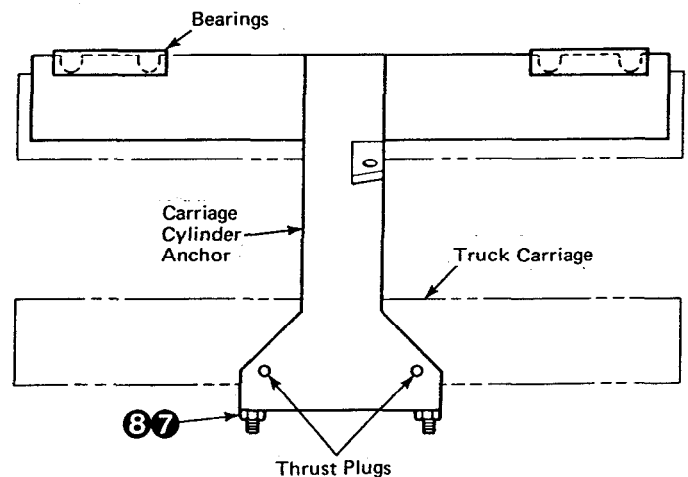
WARNING: Before removing the supply hoses, relieve pressure in the hydraulic system. Turn the truck off, then open the truck auxiliary control valves several times in both directions.

- ❺ Disconnect and plug the truck supply hoses to the attachment. Tag the hoses for reassembly.
- ❻ Make sure the weight on the forks is secure. Lower the mast carriage to clear the upper mounting hooks. Back the truck away. The carriage cylinder anchor will stay on the truck.



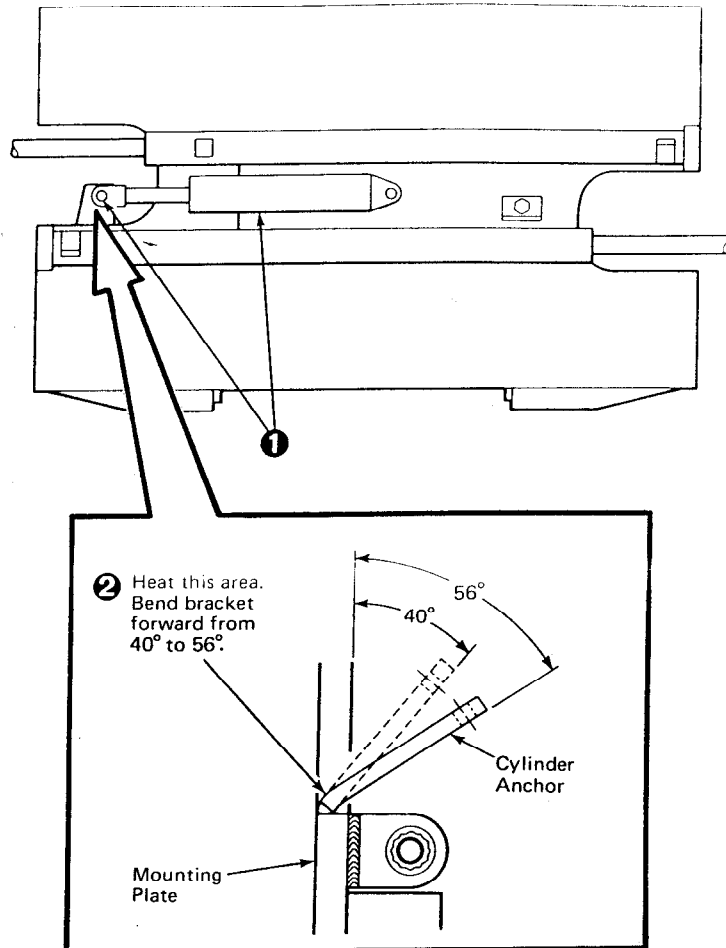
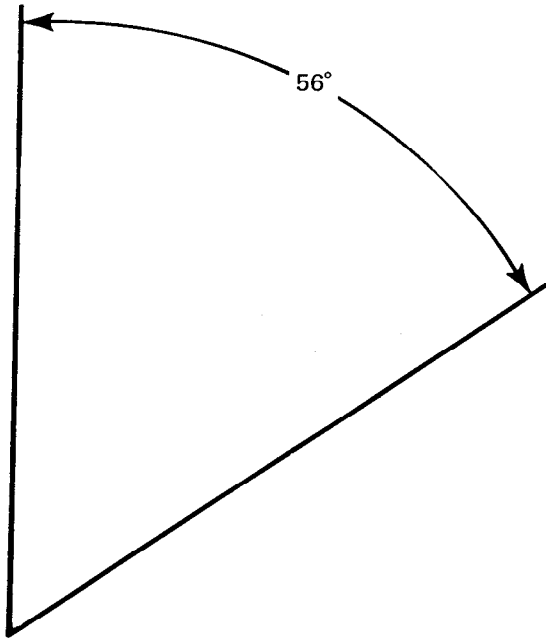
- ❼ Remove the carriage cylinder anchor from the truck carriage by loosening the two locknuts and backing out the setscrews.

- ❸ Install the new carriage cylinder anchor on the truck carriage. Install the bearings and thrust plugs. Tighten the setscrews to a torque of 75-85 ft.-lbs. (102-115 Nm). Tighten the locknuts to a torque of 75-85 ft.-lbs. (102-115 Nm).



Mounting Plate Sideshift Cylinder Anchor Modification

- 1 Remove the cotter pin and clevis pin from the rod end of the sideshift cylinder. Move the sideshift cylinder away from the mounting plate cylinder anchor.
- 2 Heat the mounting plate cylinder anchor with a torch at the base. Bend the cylinder anchor forward from 40° to 56°. Check the anchor angle against the angle shown below.



- 3 Mount the attachment on the carriage cylinder anchor. Reinstall the lower hooks. Connect the truck hoses to the attachment fittings.
- 4 Extend the sideshift cylinder to engage the cylinder anchor bracket. Install the clevis pin and cotter pin.