

# Technical Bulletin

## Attachment Stop Blocks

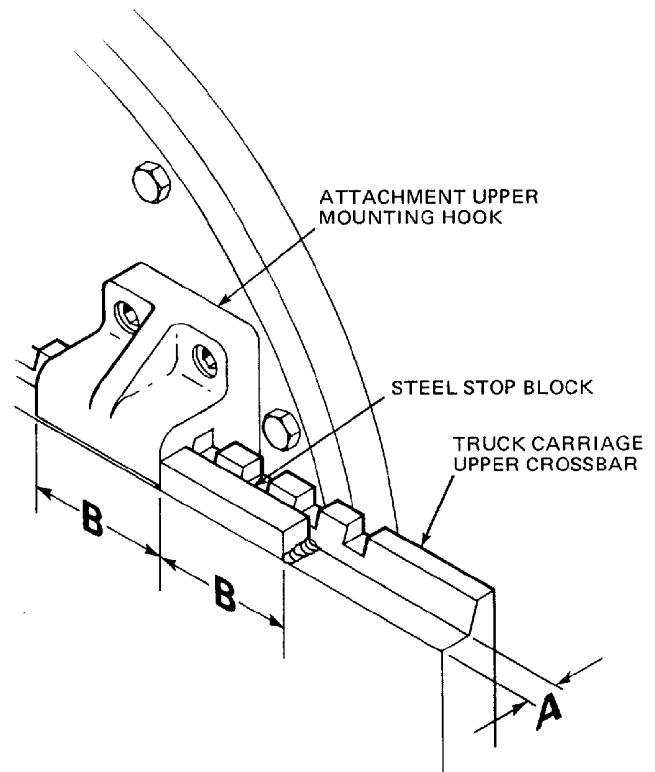
This Bulletin describes a procedure to provide improved retention against side-to-side movement of an attachment on a truck hook-type carriage.

Cascade recommends that a steel stop block be permanently welded on each side of the truck carriage upper crossbar adjacent to each attachment upper mounting hook as shown by the accompanying diagram.

This added security to the attachment's centering lug will improve the ability of the attachment to resist side forces that try to drive the attachment off either end of the carriage. And since the problem of retaining attachments against side-to-side forces is not unique to Cascade units, it would be to your benefit to install some type of permanent stop block for all of your attachments, no matter what brand or model.

To perform the installation:

1. Select square steel stock with a width approximately equal to the flat of the carriage upper crossbar (dimension A).
2. Cut two blocks from the square steel stock, each about as long as the width of the attachment upper mounting hook (dimension B).
3. With the attachment installed, position the block adjacent to the attachment upper mounting hooks. The blocks should not extend behind the flat of the carriage upper crossbar (dimension A).
4. Weld the blocks in place. Make sure you protect adjacent hoses and hydraulic components from weld splatter.



**cascade<sup>®</sup>**  
**corporation**

P.O. Box 20187 • Portland, Oregon 97220 • (503) 666-1511  
P.O. Box 360 • Springfield, Ohio 45505 • (513) 325-9271

Do you have questions  
you need answered  
right now?

Dial Directline  
800-547-5266  
(toll free)