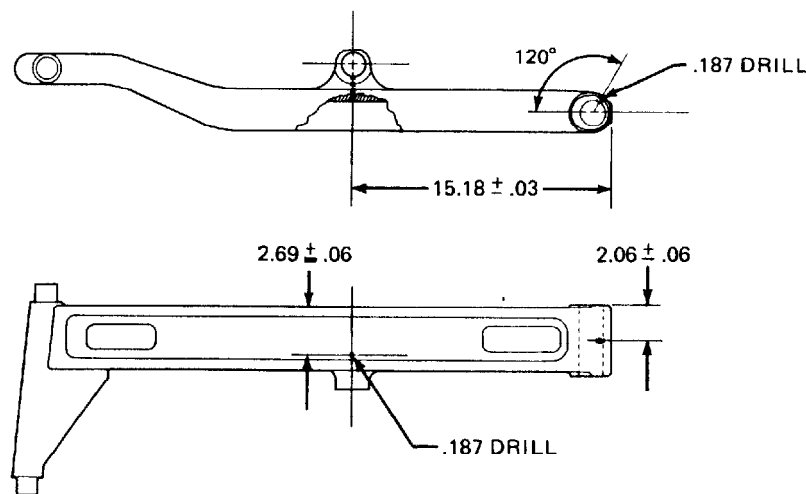


Technical Bulletin

45C Load Push/Pull Arm Pivot Point Zerk Grease Fitting Installation

Cascade Load Push/Pulls are designed using hard chrome plated pins and teflon bushings at all pivot points. This combination of pins and bushings offers a clean, efficient and trouble free pivot point for most applications. In extra heavy duty, multiple shift/high cycle operations or where corrosive materials are handled, it may be desirable to lubricate the arm pivot points. The illustrations below detail our recommendations for installing zerk grease fittings.

1. Disconnect each arm pivot point from the attachment and modify one at a time, then reassemble.
2. Locate each drilling location as shown in the illustrations. Drill each hole using a 3/16" drill bit.
3. Install the zerk fittings (Alemite 1728-B or similar) using a drive tool (Alemite 5233 or similar).



UPPER SECONDARY ARM

Note: This information is not to be interpreted as the basis for warranty claim unless previously authorized by a Cascade Service Representative.

cascade[®] corporation

For Technical Assistance . . .

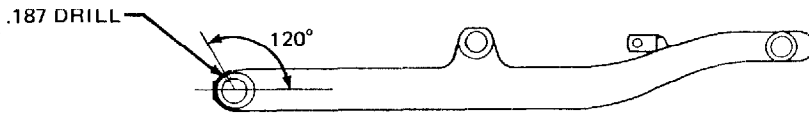
Call: 1-800-CASCADE or 503-666-1518
OR

Write: Cascade Corporation, P.O. Box 20187, Portland, OR 97220

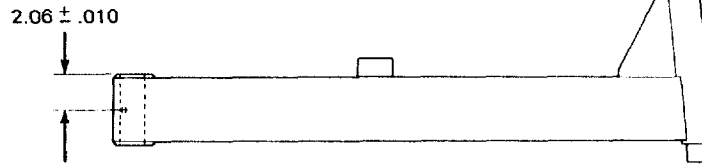
To Order Parts . . .

Call: 513-322-1199
OR

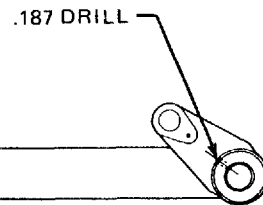
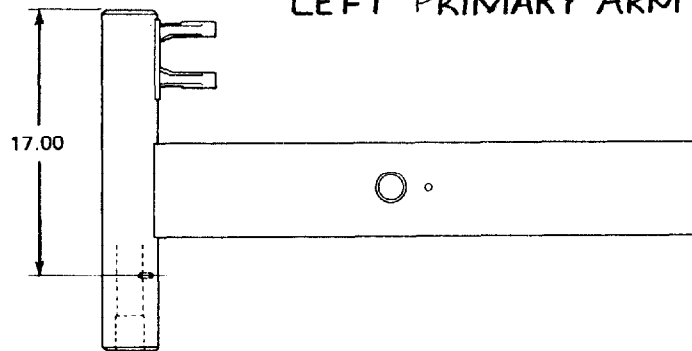
Write: Cascade Corporation, P.O. Box 360 Springfield, OH 45505



LOWER SECONDARY ARM



LEFT PRIMARY ARM



RIGHT PRIMARY ARM

