



Parts Manual

Model 66G-RDP Roll Clamp

Serial Number 570383SG

cascade[®]
corporation

For Technical Assistance call: 800-227-2233, Fax: 888-329-8207

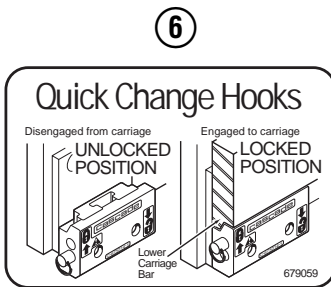
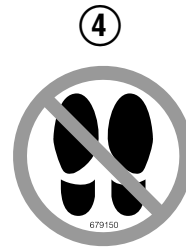
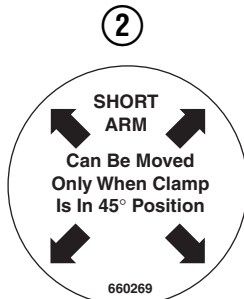
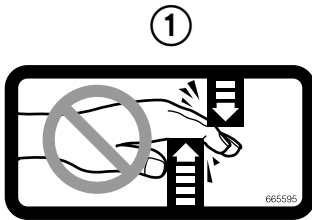
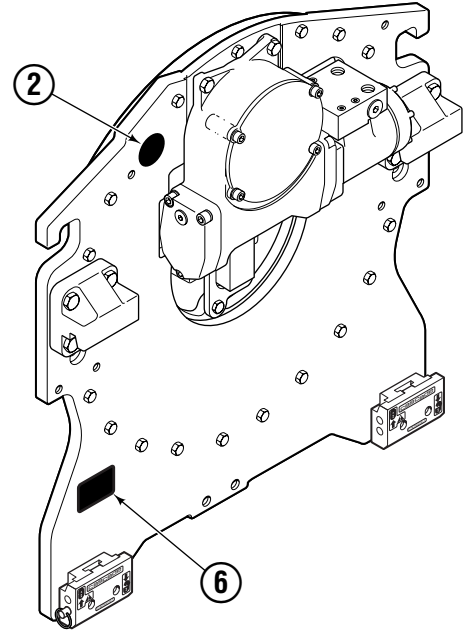
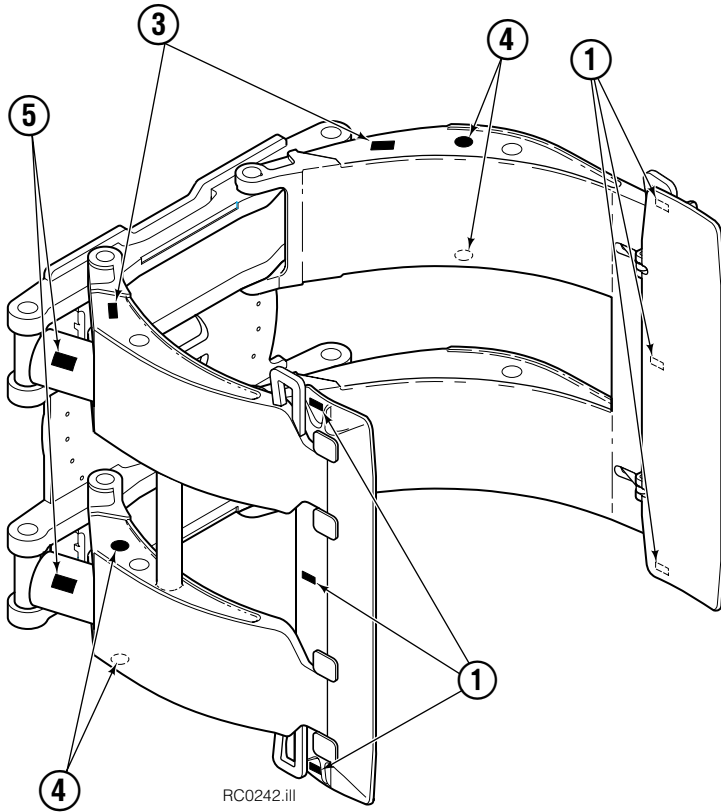
To Order Parts call: 888-227-2233, Fax: 888-329-0234

OR

Write: Cascade Corporation, P.O. Box 20187, Portland, OR 97220

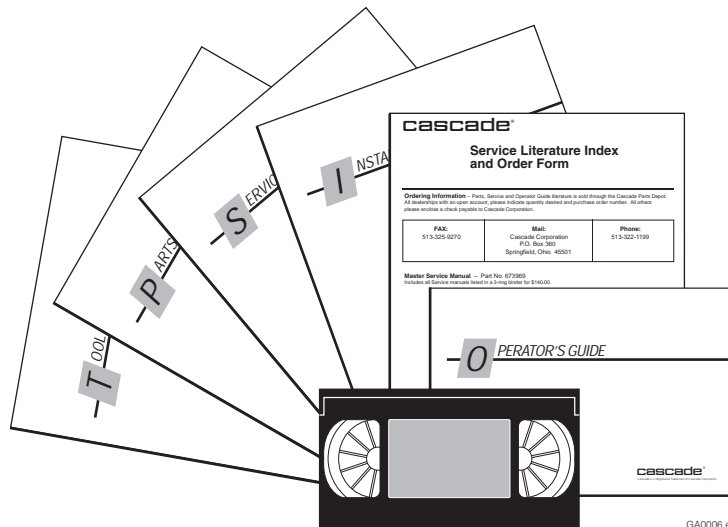
Internet: www.cascorp.com

Decals



66G			
REF	QTY	PART NO.	DESCRIPTION
1	4	665595	No Hand Hold Decal
2	2	660269	Short Arm Rotation Position Decal
3	6	656038	Caution Decal
4	4	679150	No Step Decal
5	4	665677	Trapped Pressure Decal
6	1	679059	Quick-Change Hook Decal
7	1	671167	Oil Fill Tag (not shown)
		212926	Decal Kit, (items 1-7)

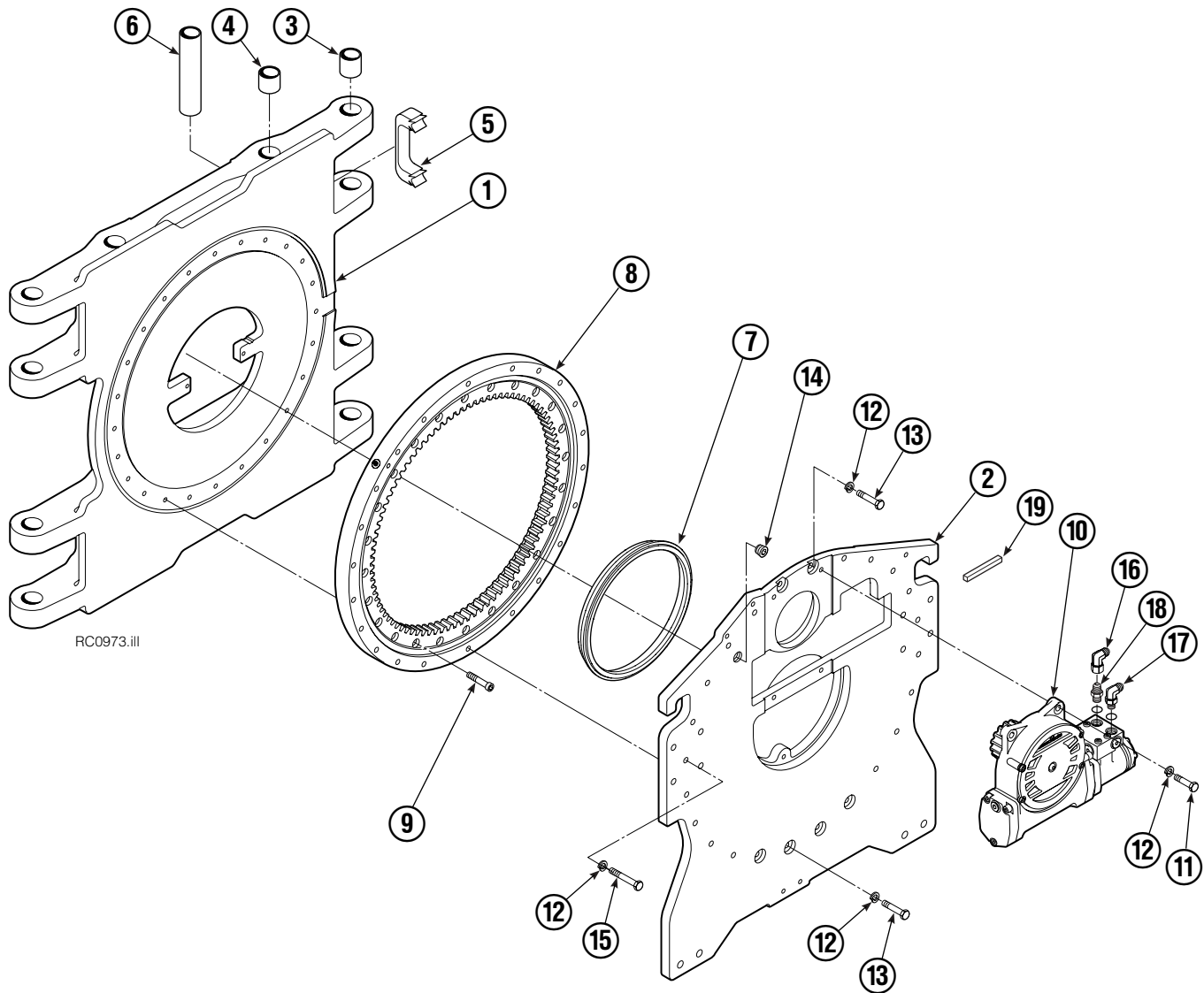
Publications



GA0006.eps

66G	
PART NO.	DESCRIPTION
	Parts Manual
213744	Service Manual
210135	Operator's Guide
212420	Installation Instructions - Fixed Frame
677555	Driver Training Video - VHS
679929	Tool Catalog
673964	Literature Index Order Form

Frame Group

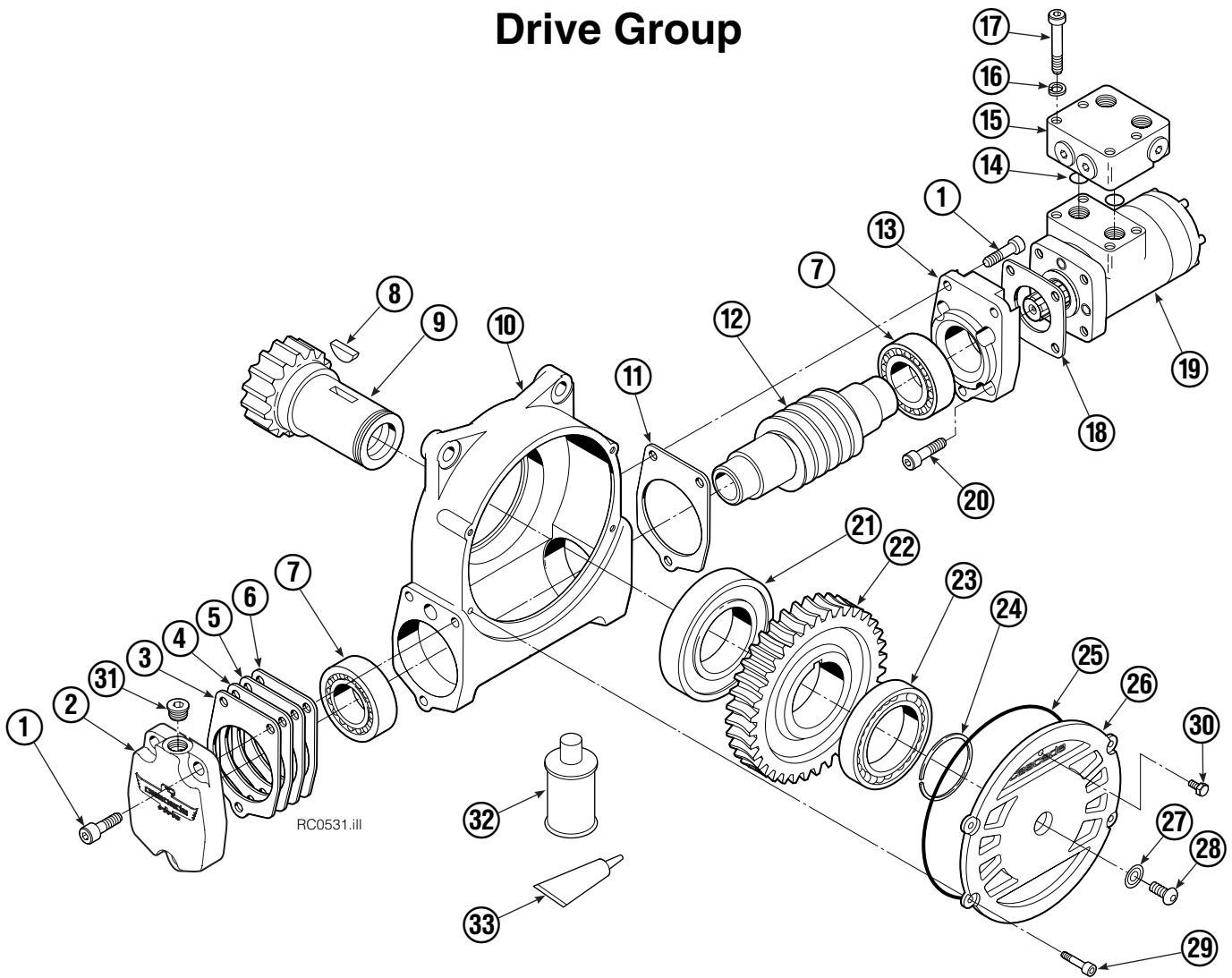


66G							
REF	QTY	PART NO.	DESCRIPTION	REF	QTY	PART NO.	DESCRIPTION
		6022315	Frame Group – 51 in. ▲	13	6	209684	Capscrew, M12 x 50
1	1	6022316	Frame	14	1	6605	Fitting, 3/4 in.
2	1	213981	Baseplate	15	18	213900	Capscrew, M12 x 60
3	8	211718	Bearing	16	1	605761	Fitting, 8-8 ◆
4	8	211717	Bearing	17	1	601250	Fitting, 8-8 ◆
5	4	211712	Hose Guard	18	1	601377	Fitting, 8-8 ◆
6	4	209987	Spacer	19	1	669344	Stop Block Kit
7	1	209944	Seal			212905	Bearing Service Kit (items 3, 4, 6)
8	1	213983	Bearing Assembly			212907	Pin Service Kit (items 4, 6)
9	24	213902	Capscrew, M12 x 45			212908	Pin Service Kit (item 3)
10	1	212308	Drive Group – 2.2 c.i. Motor ●			216440	Bearing Kit (items 8, 9, 12, 13, 15)
	1	795491	Drive Group – 2.8 c.i. Motor ●			212917	Drive Group Kit – 2.2 (items 10,11,12)
11	4	211689	Capscrew, M12 x 30			212918	Drive Group Kit – 2.8 (items 10,11,12)
12	28	683822	Lockwasher, M12				

- ▲ Maximum roll handling capacity.
- See Drive Group page for parts breakdown.
- ◆ Included in Fitting Group 212367.

Reference: S-4650, S-4506, S-4188, S-4733.
Common Parts Groups 211975, 213986.
Baseplate Group 213834.

Drive Group



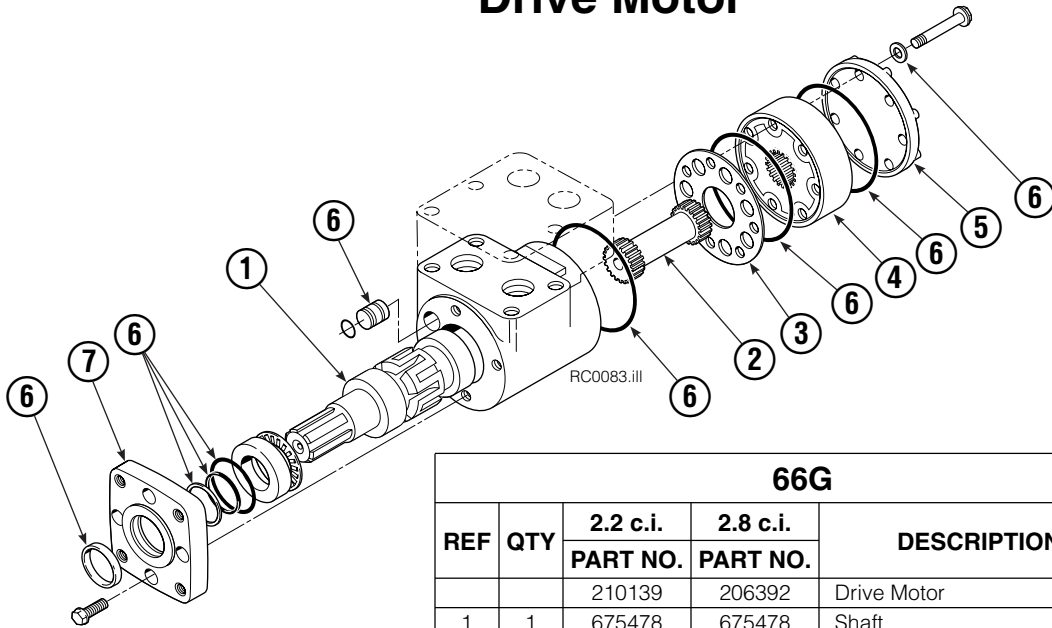
66G							
REF	QTY	PART NO.	DESCRIPTION	REF	QTY	PART NO.	DESCRIPTION
		212308	Drive Group with 2.2 c.i. Motor	19	1	210139	Drive Motor – 2.2 c.i. ▲
		795491	Drive Group with 2.8 c.i. Motor		1	206392	Drive Motor – 2.8 c.i. ▲
1	6	768826	Capscrew, M12 x 25	20	4	4468	Capscrew, 3/8 NC x .75 GR8
2	1	211774	Cover	21	1	670580	Bearing
3	●	674513	Shim – .005 in. (blue)	22	1	675609	Worm Gear
4	●	670574	Shim – .010 in. (brown)	23	1	670581	Bearing
5	●	671757	Shim – .015 in. (pink)	24	1	7214	Snap Ring
6	●	671758	Shim – .020 in. (yellow)	25	1	204970	Gasket
7	1	670579	Bearing	26	1	775552	Cover
8	1	670582	Key	27	1	783609	Seal
9	1	670506	Pinion	28	1	783608	Capscrew, M12 x 16
10	1	775551	Housing	29	4	775639	Capscrew, M8 x 20
11	1	686465	Gasket	30	1	644010	Relief Fitting
12	1	675608	Worm	31	1	604510	Fitting, 6
13	1	775553	Adapter	32	1	656300	Gear Box Lube – 48 oz.
14	2	2705	O-Ring	33	1	668184	Sealant
15	1	670549	Check Valve			670578	Shim Service Kit (items 3-6, 11, 33)
16	4	6444	Lockwasher, 5/16			675637	Shim Service Kit (items 21, 33)
17	4	607059	Capscrew, 5/16 NC x 1.75 GR8			675638	Shim Service Kit (items 3-7)
18	1	670575	Gasket			212919	Motor Kit-2.2 (items 11,14,18,19,20,33)
						212920	Motor Kit-2.8 (items 11,14,18,19,20,33)

● Quantity as required.

▲ See Drive Motor page for parts breakdown.

Reference: Common Parts Group 795490, SKN-5527.

Drive Motor

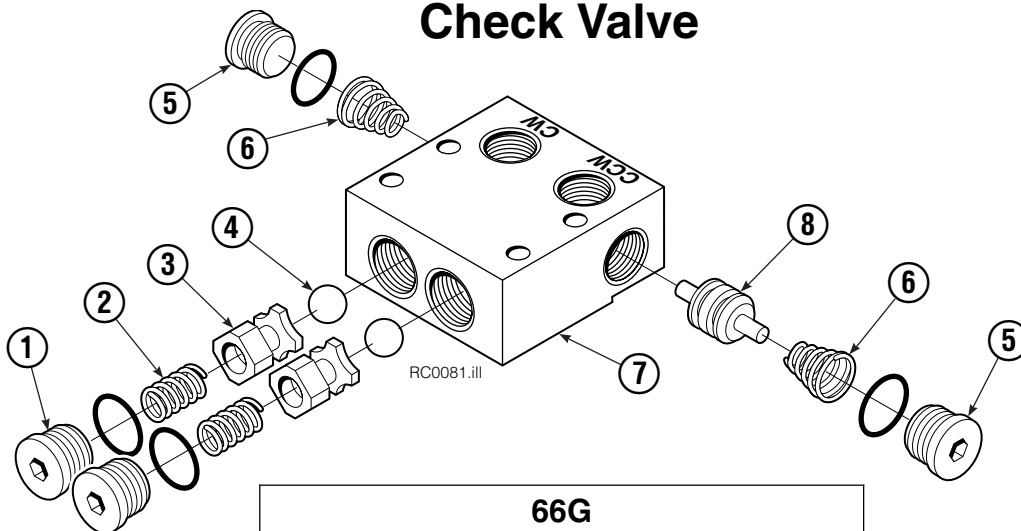


66G				
REF	QTY	2.2 c.i.	2.8 c.i.	DESCRIPTION
		PART NO.	PART NO.	
		210139	206392	Drive Motor
1	1	675478	675478	Shaft
2	1	675477	675477	Drive Link
3	1	211528	675479	Spacer Plate
4	1	210137	675480	Geroler/Gerotor Set
5	1	211527	675482	End Cap
6	1	206405	206405	Service Kit ●
7	1	685090	685090	Flange

Cascade provides service replacement parts for the listed parts only. Due to cost, if other parts need replacement, the Drive Motor should be replaced.

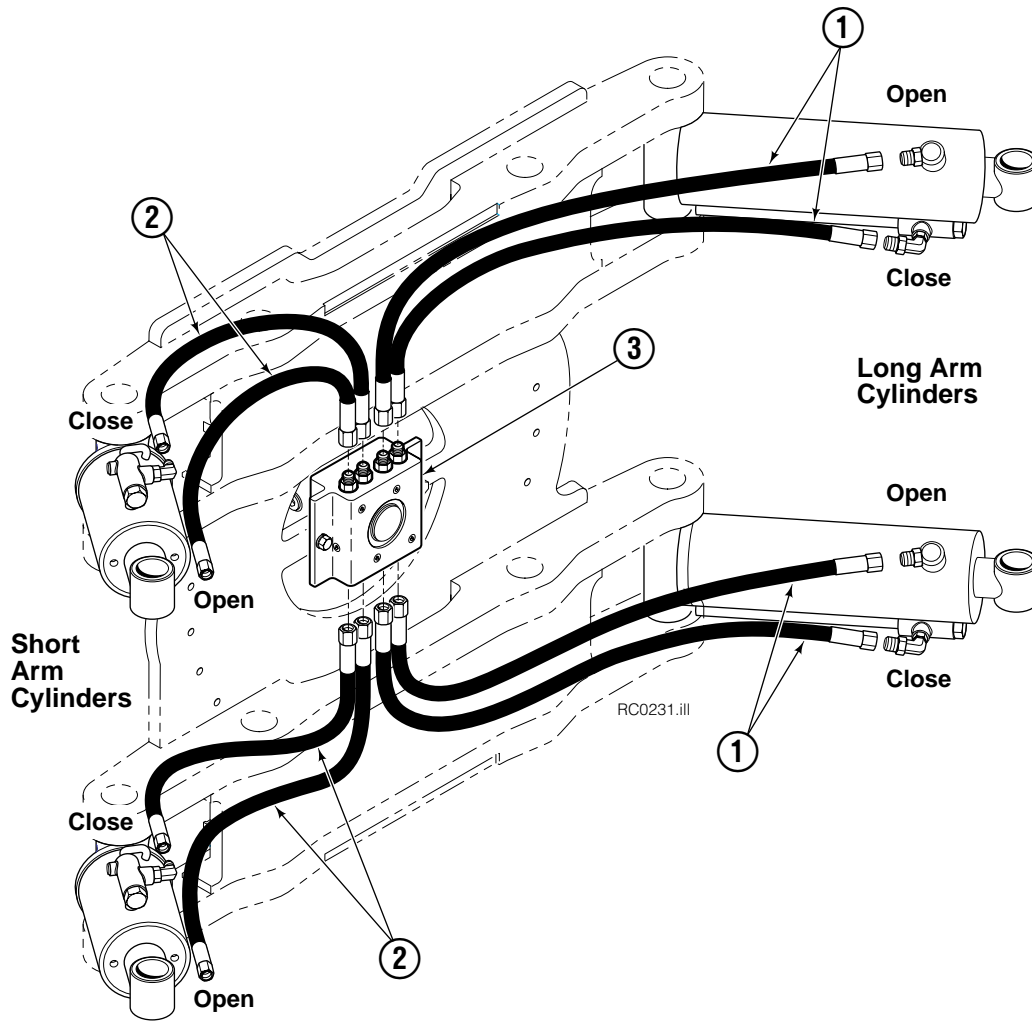
- Compatible with water glycol based hydraulic fluids.

Check Valve



66G			
REF	QTY	PART NO.	DESCRIPTION
		670549	Check Valve Assembly
1	2	609453	Fitting, 10
2	2	670552	Spring
3	2	670551	Guide
4	2	7020	Ball
5	2	602580	Fitting, 8
6	2	673989	Spring
7	1	670550	Body
8	1	670553	Spool

Hosing Group Positioned Short Arm



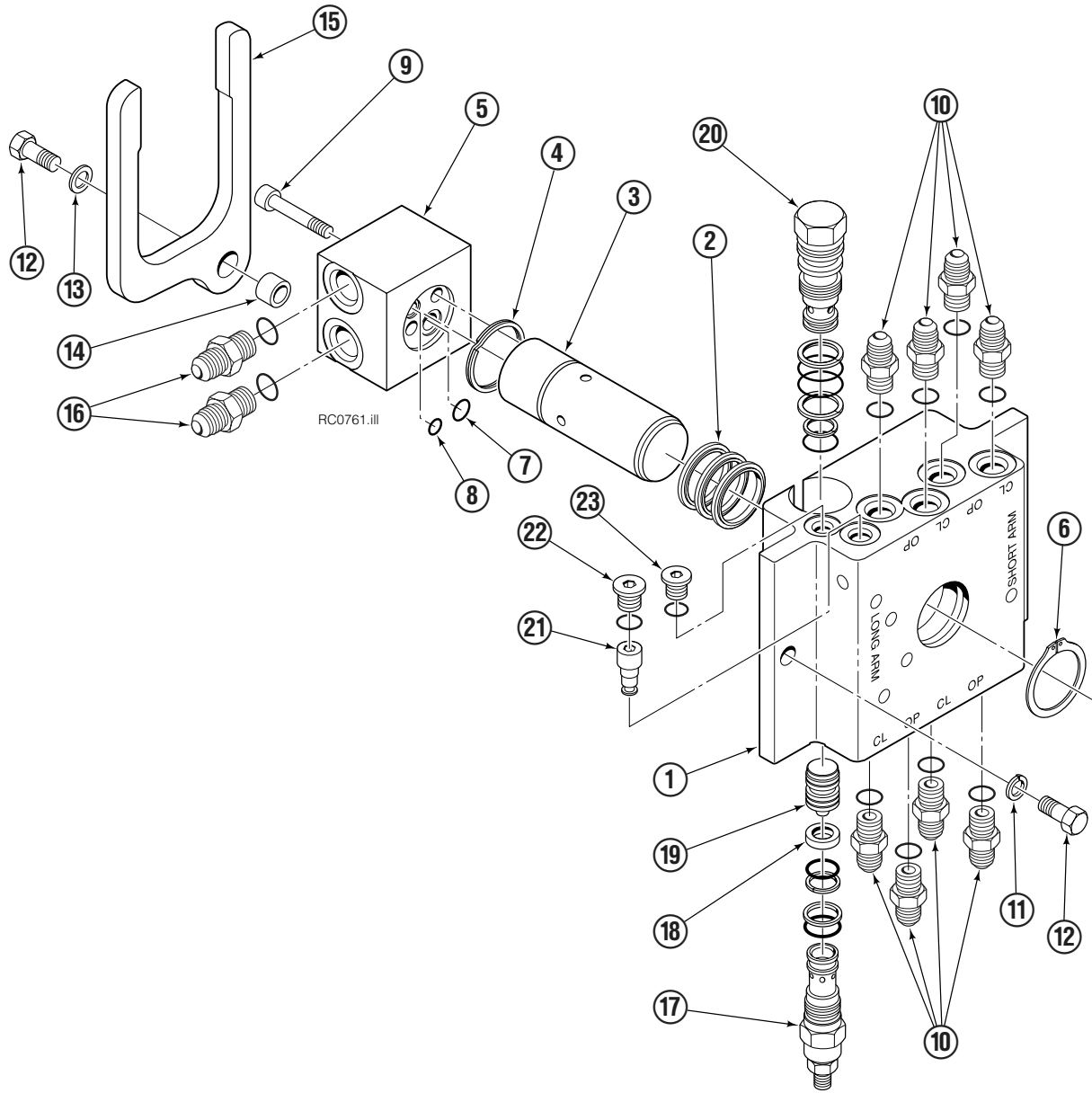
66G			
REF	QTY	PART NO.	DESCRIPTION
		6024027	Hose Group, 51 in. ■
1	4	675955	Hose, 32.5 in.
2	4	213989	Hose, 23.5 in.
3	1	▲	Revolving Connection

■ Maximum roll handling capacity.

▲ See Revolving Connection page for part number.

Reference: S-4192, S-4193.

Revolving Connection Split Long Arm / Fixed Frame

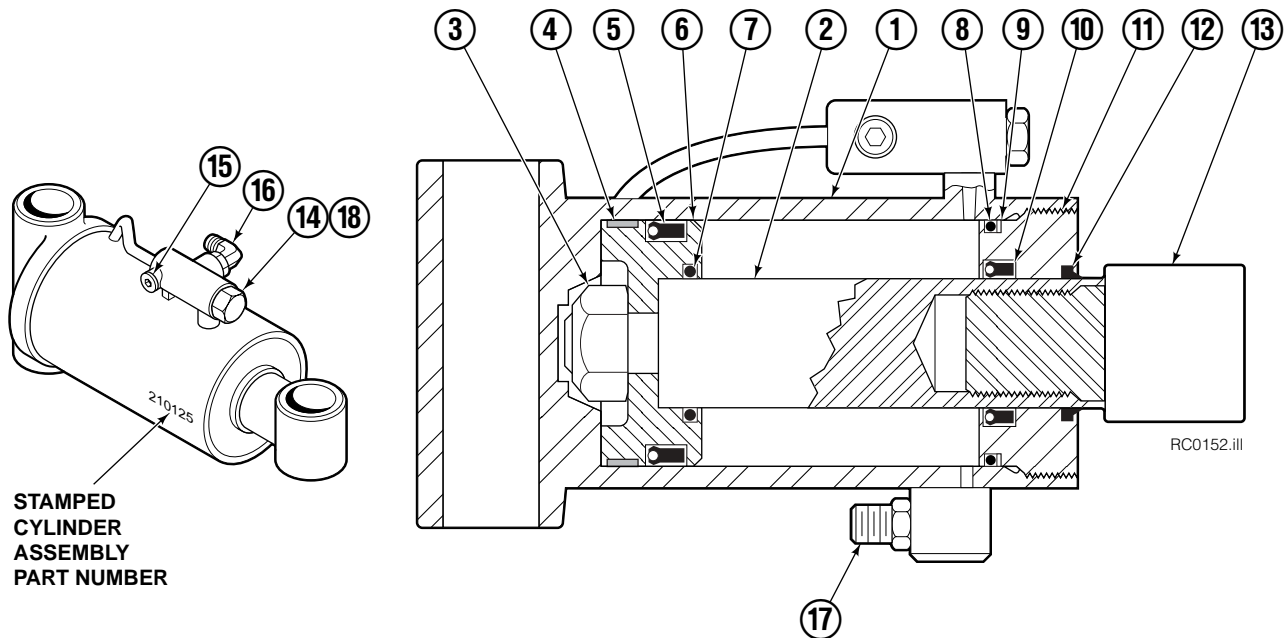


66G							
REF	QTY	PART NO.	DESCRIPTION	REF	QTY	PART NO.	DESCRIPTION
		6024039	Rev. Connection – Pos. Short Arm	12	3	215480	Capscrew, M10 x 25
1	1	6025059	Body	13	1	206322	Washer, M10
2	3	214649	Seal ♦	14	1	212725	Spacer
3	1	6025608	Shaft	15	1	211909	End Block Retainer
4	1	7341	Retaining Ring ♦	16	2	601377	Fitting, 8-8
5	1	227316	End Block	17	1	227331	Sequence Valve
6	1	3138	Retaining Ring ♦	18	1	227318	Quad Ring ♦
7	1	564448	O-ring ♦	19	1	227320	Spool
8	1	684587	O-ring ♦	20	1	6024293	Flow Divider Cartridge
9	2	766123	Capscrew, M8 x 50 ♦	21	1	220865	Shuttle Check
10	8	604511	Fitting, 6-6	22	1	609234	Fitting
11	3	681238	Lockwasher, M10	23	1	663694	Fitting

Reference: Revolving Connection Assembly 6025607.

♦ Included in Seal Kit 227665.

Long Arm Cylinder



STAMPED
CYLINDER
ASSEMBLY
PART NUMBER

66G			
REF	QTY	51 in. ■ PART NO.	DESCRIPTION
		6022427	Cylinder Assembly
1	1	4195-350	Shell
2	1	4130-335	Rod

■ Maximum roll handling capacity.

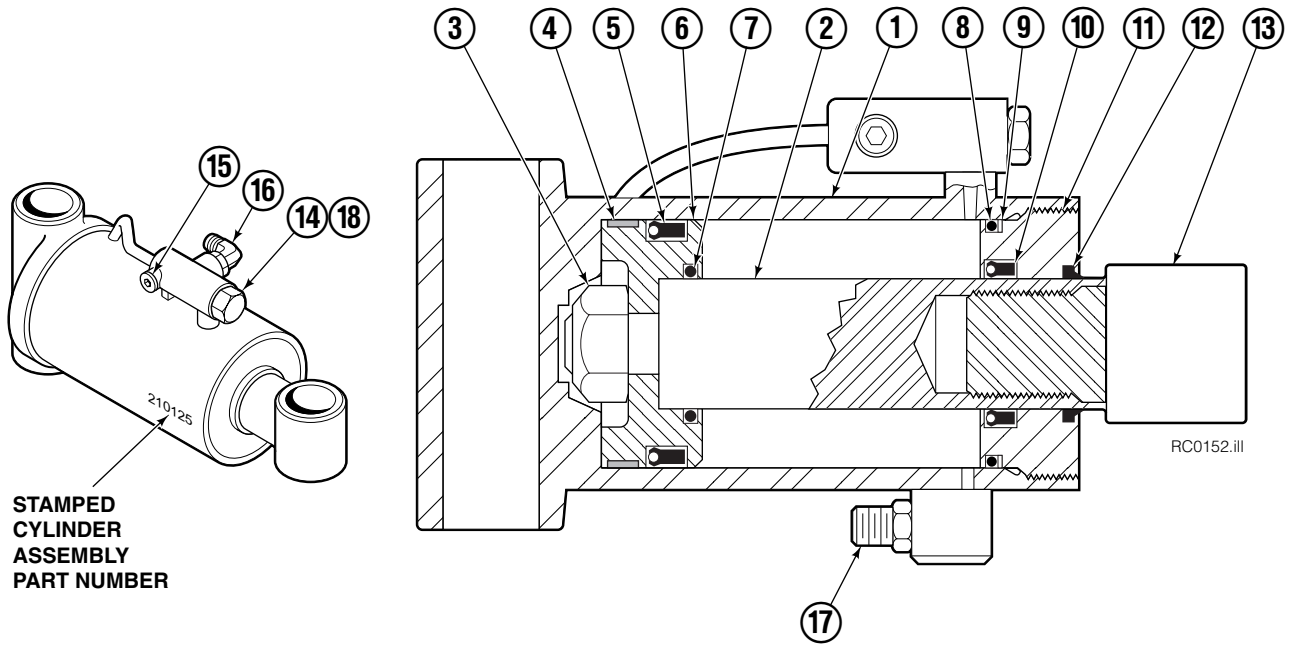
Common Parts

REF	QTY	PART NO.	DESCRIPTION	REF	QTY	PART NO.	DESCRIPTION
3	1	560997	Nut	12	1	564443	Wiper ▲
4	1	211295	Wear Ring ▲	13	1	209764	Rod End
5	1	564902	Seal ▲	14	1	659058	Check Valve
6	1	211292	Piston	15	1	609234	Fitting, 4
7	1	210087	O-Ring ▲	16	1	601676	Fitting, 6-6
8	1	564445	O-Ring ▲	17	1	604511	Fitting, 6-6
9	1	564446	Back-Up Ring ▲	18	1	667516	Check Valve Service Kit
10	1	564442	Seal ▲			210133	Cylinder Service Kit
11	1	209763	Retainer				

▲ Included in Service Kit 210133.

Reference: S-4195, LS-4454, S-4460.

Short Arm Cylinder



66G							
REF	QTY	51 in. ■	55 in. ■	60 in. ■	63 in. ■	72 in. ■	DESCRIPTION
		PART NO.	PART NO.	PART NO.	PART NO.	PART NO.	
		213639	213635	213641	213637	213643	Cylinder Assembly
1	1	4195-179	4195-189	4195-194	4195-195	4195-190	Shell
2	1	4130-163	4130-174	4130-200	4130-245	4130-335	Rod

■ Maximum roll handling capacity.

Common Parts

REF	QTY	PART NO.	DESCRIPTION	REF	QTY	PART NO.	DESCRIPTION
3	1	560997	Nut	12	1	564443	Wiper ▲
4	1	211295	Wear Ring ▲	13	1	209764	Rod End
5	1	564902	Seal ▲	14	1	659058	Check Valve
6	1	211292	Piston	15	1	609234	Fitting, 4
7	1	210087	O-Ring ▲	16	1	601676	Fitting, 6-6
8	1	564445	O-Ring ▲	17	1	604511	Fitting, 6-6
9	1	564446	Back-Up Ring ▲	18	1	667516	Check Valve Service Kit
10	1	564442	Seal ▲			210133	Cylinder Service Kit
11	1	209763	Retainer				

▲ Included in Service Kit 210133.

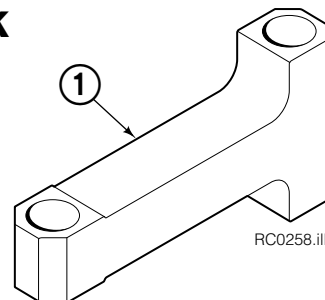
Reference: S-4195, LS-4454, S-4460.

Short Arm Link

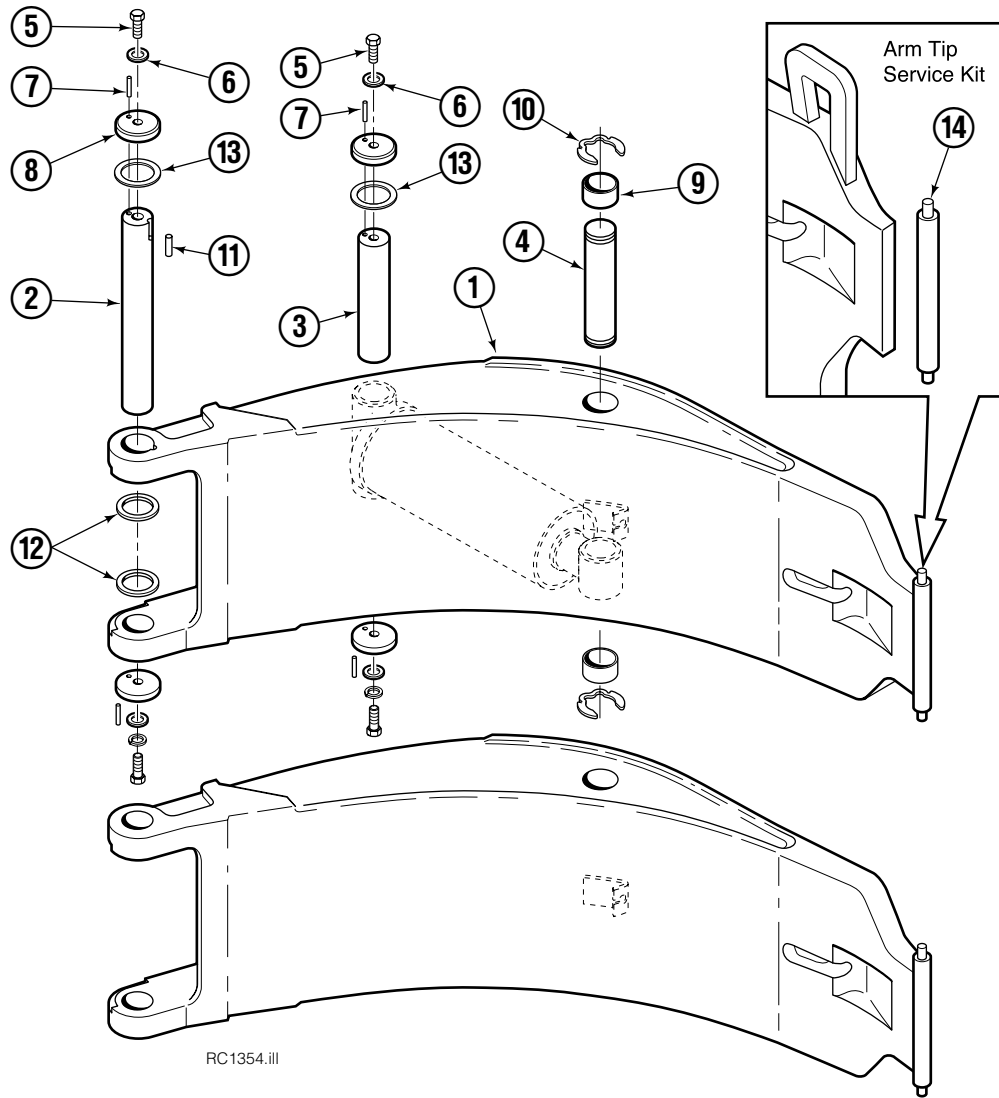
66G			
REF	QTY	PART NO.	DESCRIPTION
1	2	213954	Link – 51 in. ■
	2	213955	Link – 55 in. ■
	2	213956	Link – 60 in. ■
	2	213957	Link – 63 in. ■
	2	210145	Link – 72 in. ■

■ Maximum roll handling capacity.

Reference: S-4196, S-4203.



Split Long Arm



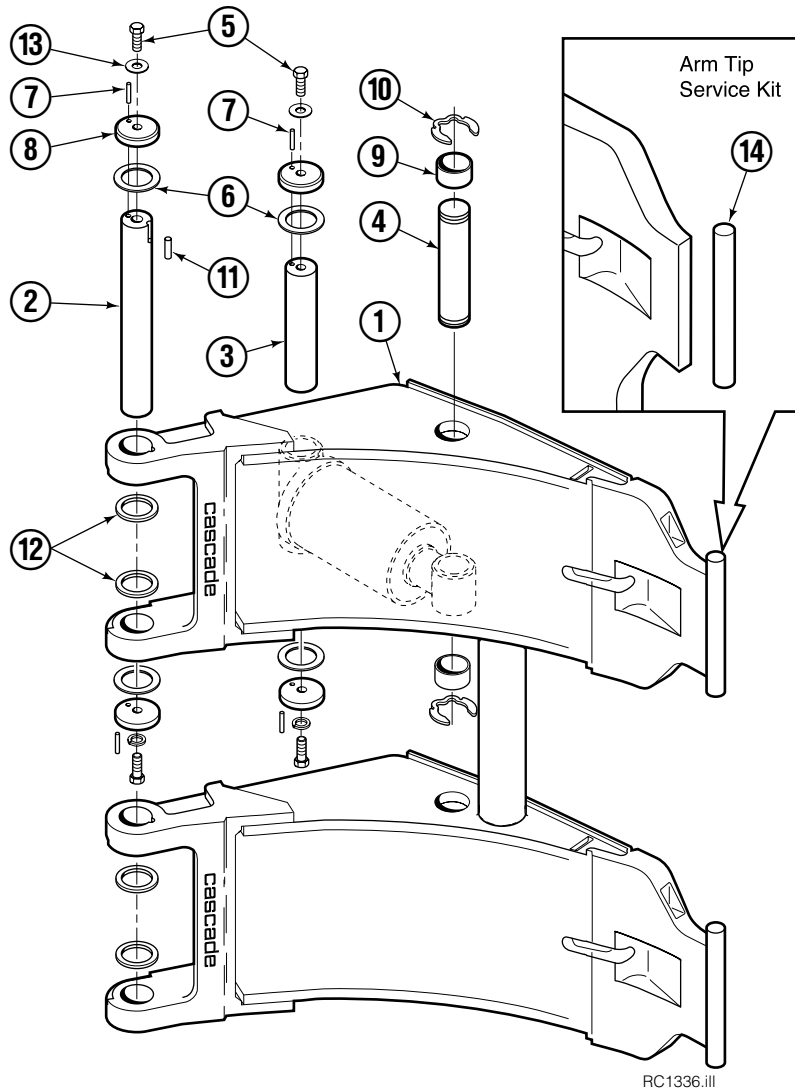
RC1354.ill

66G			
REF	QTY	51 in. ■	DESCRIPTION
		PART NO.	
		6023880	Arm Group
1	1	6023844	Long Arm

■ Maximum roll handling capacity.

REF	QTY	PART NO.	DESCRIPTION	REF	QTY	PART NO.	DESCRIPTION
2	2	6017336	Arm Pivot Pin	9	4	210080	Bearing
3	2	6023679	Cylinder Pivot Pin	10	4	209986	Retaining Ring
4	2	4175-150	Cylinder Rod Pivot Pin	11	2	212382	Dowel Pin, 8x16 mm
5	8	3007512	Cap screw, M12 x 25	12	16	209941	Shim - .062 in.
6	8	209019	Washer, M12	13	8	213029	Shim
7	8	209776	Roll Pin	14	1	212903	Arm Tip Service Kit
8	8	6017339	Cap				

Short Arm Group

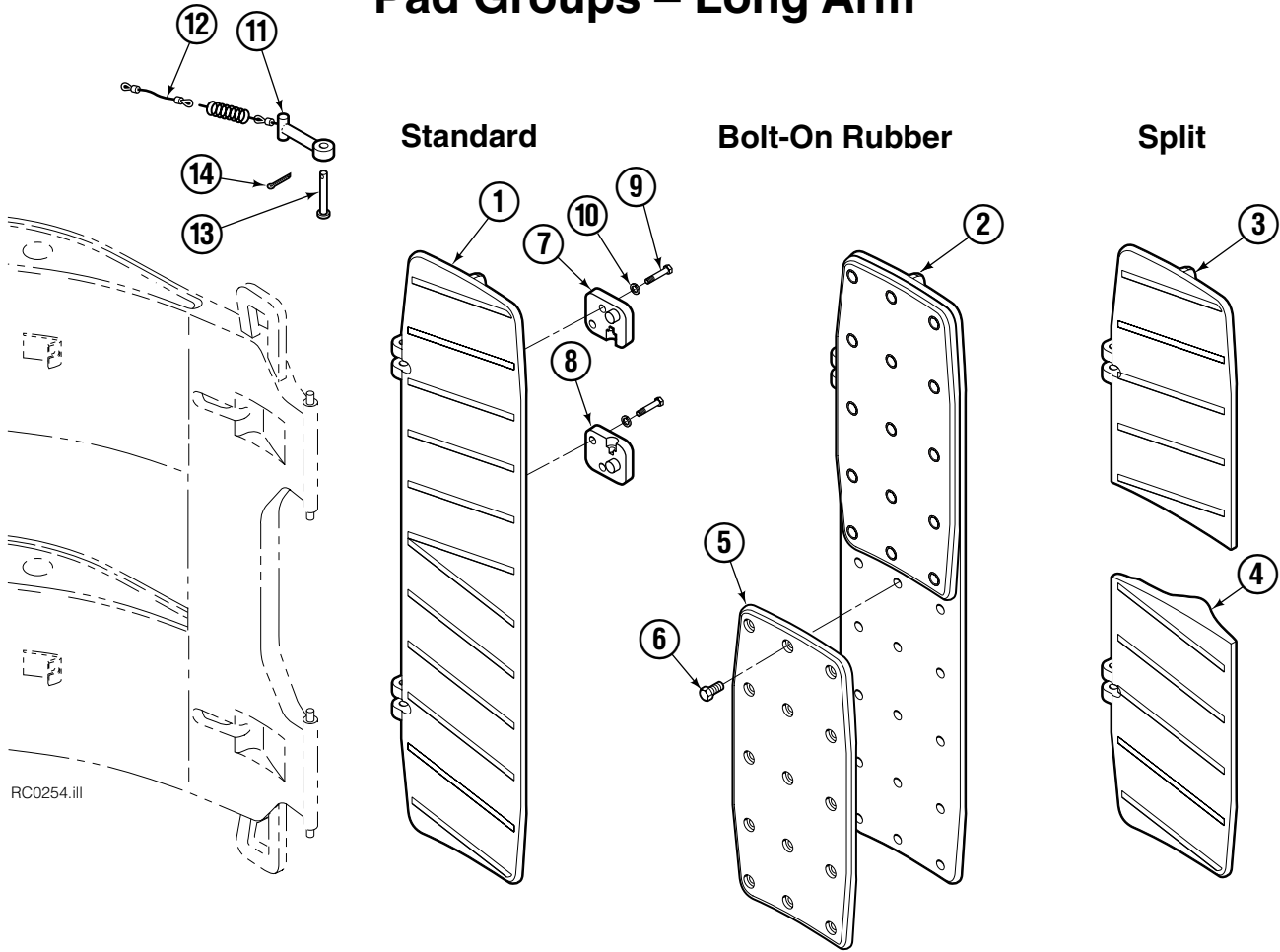


66G			
REF	QTY	51 in. ■	DESCRIPTION
		PART NO.	
		6022305	Short Arm Group
1	1	6022306	Short Arm

■ Maximum roll handling capacity.

REF	QTY	PART NO.	DESCRIPTION	REF	QTY	PART NO.	DESCRIPTION
2	2	6017336	Arm Pivot Pin	9	4	210080	Bearing
3	2	6023679	Cylinder Pivot Pin	10	4	209986	Retaining Ring
4	2	4175-150	Cylinder Rod Pivot Pin	11	2	212382	Dowel Pin, 8x16 mm
5	8	3007512	Capscrew, M12 x 25	12	16	209941	Shim - .062 in.
6	8	213029	Shim	13	8	209019	Washer, M12
7	8	209776	Dowel Pin	14	1	212902	Arm Tip Service Kit
8	8	6017339	Cap				

Pad Groups – Long Arm



RC0254.iii

66G							DESCRIPTION
REF	QTY	51 in. ■ PART NO.	55 in. ■ PART NO.	60 in. ■ PART NO.	63 in. ■ PART NO.	72 in. ■ PART NO.	
		209876 ●	209922 ●	212254 ●	209882 ●	209887 ●	Standard Pad Group
		—	—	209885 ◆	—	—	Bolt-On Rubber Pad Group
		209878 ★	209924★	209884 ★	209884 ★	209889 ★	Split Pad Group
1	1	209893	209893	212284	209895	209898	Pad, Standard
2	1	—	—	212292	—	—	Pad, Bolt-On Rubber
3	1	213644	213644	213652	213652	213658	Pad, Split – RH ▲
4	1	213645	213645	213653	213653	213659	Pad, Split – LH ▲
5	2	—	—	209921	—	—	Bolt-On Rubber
6	30	—	—	213543	—	—	Capscrew, M8

■ Maximum roll handling capacity.

● Pad Group includes items 1 & 7–14.

◆ Pad Group includes items 2 & 5–14.

★ Pad Group includes items 3, 4 & 7–14.

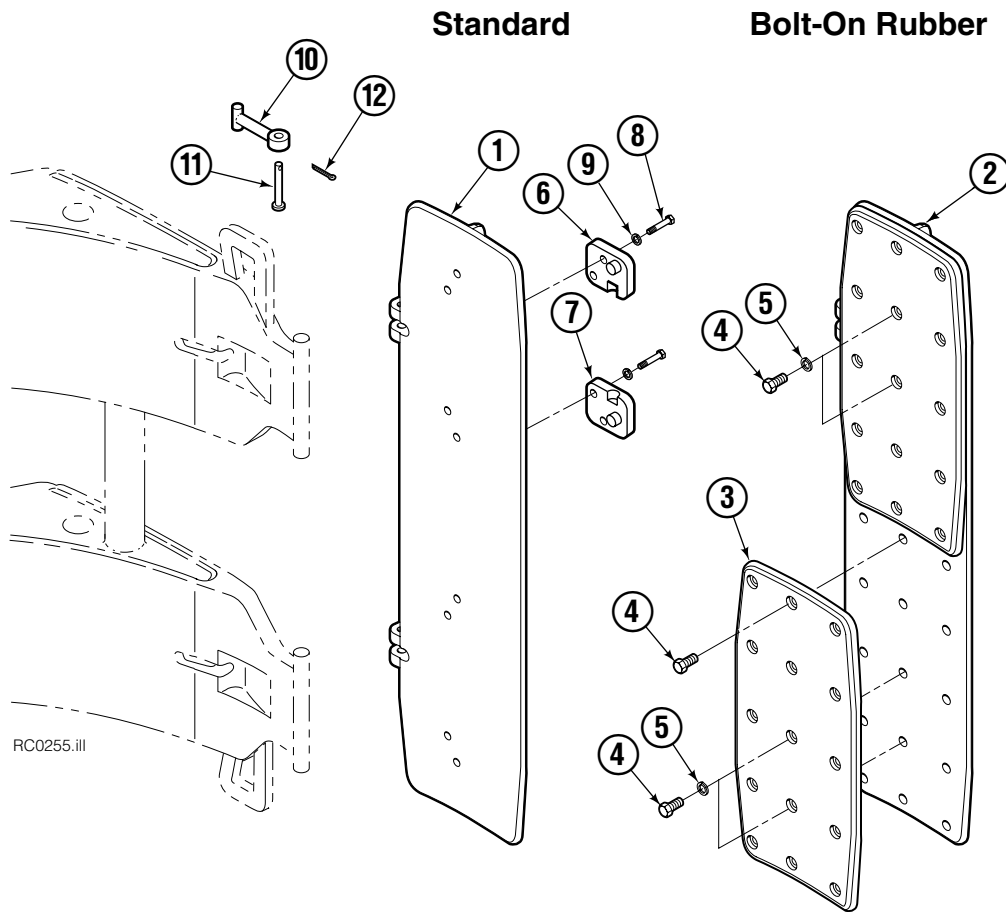
Common Parts

REF	QTY	PART NO.	DESCRIPTION	REF	QTY	PART NO.	DESCRIPTION
		212934	Common Parts Group – Long Arm		2	4182-040	Cable – 51 in. ■
7	2	211997	Retainer – RH ▲	12	2	4182-080	Cable – 55 in. ■
8	2	211998	Retainer – LH ▲		2	4182-110	Cable – 60 in. ■
9	8	767810	Capscrew, M12		2	4182-110	Cable – 63 in. ■
10	8	681473	Lockwasher, M12		2	4182-245	Cable – 72 in. ■
11	2	209916	Link Assembly		13	2	674265
				14	2	6525	Cotter Pin
						212911	Pad Retainer Service Kit (items 7–10)

▲ Driver's view, clamp in horizontal position, Long Arm up.

Reference: S-4176, S-4177.

Pad Groups – Short Arm



60G			
REF	QTY	51 in. ■	DESCRIPTION
		PART NO.	
		209877	Standard Pad Group
1	1	209893	Pad, Standard

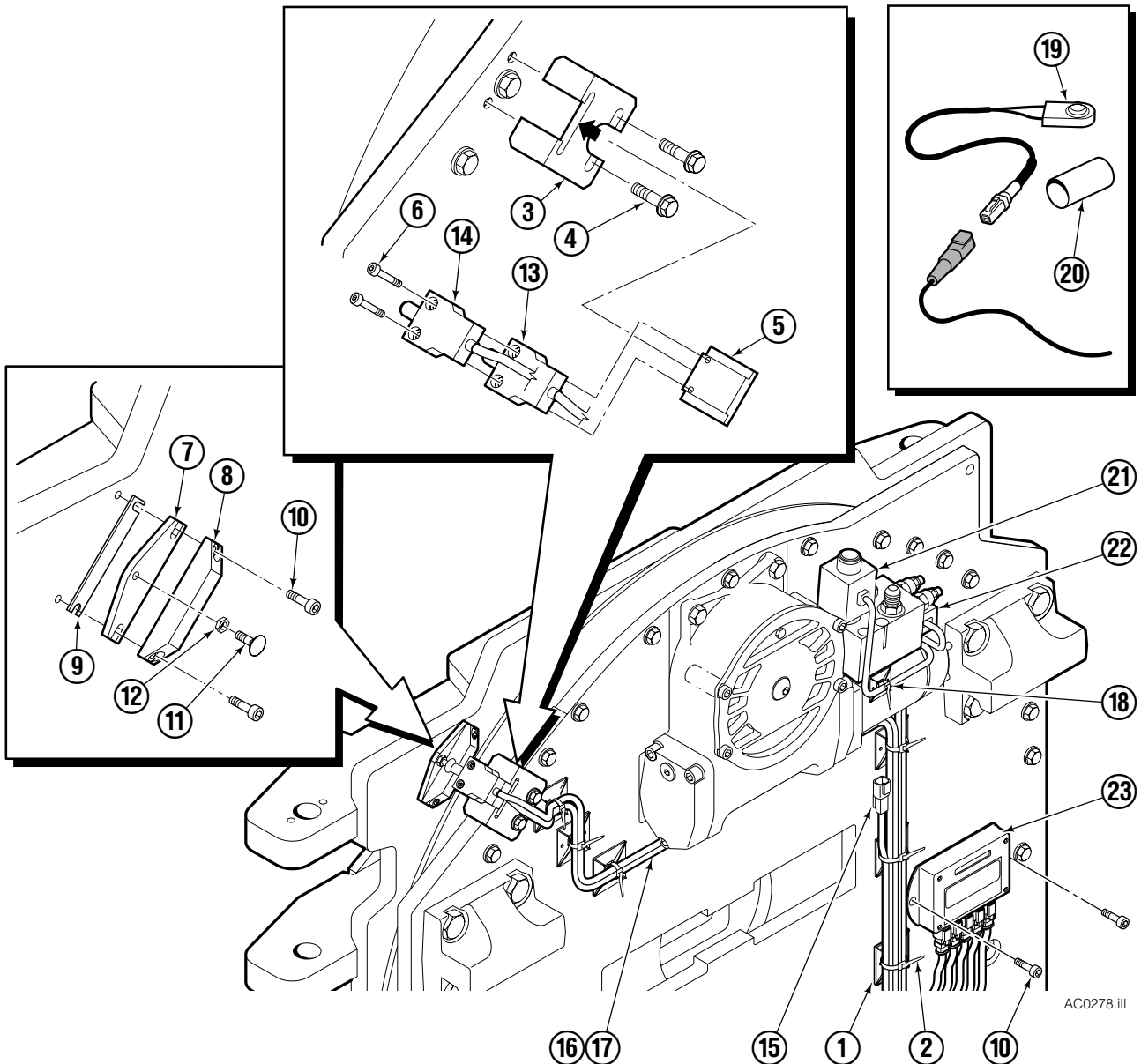
■ Maximum roll handling capacity.

Common Parts

REF	QTY	PART NO.	DESCRIPTION	REF	QTY	PART NO.	DESCRIPTION
		212935	Common Parts Group – Short Arm	9	8	681473	Lockwasher, M12
6	2	209904	Retainer, R.H. ▲	10	2	209909	Link
7	2	209905	Retainer, L.H. ▲	11	2	674265	Clevis Pin
8	8	763021	Capscrew, M12	12	2	6525	Cotter Pin

▲ Driver's view, clamp in horizontal position, Short Arm up.
Reference: S-4176, S-4177.

Rotational Control Package



AC0278.iii

66G

REF	QTY	PART NO.	DESCRIPTION	REF	QTY	PART NO.	DESCRIPTION
		6001010	Rotational Control Group 1 ●	12	3	765718	Nut
		6001012	Rotational Control Group 2 ■	13	1	222024	Switch/Cable Assembly
1	7	6002451	Cable Tie Anchor	14	1	222256	Switch/Cable Assembly
2	9	6002479	Cable Tie	15	1	222023	Power Cable
3	1	222021	Switch Mounting Bracket	16	1	228720	Ext. Cable Assembly
4	2	6002668	Flange Screw	17	1	228721	Ext. Cable Assembly
5	1	222020	Switch Mounting Plate	18	2	6002501	Cable Tie Anchor
6	2	768784	Capscrew	19	1	6001663	Switch Assy
7	3	228700	Plate Stop	20	1	6001641	Shrink Tubing
8	3	228701	Block Decal	21	1	6003161	Solenoid/Cable Assembly
9	3	6009228	Shim	22	1	6003169	Solenoid/Cable Assembly
10	8	761170	Capscrew	23	1	227888	Relay Enclosure Assembly
11	3	228690	Carriage Bolt				

- Includes items 1-18.
- Includes items 19-20.



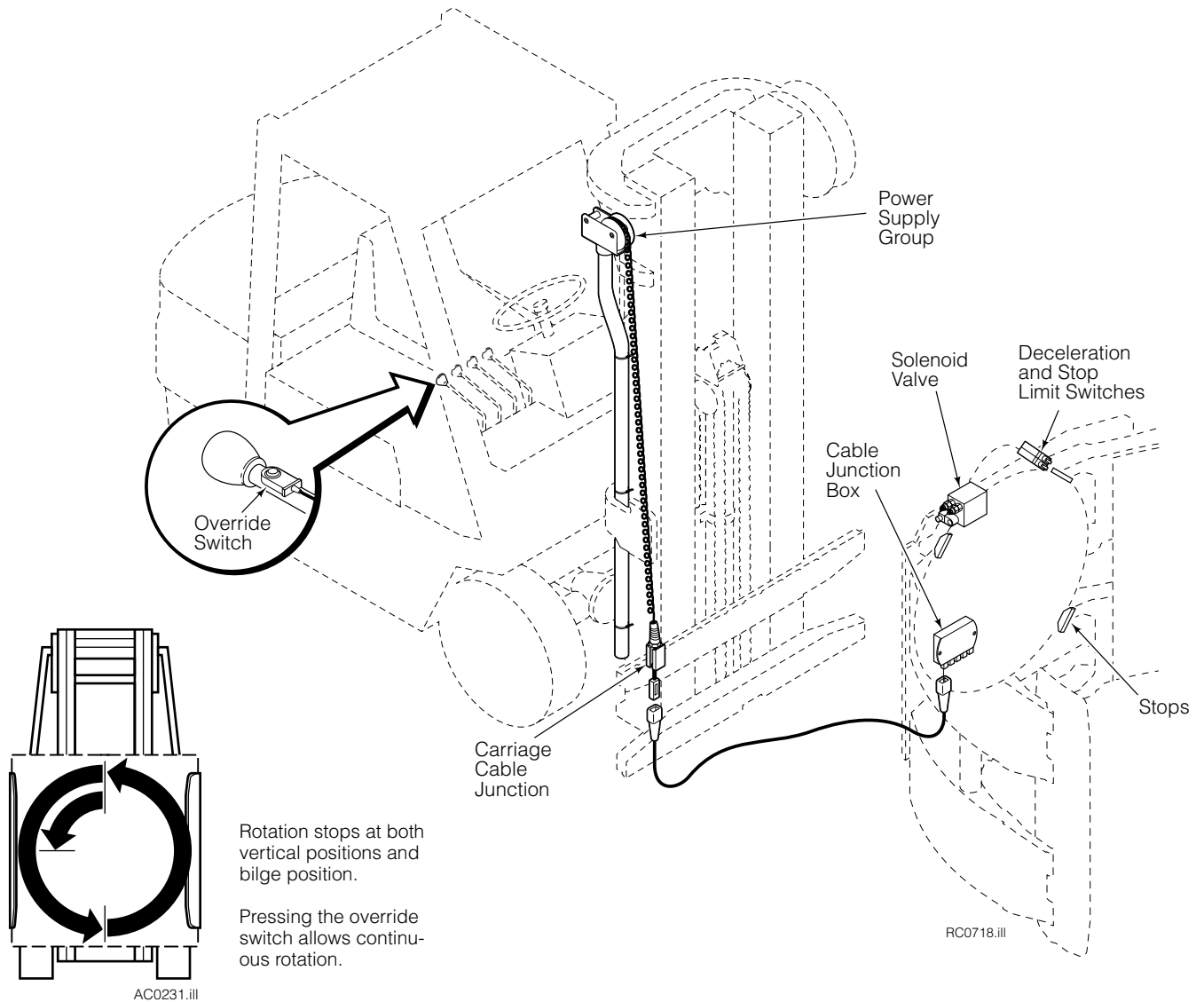
Installation Instructions

Electronic Rotational Control Group

This manual provides installation instructions for Cascade Rotation Control Kits. Rotational Control provides accurate stops during rotation to position the attachment arms at true vertical or bilge position to reduce product damage of misclamped loads. A normally closed switch mounted on the

truck rotate control handle overrides the stop positions for continuous rotation. An electrical supply circuit such as Cascade's Power Supply (recommended) or Cable Reel is required to provide an electrical connection between the attachment and truck control handle switch.

Major components are shown.



cascade[®]
corporation

For Technical Support . . .

Call: 1-800-227-2233

OR

Write: Cascade Corporation, P.O. Box 20187, Portland, OR 97294

To Order Parts . . .

Call: 1-888-227-2233

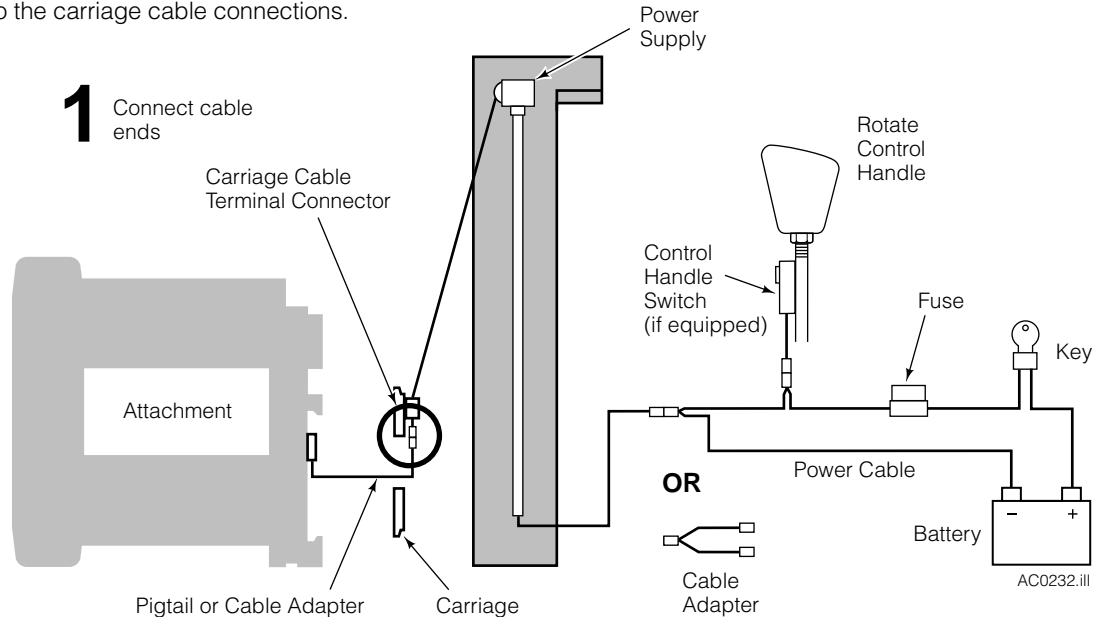
OR

Write: Cascade Corporation, 2501 Sheridan Ave., Springfield, OH 45505

Cable Installation

- 1 Connect the power cable from the relay enclosure on the back of the attachment to the power supply cable end at the truck carriage.

NOTE: This installation shows connection to Cascade's Power Supply Kit 228719 or 6001137 which include all components for electrical supply from the truck battery and control handle to the carriage cable connections.



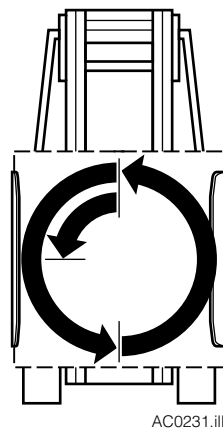
Operation and Adjustment

- 1 Test the installation before putting the truck in service. When rotating, attachment travel should stop at the vertical and bilge handling positions. Wait 3 seconds to rotate after stopping **OR** press the rotate override button to continue rotating.

- If rotation **stops** at vertical or the bilge position, continue with step 2.
- If rotation **does not stop** at the vertical or bilge positions:
 - A Inspect the wiring installation. Look for loose connections or pinched cables.
 - B The limit switch end rollers are not fully engaging the deceleration ramp and stop capscrew at the vertical or bilge position. Adjust the limit switch actuators to engage the ramp and stop capscrew. The ramp and stop can also be adjusted for precision of the stop position. The stop capscrew height is also adjustable.

- 2 To continue rotation, wait 3 seconds after stopping or the rotate override button must be pressed to continue rotation.

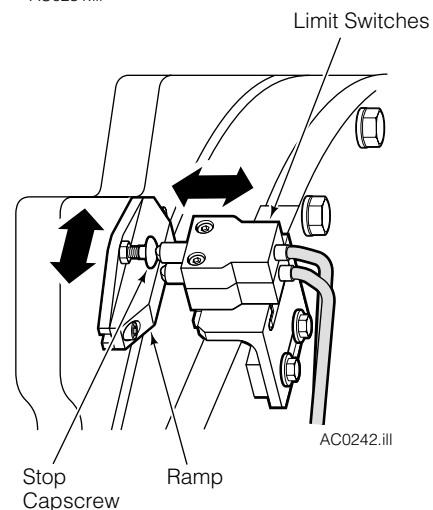
To rotate without stopping, press the override button.



Rotation stops at both vertical positions and at the bilge position.

Pressing the override switch allows continuous rotation.

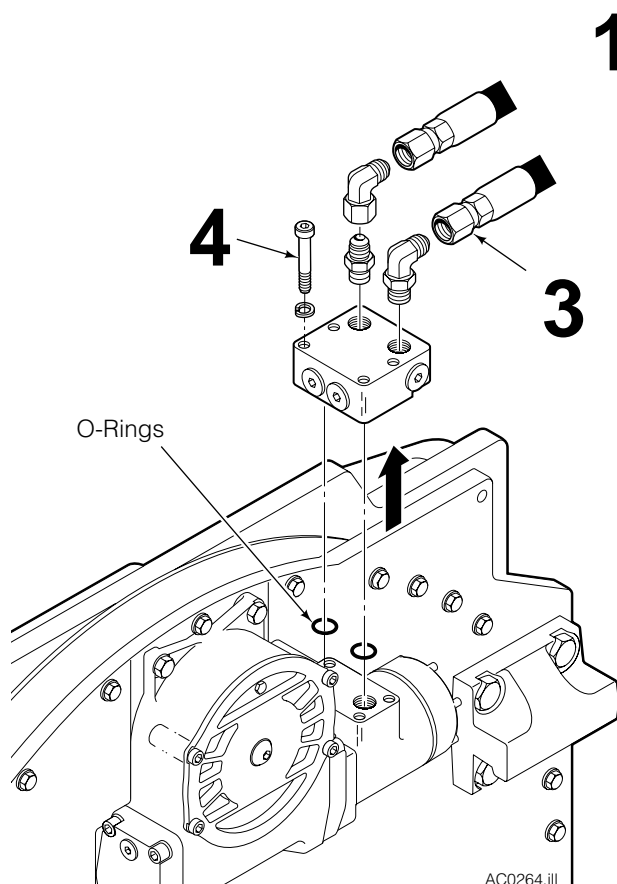
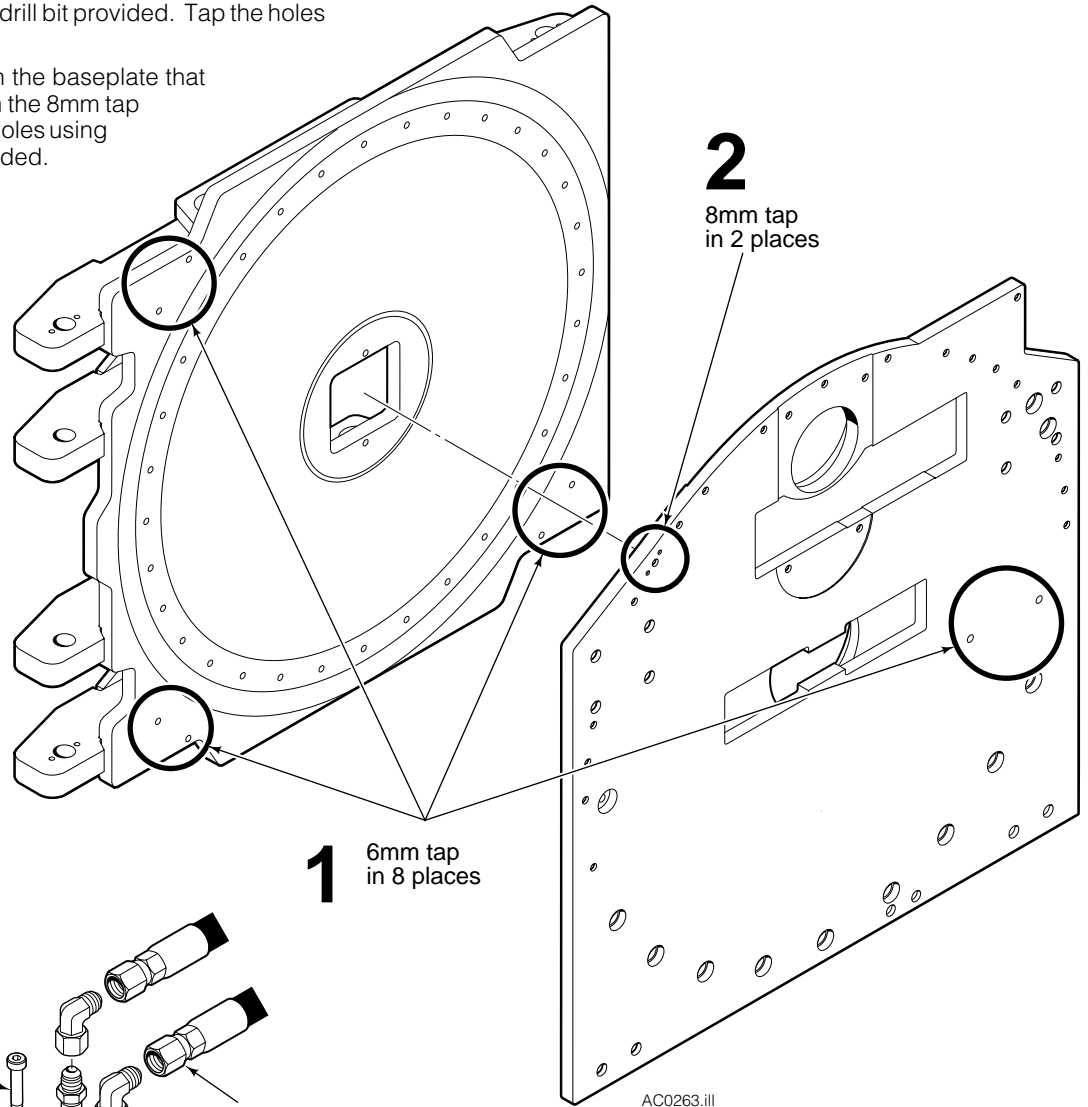
Wait 3 seconds or press override button to continue rotating.



Retrofit Installation

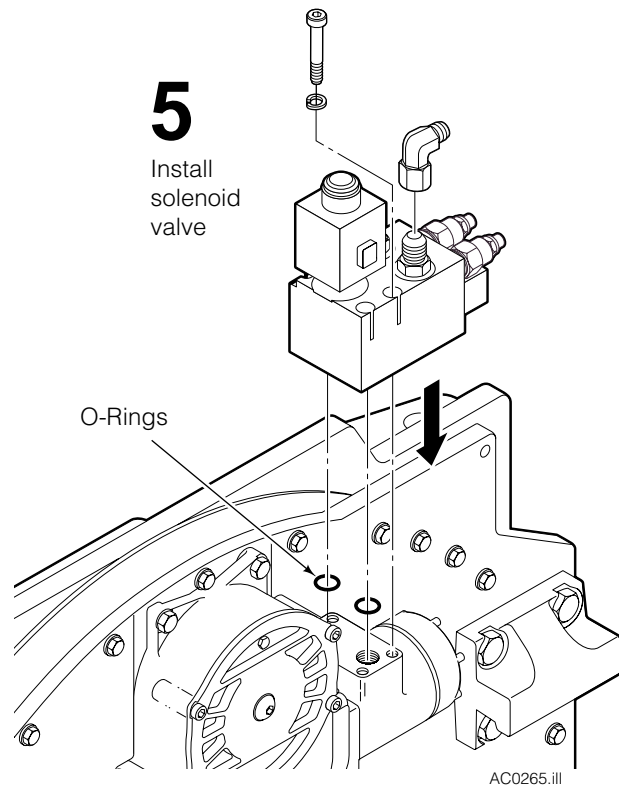
Rotational control is also available as a field installable kit for attachments that have predrilled faceplates and baseplates.

- 1** Locate the eight holes that need to be tapped with the 6mm tap provided. Six holes are located in the faceplate and two holes are located in the baseplate. Drill out the holes using the 5.3mm drill bit provided. Tap the holes using the 6mm tap.
- 2** Locate the two holes in the baseplate that need to be tapped with the 8mm tap provided. Drill out the holes using the 7.3mm drill bit provided. Tap the holes using the 8mm tap.

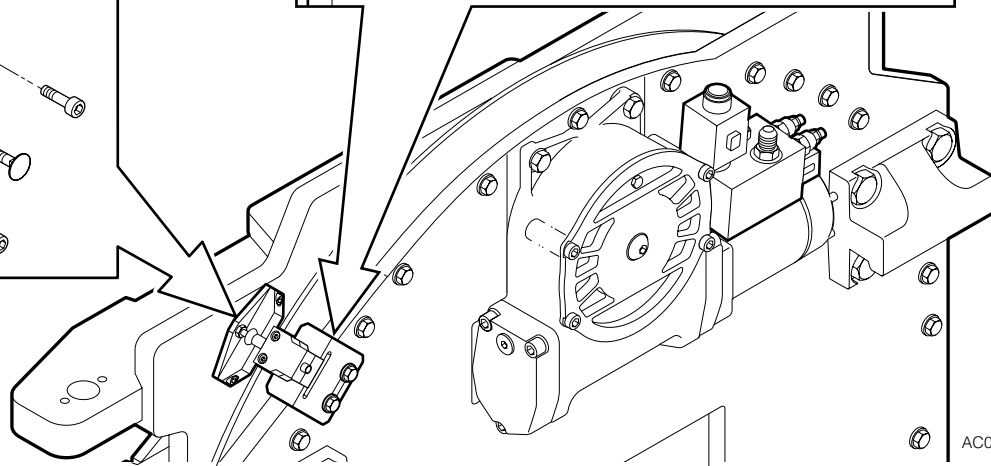
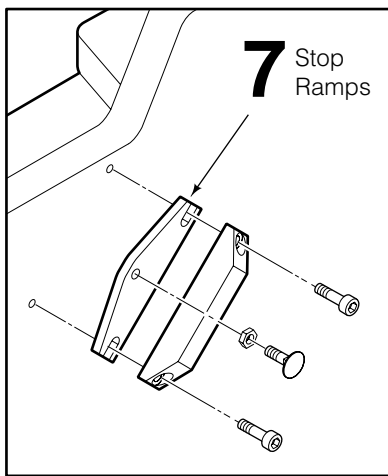
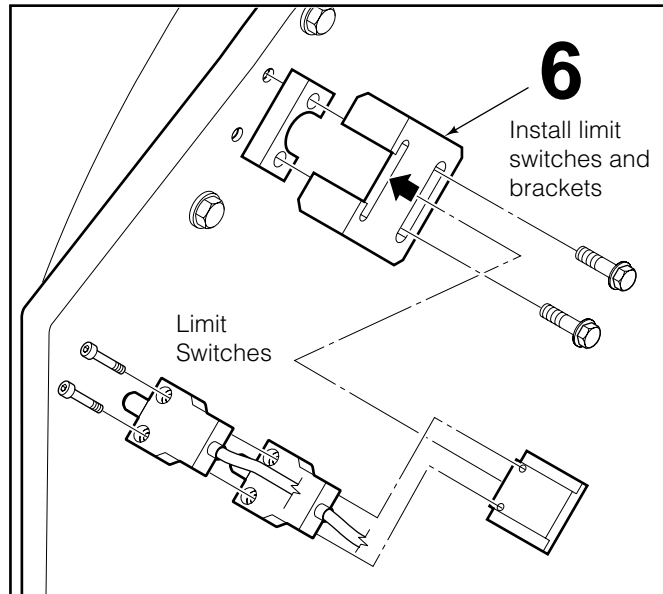


- 3** Disconnect hydraulic hoses to the drive group. Tag the hoses for reassembly.
- 4** Remove the four cap screws fastening the check valve to the drive group. Keep track of the two O-rings between the check valve and drive motor.

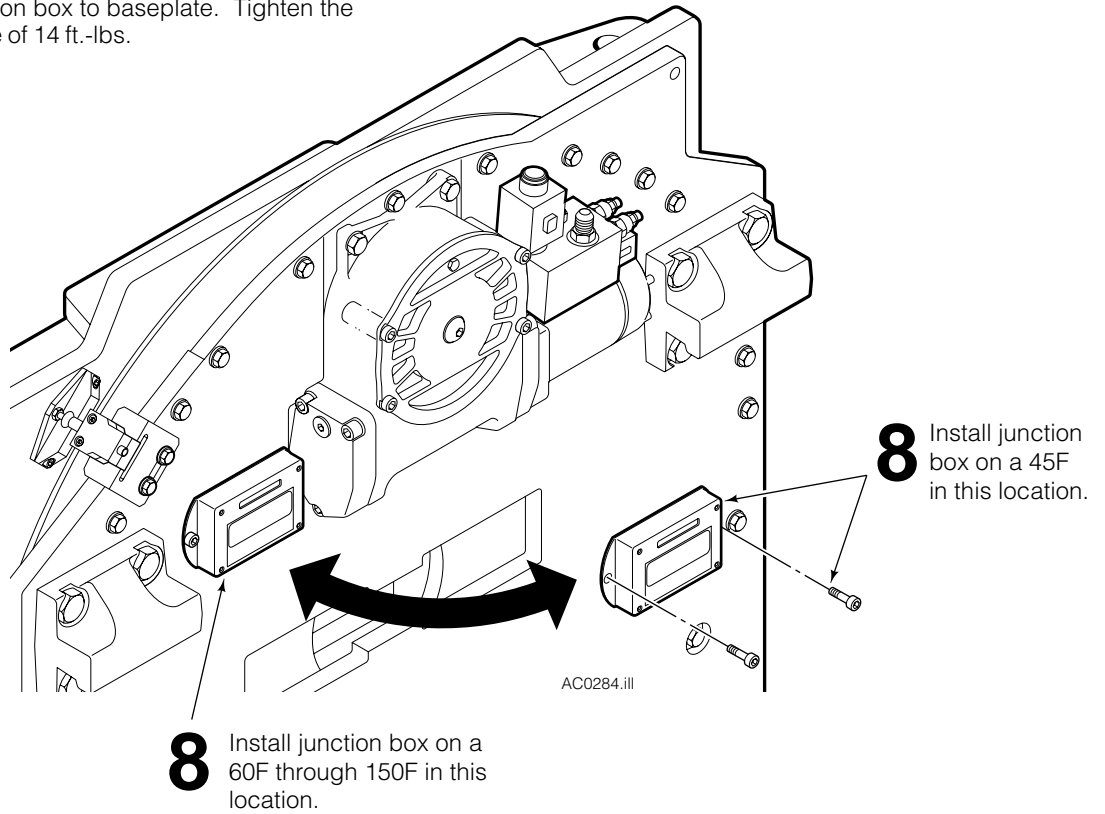
- 5** Install the new solenoid valve to the drive group. Place the two O-rings between the solenoid valve and drive motor and install the four capscrews. Tighten the capscrews to a torque of 20 ft.-lbs.



- 6** Install the limit switches and brackets to the baseplate. Tighten the baseplate bracket capscrews to a torque of 14 ft.-lbs.
- 7** Install the stop ramps to the faceplate. Tighten the stop capscrews to a torque of 3 ft.-lbs.

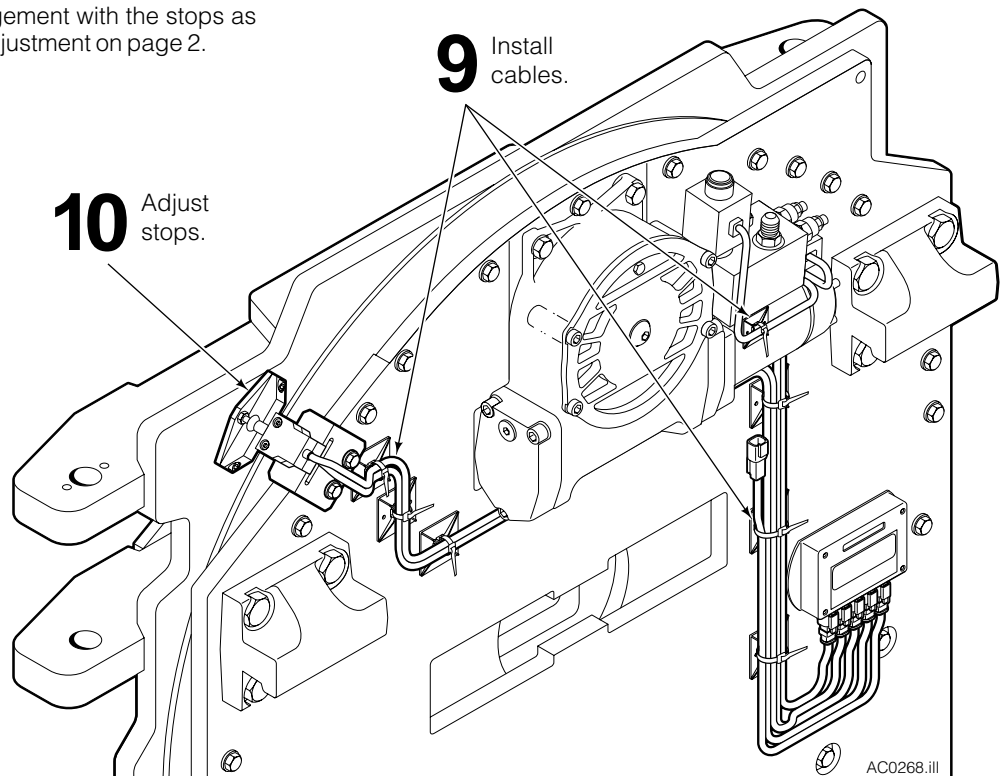


- 8** Install the cable junction box to baseplate. Tighten the capscrews to a torque of 14 ft.-lbs.



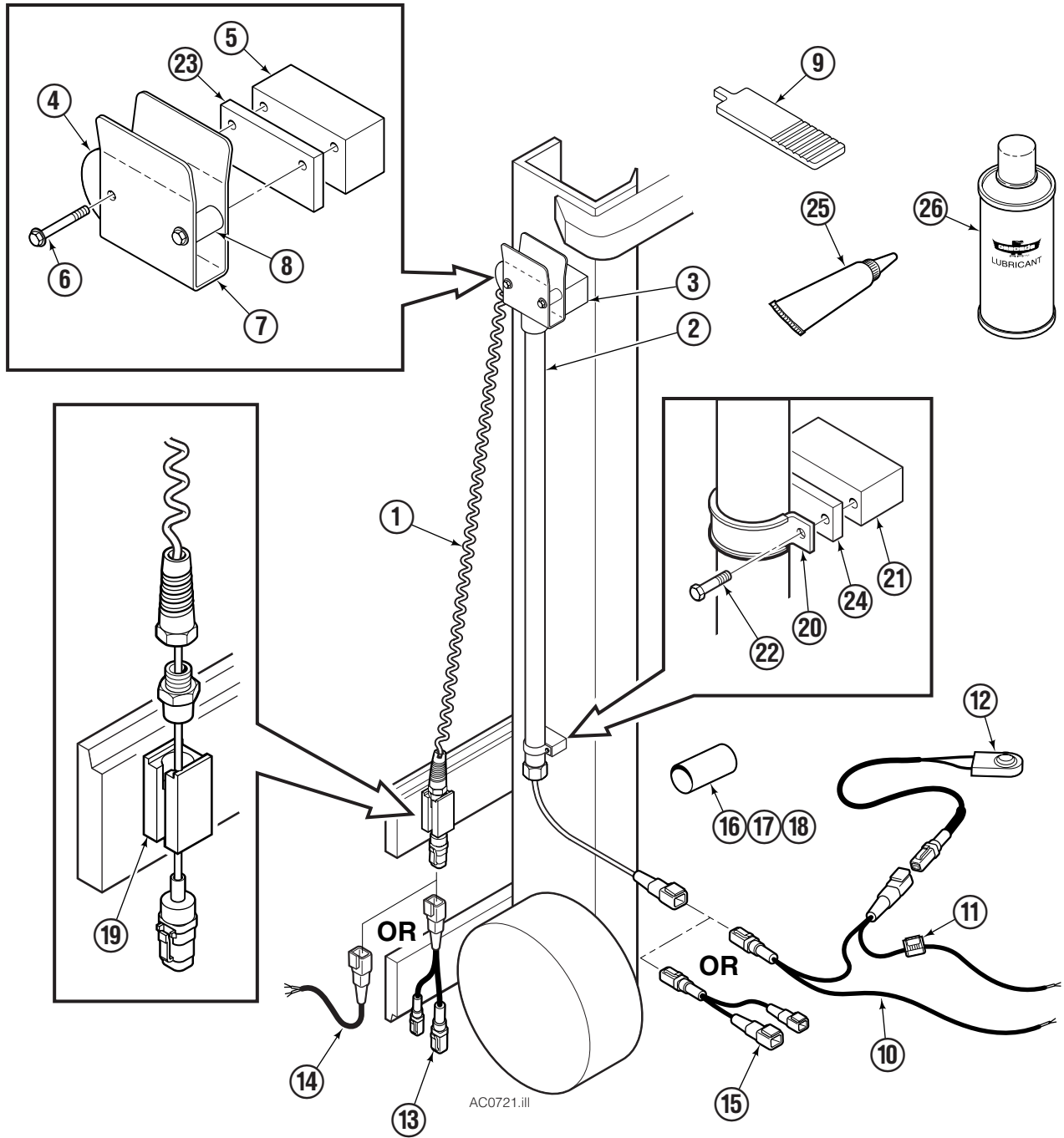
- 9** Install the cables. Use the adhesive blocks and wire ties to secure the wiring.

- 10** Adjust the limit switch engagement with the stops as described in Operation and Adjustment on page 2.



Power Supply/Communication Groups

Maximum Mast Fork Height – 320 in.



Power Supply/Communication Groups

Maximum Mast Fork Height – 320 in.

Power Supply Group	Maximum Mast ^① Fork Height (in.)	Conductors ^② (No. @ AWG)	Supply Application
6016846	320	2 @ 20	Generic – Switched
6016847	320	2 @ 20	ERC – Unswitched
6003598	320	4 @ 26	AFC – Unswitched
6030344	320	2 @ 20 & 4 @ 26	AFC & ERC – Unswitched

① Simplex, dual or triple masts only.

② Do not use 26 AWG for high voltage or high current applications.
(20 AWG rated @ 5A, 26 AWG rated @ .25A)

AFC: Adaptive Force Control

ERC: Electronic Force Control

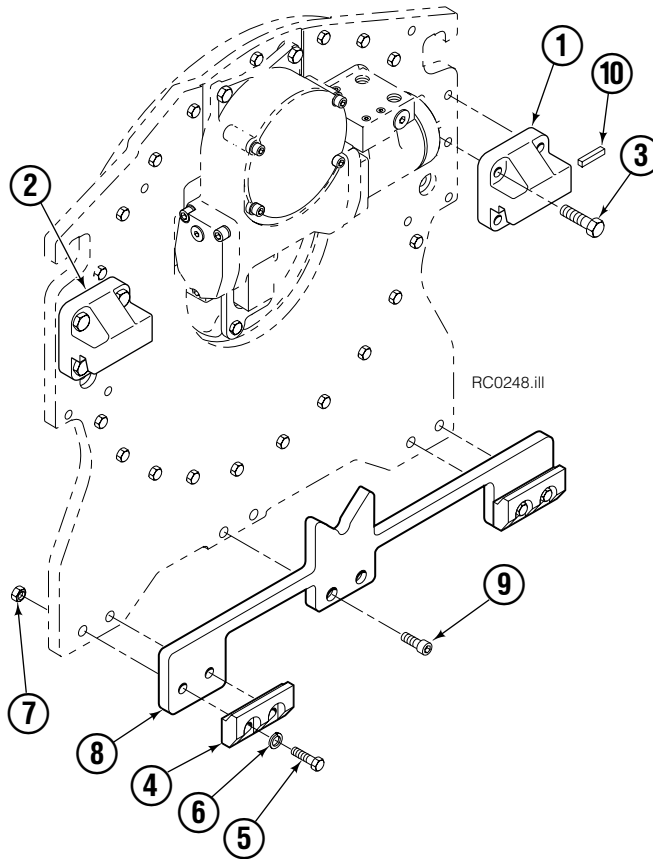
REF	QTY	PART NO.	PART NO.	PART NO.	PART NO.	DESCRIPTION
		6016846	6016847	6003598	6030344	Power Supply Group
1	1	6016849	6016849	6003600	6015681	Cable Assembly
2	1	6003601	6003601	223684	6003601	Conduit
3	1	223678	223678	223678	223678	Sheave Assembly ●
4	1	223680	223680	223680	223680	Sheave
5	1	228679	228679	228679	228679	Spacer Block
6	2	228704	228704	228704	228704	Capscrew, M8 x 45
7	1	223679	223679	223679	223679	Bracket
8	2	223681	223681	223681	223681	Bearing
9	1	6027117	6027117	6027117	6027117	Alignment Tool ◆
10	1	6001647	6001647	—	6001647	Wire Harness
11	1	219414	219414	—	219414	Fuse, ATC-10
12	1	6001637	—	—	—	Switch
13	1	224459	—	—	224459	Pigtail
14	1	—	—	—	6001544	Cable Adapter
15	1	—	—	—	6001545	Cable Adapter
16	1	6001641	—	—	—	Shrink Tube, 50 ID x 75 mm
17	1	6026933	—	—	—	Shrink Tube, 38 ID x 75 mm
18	1	6026934	—	—	—	Shrink Tube, 50 ID x 75 mm
19	1	223698	223698	223698	223698	Anchor
20	1	6001442	6001442	6001442	6001442	Clamp
21	1	6001452	6001452	6001452	6001452	Spacer Block
22	1	680218	680218	680218	680218	Capscrew, M6 x 12
23	2	6026756	6026756	6026756	6026756	Spacer Plate ◆
24	2	6026763	6026763	6026763	6026763	Spacer Plate ◆
25	■	222267	222267	222267	222267	Adhesive
26	■	6014684	6014684	6014684	6014684	Dry Film Lubricant

● Includes items 4 through 8.

■ Not included in Power Supply/Communication Group.

◆ Included in Spacer Kit 6030223.

Mounting Group



Class III, 2°			
REF	QTY	PART NO.	DESCRIPTION
		209926	Mounting Group
1	1	209932	Upper Hook – RH
2	1	209933	Upper Hook – LH
3	4	779010	Capscrew, M16 x 35
4	2	675969	Lower Hook
5	4	678997	Capscrew, M16 x 70
6	4	667225	Washer, .625 in. I.D.
7	4	781534	Nut, M16
8	1	209936	Spacer
9	2	213771	Capscrew, M12 x 25
10	1	669344	Stop Kit

Do you have questions you need answered right now? Call your nearest Cascade Parts Department. Visit us online at www.cascorp.com

Cascade Corporation
2501 Sheridan Avenue
Springfield, OH 45505
Tel: 888-CASCADE (227-2233)
FAX: 888-329-0234

Cascade Canada Inc.
5570 Timberlea Blvd.
Mississauga, Ontario
Canada L4W-4M6
Tel: 905-629-7777
FAX: 905-629-7785

Cascade GmbH
D-41199 Monchengladbach
Klosterhofweg 52
Germany
Tel: 49-216-668230
FAX: 49-216-6682323

Cascade Finland
Albert Petreliuksenkatu 3
01370 Vantaa
Finland
Tel: 358-9-836-1925
FAX: 358-9-836-1935

**Cascade N.V.
European Headquarters**
P.O. Box 3009
1300 El Almere
Damsluisweg 56
1332 ED Almere
The Netherlands
Tel: 31-36-5492911
FAX: 31-36-5492964

**Cascade N.V.
Benelux Sales and Service**
P.O. Box 3009
1300 El Almere
Damsluisweg 56
1332 ED Almere
The Netherlands
Tel: 31-36-5492950
FAX: 31-36-5492974

Cascade (UK) Ltd.
15, Orgreave Crescent
Dore House Industrial Estate
Handsworth
Sheffield S13 9NQ
England
Tel: 742-697524
FAX: 742-695121

Cascade Scandinavia AB
Box 124
Hammarvägen 10
567 23 Vaggeryd
Sweden
Tel: 42-0-393-36950
FAX: 46-0-393-36959

Cascade Norway
Østerliveien 37A
1153 Oslo
Norway
Tel: 47-22-743160
FAX: 47-22-743157

Cascade France S.A.R.L.
1D Rue De Charaintru
BP 18, 91360 Epinay-Sur-Orge
Morangis Cedex, France
Tel: 33-1- 64547500
FAX: 33-1-64547501

Cascade Hispania S.A.
Carrer 5 Sector C
Zona Franca Duanera
Poligono de la Zon Franca
08040 Barcelona, Spain
Office No. 256
Tel: 93-264-07-30
FAX: 93-264-07-31

Cascade Japan Ltd.
5-5-41,
Torikai Kami
Settsu, Osaka
Japan, 566
Tel: 81-726-53-3490
FAX: 81-726-53-3497

Cascade Korea
108B, Namdong Ind Complex
658-3 Gojan-Dong
Namdong-Gu
Inchon, 405-310 Korea
Tel: 82-32-821-2051
FAX: 82-32-821-2055

Cascade Australia
1445 Ipswich Road
Rocklea, QLD 4106
Australia
Tel: 1-800227-223
FAX: (07) 3373-7333

Cascade New Zealand
15 Ra Ora Drive
East Tamaki, Auckland
New Zealand
Tel: 9-273-9136
FAX: 9-273-9137

Cascade (Africa) Pty. Ltd.
P.O. Box 625, Isando 1600
60A Steel Road
Sparton, Kempton Park
South Africa
Tel: 27-11-975-9240
FAX: 27-11-394-1147

Cascade-Xiamen
No. 668 Yangguang Rd.
Xinyang Industrial Zone
Haicang, Xiamen City
Fujian Province
P.R. China 361026
Tel: 86-592-651-2500
FAX: 86-592-651-2571

**Cascade (Singapore)
Trading Co.**
Four Seasons Park
Autumn Block - Apt. 1802
12 Cuscaden Walk
Singapore
Tel: 65-834-1935
FAX: 65-834-1936

