



Parts Manual

Model _____ Paper Roll Clamp

Serial Number _____ 77F-RCP-320

cascade®
corporation

For Technical Assistance call: 800-227-2233, Fax: 888-329-8207

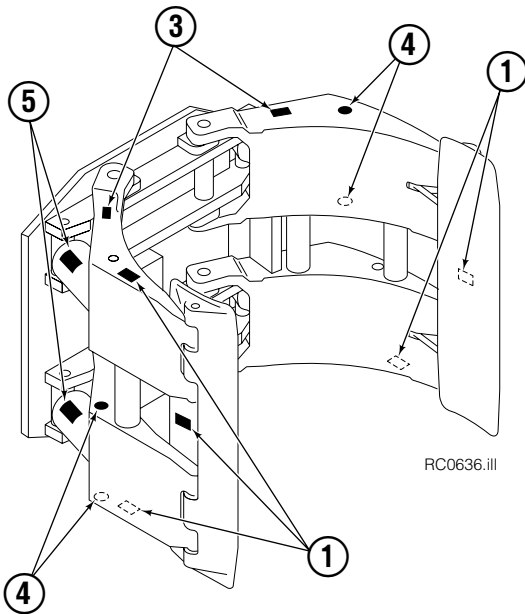
To Order Parts call: 888-227-2233, Fax: 888-329-0234

OR

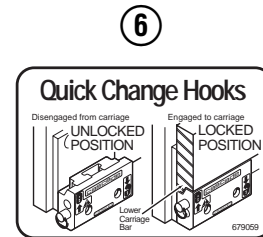
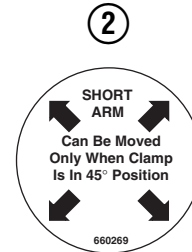
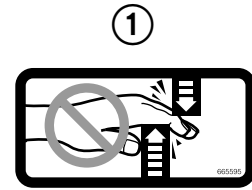
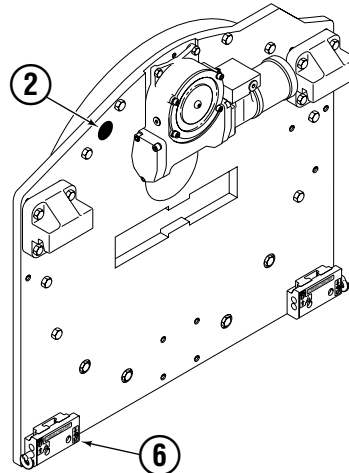
Write: Cascade Corporation, P.O. Box 20187, Portland, OR 97220

Internet: www.cascorp.com

Safety Decals

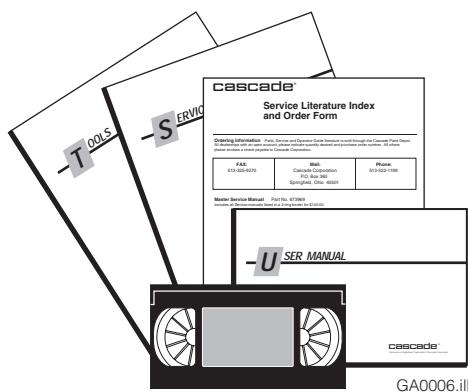


RC0636.ill



Roll Clamp Safety Decals			
REF	QTY	PART NO.	DESCRIPTION
1	6	665595	No Hand Hold Decal
2	3	660269	Short Arm Rotation Position Decal
3	4	656038	Caution Decal
4	4	679150	No Step Decal
5	4	665677	Trapped Pressure Decal
6	1	679059	Quick-Change Hook Decal

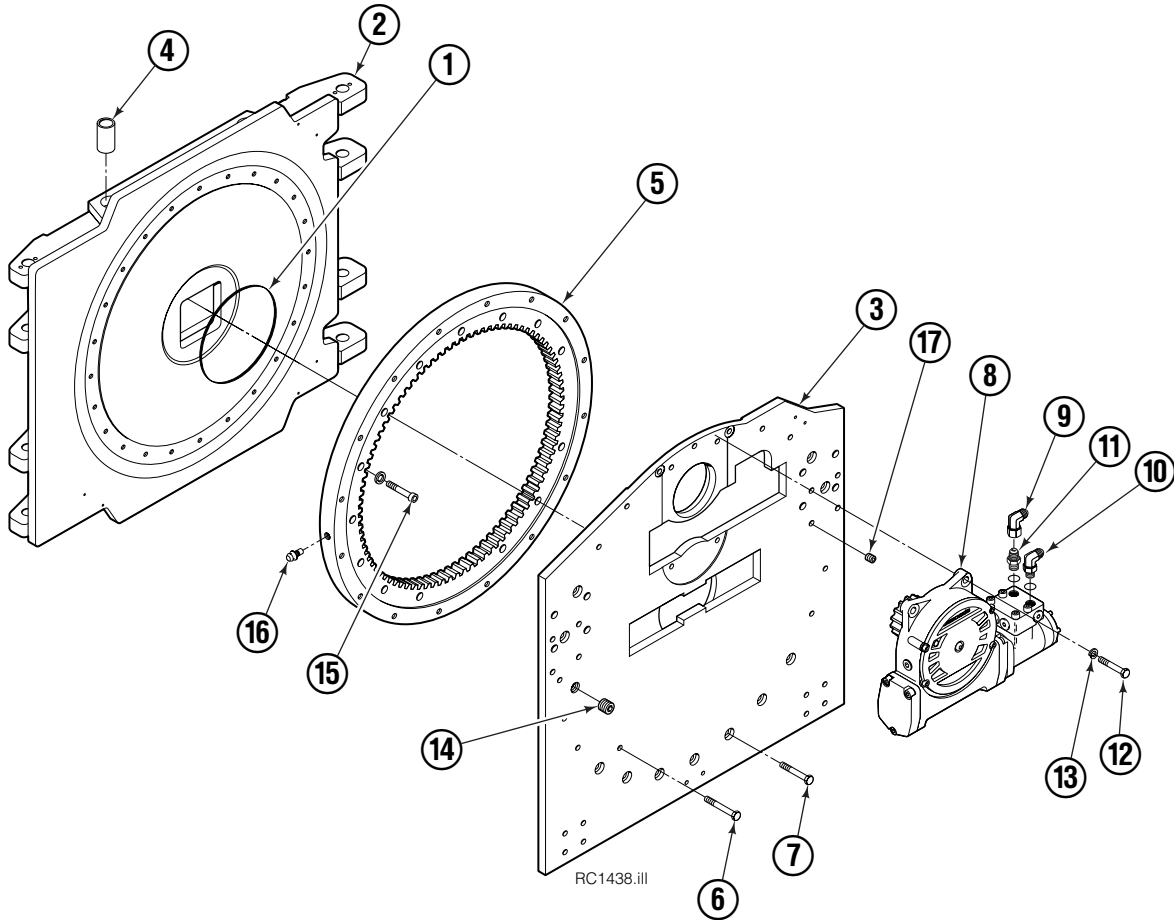
Publications



GA0006.ill

Roll Clamp Publications	
674512	Service Manual
674509	Operator's Guide – Fixed Frame
676268	Operator's Guide – Swing Frame
674510	Installation Instructions – Fixed Frame
674511	Installation Instructions – Swing Frame
677555	Driver Training Video – VHS
678363	Troubleshooting Video – VHS
680664	Servicing Cascade Cylinders – VHS
679929	Tool Catalog
673964	Literature Index Order Form

Frame Group

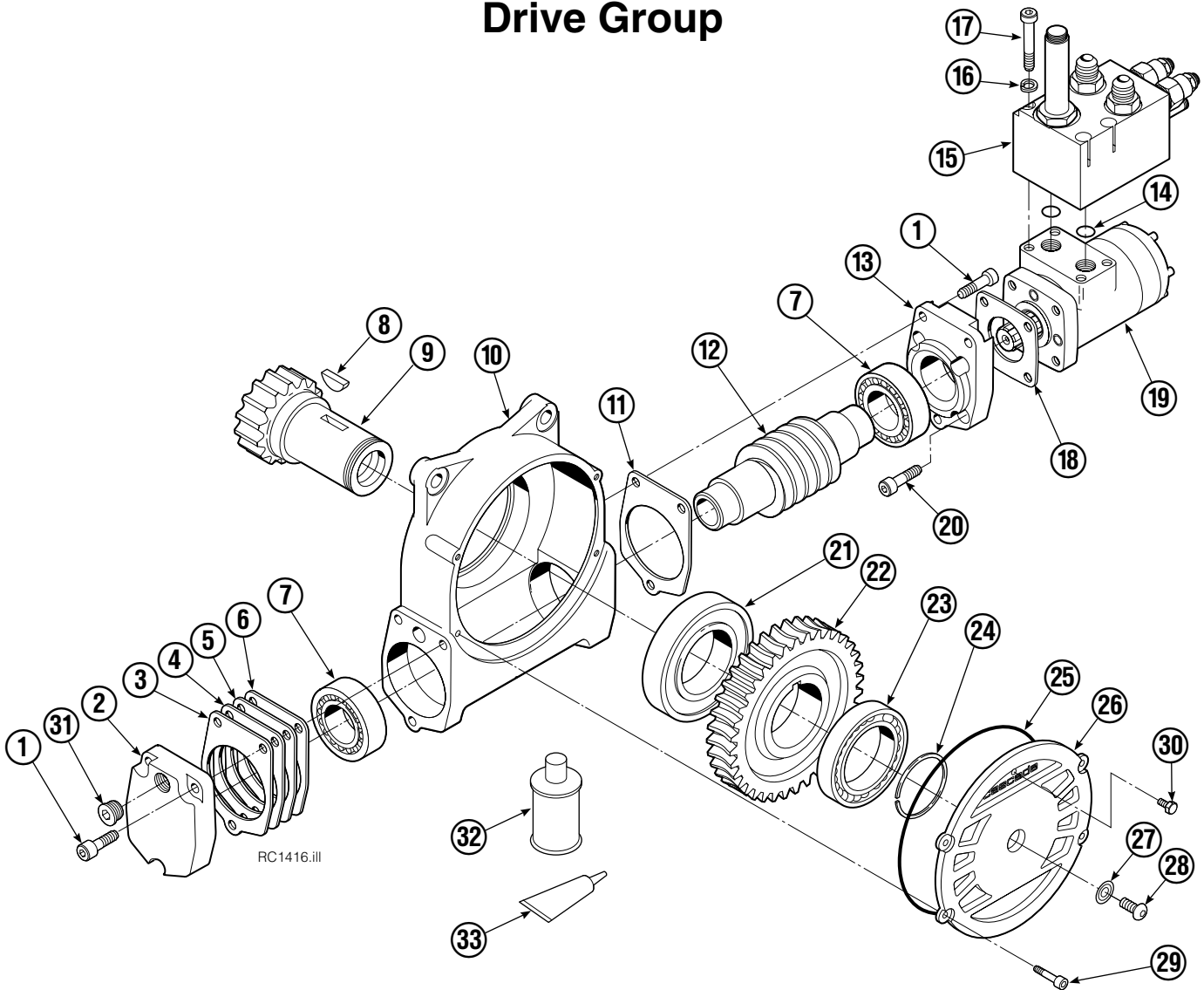


77F			
REF	QTY	PART NO.	DESCRIPTION
		6007989	Frame Group
1	1	670931	Seal
2	1	347804	Faceplate
3	1	678381	Baseplate
4	8	675007	Bushing
5	1	672830	Bearing Assembly
6	13	643539	Capscrew
7	11	643538	Capscrew
8	1	6001025	Drive Group ●
9	1	605761	Fitting, 8-8
10	1	601250	Fitting, 8-8
11	1	601377	Fitting, 8-8
12	4	661742	Capscrew
13	4	6290	Lockwasher
14	1	6605	Plug
15	24	4507	Capscrew
16	1	7401	Grease Fitting
17	8	631385	Plug
	1	672842	Bearing Service Kit (items 5 and 15)

● See Drive Group page for parts breakdown.

Reference: Common Parts Group 6007861, Fastener Kit 699007.

Drive Group



77F							
REF	QTY	PART NO.	DESCRIPTION	REF	QTY	PART NO.	DESCRIPTION
		6001025	Drive Group with 2.8 c.i. Motor	19	1	206392	Drive Motor – 2.8 c.i. ▲
1	6	769570	Capscrew, M12 x 25	20	4	4468	Capscrew, 3/8 NC x .75 GR8
2	1	676855	Cover	21	1	670580	Bearing
3	●	674513	Shim – .005" (blue)	22	1	675609	Worm Gear
4	●	670574	Shim – .010" (brown)	23	1	670581	Bearing
5	●	671757	Shim – .015" (pink)	24	1	7214	Snap Ring
6	●	671758	Shim – .020" (yellow)	25	1	643423	O-Ring
7	2	670579	Bearing	26	1	775552	Cover
8	1	670582	Key	27	1	783609	Seal
9	1	670556	Pinion	28	1	783608	Capscrew, M12 x 16
10	1	775551	Housing	29	4	200882	Capscrew, M8 x 20
11	1	686465	Gasket	30	1	644010	Relief Fitting
12	1	675608	Worm	31	1	604510	Fitting, 6
13	1	775553	Adapter	32	1	656300	Gear Box Lube – 48 oz.
14	2	2705	O-Ring	33	1	668184	Sealant
15	1	6001035	Valve Assembly without Coils ◆			670578	Shim Service Kit (items 3-6,25,33)
16	4	6444	Lockwasher			675637	Bearing Service Kit (items 21 & 33)
17	4	607061	Capscrew, 5/16 NC x 2.25 GR8			675638	Bearing Service Kit (items 3-7,25)
18	1	670575	Gasket			206394	Motor Kit-2.8 (items 11,14,18,19)

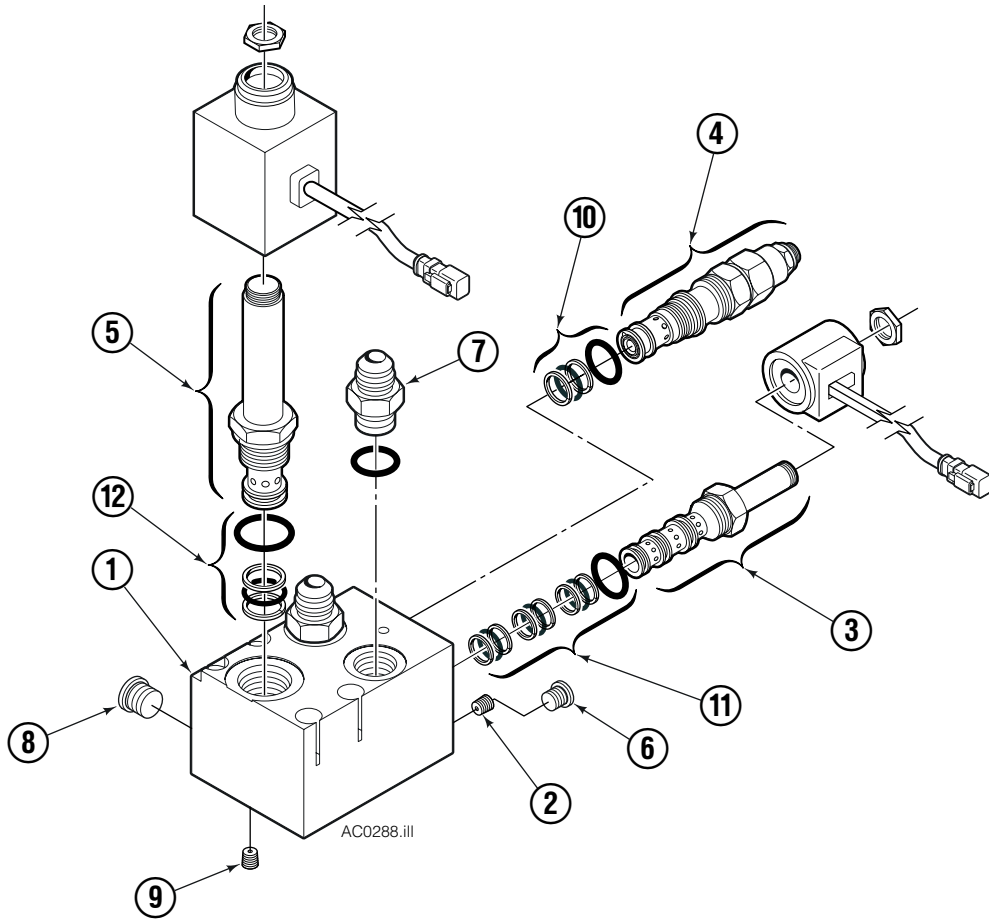
● Quantity as required.

◆ See Valve page for parts breakdown.

▲ See Drive Motor page for parts breakdown.

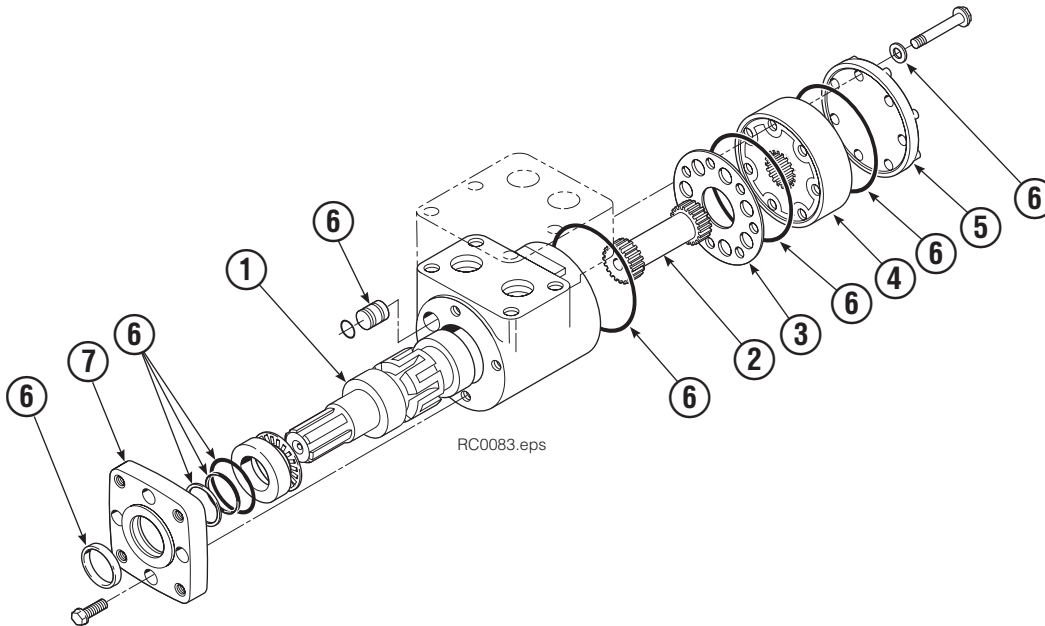
Reference: Common Parts 795490, SK-6864.

Solenoid Valve



REF	QTY	PART NO.	DESCRIPTION
		6001035	Valve Assembly without Coils
1	1	220565	Valve Body
2	4	220641	Orifice
3	1	220627	Solenoid Valve
4	2	6003173	Valve
5	1	221722	Solenoid Valve
6	2	663694	Fitting, 3
7	3	601377	Fitting, 8
8	3	604510	Fitting, 6
9	3	228698	Orifice
10	2	667516	Service Kit
11	1	221049	Service Kit
12	1	6031791	Service Kit

Drive Motor

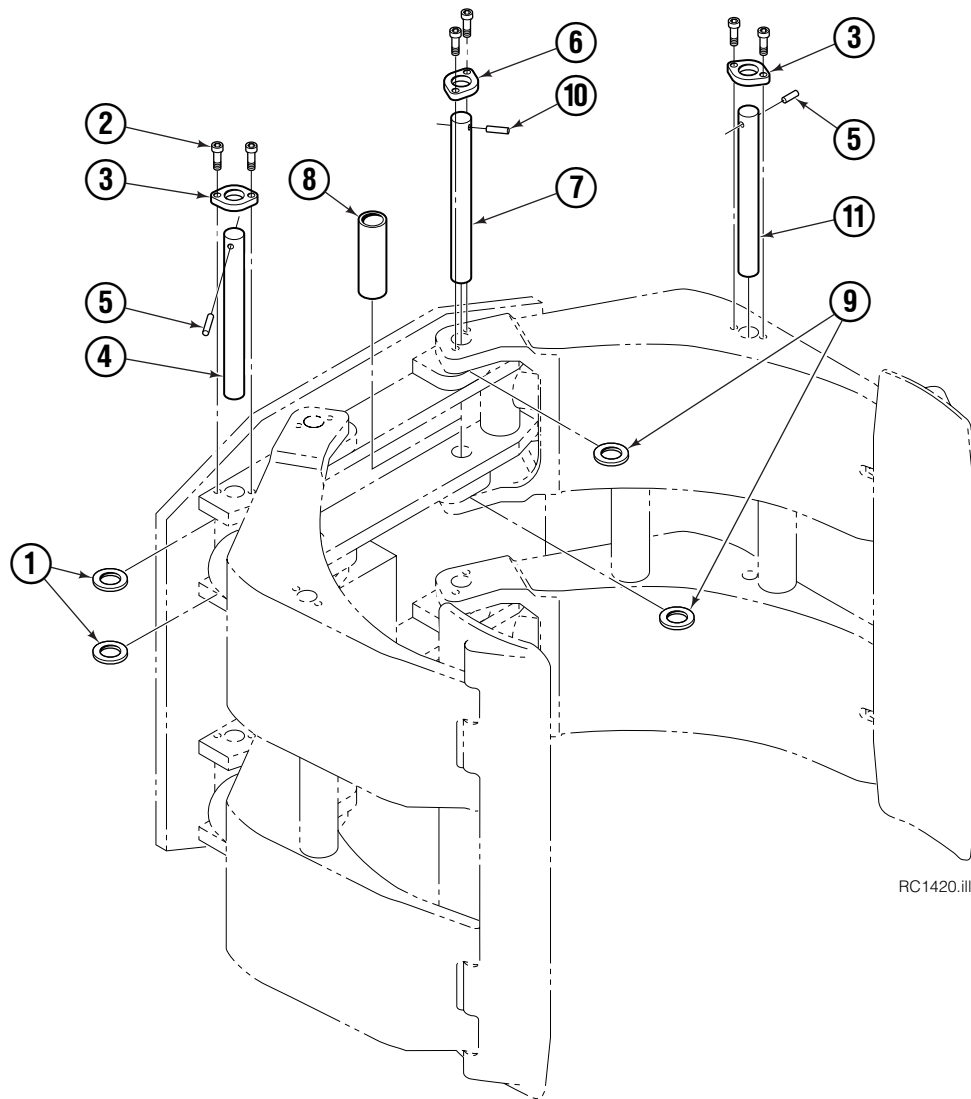


REF	QTY	PART NO.	DESCRIPTION
		206392	Drive Motor – 2.8 c.i.
1	1	675478	Shaft
2	1	675477	Drive
3	1	675479	Spacer Plate
4	1	675480	Gerotor Set (101-1768-007) ■
	1	685075	Gerotor Set (101-1768-009) ■
5	1	675482	End Cap
6	1	206405	Service Kit ●
7	1	685089	Flange (101-1768-007) ■
	1	685090	Flange (101-1768-009) ■

Cascade provides service replacement parts for the listed parts only. Due to cost, if other parts need replacement, the complete drive motor should be replaced.

- See Nameplate under valve for correct part number of Gerotor Set and Flange.
- Compatible with water glycol based hydraulic fluids.

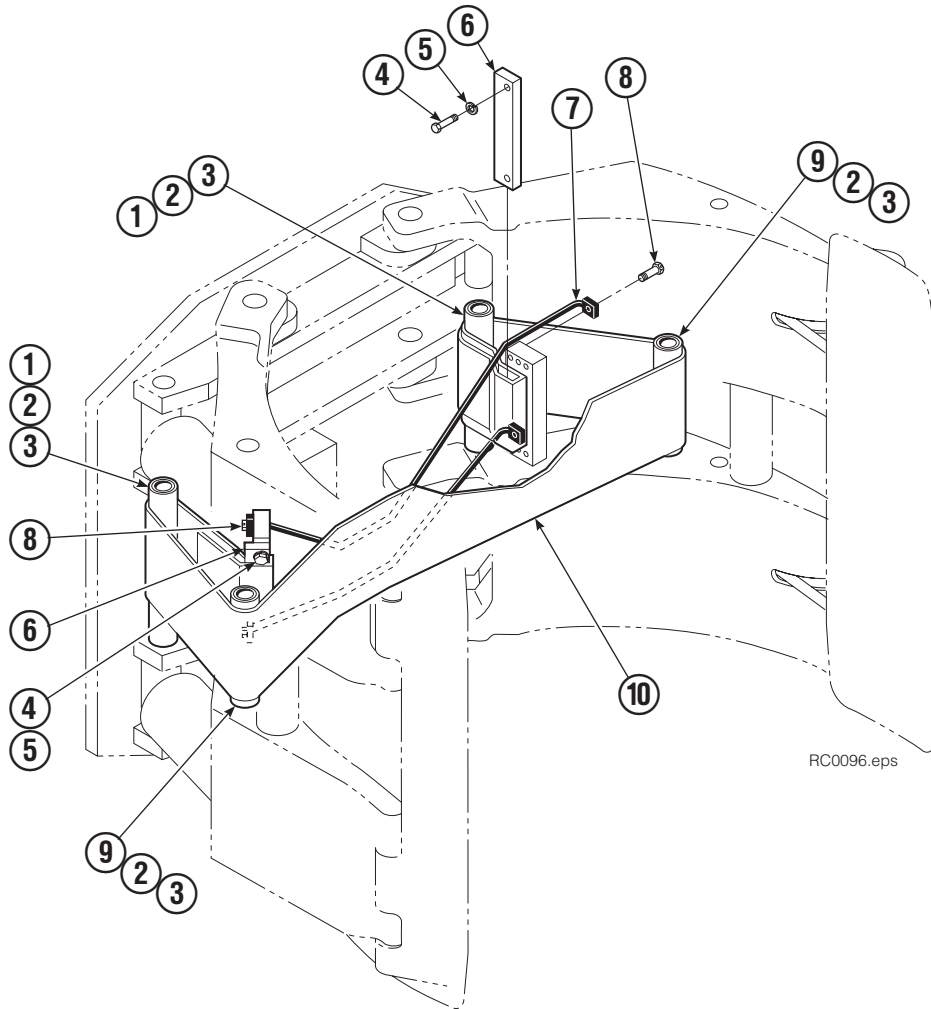
Common Components Group



RC1420.ill

77F			
REF	QTY	PART NO.	DESCRIPTION
		674943	Common Components
1	8	660200	Shim
2	24	4466	Capscrew, 3/8 x .50
3	8	206589	Retainer
4	4	675018	Pin
5	8	673385	Drive Pin
6	4	206591	Retainer
7	4	675022	Pin
8	4	681673	Spacer
9	16	673379	Shim
10	4	675086	Drive Pin
11	4	675020	Pin

Adjustable Bumper Group

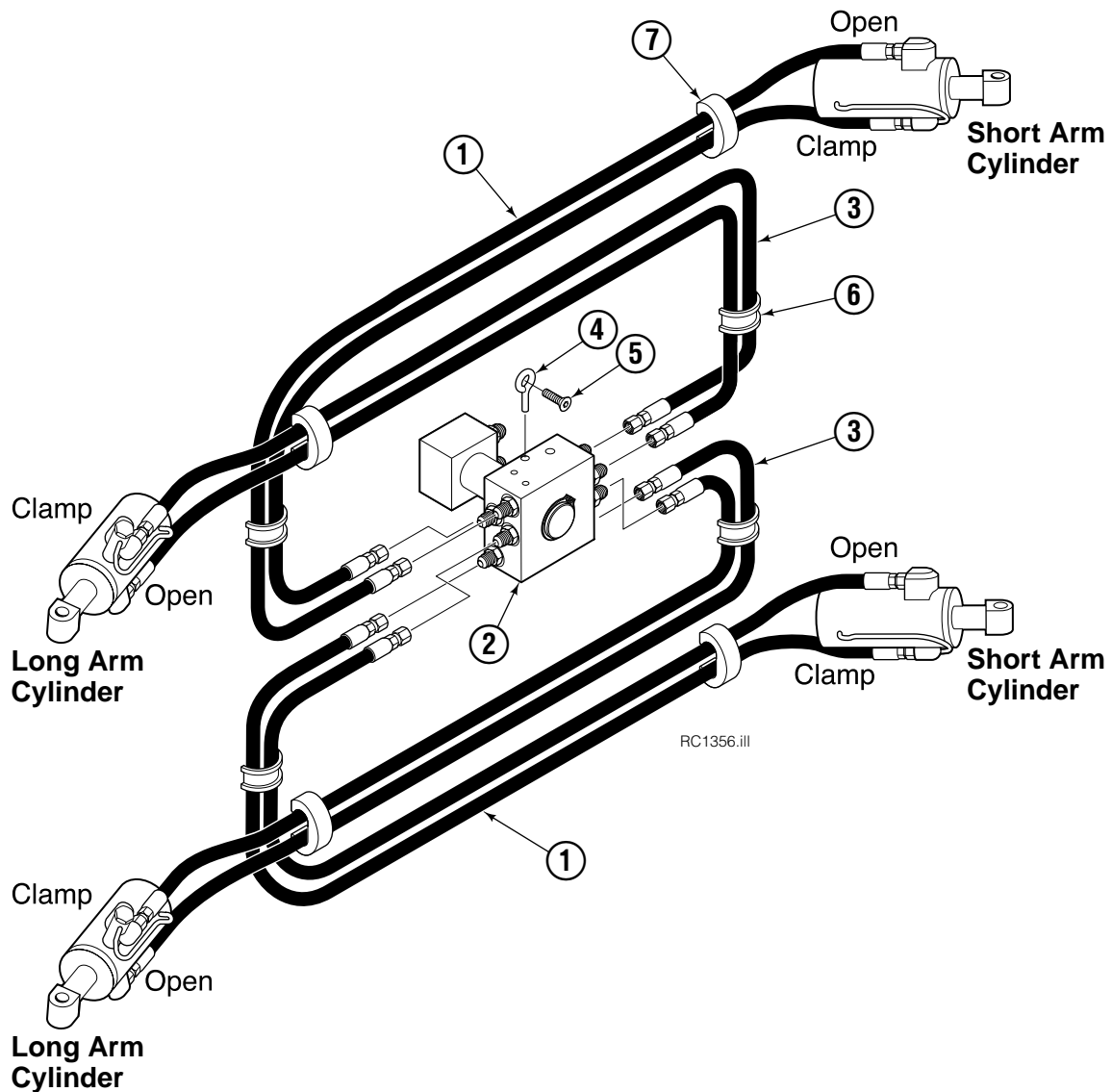


RC0096.eps

77F			
REF	QTY	PART NO.	DESCRIPTION
		6042399	Adjustable Bumper Group
1	2	675027	Roller
2	8	674041	Bearing
3	12	660200	Shim
4	4	636407	Capscrew, .50 NC x 1.50
5	4	6455	Lockwasher, .50 ID
6	2	674850	Bar
7	2	676419	Tie Down
8	4	631161	Capscrew, .312 NC x 1.00
9	2	675026	Roller
10	1	6042398	Belt

Reference: Common Parts Group 674958, SK-5009.

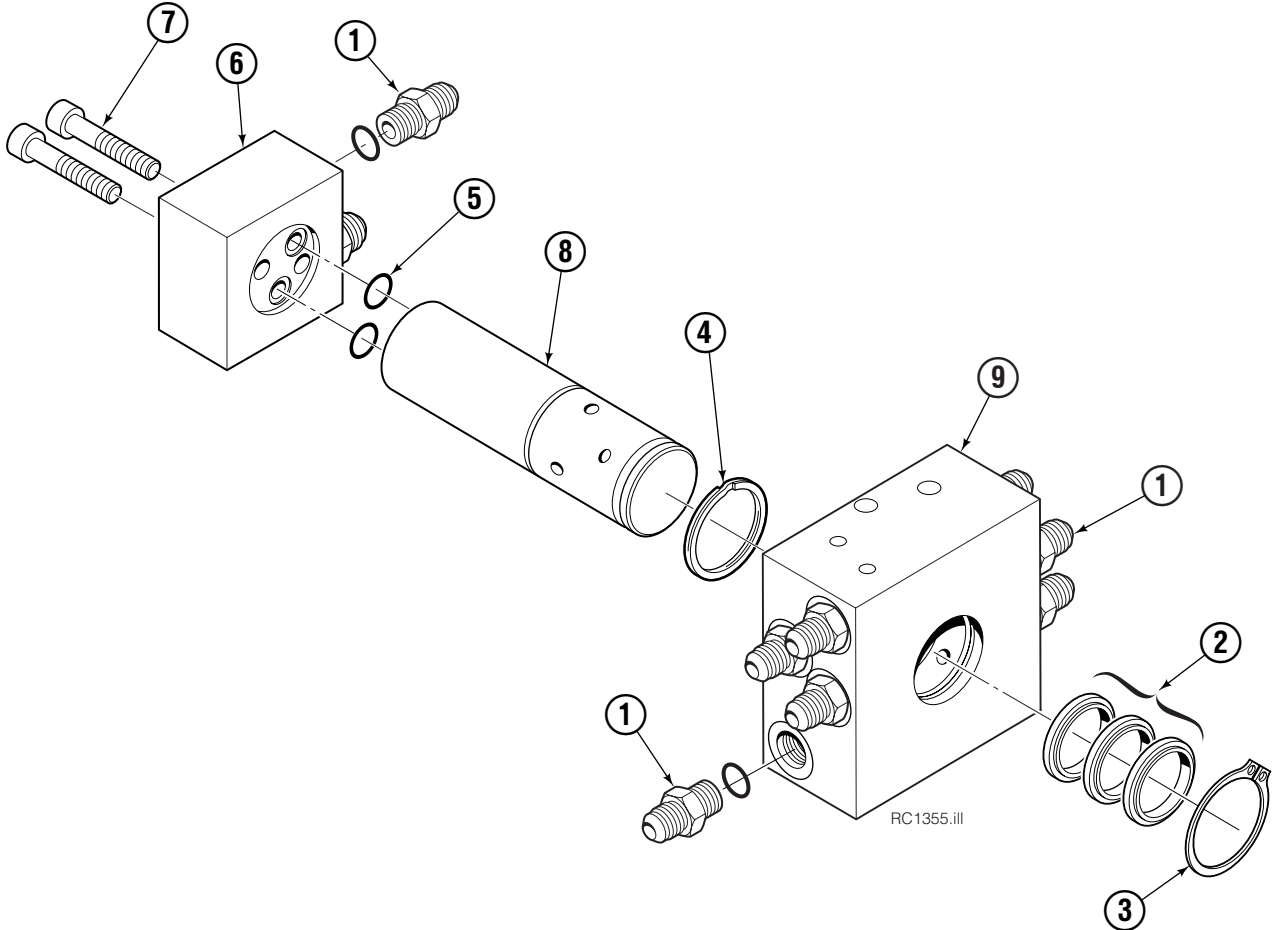
Hosing Group Positioned Short Arm



REF	QTY	PART NO.	DESCRIPTION
		6025747	Hosing Group
1	4	680238	Hose, 58.75 in.
2	1	6023365	Revolving Connection ▲
3	4	681231	Hose, 53.00 in.
4	2	227962	Eye Pin
5	2	4751	Capscrew, .375 x 1.00
6	4	680114	Insert
7	4	673417	Segment

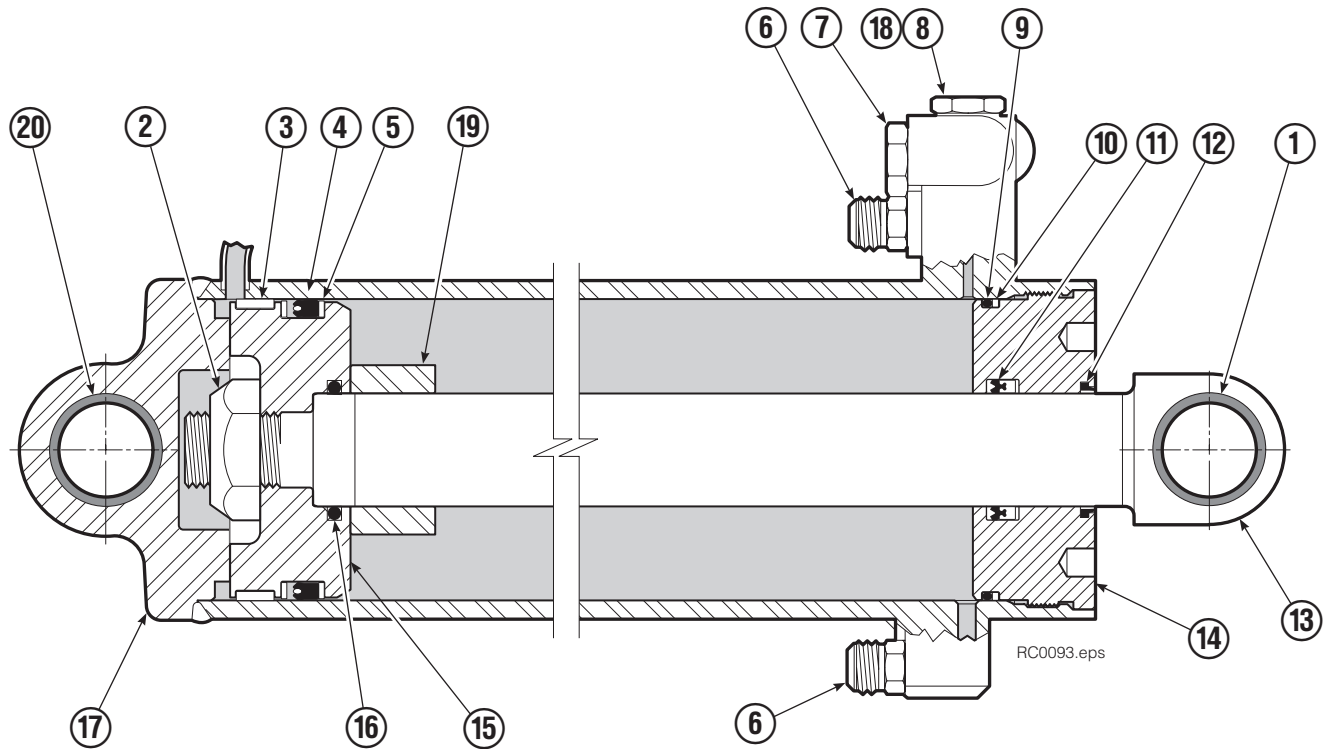
▲ See Revolving Connection page for parts breakdown.

Revolving Connection

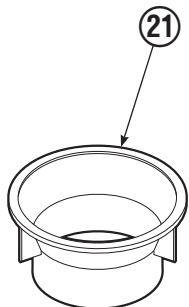


REF	QTY	PART NO.	DESCRIPTION
		6023365	Revolving Connection
1	10	604511	Fitting, 6-6
2	3	214649	Seal
3	1	3138	Snap Ring
4	1	7341	Snap Ring
5	2	684587	O-Ring
6	1	6023344	End Block
7	2	768796	Capscrew, M8 x 35
8	1	6023343	Shaft
9	1	6023358	Body
		6026296	Service Kit

Cylinder Assembly – Short Arm



RC0093.eps

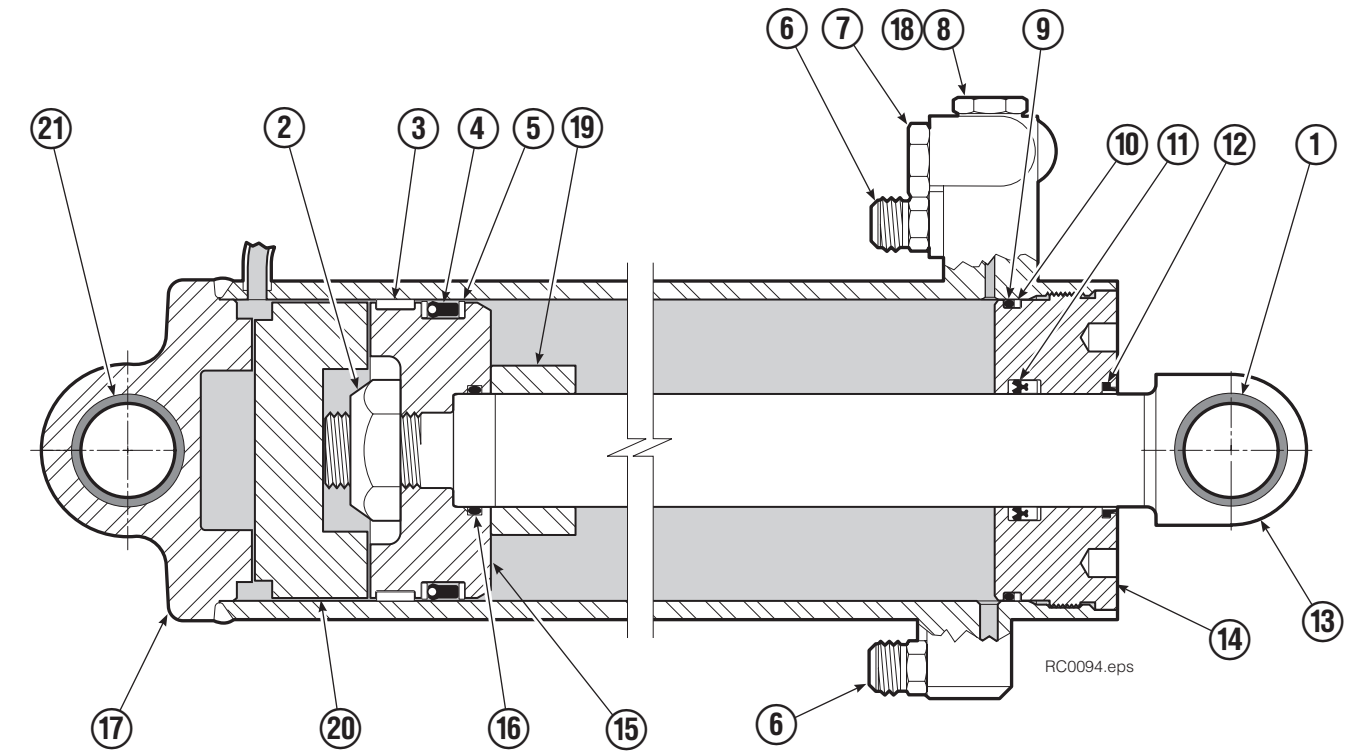


REF	QTY	PART NO.	DESCRIPTION
		557369	Cylinder Assembly
1	1	674843	Bearing
2	1	560997	Nut
3	1	660769	◆ Bearing
4	1	662462	◆ Seal
5	2	638295	◆ Back-Up Ring
6	2	604511	Fitting, 6-6
7	1	556852	Fitting, 4
8	1	557212	Check Valve
9	1	6025373	◆ O-Ring
10	1	615144	◆ Back-Up Ring
11	1	554598	◆ Seal
12	1	564930	◆ Wiper
13	1	557398	Rod
14	1	555724	Retainer
15	1	557389	Piston
16	1	2722	◆ O-Ring
17	1	557174	Shell
18	1	667516	Check Valve Service Kit
19	1	—	Spacer
20	2	675006	Bearing
21	1	669243	Seal Loader
		555725	Service Kit

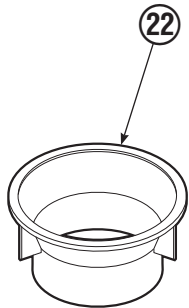
▲ Included in Service Kit 555725.

Reference: S-5313, S-5314.

Cylinder Assembly – Long Arm



RC0094.eps

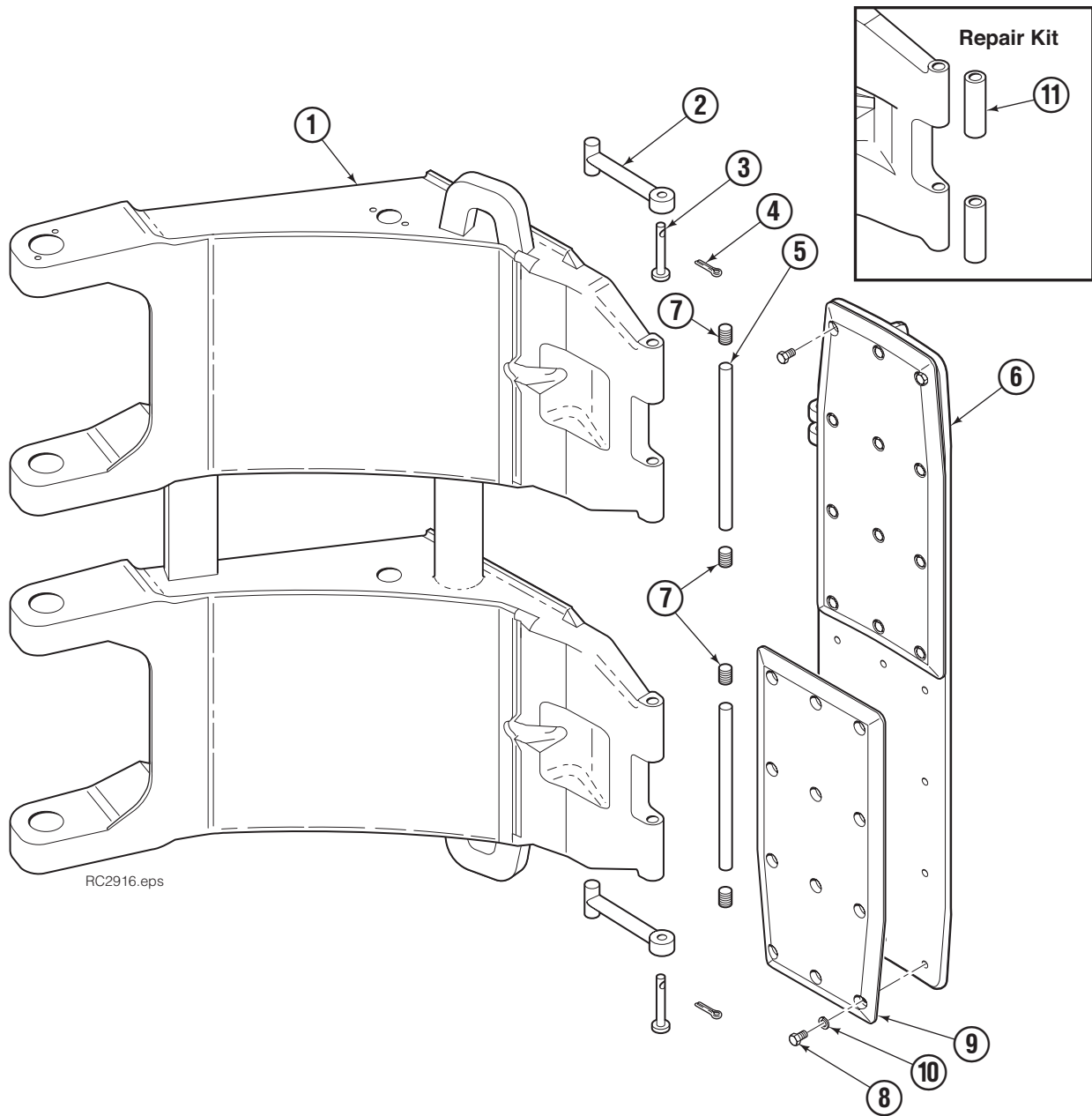


REF	QTY	PART NO.	DESCRIPTION
		557388	Cylinder Assembly
1	1	674843	Bearing
2	1	560997	Nut
3	1	660769	◆ Bearing, Nylon
4	1	662462	◆ Seal
5	2	638295	◆ Nylon Ring
6	2	604511	Fitting, 6-6
7	1	556852	Fitting, 4
8	1	557212	Check Valve
9	1	6025373	◆ O-Ring
10	1	615144	◆ Back-Up Ring
11	1	554598	◆ Seal
12	1	564930	◆ Wiper
13	1	557406	Rod
14	1	555724	Retainer
15	1	557389	Piston
16	1	2722	◆ O-Ring
17	1	557223	Shell
18	1	667516	Check Valve Service Kit
19	1	—	Spacer – Rod (S-5165)
20	1	—	Spacer – Head (S-4353)
21	2	675006	Bearing
22	1	669243	Seal Loader
		555725	Service Kit

◆ Included in Service Kit 555725.

Reference: S-5320, S-5321.

Contact Pad Group – Short Arm



RC2916.eps

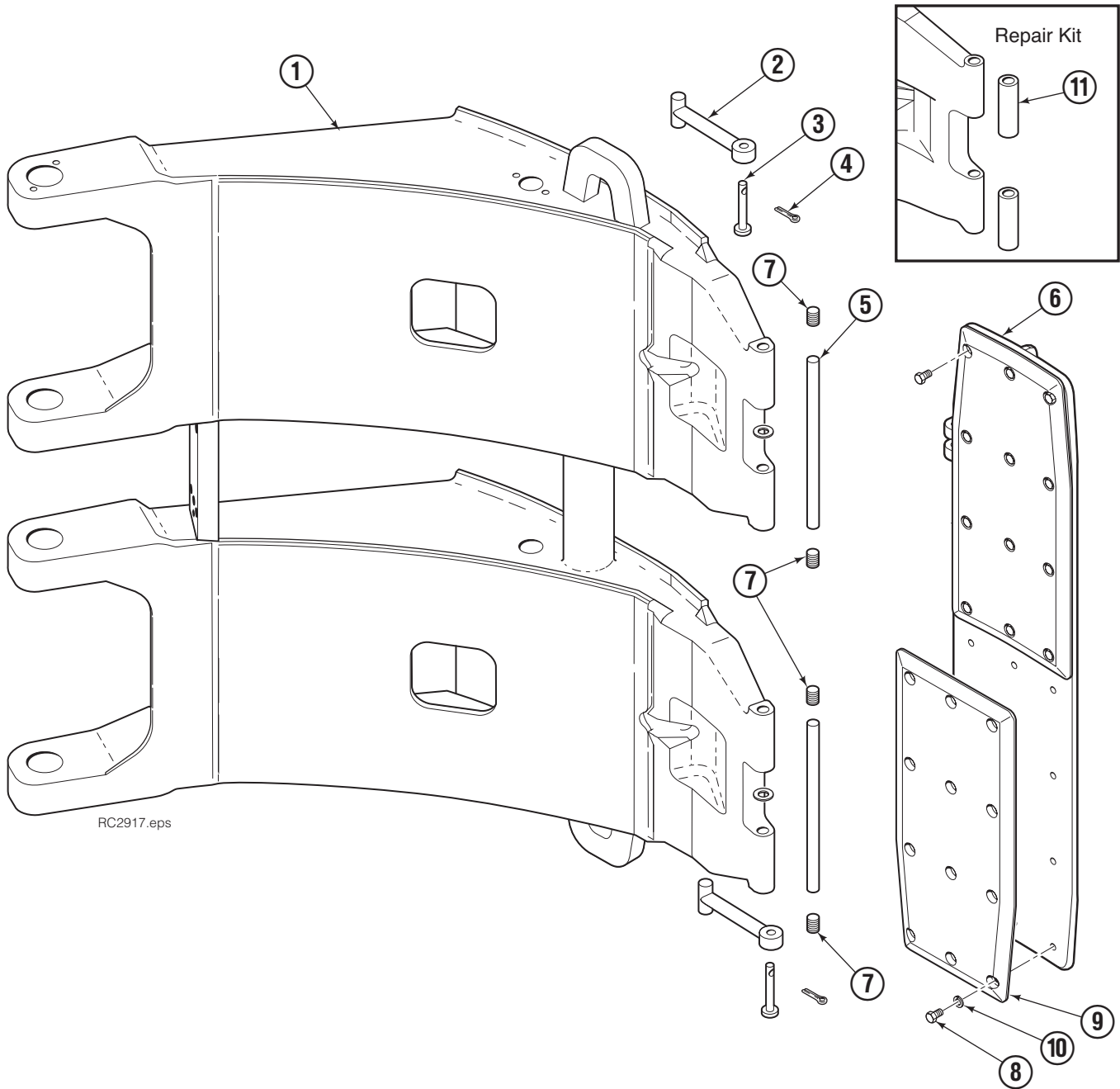
77F

REF	QTY	PART NO.	DESCRIPTION	REF	QTY	PART NO.	DESCRIPTION
		376948	Contact Pad Group – R2 ●				
1	1	6068982	Short Arm	7	2	201102	Plug
2	2	674994	Link		2	689900	Plug
3	2	682978	Clevis Pin	8	24	201263	◆ Capscrew, .312 x .50
4	2	6525	Cotter Pin	9	2	359565	◆ Rubber Pad
5	2	674993	Pin	10	24	6229	◆ Lockwasher, .312
6	1	376960	◆ Contact Pad	11	1	676810	Arm Tip Repair Kit

● Includes items 2 – 10 only.

◆ Included in Contact Pad Assembly 6001582.

Contact Pad Group – Long Arm



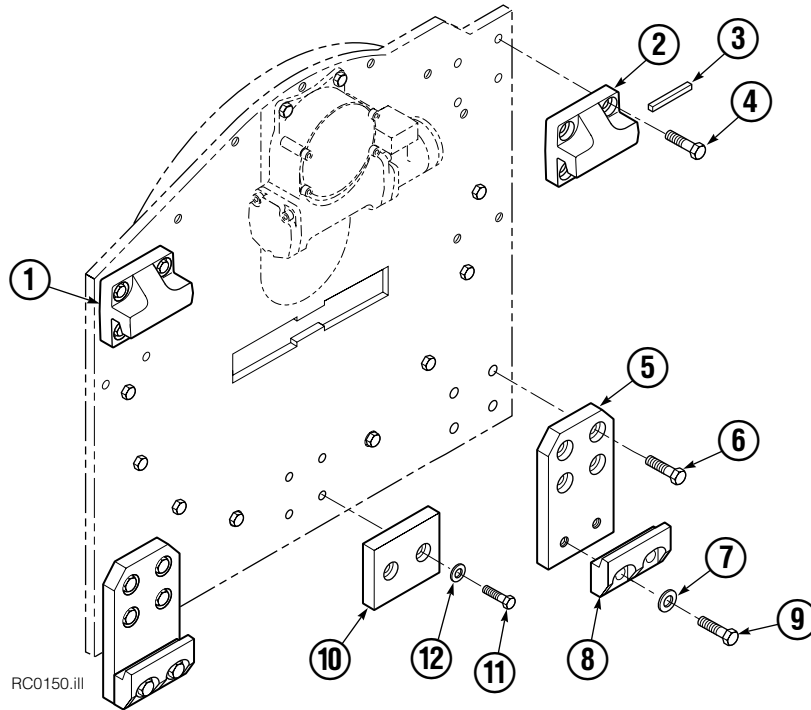
RC2917.eps

77F							
REF	QTY	PART NO.	DESCRIPTION	REF	QTY	PART NO.	DESCRIPTION
		376948	Contact Pad Group – R2 ●				
1	1	6068984	Long Arm	7	2	201102	Plug
2	2	674994	Link	7	2	689900	Plug
3	2	682978	Clevis Pin	8	24	201263	◆ Capscrew, .312 x .50
4	2	6525	Cotter Pin	9	2	359565	◆ Rubber Pad
5	2	674993	Pin	10	24	6229	◆ Lockwasher, .312
6	1	376960	◆ Contact Pad	11	1	676810	Arm Tip Repair Kit

● Includes items 2 – 10 only.

◆ Included in Contact Pad Assembly 6001582.

Bolt-On Mounting Group



RC0150.iii

Class IV, 0°			
REF	QTY	PART NO.	DESCRIPTION
		678504	Mounting Group
1	1	675062	Upper Hook – LH
2	1	675061	Upper Hook – RH
3	1	670704	Stop Kit
4	8	675078	Capscrew, 3/4 NC x 1.50
5	2	675082	Extension
6	8	673387	Capscrew, 5/8 NC x 1.75
7	4	670692	Washer
8	2	679832	Lower Hook
9	4	675079	Capscrew, 3/4 NC x 2.00
10	1	675081	Center Spacer
11	2	4472	Capscrew, 3/8 NC x 1.50
12	2	6372	Lockwasher, 3/8 in. ID



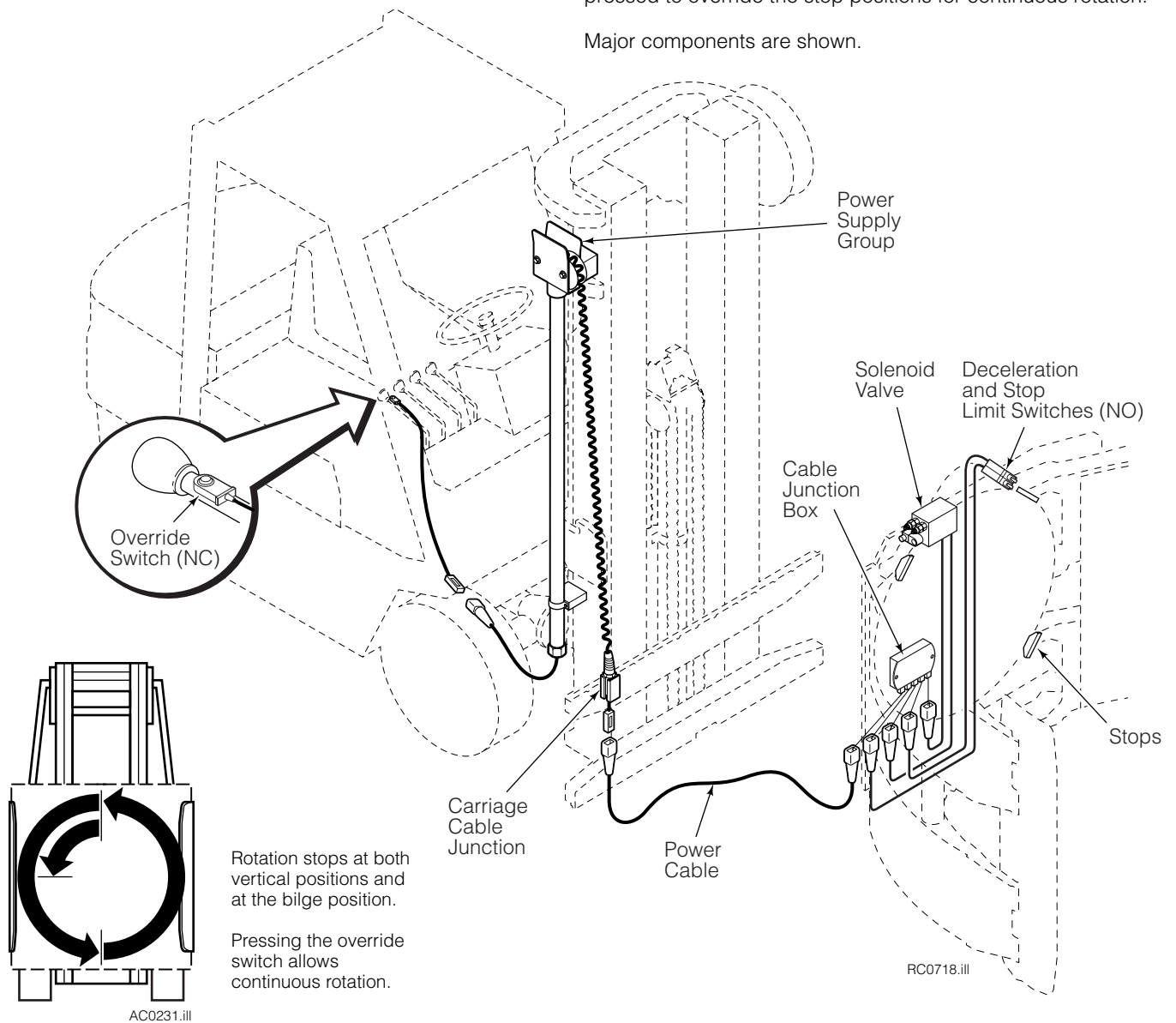
Installation Instructions

Electronic Rotational Control Group

This Manual provides installation instructions for Cascade Electronic Rotational Control Kits. Rotational Control provides accurate stops during rotation to position the attachment arms at true vertical or bilge position to reduce product damage of misclamped loads. An electrical supply

circuit such as Cascade's Power Supply (recommended) or Cable Reel is required to provide an electrical connection between the Electronic Rotational Control on the attachment and the truck electrical system. A normally closed pushbutton switch mounted on the truck ROTATE control lever is depressed to override the stop positions for continuous rotation.

Major components are shown.



cascade®
corporation

For Technical Support . . .

Call: 1-800-227-2233 Fax: 1-888-329-8207
Internet: www.cascorp.com
Write: Cascade Corporation, PO Box 20187, Portland, OR 97294

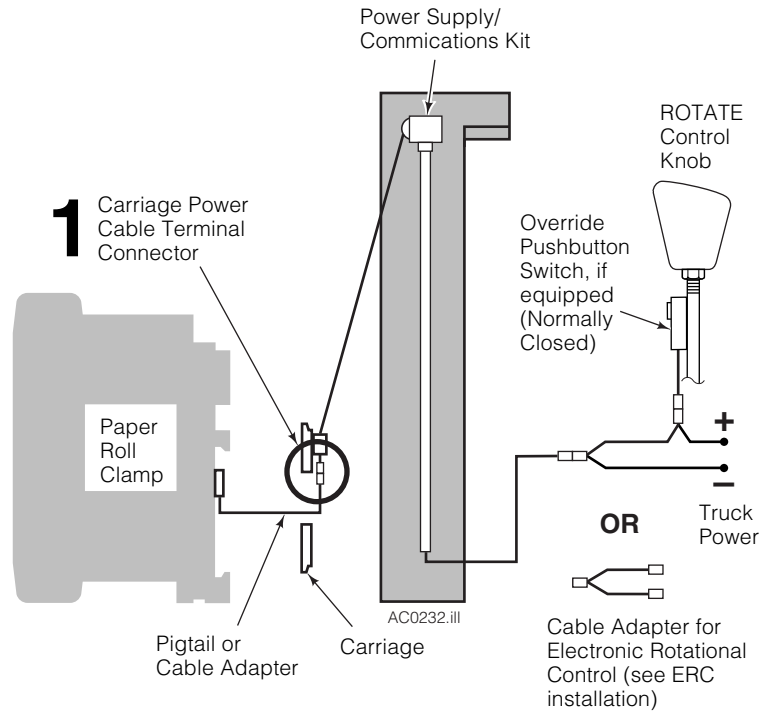
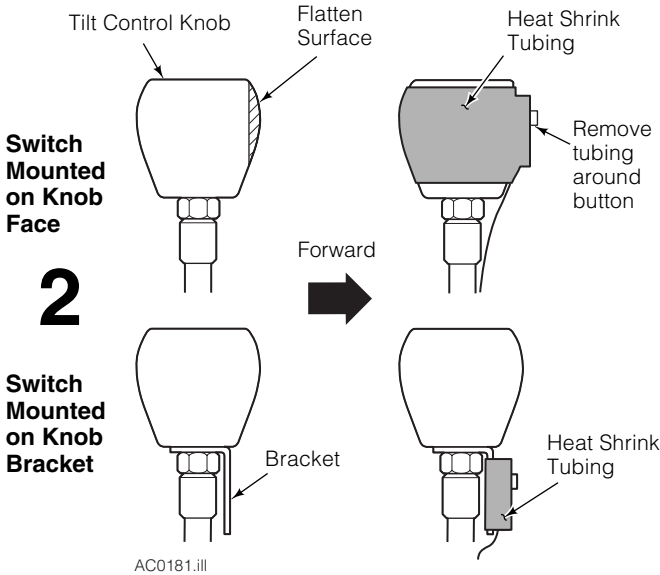
To Order Parts . . .

Call: 1-888-227-2233 Fax: 1-888-329-0234
Internet: www.cascorp.com
Write: Cascade Corporation, 2501 Sheridan Ave., Springfield, OH 45505

Cable, Switch Installation

- 1 Connect the power cable from the Electronic Rotational Control (ERC) enclosure on the back of the attachment to the power supply cable end at the truck carriage.
- 2 Install pushbutton switch on ROTATE control lever.

NOTE: This installation shows connection to Cascade's Power Supply/Communications Kit 228719 or 6001137 which includes components for over-the-mast electrical supply from the power cable to the carriage cable connection. See Installation Instructions 228179.



Operation and Adjustment

- 1 Test the installation before putting the truck in service. When rotating, attachment travel should stop at the vertical and bilge handling positions. Wait 3 seconds to rotate after stopping **OR** press the rotate override button to continue rotating.

- If rotation **stops** at the vertical or bilge position, continue with step 2.
- If rotation **stops momentarily and then continues** at the vertical or bilge positions:

A Reduce the hydraulic input pressure for the Rotate function.

OR

B Adjust both counterbalance cartridges CCW in 1/2 turn increments until rotation stop at the vertical and bilge position.

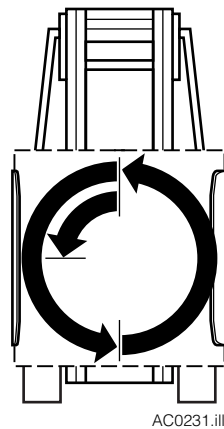
- If rotation **does not stop** at the vertical or bilge positions:

A Inspect the wiring installation. Look for loose connections or pinched cables.

B The limit switch end rollers are not fully engaging the deceleration ramp and stop capscrew at the vertical or bilge position. Adjust the limit switch actuators to engage the ramp and stop capscrew. The ramp and stop can also be adjusted for precision of the stop position. The stop capscrew height is also adjustable.

- 2 To continue rotation, wait 3 seconds after stopping or the rotate override button must be pressed to continue rotation.

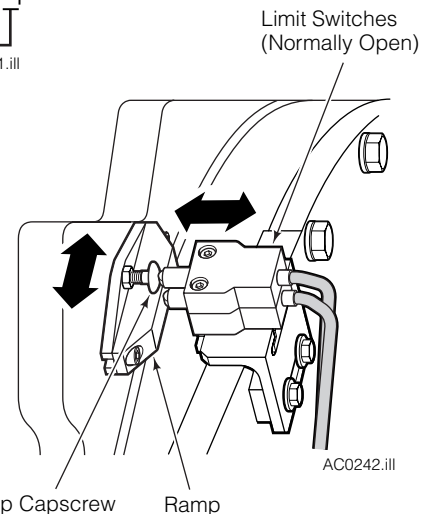
To rotate without stopping, press the override button.



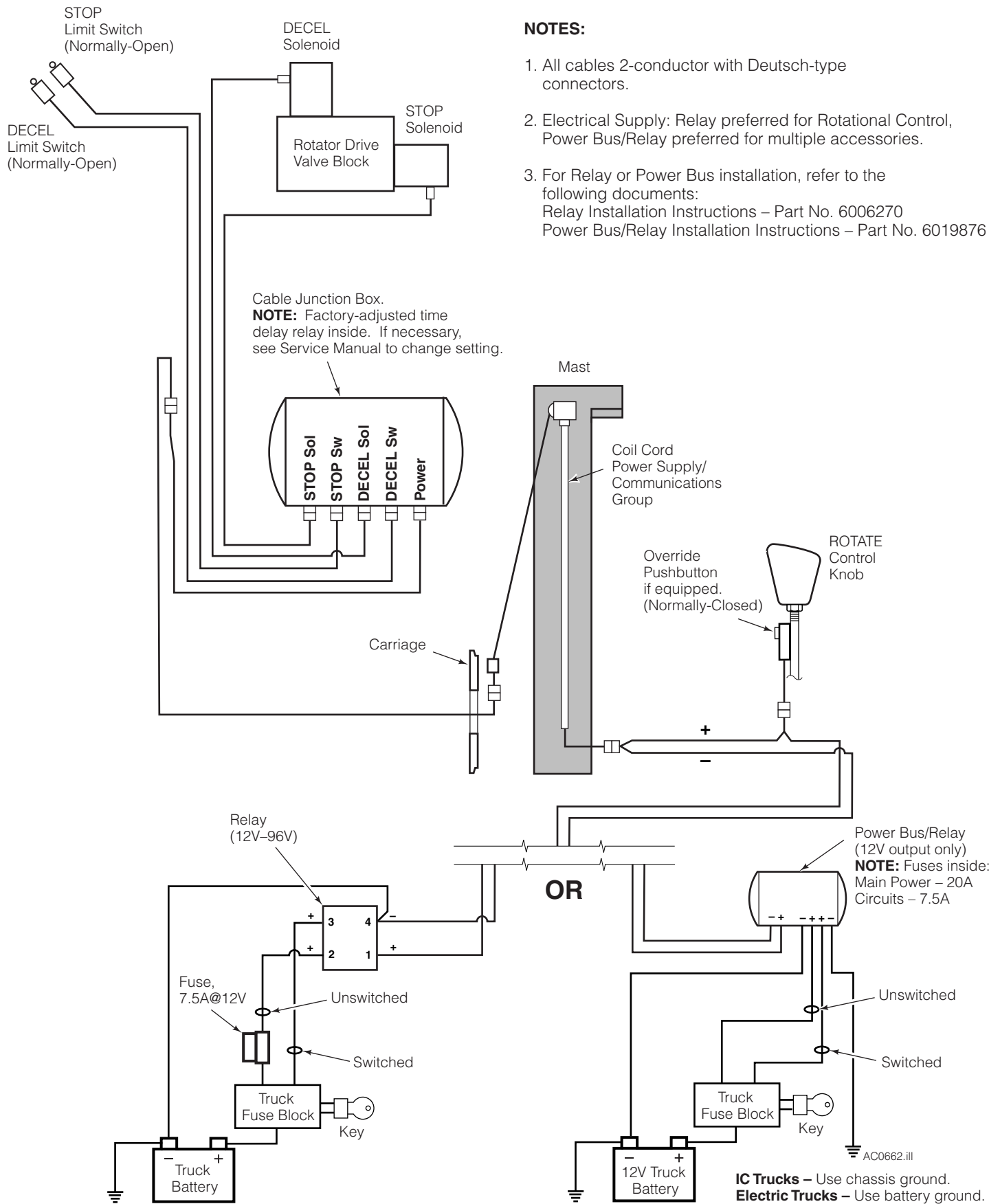
Rotation stops at both vertical positions and at the bilge position.

Pressing the override switch allows continuous rotation.

Wait 3 seconds or press override button to continue rotating.



Rotational Control Electrical Hookup



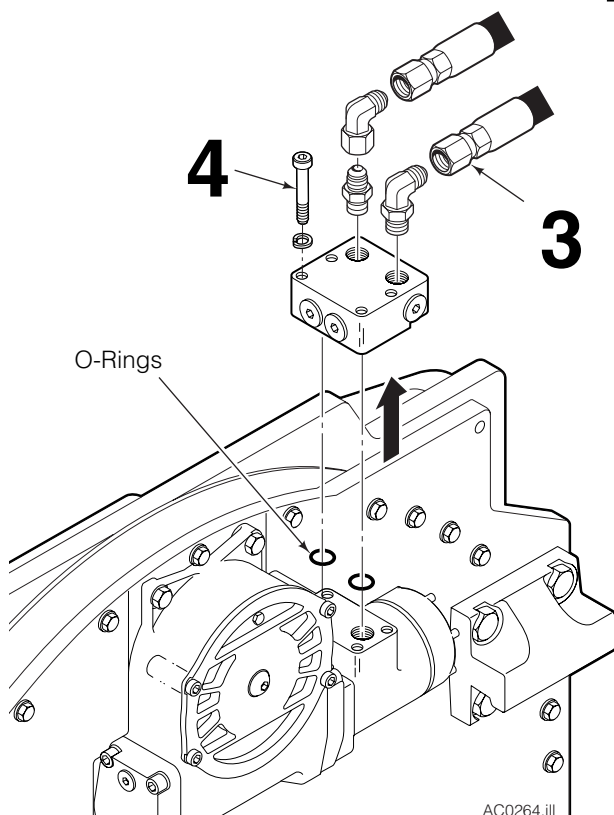
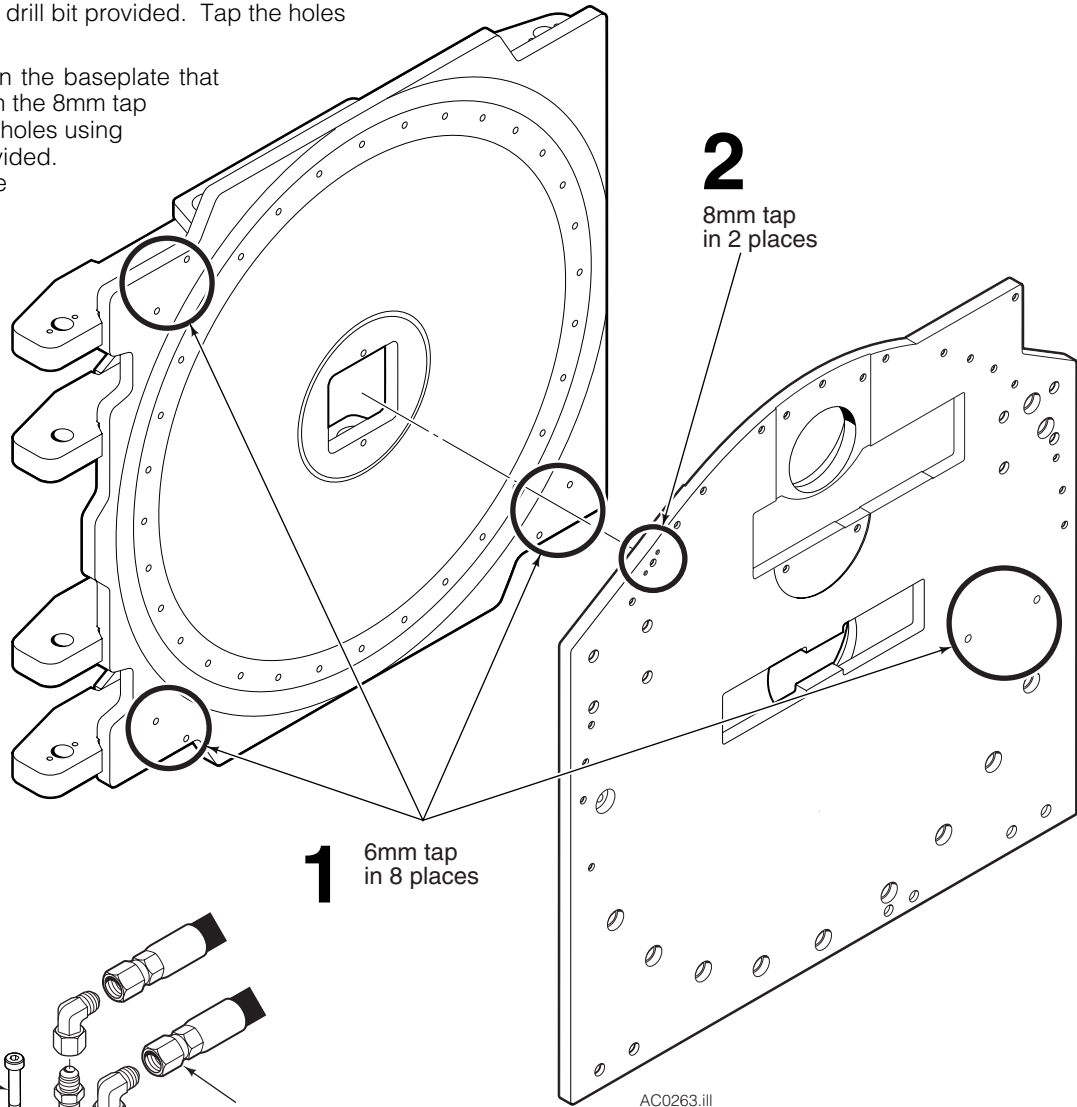
NOTES:

1. All cables 2-conductor with Deutsch-type connectors.
2. Electrical Supply: Relay preferred for Rotational Control, Power Bus/Relay preferred for multiple accessories.
3. For Relay or Power Bus installation, refer to the following documents:
 Relay Installation Instructions – Part No. 6006270
 Power Bus/Relay Installation Instructions – Part No. 6019876

Retrofit Installation

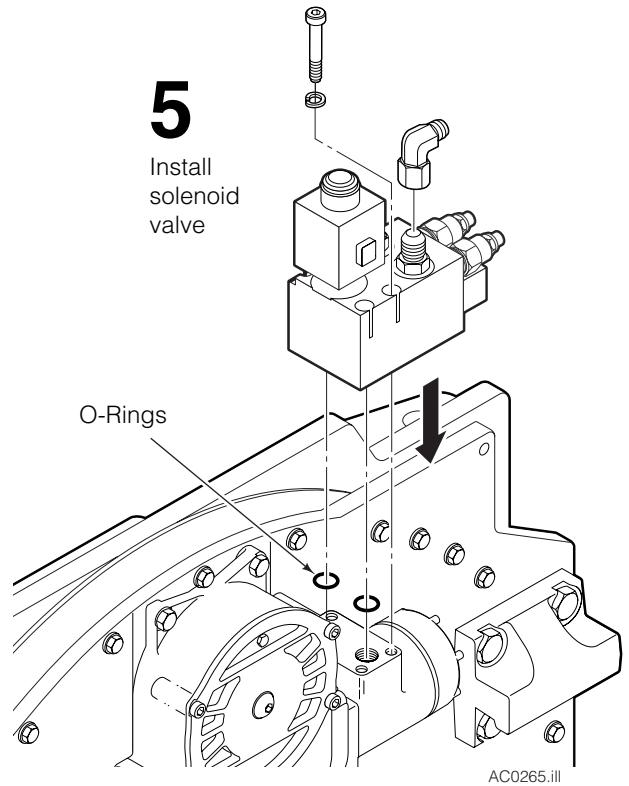
Rotational control is also available as a field installable kit for attachments that have predrilled faceplates and baseplates.

- 1** Locate the eight holes that need to be tapped with the 6mm tap provided. Six holes are located in the faceplate and two holes are located in the baseplate. Drill out the holes using the 5.3mm drill bit provided. Tap the holes using the 6mm tap.
- 2** Locate the two holes in the baseplate that need to be tapped with the 8mm tap provided. Drill out the holes using the 7.3mm drill bit provided. Tap the holes using the 8mm tap.



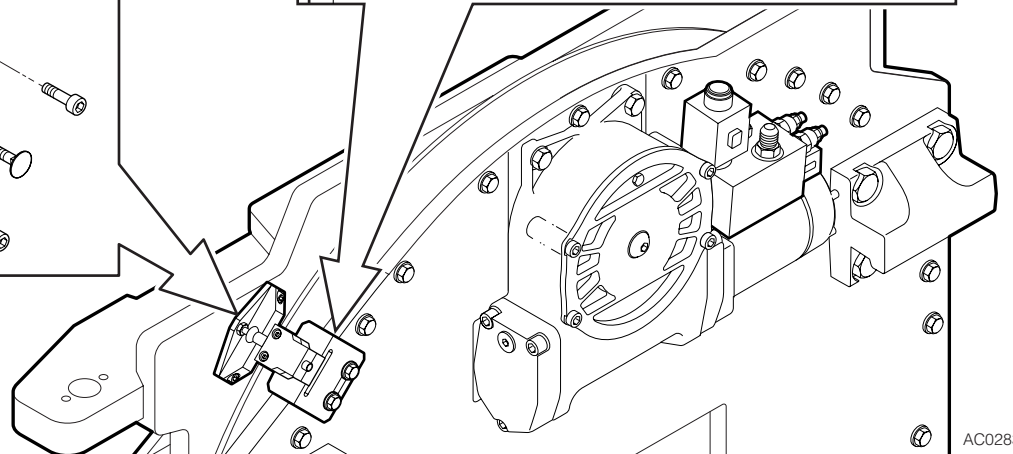
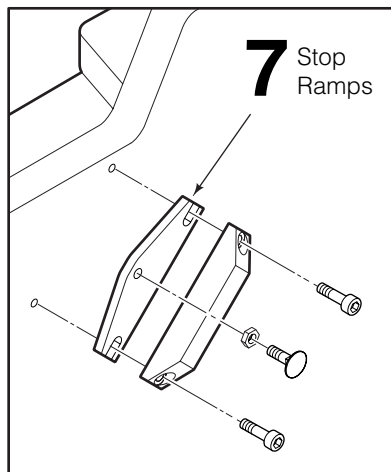
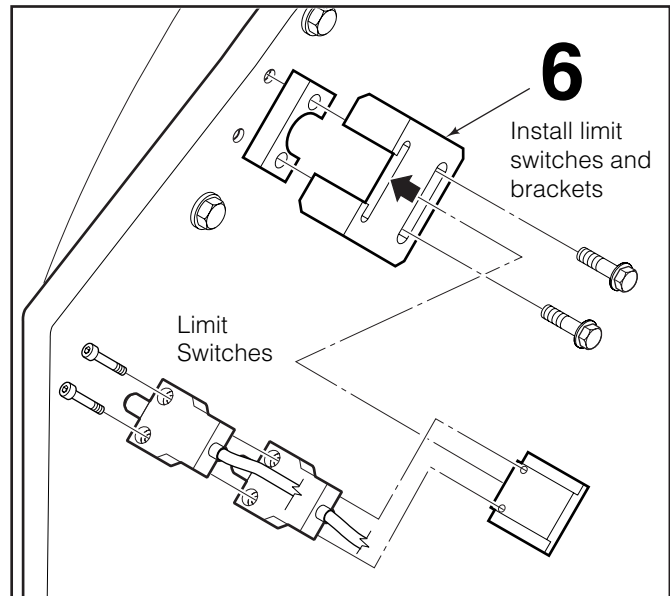
- 3** Disconnect hydraulic hoses to the drive group. Tag the hoses for reassembly.
- 4** Remove the four capscrews fastening the check valve to the drive group. Keep track of the two O-rings between the check valve and drive motor.

- 5** Install the new solenoid valve to the drive group. Place the two O-rings between the solenoid valve and drive motor and install the four capscrews. Tighten the capscrews to a torque of 20 ft.-lbs.

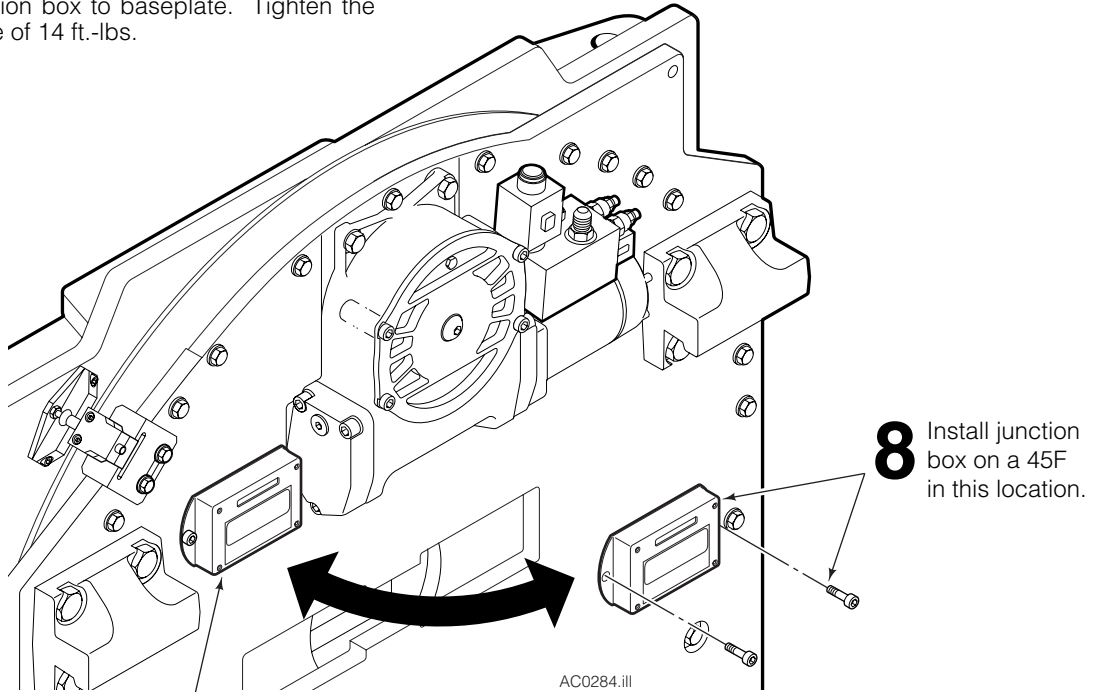


- 6** Install the limit switches and brackets to the baseplate. Tighten the baseplate bracket capscrews to a torque of 14 ft.-lbs.

- 7** Install the stop ramps to the faceplate. Tighten the stop capscrews to a torque of 3 ft.-lbs.



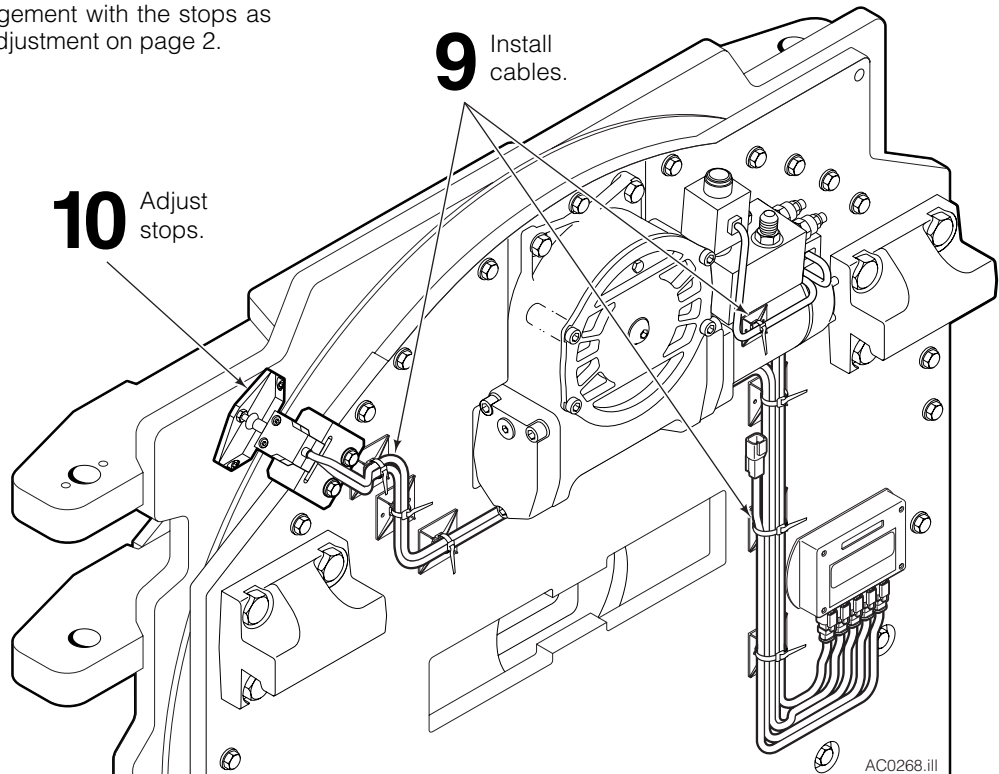
- 8** Install the cable junction box to baseplate. Tighten the capscrews to a torque of 14 ft.-lbs.



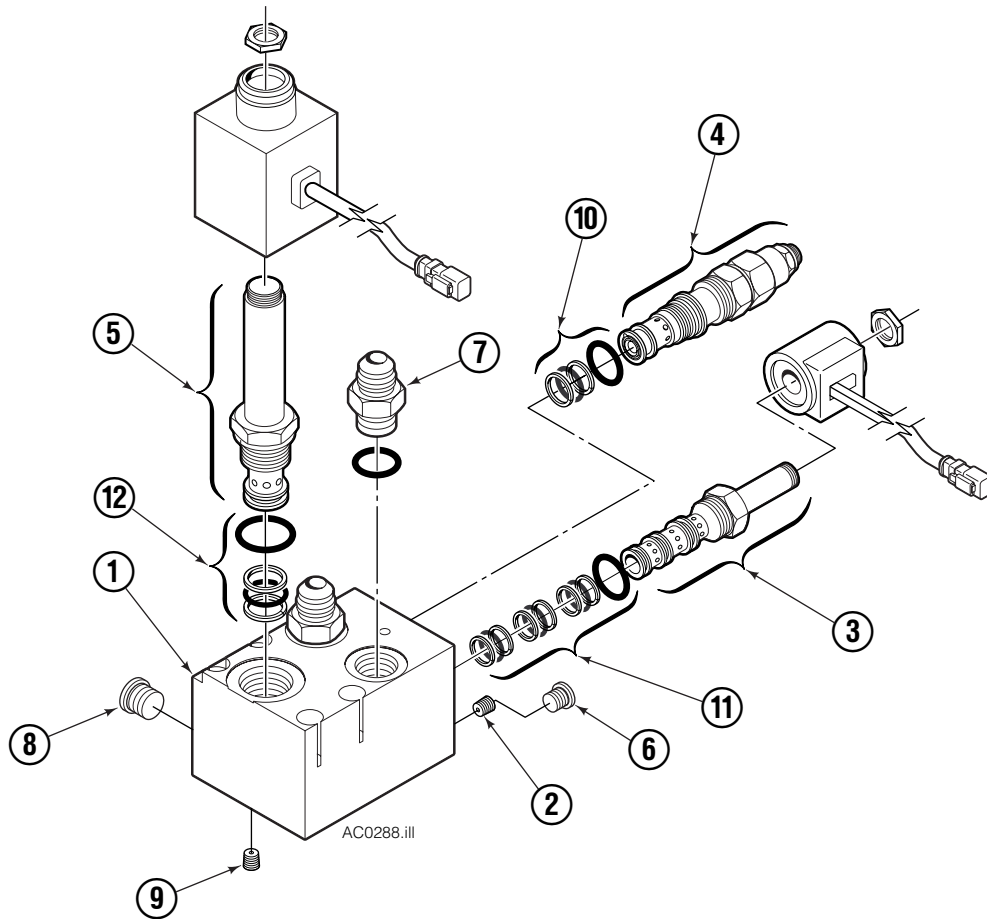
- 8** Install junction box on a 60F through 150F in this location.

- 9** Install the cables. Use the adhesive blocks and wire ties to secure the wiring.

- 10** Adjust the limit switch engagement with the stops as described in Operation and Adjustment on page 2.



Solenoid Valve



REF	QTY	PART NO.	DESCRIPTION
		6001035	Valve Assembly without Coils
1	1	220565	Valve Body
2	4	220641	Orifice
3	1	220627	Solenoid Valve
4	2	6003173	Valve
5	1	221722	Solenoid Valve
6	2	663694	Fitting, 3
7	3	601377	Fitting, 8
8	3	604510	Fitting, 6
9	3	228698	Orifice
10	2	667516	Service Kit
11	1	221049	Service Kit
12	1	6031791	Service Kit

Do you have questions you need answered right now? Call your nearest Cascade Parts Department. Visit us online at www.cascorp.com

**Cascade Corporation
U.S. Headquarters**
2201 NE 201st
Fairview, OR 97024-9718
Tel: 800-CASCADE (227-2233)
FAX: 888-329-8207

Cascade Canada Inc.
5570 Timberlea Blvd.
Mississauga, Ontario
Canada L4W-4M6
Tel: 905-629-7777
FAX: 905-629-7785

Cascade GmbH
Niederwippekühl 1
58579 Schalksmühle
Germany
Tel: 02355-50900
FAX: 02355-509020

Cascade Finland
A. Petreliuksenkatu 3
01370 Vantaa
Finland
Tel: 09-8361925
FAX: 09-8361935

**Cascade N.V.
Benelux Sales and Service**
Damsluisweg 56
PO Box 3009
1300 El Almere
The Netherlands
Tel: 036-5492950
FAX: 036-5492974

Cascade (UK) Ltd.
Unit 4, 12 O'Clock Court
Attercliffe Road
Sheffield, S4 7WW
England
Tel: 0870-850-8756
FAX: 0870-850-8757

**Sales Scotland
Macade Systems Ltd.**
18 Melford Road
Righead Ind. Estate
Bellshill ML4 3LR
Scotland
Tel: 01698-845777
FAX: 01698-845888

Cascade (Africa) Pty. Ltd.
PO Box 625, Isando 1600
60A Steel Road
Sparton, Kempton Park
South Africa
Tel: 27-11-975-9240
FAX: 27-11-394-1147

Cascade Scandinavia AB
Hammarvägen 10
PO Box 124
S-56723 Vaggeryd
Sweden
Tel: 039-336950
FAX: 039-336959

**Cascade France
S.A.R.L. MHP**
1D Rue De Charaintru BP 18,
91360 Epinay-Sur-Orge
France
Tel: 01-6454-7500
FAX: 01-6454-7501

Cascade Hispania S.A.
Carrer 5, Sector C
Zona Franca Duanera
Poligono de la Zona Franca
08040 Barcelona, Spain
Tel: 93-264-07-30
FAX: 93-264-07-31

Cascade Italia S.R.L.
Via Dell'Artigianato 1
37050 Vago di Lavagno (VR)
Italy
Tel: 39-045-8989111
FAX: 39-045-8989160

Movimenta Lda.
Parque Industrial
Vale do Alecrim, Lote 108
2950-403 Palmela
Portugal
Tel: 351-212387340
FAX: 351-212387349

**Sales Switzerland
Fahrzeugbedarf**
8810, Horgen
Switzerland
Tel: 01-7279797
FAX: 01-7279798

Sales Poland
Targowa 35/61
03-728 Warszawa
Tel: 022-619 00 49
FAX: 022-619 00 49
Mobile Tel: 0501-27 29 55

Sales Russia
EMCG Material Handling
Equipment
Moscow
Tel: 095-795-2400
FAX: 095-795-2475
Email: emcg@emcg.ru

Cascade Japan Ltd.
5-5-41,
Torikai Kami
Settsu, Osaka
Japan, 566
Tel: 81-726-53-3490
FAX: 81-726-53-3497

Cascade Korea
121B 9L Namdong Ind.
Complex, 691-8 Gojan-Dong
Namdong-Ku
Inchon, 405-310 Korea
Tel: 82-32-821-2051
FAX: 82-32-821-2055

Cascade Australia
1445 Ipswich Road
Rocklea, QLD 4107
Australia
Tel: 1-800-227-223
FAX: 617-3373-7333

Cascade New Zealand
15 Ra Ora Drive
East Tamaki, Auckland
New Zealand
Tel: 64-9-273-9136
FAX: 64-9-273-9137

Cascade-Xiamen
No. 668 Yangguang Rd.
Xinyang Industrial Zone
Haicang, Xiamen City
Fujian Province
P.R. China 361026
Tel: 86-592-651-2500
FAX: 86-592-651-2571

**Sunstream Industries
Pte Ltd.**
No. 3 Tuas Link 1
2263
Singapore
Tel: 65-6863-3488
FAX: 65-6863-1368

**Cascade do Brasil
Distribuidora de Garras
e Garfos LTDA**
Av. General Valdomiro
de Lima 43
Jabaquara - Sao Paulo - S.P.
Brasil CEP 04344-070
Tel: 55-11-5016-2484
Fax: 55-11-5013-2809

