



# Parts Manual

---

Model \_\_\_\_\_ Paper Roll Clamp

Serial Number \_\_\_\_\_ 66G-RDP-141

---

**cascade**®  
**corporation**

**For Technical Assistance call:** 800-227-2233, Fax: 888-329-8207

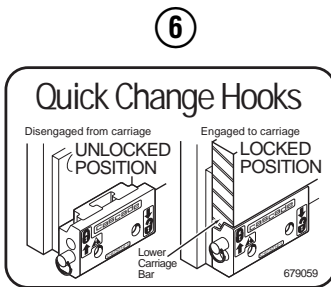
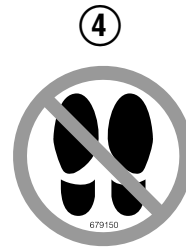
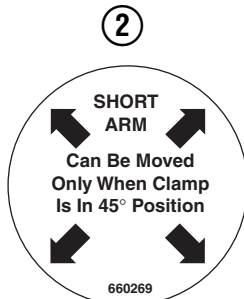
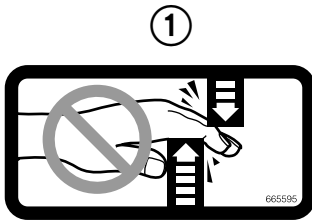
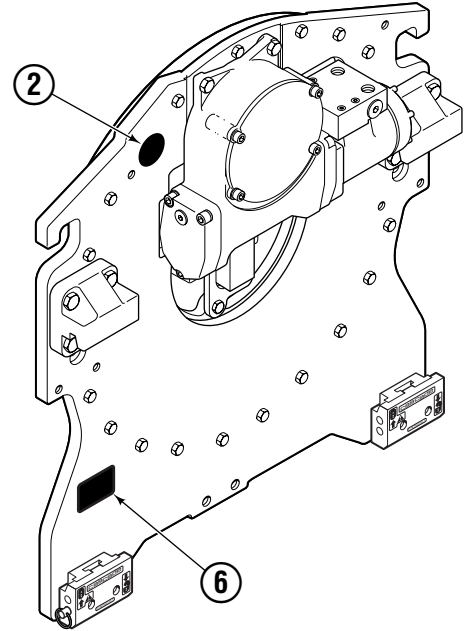
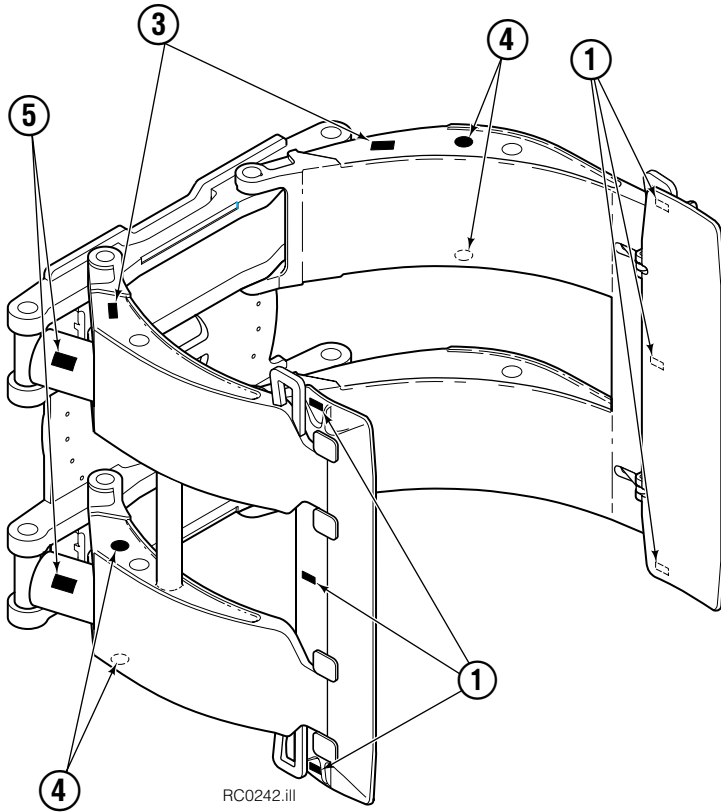
**To Order Parts call:** 888-227-2233, Fax: 888-329-0234

**OR**

**Write:** Cascade Corporation, P.O. Box 20187, Portland, OR 97220

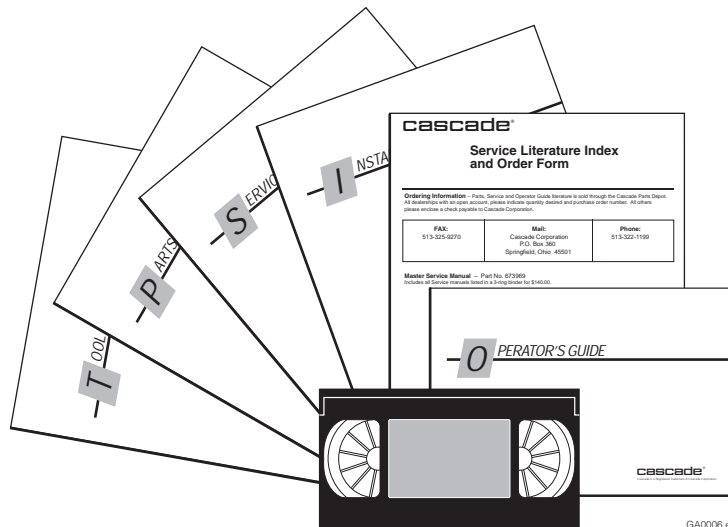
**Internet:** [www.cascorp.com](http://www.cascorp.com)

# Decals



66G				
REF	QTY	PART NO.	DESCRIPTION	
1	4	665595	No Hand Hold Decal	
2	2	660269	Short Arm Rotation Position Decal	
3	6	656038	Caution Decal	
4	4	679150	No Step Decal	
5	4	665677	Trapped Pressure Decal	
6	1	679059	Quick-Change Hook Decal	
7	1	671167	Oil Fill Tag (not shown)	
		212926	Decal Kit, (items 1-7)	

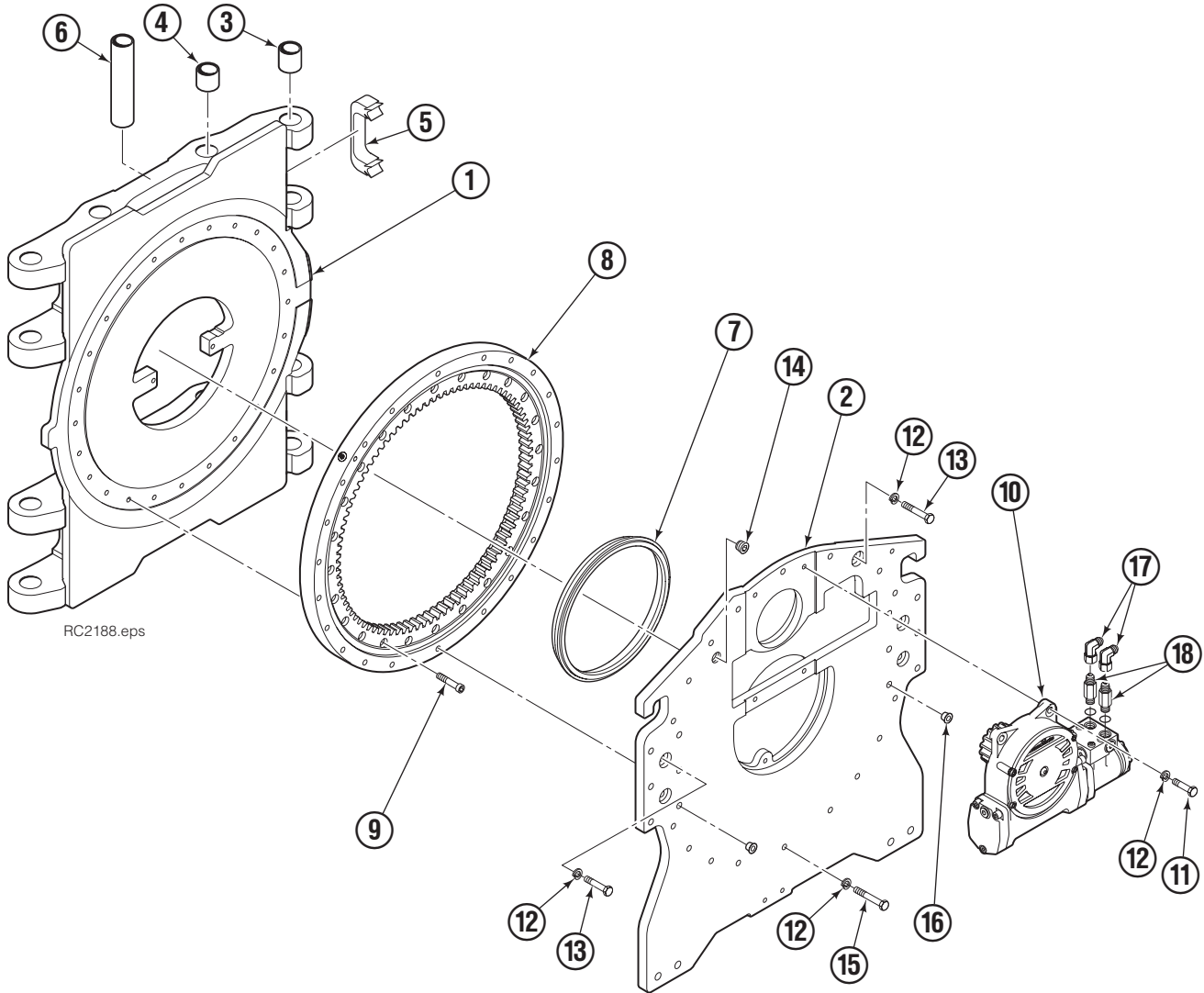
# Publications



GA0006.eps

66G	
PART NO.	DESCRIPTION
	Parts Manual
213744	Service Manual
210135	Operator's Guide
212420	Installation Instructions - Fixed Frame
677555	Driver Training Video - VHS
679929	Tool Catalog
673964	Literature Index Order Form

# Frame Group



66G							
REF	QTY	PART NO.	DESCRIPTION	REF	QTY	PART NO.	DESCRIPTION
		6019357	Frame Group – 45 in. ▲	10	1	6001026	Drive Group - 2.2 c.i. Motor ●
1	1	6019358	Frame – 45 in. ▲	11	4	211689	Capscrew, M12 x 30
2	1	6041257	Baseplate w/o Stop	12	28	683822	Lockwasher, M12
3	8	211718	Bearing	13	6	209684	Capscrew, M12 x 50
4	8	211717	Bearing	14	1	6605	Plug
5	4	211712	Hose Guard	15	18	213900	Capscrew, M12 x 60
6	4	209987	Spacer	16	2	—	Plug
7	1	209944	Seal	17	2	605761	◆ Fitting, 8-8
8	1	213983	Bearing Assembly	18	2	611295	◆ Fitting, 8-8
9	24	213902	Capscrew, M12 x 45	19	1	669344	Stop Block Kit (not shown)

▲ Maximum roll handling capacity.

● See Drive Group page for parts breakdown.

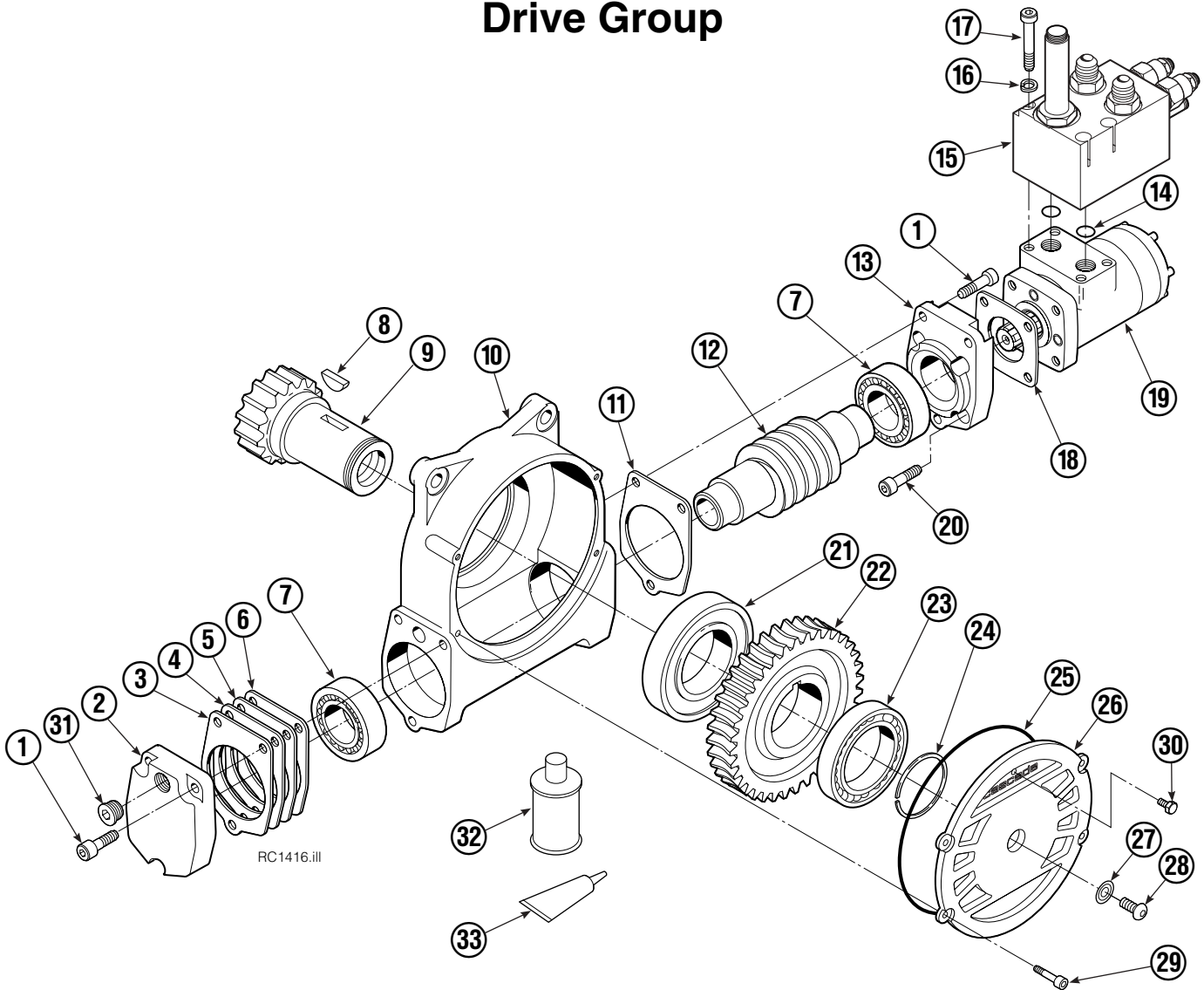
Reference: S-4650, S-4655, S-4733.

◆ Included in Fitting Group 399250.

Rotator & Baseplate Group 6041256.

Common Parts 213986.

# Drive Group



66G							
REF	QTY	PART NO.	DESCRIPTION	REF	QTY	PART NO.	DESCRIPTION
		6001026	Drive Group with 2.2 c.i. Motor	19	1	210139	Drive Motor – 2.2 c.i. ▲
1	6	769570	Capscrew, M12 x 25	20	4	4468	Capscrew, 3/8 NC x .75 GR8
2	1	676855	Cover	21	1	670580	Bearing
3	●	674513	Shim – .005" (blue)	22	1	675609	Worm Gear
4	●	670574	Shim – .010" (brown)	23	1	670581	Bearing
5	●	671757	Shim – .015" (pink)	24	1	7214	Snap Ring
6	●	671758	Shim – .020" (yellow)	25	1	643423	O-Ring
7	2	670579	Bearing	26	1	775552	Cover
8	1	670582	Key	27	1	783609	Seal
9	1	670506	Pinion	28	1	783608	Capscrew, M12 x 16
10	1	775551	Housing	29	4	200882	Capscrew, M8 x 20
11	1	686465	Gasket	30	1	644010	Relief Fitting
12	1	675608	Worm	31	1	604510	Fitting, 6
13	1	775553	Adapter	32	1	656300	Gear Box Lube – 48 oz.
14	2	2705	O-Ring	33	1	668184	Sealant
15	1	6001035	Valve Assembly without Coils ◆			670578	Shim Service Kit (items 3-6,25,33)
16	4	6444	Lockwasher			675637	Bearing Service Kit (items 21 & 33)
17	4	607060	Capscrew, 5/16 NC x 2.00 GR8			675638	Bearing Service Kit (items 3-7,25)
18	1	670575	Gasket			212919	Motor Kit-2.2 (item 11,14,18,19,20,33)

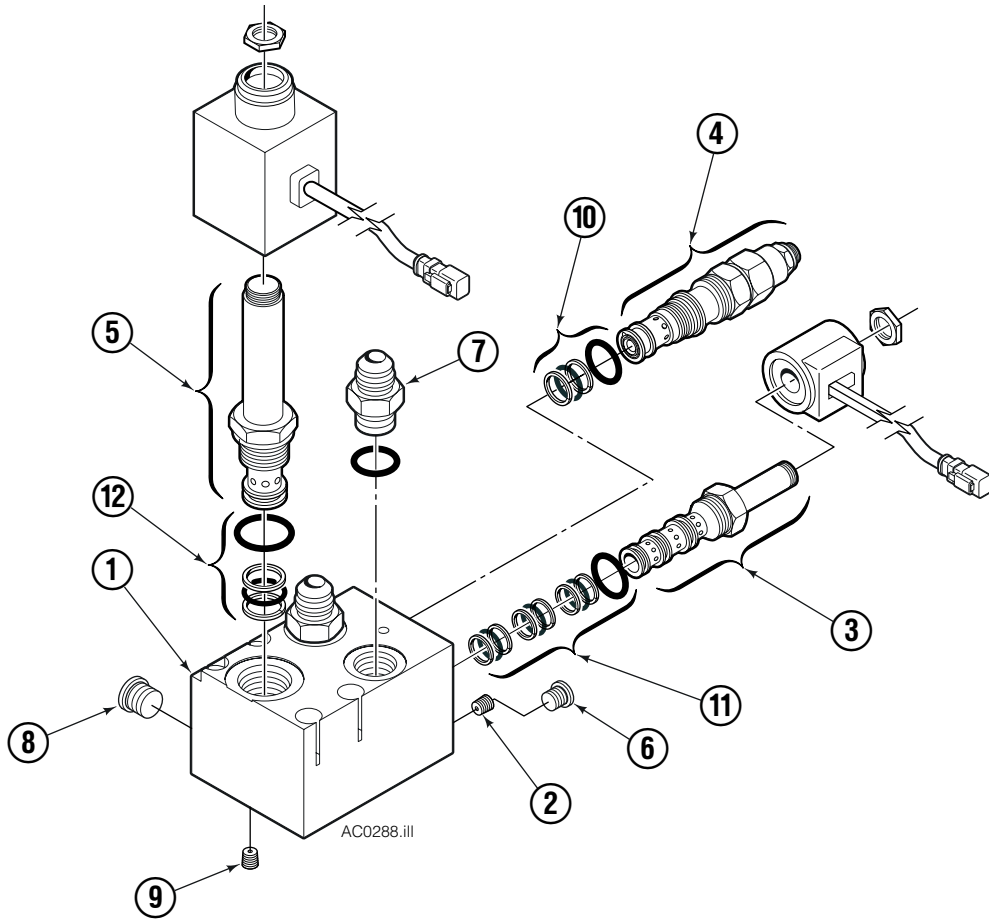
● Quantity as required.

◆ See Valve page for parts breakdown.

▲ See Drive Motor page for parts breakdown.

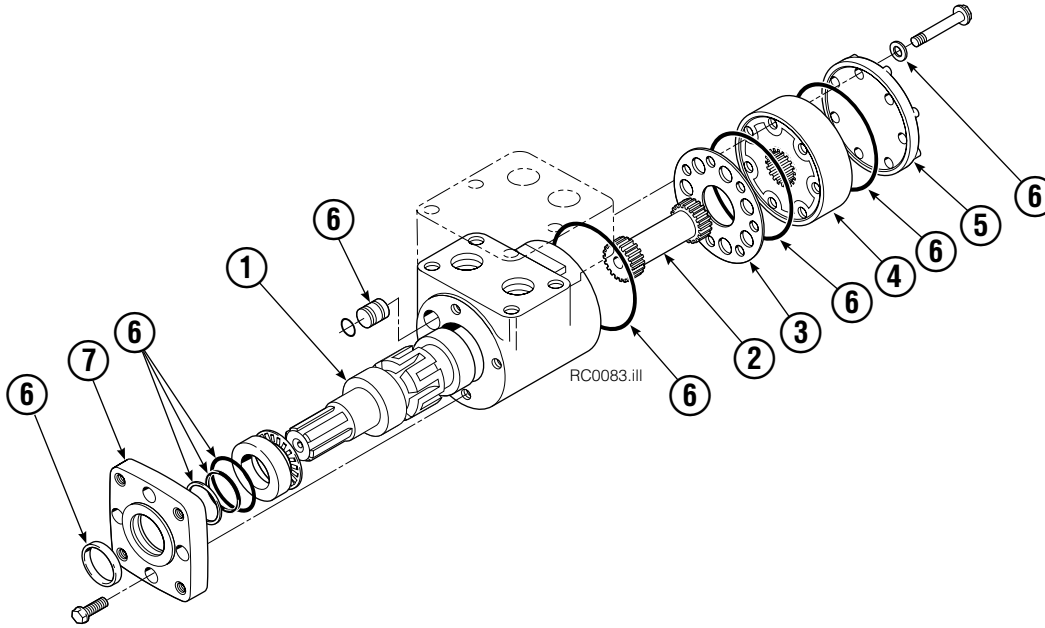
Reference: Common Parts 795490, SK-6864.

# Solenoid Valve



REF	QTY	PART NO.	DESCRIPTION
		6001035	Valve Assembly without Coils
1	1	220565	Valve Body
2	4	220641	Orifice
3	1	220627	Solenoid Valve
4	2	6003173	Valve
5	1	221722	Solenoid Valve
6	2	663694	Fitting, 3
7	3	601377	Fitting, 8
8	3	604510	Fitting, 6
9	3	228698	Orifice
10	2	667516	Service Kit
11	1	221049	Service Kit
12	1	6031791	Service Kit

# Drive Motor

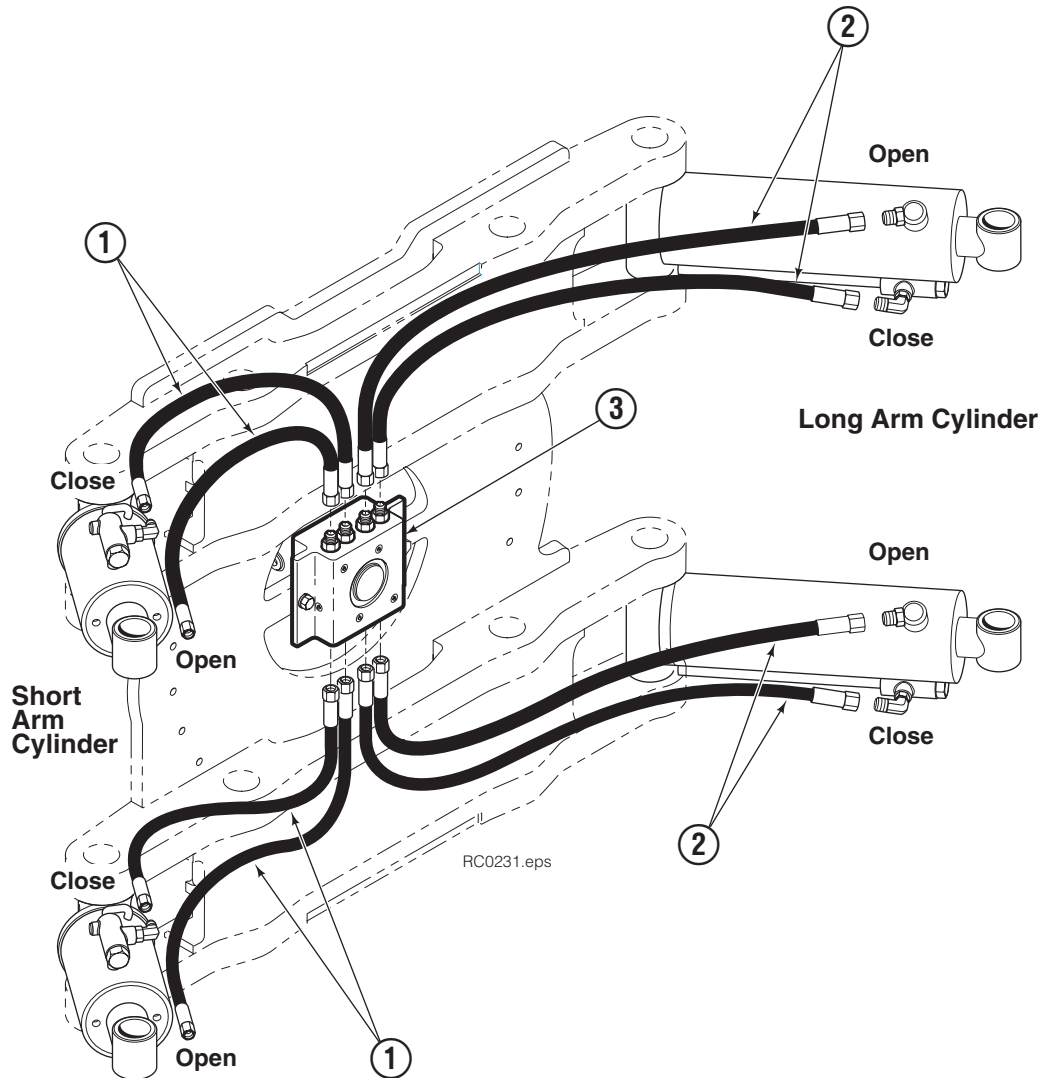


REF	QTY	PART NO.	DESCRIPTION
		210139	Drive Motor
1	1	675478	Shaft
2	1	675477	Drive
3	1	211528	Spacer Plate
4	1	210137	Geroter Set
5	1	211527	End Cap
6	1	206405	Service Kit ●
7	1	685090	Flange

Cascade provides service replacement parts for the listed parts only. Due to cost, if others parts need replacement, the complete Drive Motor should be replaced.

- Compatible with water glycol based hydraulic fluids.

# Hose Group Positioned Short Arm



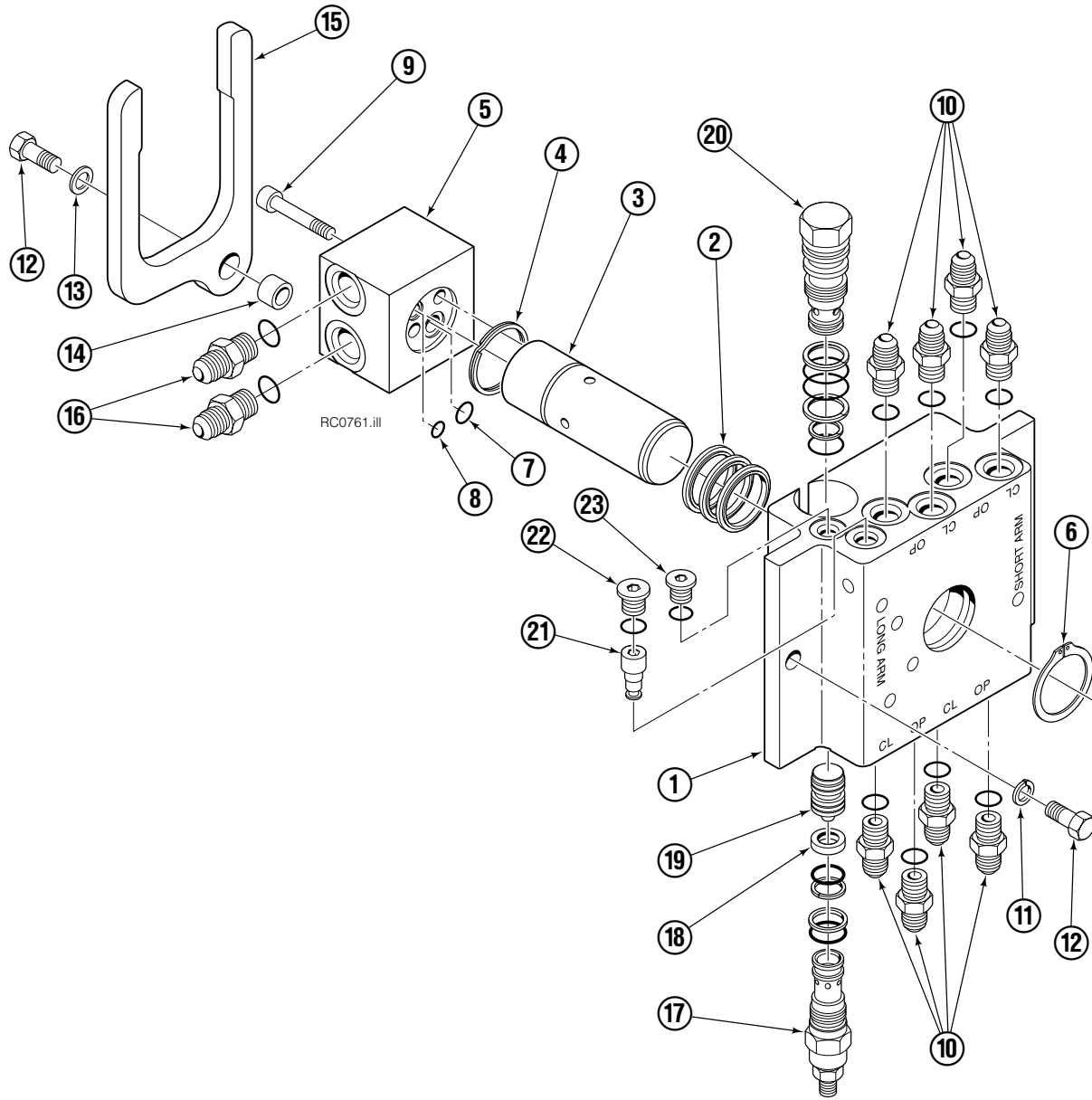
66G			
REF	QTY	PART NO.	DESCRIPTION
		213966	Hose Group – 51 in. ■
1	4	213988	Hose, 31.10 in.
2	4	213989	Hose, 23.50 in.
3	1	◆	Revolving Connection

■ Maximum roll handling capacity.

◆ See Revolving Connection page for parts breakdown.

Reference: S-4192, S-4193.

# Revolving Connection Split Long Arm / Fixed Frame

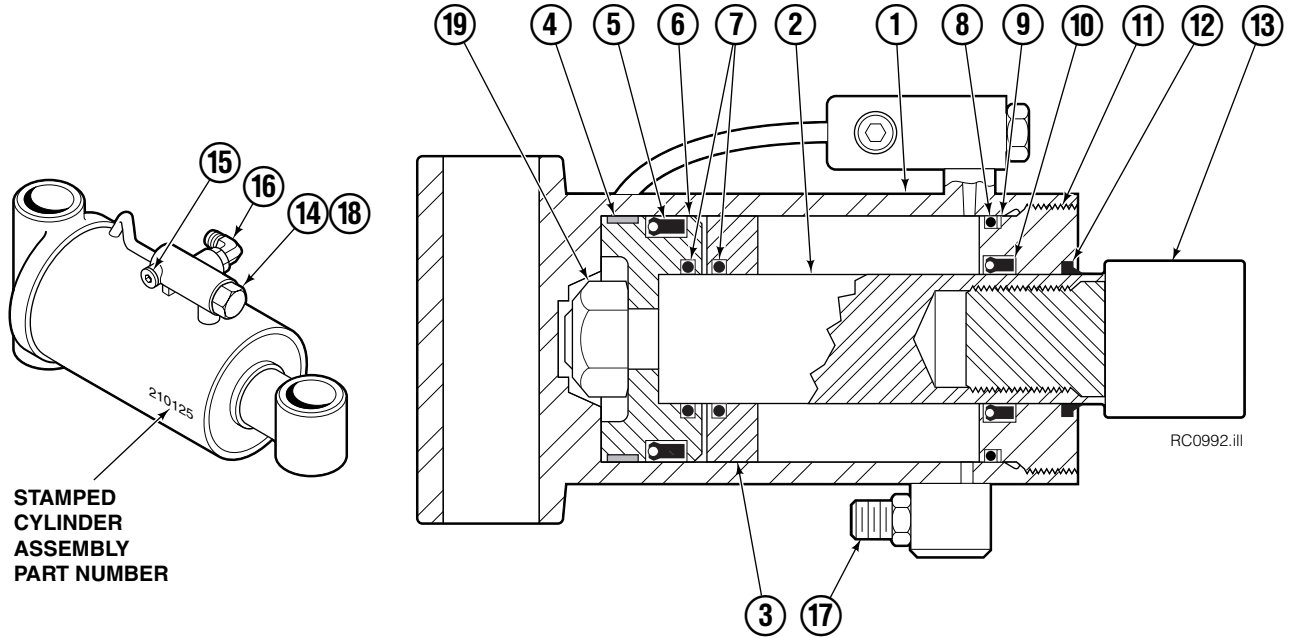


66G							
REF	QTY	PART NO.	DESCRIPTION	REF	QTY	PART NO.	DESCRIPTION
		6024039	Rev. Connection – Pos. Short Arm	12	3	215480	Capscrew, M10 x 25
1	1	6025059	Body	13	1	206322	Washer, M10
2	3	214649	◆ Seal	14	1	212725	Spacer
3	1	6025608	Shaft	15	1	211909	End Block Retainer
4	1	7341	◆ Retaining Ring	16	2	601377	Fitting, 8-8
5	1	227316	End Block	17	1	227331	Sequence Valve
6	1	3138	◆ Retaining Ring	18	1	227318	◆ Quad Ring
7	1	564448	◆ O-ring	19	1	227320	Spool
8	1	684587	◆ O-ring	20	1	6024293	Flow Divider Cartridge
9	2	766123	◆ Capscrew, M8 x 50	21	1	220865	Shuttle Check
10	8	604511	Fitting, 6-6	22	1	609234	Fitting
11	3	681238	Lockwasher, M10	23	1	663694	Fitting

Reference: Revolving Connection Assembly 6025607.

◆ Included in Seal Kit 227665.

# Cylinder Assembly - Long Arm

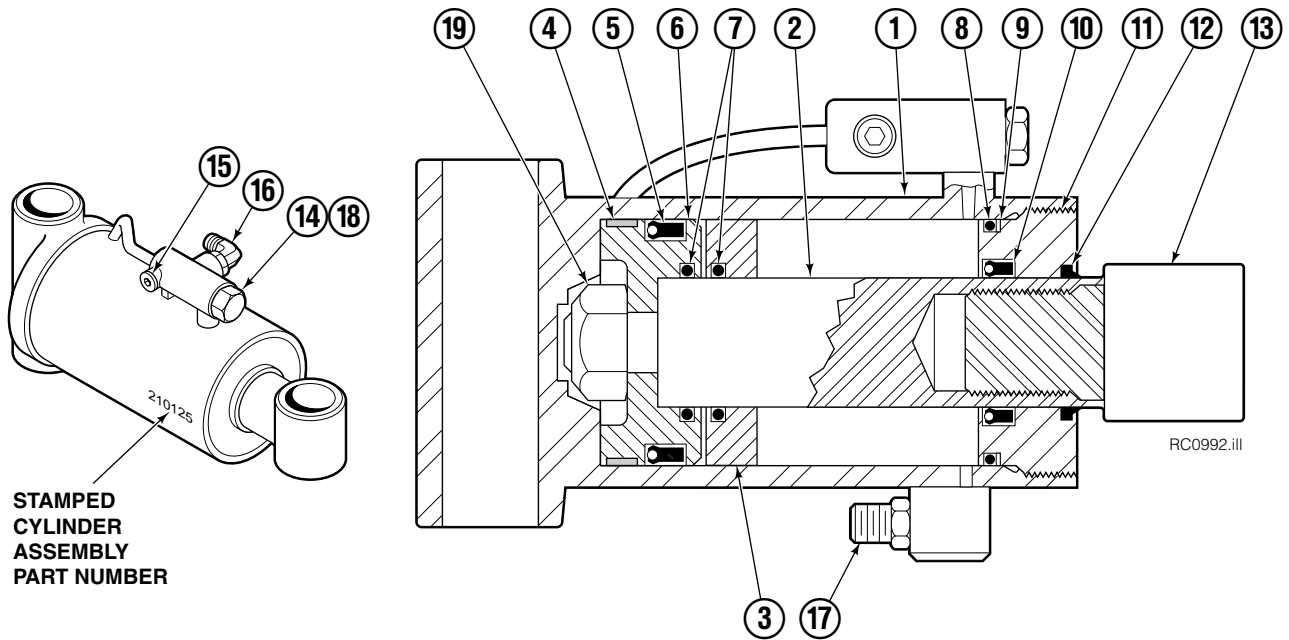


STAMPED  
CYLINDER  
ASSEMBLY  
PART NUMBER

66G							
REF	QTY	PART NO.	DESCRIPTION	REF	QTY	PART NO.	DESCRIPTION
		6063404	Cylinder Assembly	10	1	564442	◆ Seal
1	1	4195-357	Shell	11	1	209763	Retainer
2	1	4130-341	Rod	12	1	564443	◆ Wiper
3	1	6020077	Spacer	13	1	209764	Rod End
4	1	211295	◆ Wear Ring	14	1	659058	Check Valve
5	1	564902	◆ Seal	15	1	609234	Fitting, 4
6	1	211292	Piston	16	1	601676	Fitting, 6-6
7	1	210087	◆ O-Ring	17	1	604511	Fitting, 6-6
8	1	564445	◆ O-Ring	18	1	667516	Check Valve Service Kit
9	1	564446	◆ Back-up Ring	19	1	560997	Nut

◆ Included in Service Kit 210133.  
Reference: S-4454, S-4460.

# Cylinders



60G / 66G			
REF	QTY	Short Arm	
		45 in. ■	
REF	QTY	PART NO.	DESCRIPTION
		6020080	Cylinder Assembly
1	1	4195-166	Shell
2	1	4130-150	Rod
3	1	--	Spacer

■ Maximum roll handling capacity.

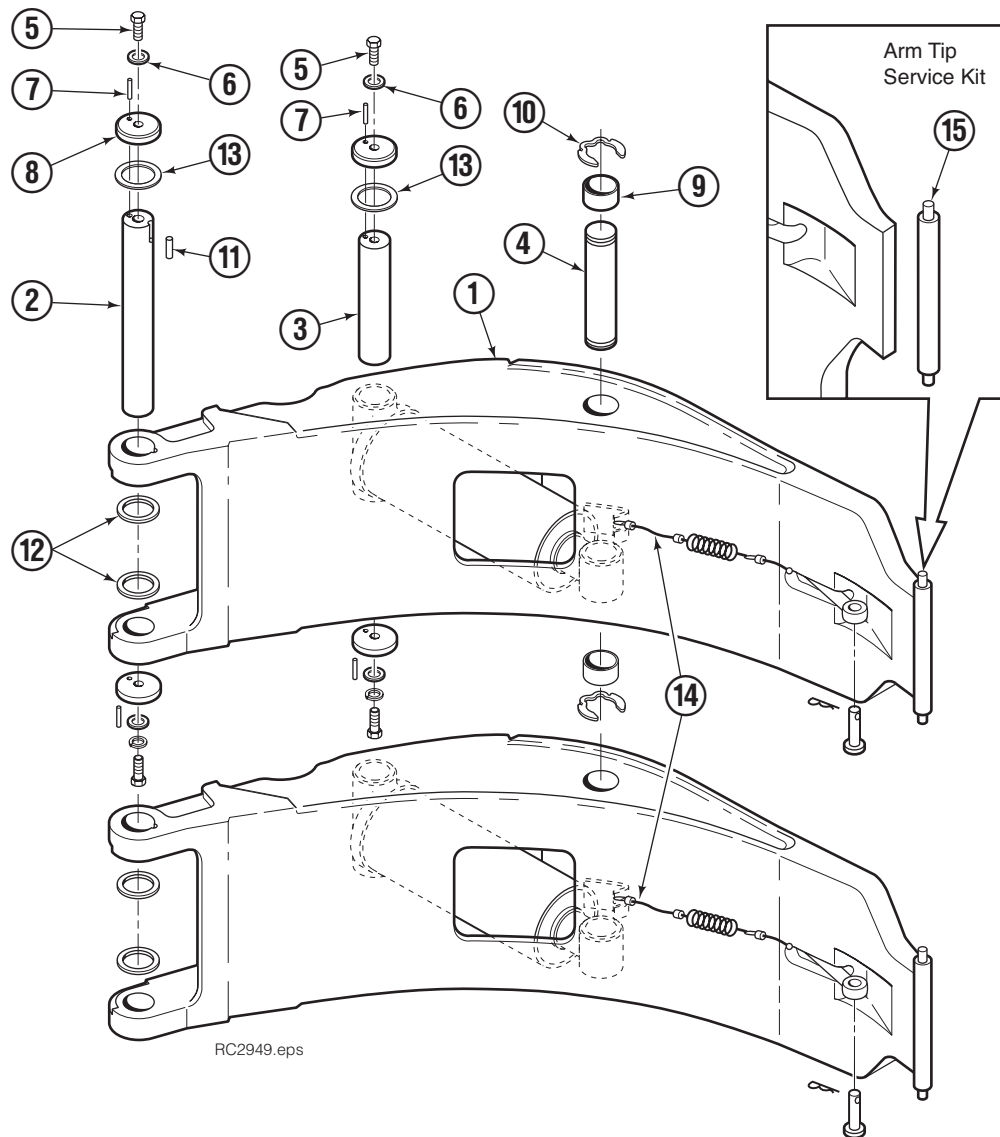
## Common Parts

REF	QTY	PART NO.	DESCRIPTION	REF	QTY	PART NO.	DESCRIPTION
4	1	211295	▲ Wear Ring	13	1	209764	Rod Eye
5	1	564902	▲ Seal	14	1	659058	Check Valve
6	1	211292	Piston	15	1	609234	Fitting, 4
7	2	210087	▲ O-Ring	16	1	601676	Fitting, 6-6
8	1	564445	▲ O-Ring	17	1	604511	Fitting, 6-6
9	1	564446	▲ Back-Up Ring	18	1	667516	Check Valve Service Kit
10	1	564442	▲ Seal	19	1	560997	Nut
11	1	209763	Retainer			210133	Cylinder Service Kit
12	1	564443	▲ Wiper				

▲ Included In Service Kit 210133.

Reference: S-4454, S-4460.

# Split Long Arm Group

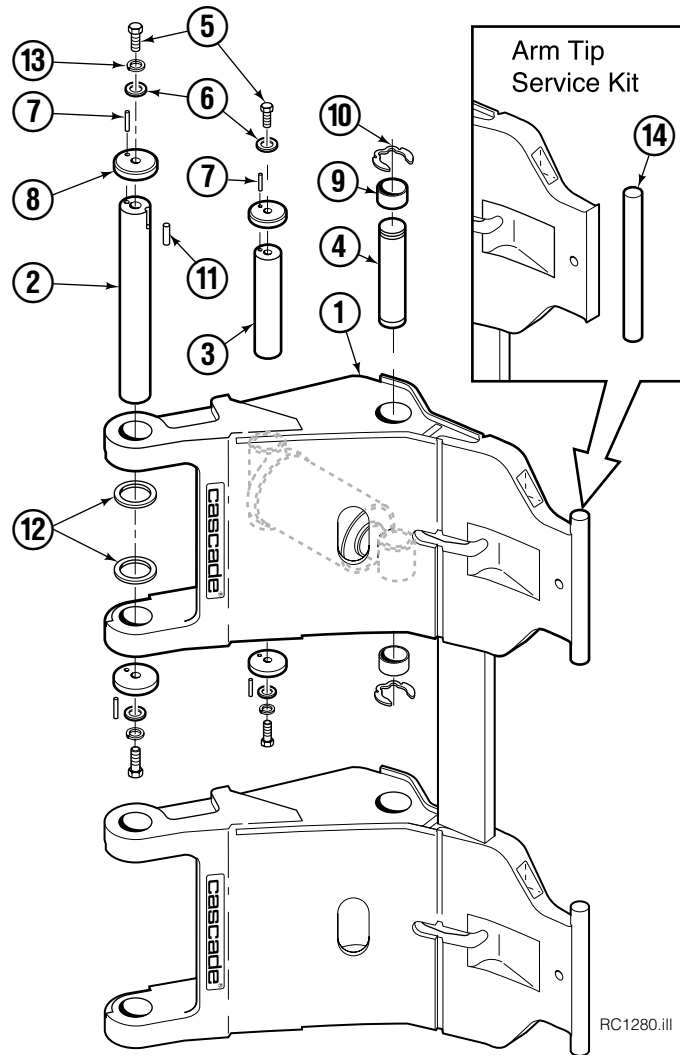


RC2949.eps

66G							
REF	QTY	PART NO.	DESCRIPTION	REF	QTY	PART NO.	DESCRIPTION
		6063403	Long Arm Group – 45 in. ■	8	8	6017339	Cap
1	2	6063338	Long Arm	9	4	210080	Bearing
2	2	6017336	Arm Pivot Pin	10	4	209986	Retaining Ring
3	2	6023679	Cylinder Pivot Pin	11	2	212382	Dowel Pin
4	2	4175-150	Cylinder Rod Pivot Pin	12	16	209941	Shim (.062 in.)
5	8	3007512	Capscrew, M12 x 25	13	8	213029	Shim
6	8	209019	Washer, M12	14	2	4182-040	Cable
7	8	209776	Dowel Pin	15	1	212902	Arm Tip Service Kit

■ Maximum roll handling capacity.

# Short Arm



66G			
REF	QTY	45 in. ■	DESCRIPTION
		PART NO.	
		6019368	Arm Group w/o Guard
1	1	6019369	Short Arm w/o Guard

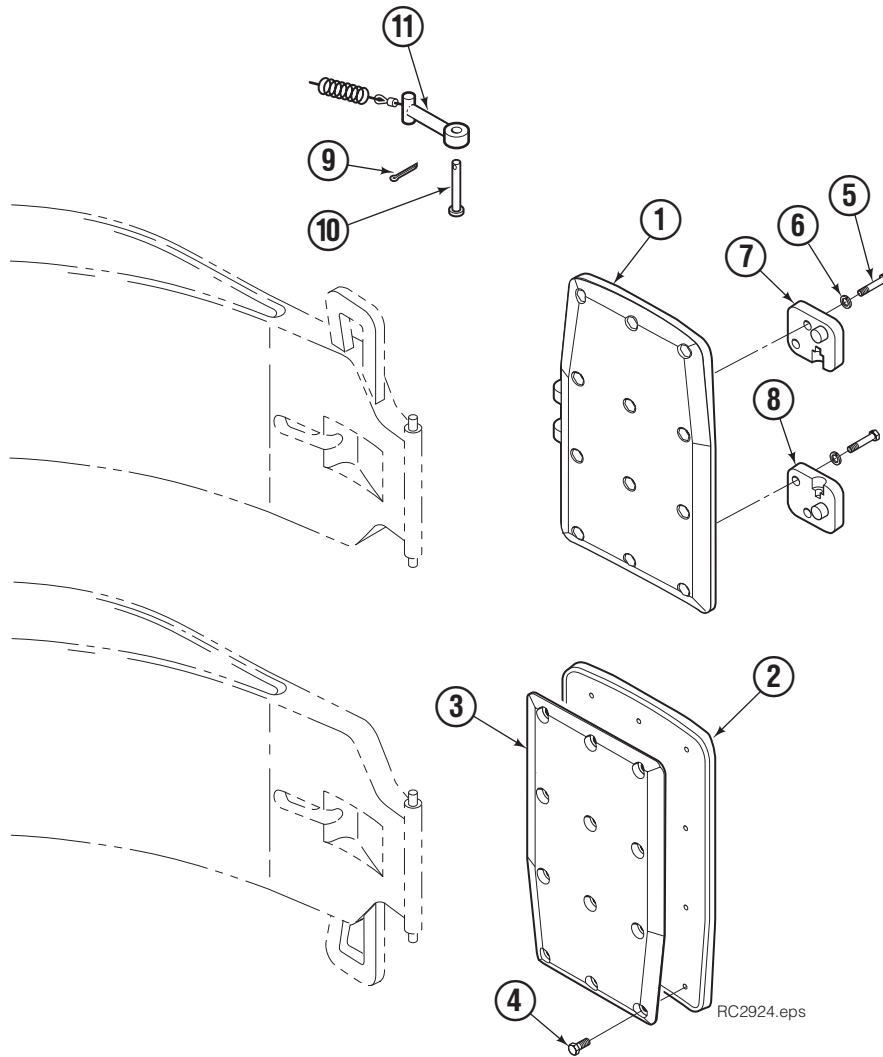
■ Maximum roll handling capacity.

## Common Parts

REF	QTY	PART NO.	DESCRIPTION	REF	QTY	PART NO.	DESCRIPTION
		212933	Common Parts Group	11	2	212382	Dowel Pin, 8x16 mm
2	2	209982	Arm Pivot Pin	12	16	209941	Shim - .062 in.
3	2	209983	Cylinder Pivot Pin	13	8	681238	Lockwasher
4	2	4175-150	Cylinder Rod Pivot Pin	14	1	212902	Arm Tip Service Kit
5	8	215480	Capscrew, M10x1.5x25			212905	Bearing Service Kit (items 9, 10)
6	8	209021	Washer, M10			212906	Pin Service Kit (items 2-8, 10-13)
7	8	769009	Roll Pin			212907	Pin Service Kit (items 2, 5-8, 11, 13)
8	8	209985	Cap			212908	Pin Service Kit (items 3, 5-8)
9	4	210080	Bearing			212909	Pin Service Kit (items 4, 9, 10)
10	4	209986	Retaining Ring				

Reference: S-4172.

# Contact Pad Group – Split Long Arm



66G							
REF	QTY	PART NO.	DESCRIPTION	REF	QTY	PART NO.	DESCRIPTION
		6063438	Contact Pad Group	6	8	681473	Lockwasher, M12
1	1	6063447	▲ Contact Pad – RH ■	7	2	211997	Retainer – RH ■
2	1	6063440	● Contact Pad – LH ■	8	2	211998	Retainer – LH ■
3	1	6063418	▲ ● Rubber Pad	9	2	6525	Cotter Pin
4	12	213543	▲ ● Capscrew, M8 x 10	10	2	674265	Clevis Pin
5	8	767810	Capscrew, M12 x 25	11	2	209916	Link

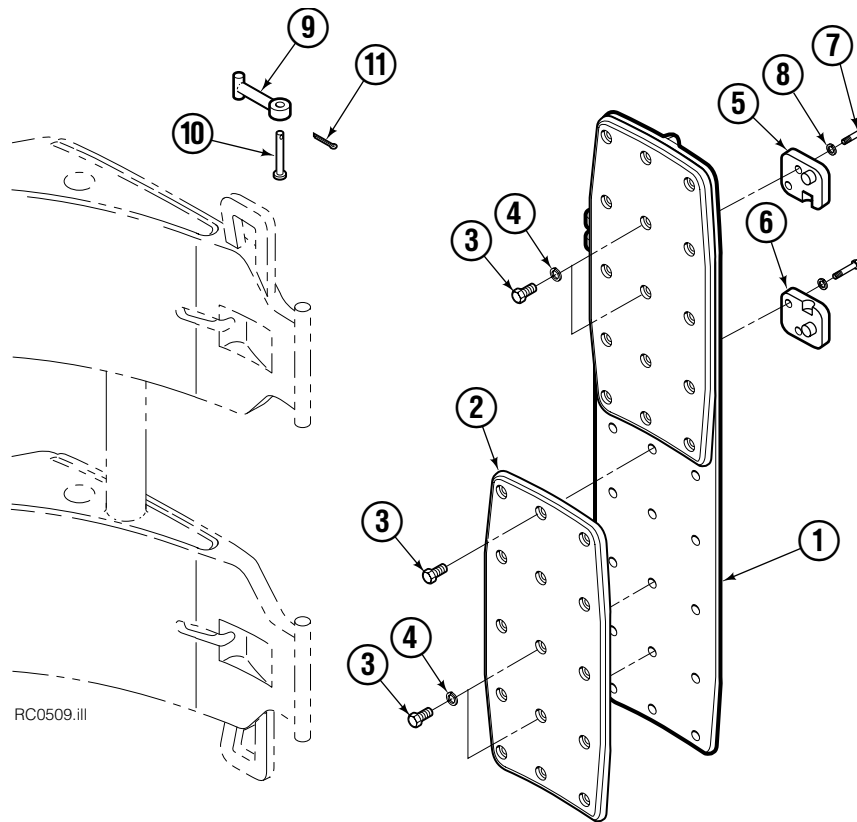
▲ Included in Contact Pad Assembly 6063487.

● Included in Contact Pad Assembly 6063486.

■ Driver's view, clamp in horizontal position, Long Arm up.

Reference: 212934 Common Parts, S-4176.

# Pad Group – Short Arm



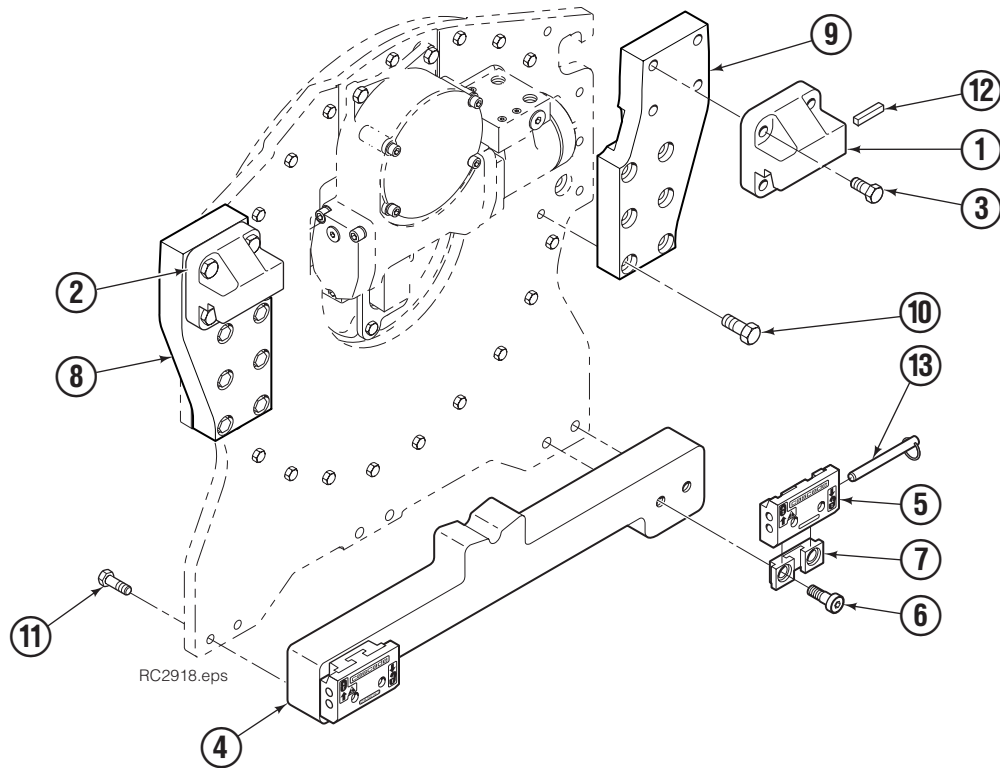
66G			
REF	QTY	PART NO.	DESCRIPTION
		6019363	Contact Pad Group
1	1	6019365	Contact Pad
2	2	209921	Bolt-On Rubber
3	30	213543	Cap screw, M8
4		-	Lockwasher, M8
5	2	209904	■ Retainer – RH ▲
6	2	209905	■ Retainer – LH ▲
7	8	767810	■ Cap screw, M12
8	8	681473	■ Lockwasher, M12
9	2	209909	■ Link
10	2	674265	■ Clevis Pin
11	2	6525	■ Cotter Pin

▲ Driver's view, clamp in horizontal position, Short Arm up.

■ Included in Short Arm Common Parts Group 212935.

Reference: S-4177.

# Mounting Group - Quick-Disconnect



Class IV, 0°			
REF	QTY	PART NO.	DESCRIPTION
		6069593	Mounting Group
1	1	675061	Upper Hook - RH
2	1	684877	Upper Hook - LH
3	8	679082	Capscrew, M20 x 35
4	1	390449	Center Spacer
5	2	679829	Lower Hook
6	4	769582	Capscrew, M20 x 50
7	2	679830	Guide
8	1	6022324	Spacer - LH
9	1	6022325	Spacer - RH
10	12	223454	Capscrew, M16 x 55
11	4	779011	Capscrew, M16 x 40
12	1	670704	Stop Kit
13	2	679831	Pin

Reference: SK-9527.



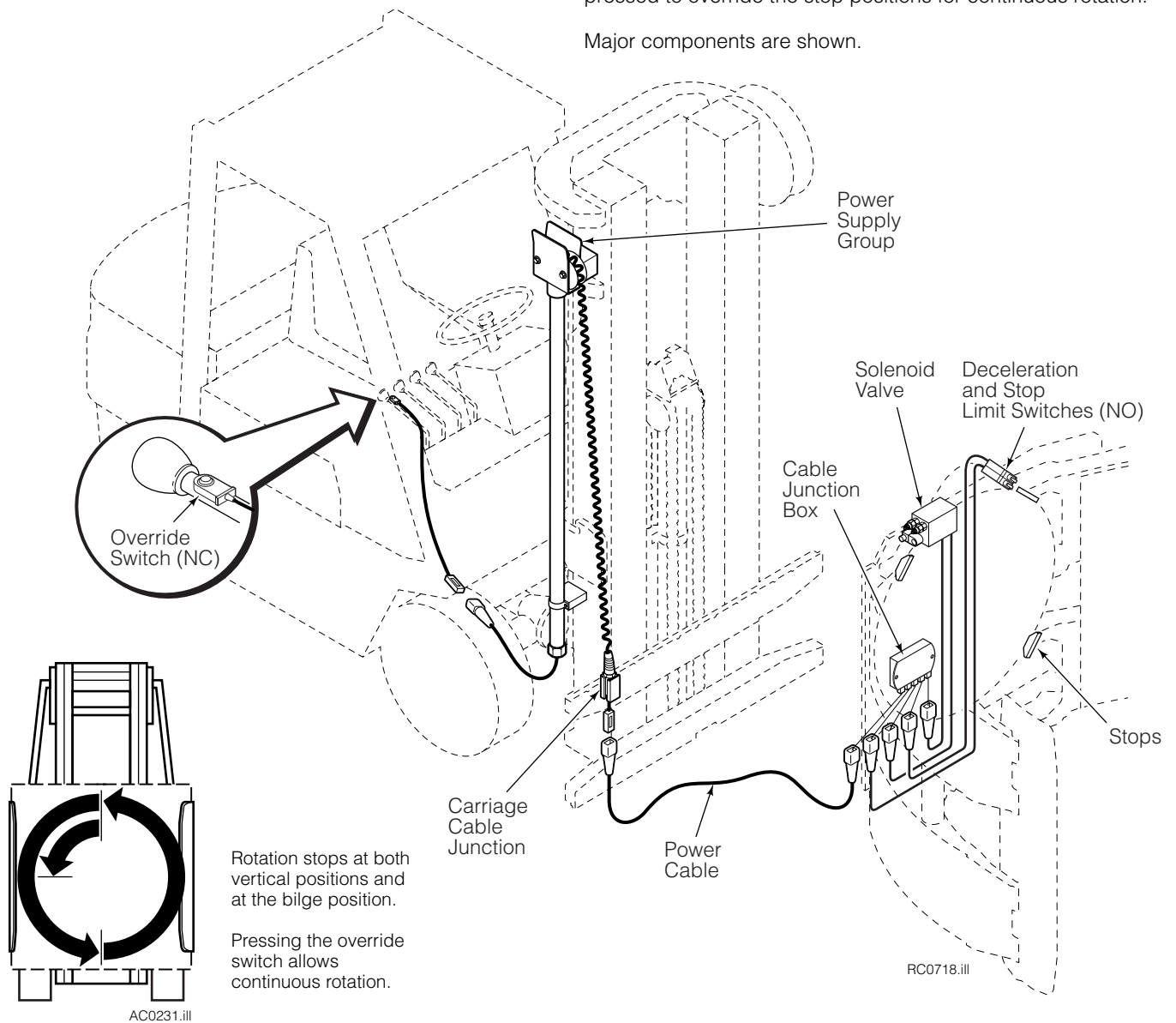
# Installation Instructions

## Electronic Rotational Control Group

This Manual provides installation instructions for Cascade Electronic Rotational Control Kits. Rotational Control provides accurate stops during rotation to position the attachment arms at true vertical or bilge position to reduce product damage of misclamped loads. An electrical supply

circuit such as Cascade's Power Supply (recommended) or Cable Reel is required to provide an electrical connection between the Electronic Rotational Control on the attachment and the truck electrical system. A normally closed pushbutton switch mounted on the truck ROTATE control lever is depressed to override the stop positions for continuous rotation.

Major components are shown.



**cascade®**  
corporation

**For Technical Support . . .**

Call: 1-800-227-2233 Fax: 1-888-329-8207  
Internet: [www.cascorp.com](http://www.cascorp.com)  
Write: Cascade Corporation, PO Box 20187, Portland, OR 97294

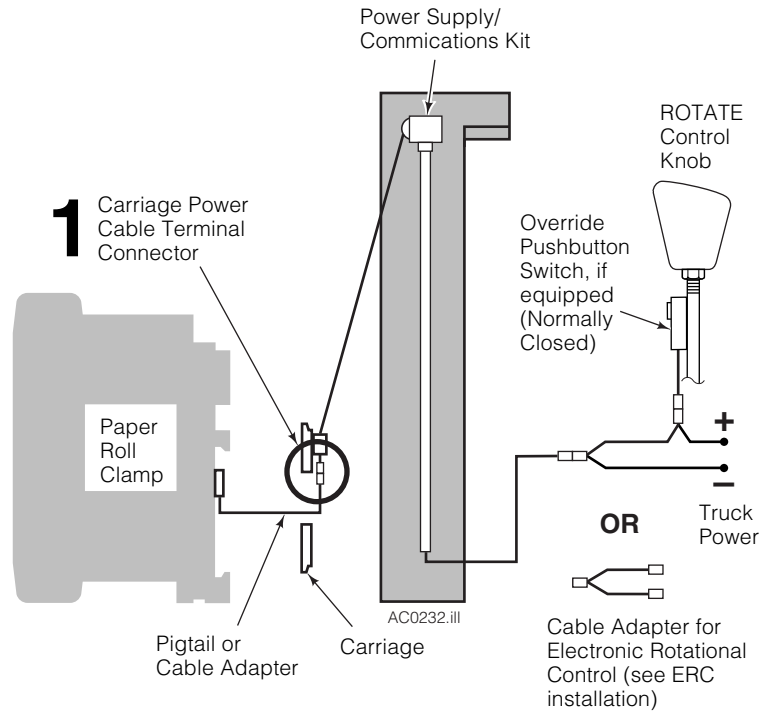
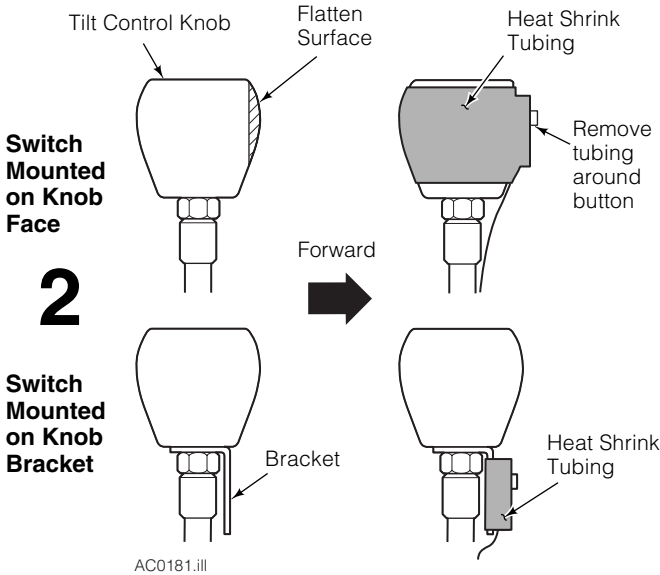
**To Order Parts . . .**

Call: 1-888-227-2233 Fax: 1-888-329-0234  
Internet: [www.cascorp.com](http://www.cascorp.com)  
Write: Cascade Corporation, 2501 Sheridan Ave., Springfield, OH 45505

# Cable, Switch Installation

- 1 Connect the power cable from the Electronic Rotational Control (ERC) enclosure on the back of the attachment to the power supply cable end at the truck carriage.
- 2 Install pushbutton switch on ROTATE control lever.

**NOTE:** This installation shows connection to Cascade's Power Supply/Communications Kit 228719 or 6001137 which includes components for over-the-mast electrical supply from the power cable to the carriage cable connection. See Installation Instructions 228179.



# Operation and Adjustment

- 1 Test the installation before putting the truck in service. When rotating, attachment travel should stop at the vertical and bilge handling positions. Wait 3 seconds to rotate after stopping **OR** press the rotate override button to continue rotating.

- If rotation **stops** at the vertical or bilge position, continue with step 2.
- If rotation **stops momentarily and then continues** at the vertical or bilge positions:

**A** Reduce the hydraulic input pressure for the Rotate function.

**OR**

**B** Adjust both counterbalance cartridges CCW in 1/2 turn increments until rotation stop at the vertical and bilge position.

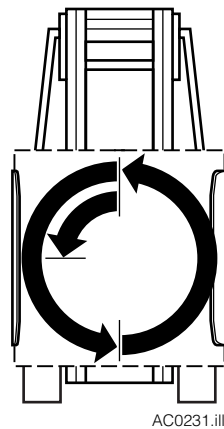
- If rotation **does not stop** at the vertical or bilge positions:

**A** Inspect the wiring installation. Look for loose connections or pinched cables.

**B** The limit switch end rollers are not fully engaging the deceleration ramp and stop capscrew at the vertical or bilge position. Adjust the limit switch actuators to engage the ramp and stop capscrew. The ramp and stop can also be adjusted for precision of the stop position. The stop capscrew height is also adjustable.

- 2 To continue rotation, wait 3 seconds after stopping or the rotate override button must be pressed to continue rotation.

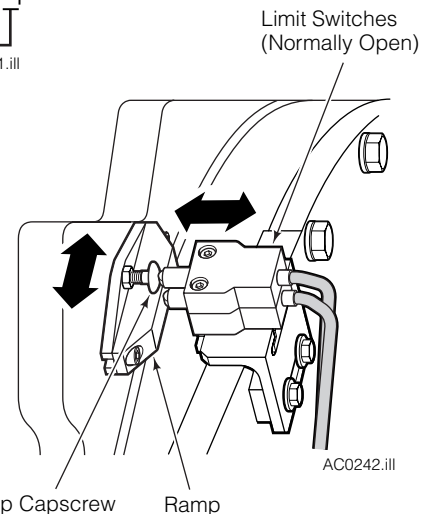
To rotate without stopping, press the override button.



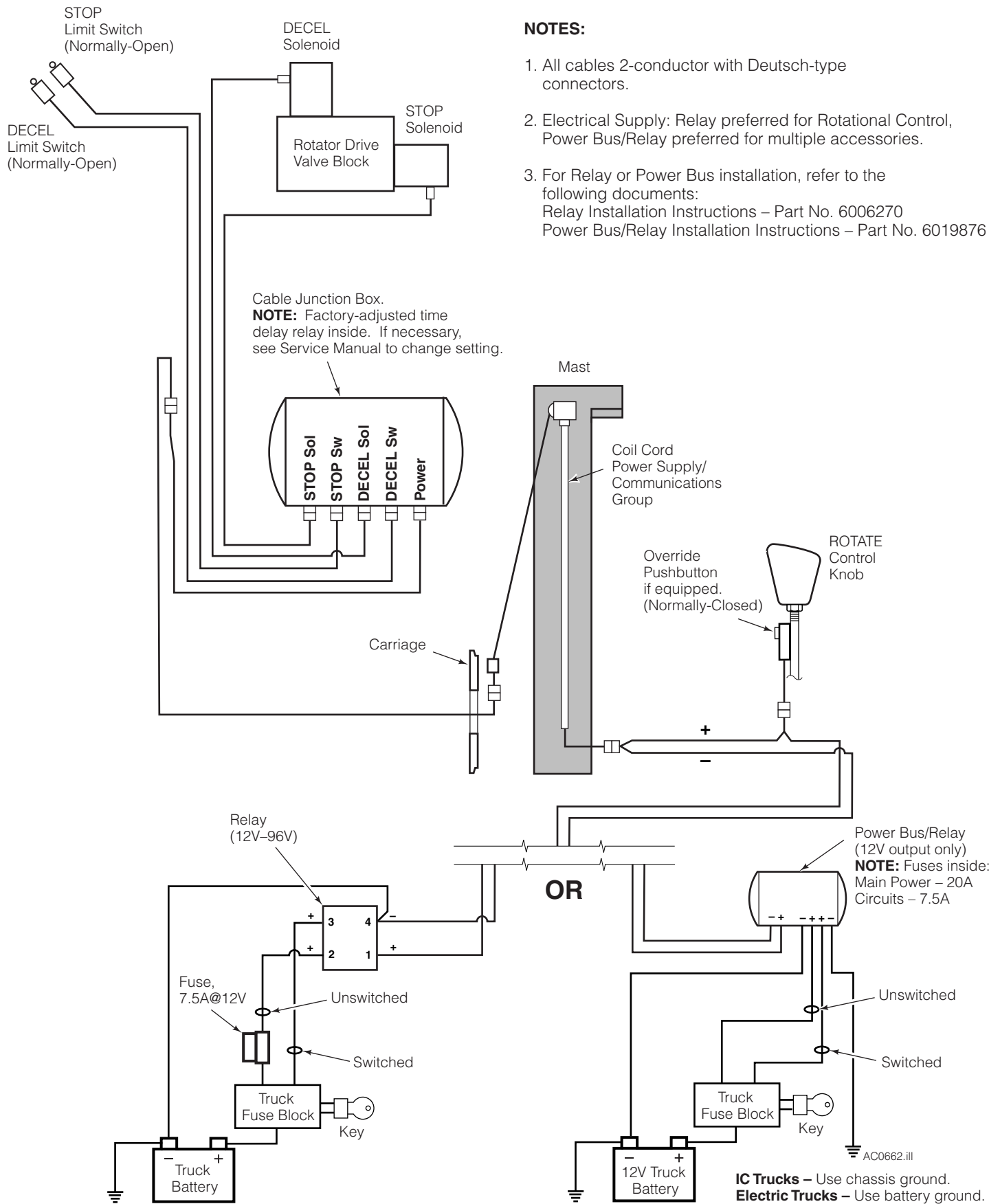
Rotation stops at both vertical positions and at the bilge position.

Pressing the override switch allows continuous rotation.

Wait 3 seconds or press override button to continue rotating.



# Rotational Control Electrical Hookup



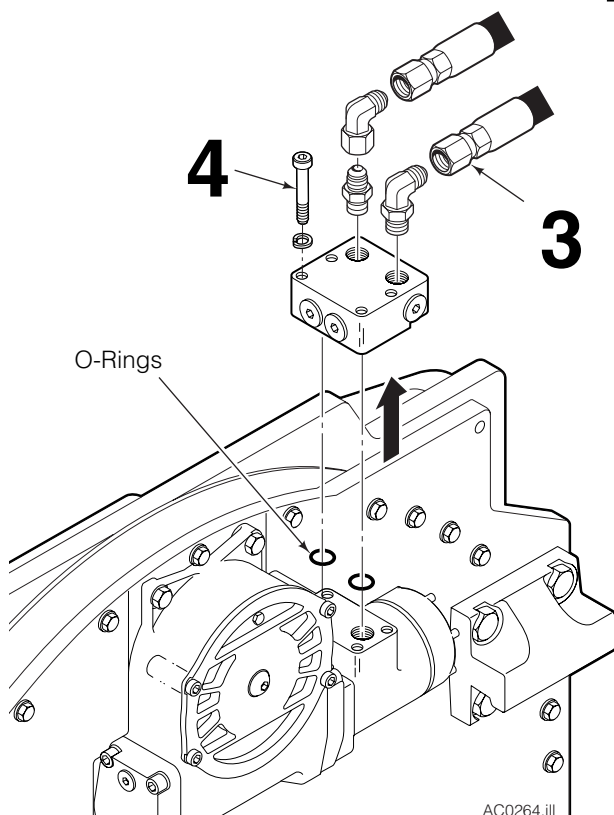
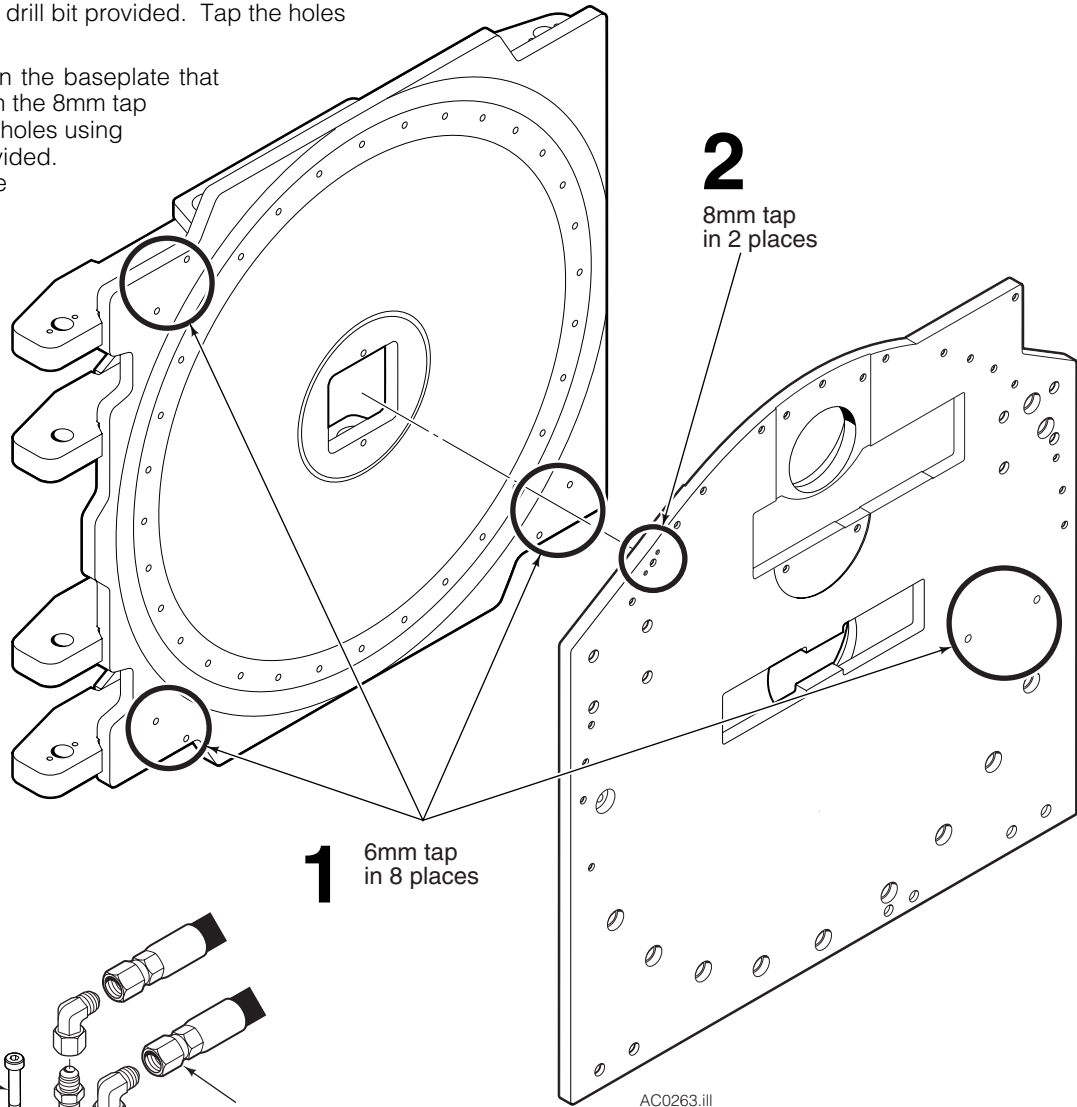
## NOTES:

1. All cables 2-conductor with Deutsch-type connectors.
2. Electrical Supply: Relay preferred for Rotational Control, Power Bus/Relay preferred for multiple accessories.
3. For Relay or Power Bus installation, refer to the following documents:  
 Relay Installation Instructions – Part No. 6006270  
 Power Bus/Relay Installation Instructions – Part No. 6019876

# Retrofit Installation

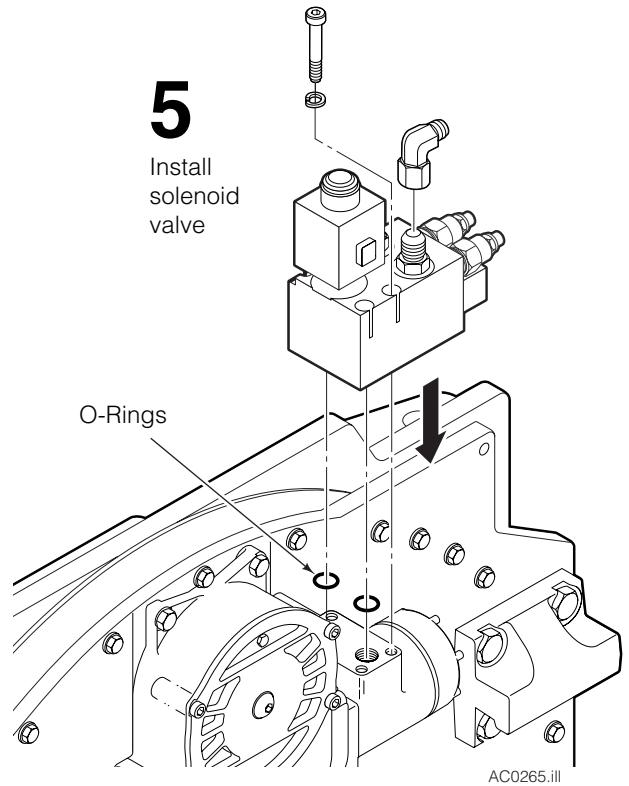
Rotational control is also available as a field installable kit for attachments that have predrilled faceplates and baseplates.

- 1** Locate the eight holes that need to be tapped with the 6mm tap provided. Six holes are located in the faceplate and two holes are located in the baseplate. Drill out the holes using the 5.3mm drill bit provided. Tap the holes using the 6mm tap.
- 2** Locate the two holes in the baseplate that need to be tapped with the 8mm tap provided. Drill out the holes using the 7.3mm drill bit provided. Tap the holes using the 8mm tap.



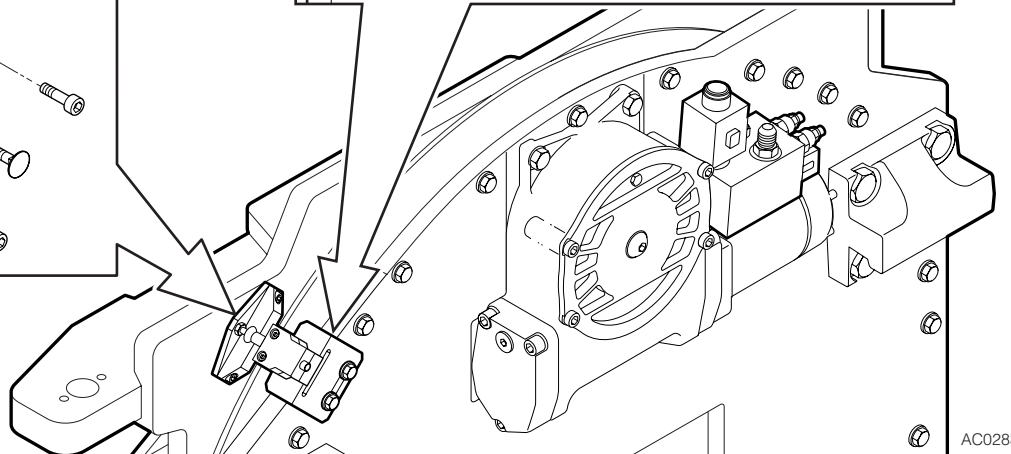
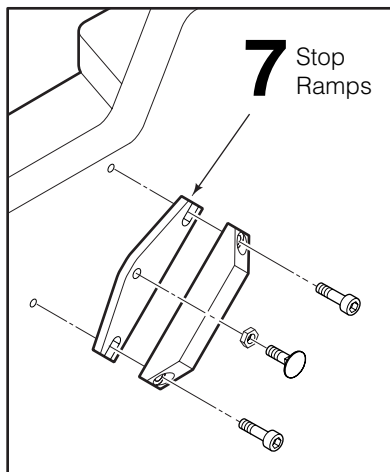
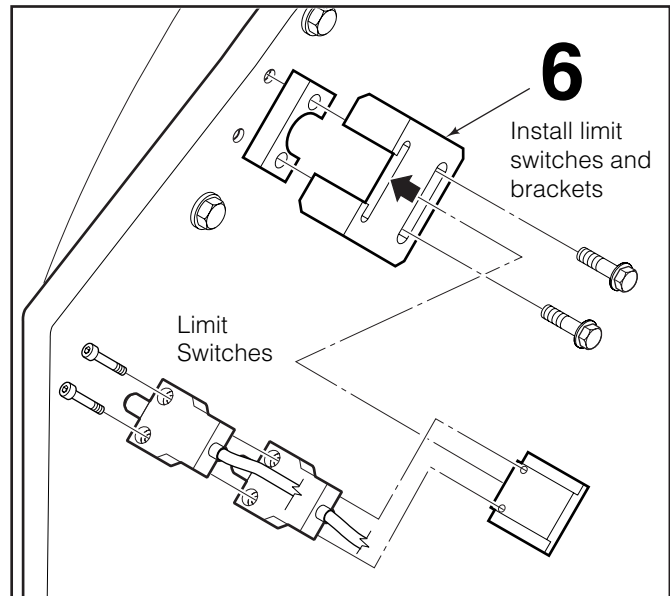
- 3** Disconnect hydraulic hoses to the drive group. Tag the hoses for reassembly.
- 4** Remove the four capscrews fastening the check valve to the drive group. Keep track of the two O-rings between the check valve and drive motor.

- 5** Install the new solenoid valve to the drive group. Place the two O-rings between the solenoid valve and drive motor and install the four capscrews. Tighten the capscrews to a torque of 20 ft.-lbs.

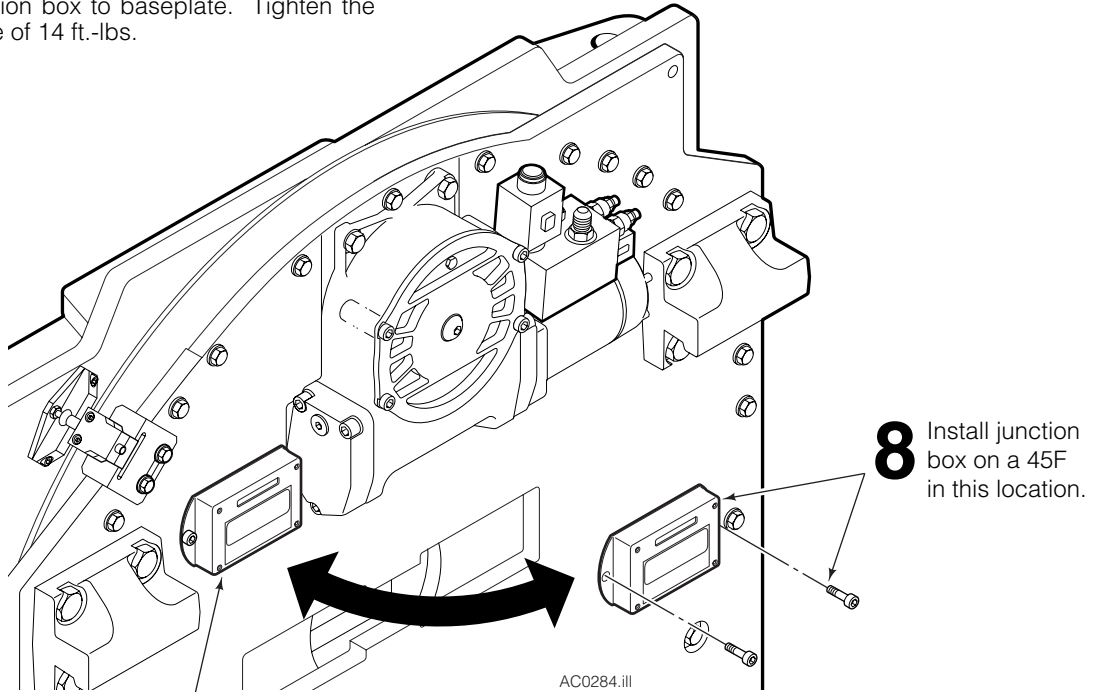


- 6** Install the limit switches and brackets to the baseplate. Tighten the baseplate bracket capscrews to a torque of 14 ft.-lbs.

- 7** Install the stop ramps to the faceplate. Tighten the stop capscrews to a torque of 3 ft.-lbs.



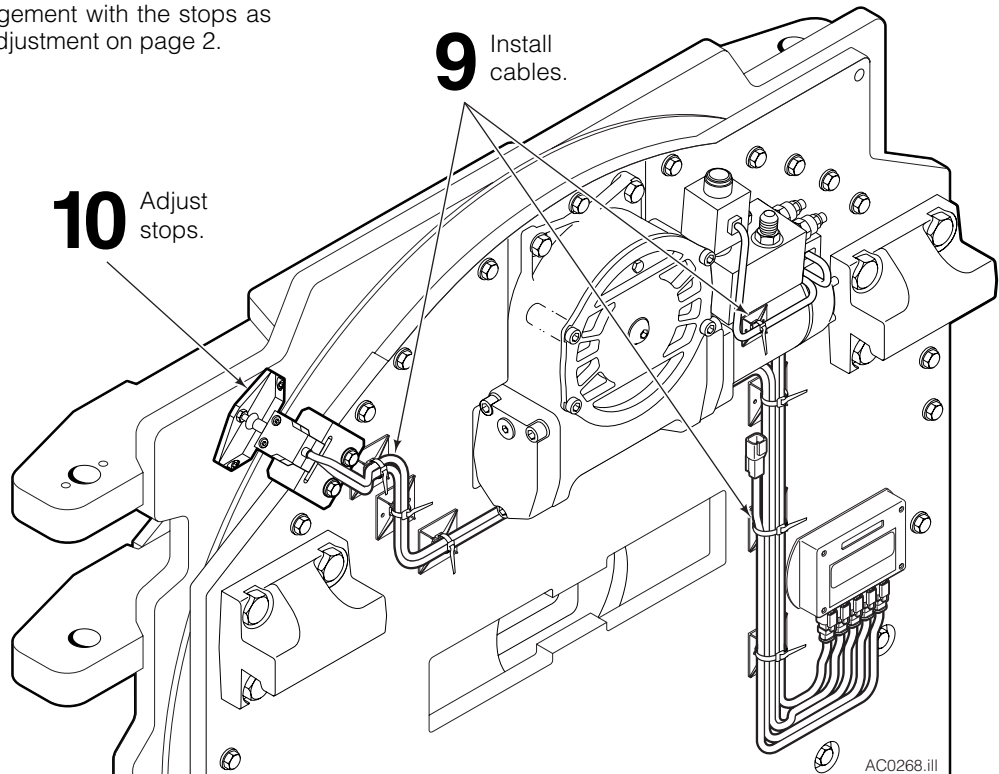
- 8** Install the cable junction box to baseplate. Tighten the capscrews to a torque of 14 ft.-lbs.



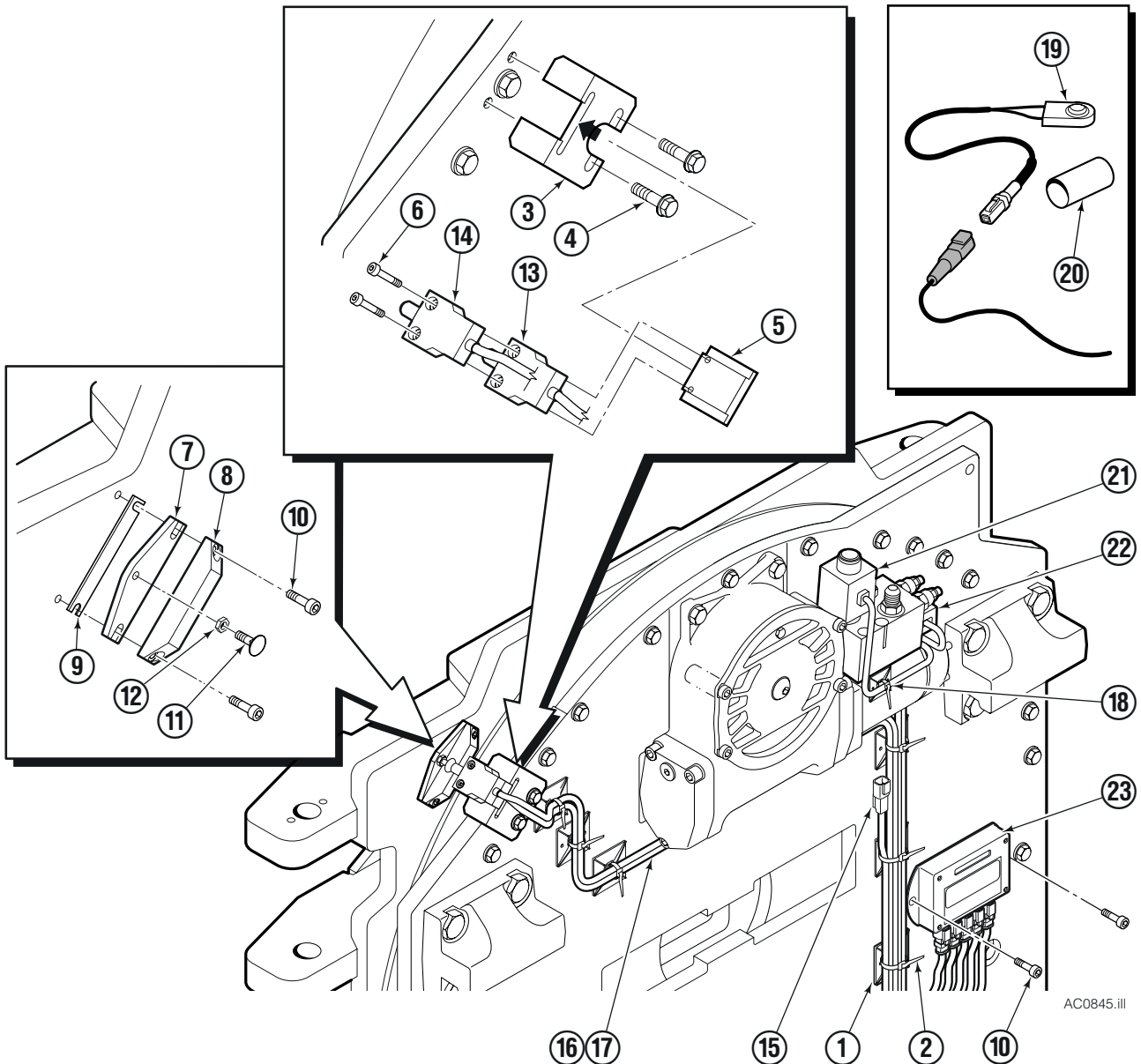
- 8** Install junction box on a 60F through 150F in this location.

- 9** Install the cables. Use the adhesive blocks and wire ties to secure the wiring.

- 10** Adjust the limit switch engagement with the stops as described in Operation and Adjustment on page 2.



# Rotational Control Package



AC0845.ill

## 100F

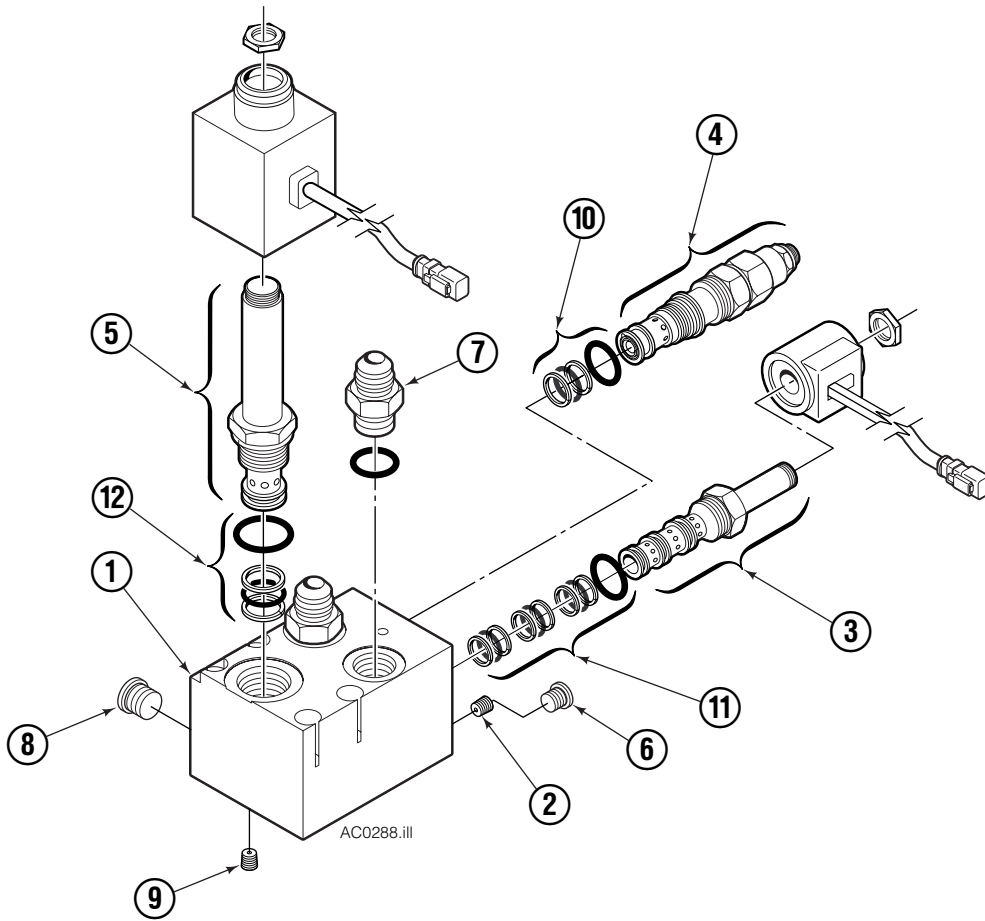
REF	QTY	PART NO.	DESCRIPTION	REF	QTY	PART NO.	DESCRIPTION
		6020697	Rotational Control Group 1 ●	12	3	765718	Nut
		6001012	Rotational Control Group 2 ■	13	1	222024	Switch/Cable Assembly
1	7	6002451	Cable Tie Anchor	14	1	222256	Switch/Cable Assembly
2	9	6002479	Cable Tie	15	1	222023	Power Cable
3	1	222021	Switch Mounting Bracket	16	1	228720	Ext. Cable Assembly
4	2	6002668	Flange Screw	17	1	228721	Ext. Cable Assembly
5	1	222020	Switch Mounting Plate	18	2	6002501	Cable Tie Anchor
6	2	768784	Capscrew	19	1	6001663	Switch Assy
7	3	6013244	Plate Stop	20	1	6001641	Shrink Tubing
8	3	6013245	Block Decal	21	1	6003161	Solenoid/Cable Assembly
9	3	6009228	Shim	22	1	6003169	Solenoid/Cable Assembly
10	8	761170	Capscrew	23	1	227888	Relay Enclosure Assembly
11	3	228690	Carriage Bolt				

● Includes items 1-18.

■ Includes items 19-20.

Reference: SK-6845.

# Solenoid Valve



REF	QTY	PART NO.	DESCRIPTION
		6001035	Valve Assembly without Coils
1	1	220565	Valve Body
2	4	220641	Orifice
3	1	220627	Solenoid Valve
4	2	6003173	Valve
5	1	221722	Solenoid Valve
6	2	663694	Fitting, 3
7	3	601377	Fitting, 8
8	3	604510	Fitting, 6
9	3	228698	Orifice
10	2	667516	Service Kit
11	1	221049	Service Kit
12	1	6031791	Service Kit



**Do you have questions you need answered right now?** Call your nearest Cascade Parts Department. Visit us online at [www.cascorp.com](http://www.cascorp.com)

**Cascade Corporation  
U.S. Headquarters**  
2201 NE 201st  
Fairview, OR 97024-9718  
Tel: 800-CASCADE (227-2233)  
FAX: 888-329-8207

**Cascade Canada Inc.**  
5570 Timberlea Blvd.  
Mississauga, Ontario  
Canada L4W-4M6  
Tel: 905-629-7777  
FAX: 905-629-7785

**Cascade GmbH**  
Niederwippekühl 1  
58579 Schalksmühle  
Germany  
Tel: 02355-50900  
FAX: 02355-509020

**Cascade Finland**  
A. Petreliuksenkatu 3  
01370 Vantaa  
Finland  
Tel: 09-8361925  
FAX: 09-8361935

**Cascade N.V.  
Benelux Sales and Service**  
Damsluisweg 56  
PO Box 3009  
1300 El Almere  
The Netherlands  
Tel: 036-5492950  
FAX: 036-5492974

**Cascade (UK) Ltd.**  
Unit 4, 12 O'Clock Court  
Attercliffe Road  
Sheffield, S4 7WW  
England  
Tel: 0870-850-8756  
FAX: 0870-850-8757

**Sales Scotland  
Macade Systems Ltd.**  
18 Melford Road  
Righead Ind. Estate  
Bellshill ML4 3LR  
Scotland  
Tel: 01698-845777  
FAX: 01698-845888

**Cascade (Africa) Pty. Ltd.**  
PO Box 625, Isando 1600  
60A Steel Road  
Sparton, Kempton Park  
South Africa  
Tel: 27-11-975-9240  
FAX: 27-11-394-1147

**Cascade Scandinavia AB**  
Hammarvägen 10  
PO Box 124  
S-56723 Vaggeryd  
Sweden  
Tel: 039-336950  
FAX: 039-336959

**Cascade France  
S.A.R.L. MHP**  
1D Rue De Charaintru BP 18,  
91360 Epinay-Sur-Orge  
France  
Tel: 01-6454-7500  
FAX: 01-6454-7501

**Cascade Hispania S.A.**  
Carrer 5, Sector C  
Zona Franca Duanera  
Poligono de la Zona Franca  
08040 Barcelona, Spain  
Tel: 93-264-07-30  
FAX: 93-264-07-31

**Cascade Italia S.R.L.**  
Via Dell'Artigianato 1  
37050 Vago di Lavagno (VR)  
Italy  
Tel: 39-045-8989111  
FAX: 39-045-8989160

**Movimenta Lda.**  
Parque Industrial  
Vale do Alecrim, Lote 108  
2950-403 Palmela  
Portugal  
Tel: 351-212387340  
FAX: 351-212387349

**Sales Switzerland  
Fahrzeugbedarf**  
8810, Horgen  
Switzerland  
Tel: 01-7279797  
FAX: 01-7279798

**Sales Poland**  
Targowa 35/61  
03-728 Warszawa  
Tel: 022-619 00 49  
FAX: 022-619 00 49  
Mobile Tel: 0501-27 29 55

**Sales Russia**  
EMCG Material Handling  
Equipment  
Moscow  
Tel: 095-795-2400  
FAX: 095-795-2475  
Email: [emcg@emcg.ru](mailto:emcg@emcg.ru)

**Cascade Japan Ltd.**  
5-5-41,  
Torikai Kami  
Settsu, Osaka  
Japan, 566  
Tel: 81-726-53-3490  
FAX: 81-726-53-3497

**Cascade Korea**  
121B 9L Namdong Ind.  
Complex, 691-8 Gojan-Dong  
Namdong-Ku  
Inchon, 405-310 Korea  
Tel: 82-32-821-2051  
FAX: 82-32-821-2055

**Cascade Australia**  
1445 Ipswich Road  
Rocklea, QLD 4107  
Australia  
Tel: 1-800-227-223  
FAX: 617-3373-7333

**Cascade New Zealand**  
15 Ra Ora Drive  
East Tamaki, Auckland  
New Zealand  
Tel: 64-9-273-9136  
FAX: 64-9-273-9137

**Cascade-Xiamen**  
No. 668 Yangguang Rd.  
Xinyang Industrial Zone  
Haicang, Xiamen City  
Fujian Province  
P.R. China 361026  
Tel: 86-592-651-2500  
FAX: 86-592-651-2571

**Sunstream Industries  
Pte Ltd.**  
No. 3 Tuas Link 1  
2263  
Singapore  
Tel: 65-6863-3488  
FAX: 65-6863-1368

**Cascade do Brasil  
Distribuidora de Garras  
e Garfos LTDA**  
Av. General Valdomiro  
de Lima 43  
Jabaquara - Sao Paulo - S.P.  
Brasil CEP 04344-070  
Tel: 55-11-5016-2484  
Fax: 55-11-5013-2809

