



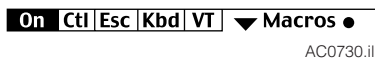
Setup Instructions

Palm™ Setup Kit 6030844 for Force Control Products

Follow the steps below to use a Palm™ handheld computer to set up Force Control products. (Acceptable Models M125, M130, Tungsten T2, T3, W, C, Zire 71.)

CAUTION: Keep Palm on charger when not in use. Communications software will be lost if battery runs down. See instructions on next page to configure *ptelnet*¹ software if required.

- 1 Connect the Palm to the system controller pigtail using the Cascade adapter cable.
- 2 Turn the Palm on and tap the 'Home' icon to see the **Cascade** page with *ptelnet* communications application ('computer screen' icon).
- 3 Tap the **ptelnet** icon.
- 4 Tap the **On** button on menu bar that appears across bottom of screen ('On' button highlights and blinking cursor appears):

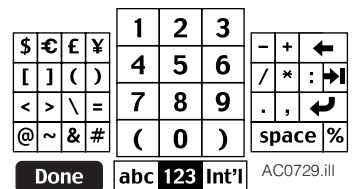
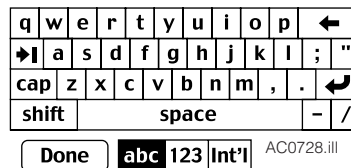
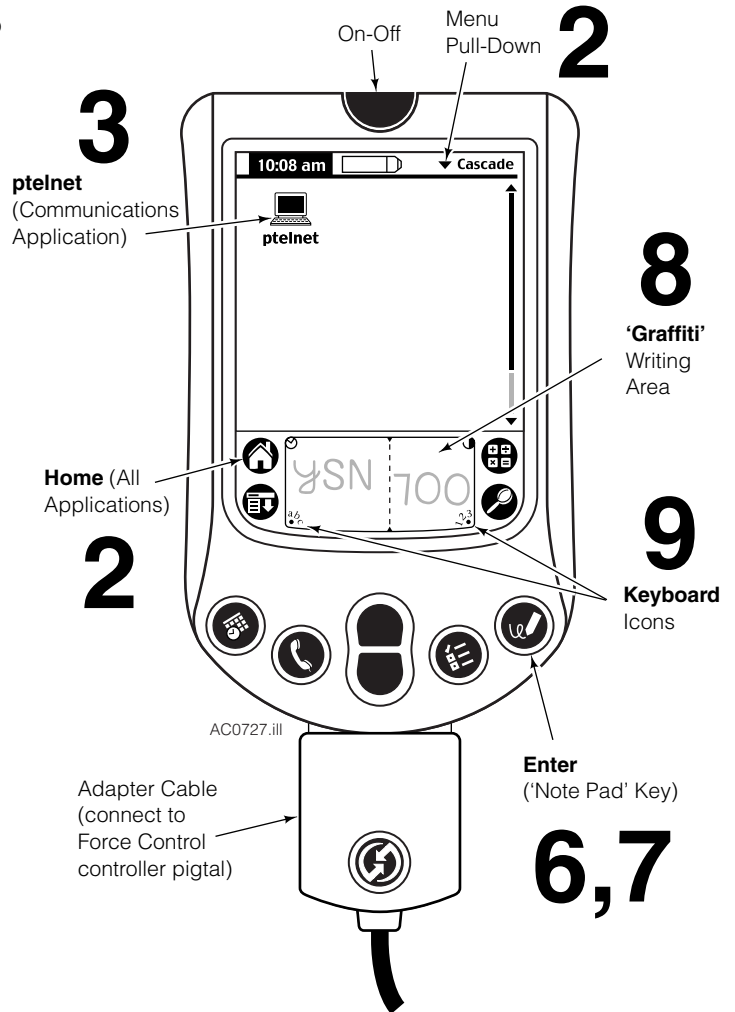


- 5 Cycle the truck key **ON/OFF**, then **ON**. Palm screen may show words 'arm movement'.
- 6 Press the **Enter** key (Palm 'squiggly line' note pad key on RH side of Palm). Words 'arm movement' may appear.
- 7 Press the **Enter** key again and follow the Force Control prompts on-screen.

IMPORTANT: Enter key ('note pad' icon) is used for all setup procedures when using the Palm. Use to cycle through Force Control menus and to return to main menu.

- 8 Use the **Graffiti™** writing area to enter data with the stylus (preferred method) then press the **Enter** key.
- 9 An alternate method of entering data uses the on-screen keyboards shown opposite. Press the on-screen **Done** button first, before pressing the **Enter** key.

IMPORTANT: If the **Enter** key is pressed before the on-screen **Done** button, the steps must be reentered. It is not possible to back up in an AFC step or menu.



¹ *ptelnet V 0.6* shareware: Marcio Migueletto de Andrade at mmand@net.em.com.br. For more information refer to Palm documentation 'Getting Started' and 'Read This First'.



For Technical Support . . .

Call: 1-800-227-2233 Fax: 1-888-329-8207
 Internet: www.cascorp.com
 Write: Cascade Corporation, PO Box 20187, Portland, OR 97294

To Order Parts . . .

Call: 1-888-227-2233 Fax: 1-888-329-0234
 Internet: www.cascorp.com
 Write: Cascade Corporation, 2501 Sheridan Ave., Springfield, OH 45505

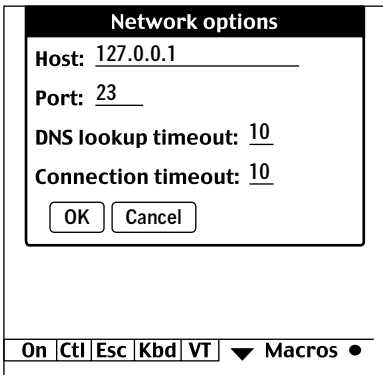
Configuring Palm™ communications program *ptelnet* (if required)

Follow the steps below to configure *ptelnet*.

(If necessary to reload *ptelnet*, use CD from Cascade or obtain as freeware for the Palm.)

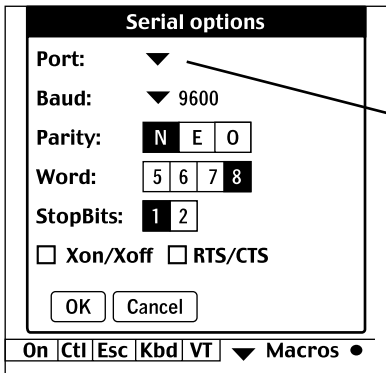
CAUTION: Keep Palm on charger when not in use. Communications software will be lost if battery runs down.

- 1 Turn the Palm On and tap the **'Home'** icon to see the **Cascade** page with *ptelnet* communications application ('computer screen' icon). Tap the **ptelnet** icon.
- 2 Tap the **'scroll down'** icon located on the lower LH side of the Palm to bring up the **'Options / Edit'** menu shown opposite.
- 3 Tap **Network** and configure the screen as shown:



AC0732.ill

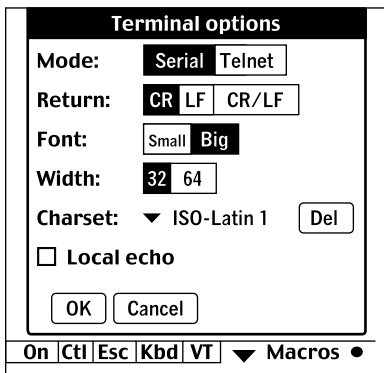
- 4 Tap **'scroll down'** icon again, then tap **Serial** and choose one of the options shown based on the Palm model:



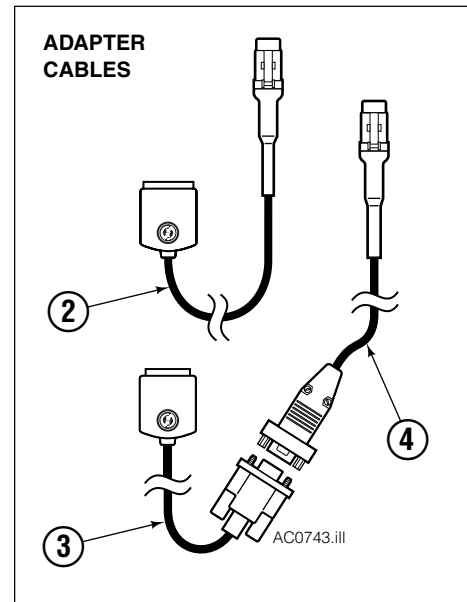
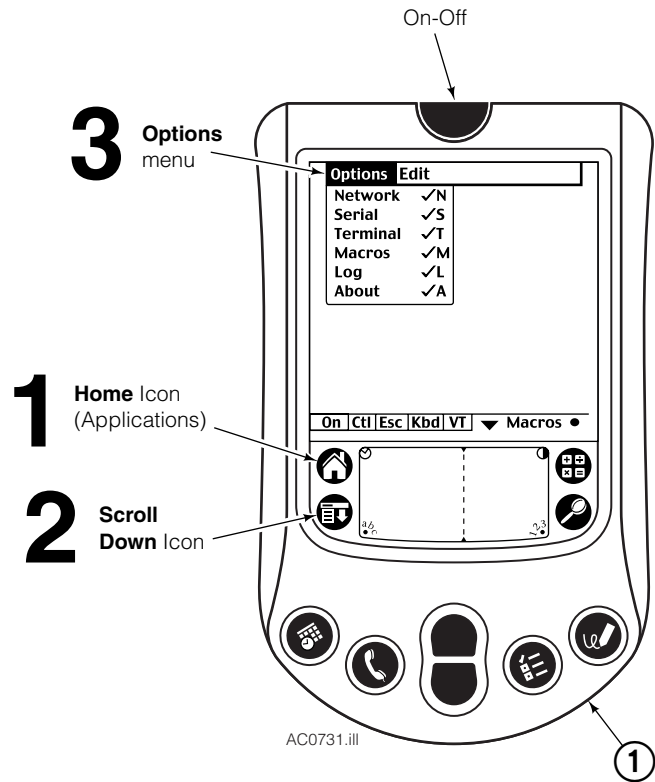
AC0733.ill

- RS232 IR
- OR-
- UART2 Hot Sync
- OR-
- (ser 0)

- 5 Tap **'scroll down'** icon again, then tap **Terminal** and configure the screen as shown:



AC0734.ill



Parts List

REF	QTY	PART NO.	DESCRIPTION
		6030844	Mobile Setup Kit
1	1	6031161	Palm Handheld
2	1	6031330	Cable, Palm-to-Force Control
3	1	6030842 ■	Cable, Palm-to-Serial ●
4	1	6030691 ■	Cable, Serial-to-Force Control
-	1	6030840	<i>ptelnet</i> Communication Software
-	1	6034054	<i>ptelnet</i> CD Backup

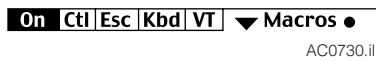
● Palm Part Number P10804U.

■ May be substituted for 6031330.

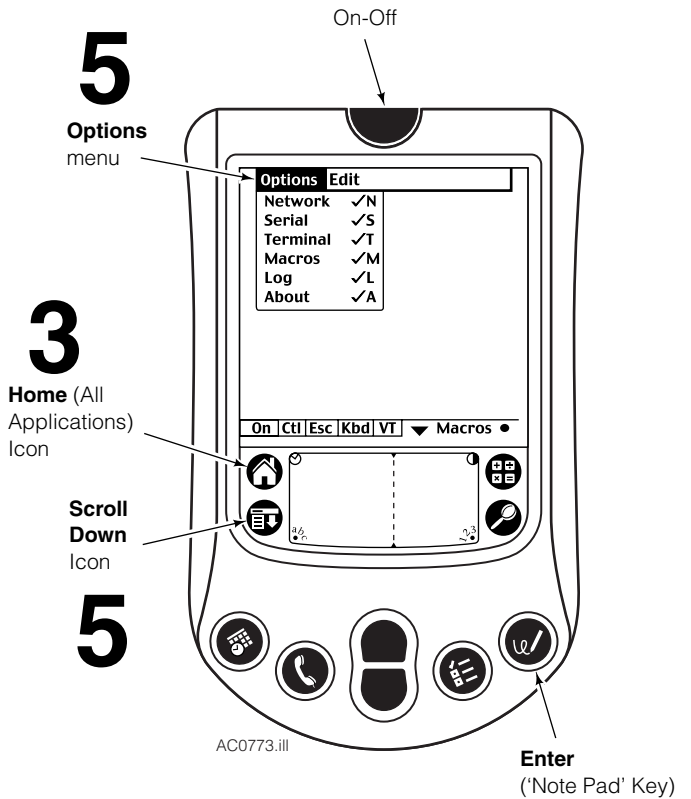
Capturing Force Control Diagnostics Page

Follow the steps below to capture the Force Control Diagnostics Page as a 'memo' in the Palm computer. This enables viewing the page or downloading (Palm 'HotSync') to your PC.

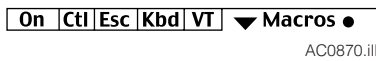
- 1 **Cycle the Clamp through a CLAMP/HOIST cycle, leave truck running.** (current settings will be stored in Diagnostics Menu in controller).
- 2 Connect the Palm to the system controller pigtail using the Cascade adapter cable.
- 3 Turn the Palm On and tap the **'Home'** icon to see the **Cascade** page with *ptelnet* communications application ('computer screen' icon).
- 4 Tap **ptelnet**, and tap **On** button on menu bar that appears across bottom of screen ('On' button highlights, blinking cursor appears):



- 5 Tap the **'scroll down'** icon located at the lower LH side of the Palm character screen to bring up the **'Options/Edit'** menu shown opposite above.

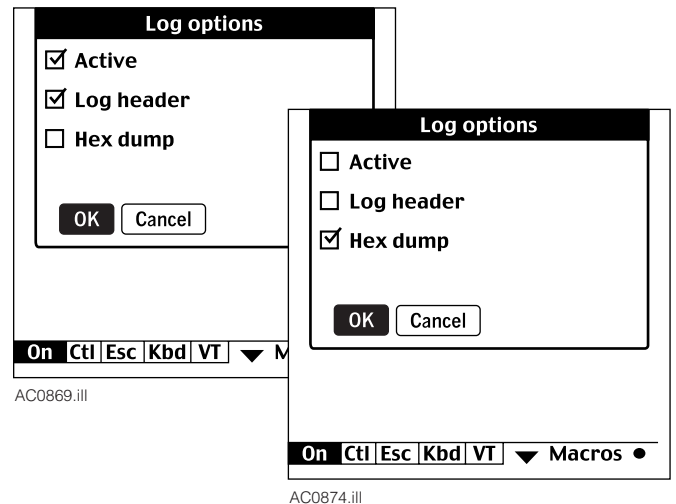


- 6 Tap **'log'** and check 'Active' and 'Log Header' (opposite), tap **OK**.
- 7 Cycle the truck key **ON/OFF**, then **ON**. Palm screen may show words **'arm movement'**.
- 8 Press the **Enter** key ('Note Pad squiggly line' key on RH side of Palm) and look for the words **'arm movement'**
- 9 Press the **Enter** key again which brings up the Force Control main menu. Select units, then select **menu 3 - Diagnostics Page** (bottom right).
- 10 Tap the **'scroll down'** icon to bring up the **'Options/Edit'** menu again (top right).
- 11 Tap **'log'** again, uncheck 'Active' and 'Log header', check 'Hex dump' (opposite). Tap **OK**. Turn *ptelnet* OFF by unhighlighting 'On' at bottom of screen:



- 12 Tap the **'Home'** icon, locate and tap the **'Memo Pad'** icon, which brings up the captured Diagnostics Page (opposite) as the first new 'memo'.

You can now view the Diagnostics Page on the Palm by scrolling, or you can download ('HotSync') the page to your PC. **NOTE:** PC must have Palm application software to download the memo.



<ul style="list-style-type: none"> <input type="checkbox"/> Switch 1 <input type="checkbox"/> Switch 2 <input checked="" type="checkbox"/> Load Weight <input checked="" type="checkbox"/> Calculated Clamp Force <input checked="" type="checkbox"/> Measured Clamp Pressure <input checked="" type="checkbox"/> Calculated Clamp Pressure <input checked="" type="checkbox"/> Clamp Force/Weight Ratio <input type="checkbox"/> Pulswidth <input type="checkbox"/> Hoist Pressure <input type="checkbox"/> Calibrated Load Pressure <input type="checkbox"/> Calibrated Attachment Pressure <input type="checkbox"/> Trimpot <input type="checkbox"/> Measured Pressures <input type="checkbox"/> EEPROM values <input type="checkbox"/> EEPROM values <input type="checkbox"/> EEPROM values <input type="checkbox"/> EEPROM values 	9,12	<ul style="list-style-type: none"> Closed Open 2000 lbs. 4000 lbs. 1400 psi 1400 psi 14 2800 800 psi 800 psi 800 psi 50 1,1,2,1 1,1,1,1,7,208,14,12,10 10,240,175,3,132,3,32 0,245,1,2,14,144,1,252 12,128,3,232,10,240,4,176
---	------	--

Do you have questions you need answered right now? Call your nearest Cascade Service Department. Visit us online at www.cascorp.com

AMERICAS

**Cascade Corporation
U.S. Headquarters**
2201 NE 201st
Fairview, OR 97024-9718
Tel: 800-CASCADE (227-2233)
Fax: 888-329-8207

Cascade Canada Inc.
5570 Timberlea Blvd.
Mississauga, Ontario
Canada L4W-4M6
Tel: 905-629-7777
Fax: 905-629-7785

Cascade do Brasil
Rua João Guerra, 134
Macuco, Santos - SP
Brasil 11015-130
Tel: 55-13-2105-8800
Fax: 55-13-2105-8899

EUROPE-AFRICA

**Cascade Italia S.R.L.
European Headquarters**
Via Dell'Artigianato 1
37030 Vago di Lavagno (VR)
Italy
Tel: 39-045-8989111
Fax: 39-045-8989160

Cascade (Africa) Pty. Ltd.
PO Box 625, Isando 1600
60A Steel Road
Sparton, Kempton Park
South Africa
Tel: 27-11-975-9240
Fax: 27-11-394-1147

ASIA-PACIFIC

Cascade Japan Ltd.
2-23, 2-Chome,
Kukuchi Nishimachi
Amagasaki, Hyogo
Japan, 661-0978
Tel: 81-6-6420-9771
Fax: 81-6-6420-9777

Cascade Korea
121B 9L Namdong Ind.
Complex, 691-8 Gojan-Dong
Namdong-Ku
Inchon, Korea
Tel: +82-32-821-2051
Fax: +82-32-821-2055

Cascade-Xiamen
No. 668 Yangguang Rd.
Xinyang Industrial Zone
Haicang, Xiamen City
Fujian Province
P.R. China 361026
Tel: 86-592-651-2500
Fax: 86-592-651-2571

**Cascade India Material
Handling Private Limited**
No 34, Global Trade Centre
1/1 Rambaugh Colony
Lal Bahadur Shastri Road,
Navi Peth, Pune 411 030
(Maharashtra) India
Phone: +91 020 2432 5490
Fax: +91 020 2433 0881

Cascade Australia Pty. Ltd.
1445 Ipswich Road
Rocklea, QLD 4107
Australia
Tel: 1-800-227-223
Fax: +61 7 3373-7333

Cascade New Zealand
15 Ra Ora Drive
East Tamaki, Auckland
New Zealand
Tel: +64-9-273-9136
Fax: +64-9-273-9137

**Sunstream Industries
Pte. Ltd.**
18 Tuas South Street 5
Singapore 637796
Tel: +65-6795-7555
Fax: +65-6863-1368

