

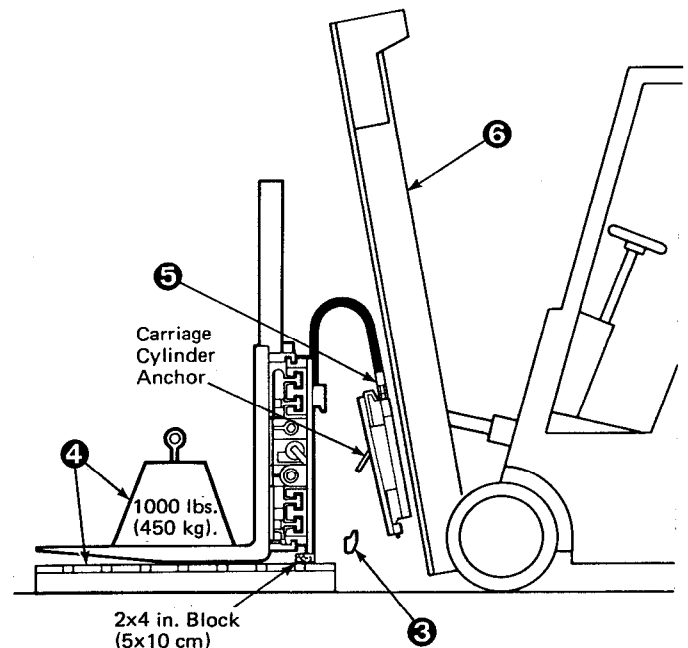
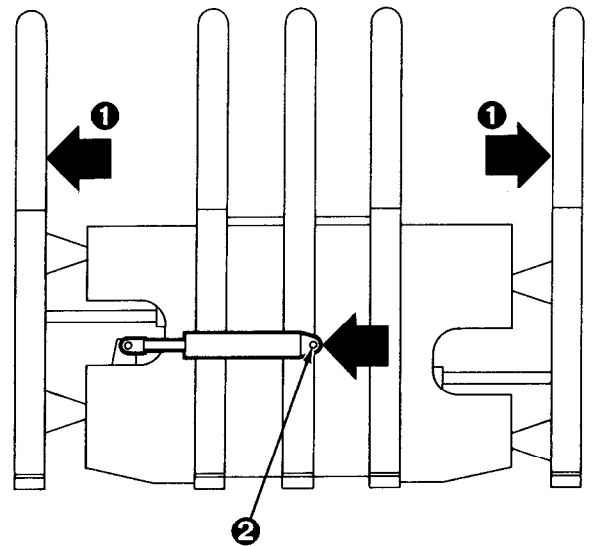


Technical Bulletin

Single-Double Pallet Handler Hose Conversion Kits 361128 and 361304

This sheet describes the installation of a new hose bracket and cylinder supply hoses.

- 1 Extend the outer forks just outside the width of the frame.
- 2 Remove the cotter pin and clevis pin from the sideshift cylinder base anchor. Retract the sideshift cylinder.
- 3 Disconnect the lower hooks.
Bolt On Type – Remove the lower mounting hooks. For reassembly, tighten the capscrews to a torque of 105-115 ft.-lbs. (140-155 Nm).
Quick Change Type – Pull out the retaining pin, slide the hook down and reinstall the pin in the lower hole. For reassembly, slide the hook up and install the pin in the top hole.
- 4 Place a pallet under the attachment. Lower the mast carriage until the attachment is resting on the pallet with 2 X 4 in. (5 X 10 cm) blocks placed as shown. Set a 1000 lb. (450 kg.) weight on the forks to hold the attachment upright.
- 5 Disconnect and plug the truck hoses to the attachment. Tag the hoses for reassembly.
- 6 Make sure the weight on the forks is secure. Lower the mast carriage to clear the upper mounting hooks. Back the truck away. The carriage cylinder anchor bracket will stay on the truck.



NOTE: This information should not be interpreted as the basis for warranty claims unless so designated.

Part No. 205221

cascade®

For Technical Support . . .

Call: 1-800-227-2233

OR

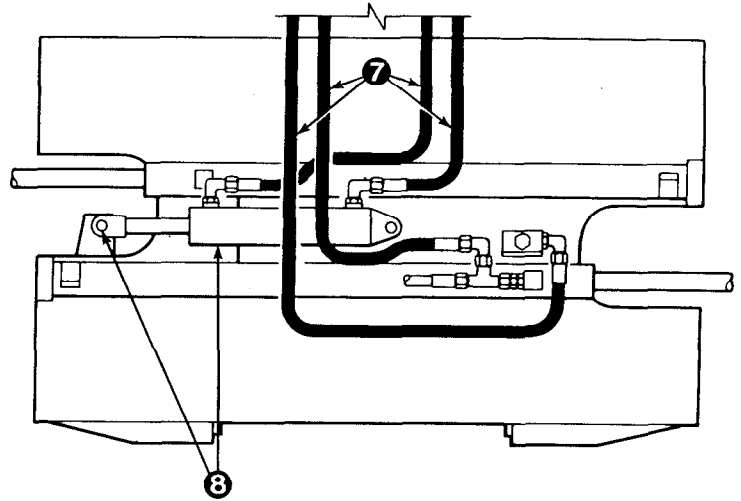
Write: Cascade Corporation, P.O. Box 20187, Portland, OR 97220

To Order Parts . . .

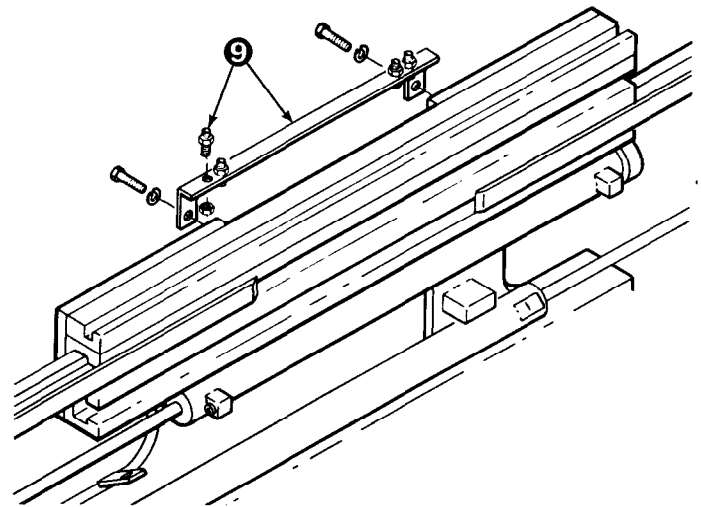
Call: 1-888-227-2233

OR

Write: Cascade Corporation, 2501 Sheridan Ave., Springfield, OH 45505



- 7 Remove the hoses from the sideshift and fork positioning cylinders. Discard the hoses.
- 8 Remove the cotter pin and clevis pin from the rod end of the sideshift cylinder. Remove the sideshift cylinder.



- 9 Connect the four bulkhead fittings to the new bracket. Install the bracket using the two innermost capscrews on the top of the frame. Tighten the capscrews to a torque of 105-115 ft.lbs. (140-155 Nm).

NOTE: Some Class III units may require the installation of new upper hooks prior to installing the bracket. These hooks will be provided by Cascade. Tighten the hook capscrews to a torque of 105-115 ft.lbs. (140-155 Nm).

- 10 Install hose part no. 359926 to the valve 90° fitting. Route the hose behind the cylinders and connect it to the outer bulkhead fitting.
- 11 Install hose part no. 355925 or 360588 (whichever is provided) to the tee fitting at the rod end of the lower cylinder. Route the hose behind the cylinders and connect it to the inner bulkhead fitting.
- 12 Loosen the sideshifter fittings and rotate them towards the rod end of the cylinder. Tighten the fittings. Mount the sideshift cylinder base end to the bracket on the mounting plate with the clevis pin and cotter pin.
- 13 Install hose part no. 359923 to the base end of the sideshift cylinder. Route the hose behind the cylinders and connect it to the inner bulkhead fitting.
- 14 Install hose part no. 359924 to the rod end of the sideshift cylinder. Route the hose behind the cylinders and connect it to the outer bulkhead fitting.
- 15 Mount the attachment on the carriage cylinder anchor. Reinstall the lower hooks. Connect the truck hoses to the attachment fittings.
- 16 Extend the sideshift cylinder to engage the cylinder anchor bracket. Install the clevis pin and cotter pin.

