

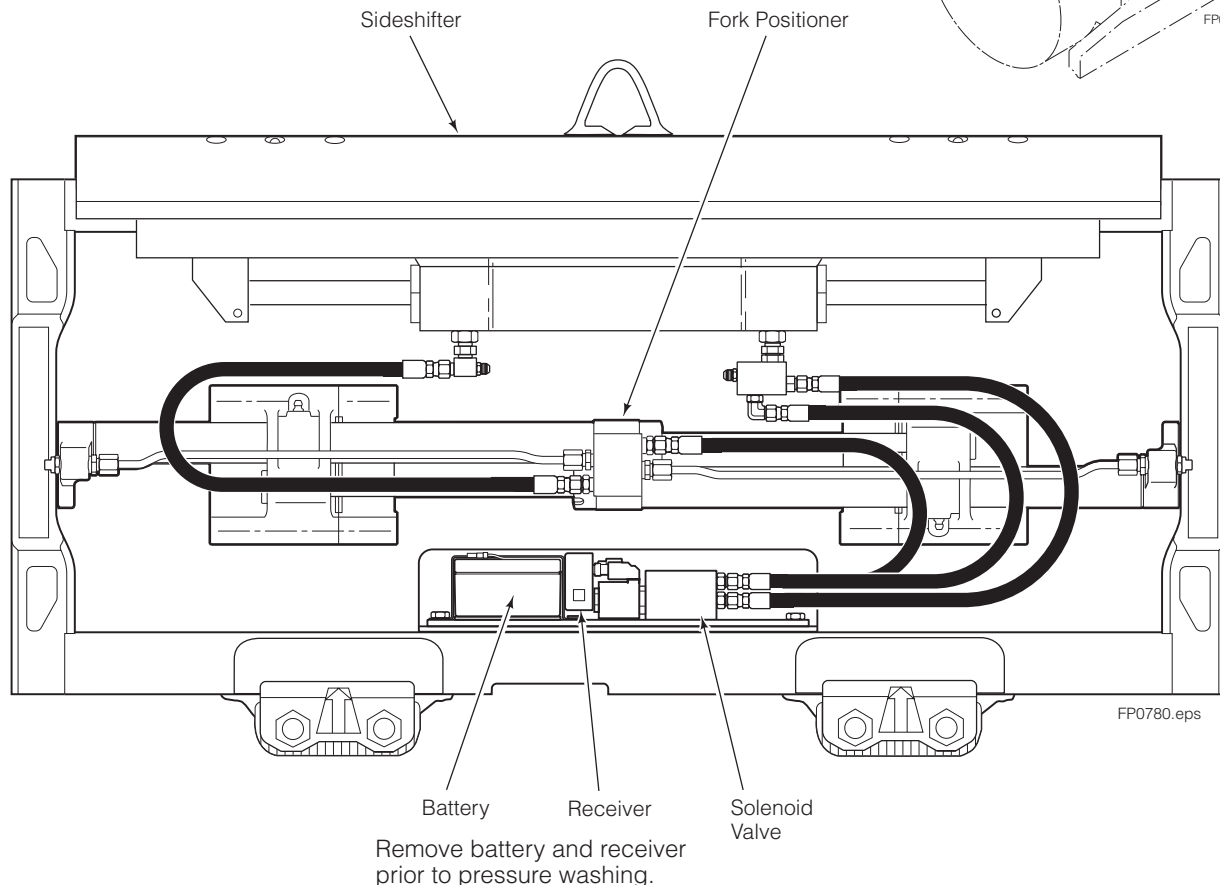
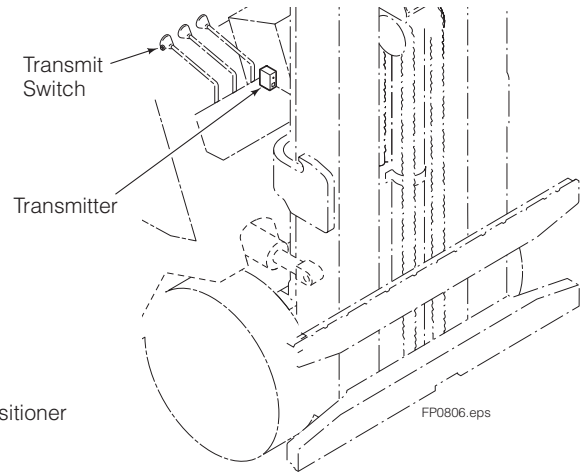


Installation Instruction

K-Series Fork Positioner Radio Frequency (RF) Hydraulic Control Kit 6054400

This sheet provides installation instructions and replacement parts list for Cascade Hydraulic Control Kit 6054400. The kit provides two function operation using a single function hydraulic supply and radio frequency (RF) solenoid actuation to select the sideshift or fork position functions. The attachment mounted solenoid is battery powered and driver activated by a remote transmitter mounted on the truck.

CAUTION: If the truck or attachment will be cleaned with a pressure washer, remove the battery and receiver from the attachment prior to cleaning. High pressure water can damage the battery and receiver.



cascade[®]
corporation

For Technical Support . . .

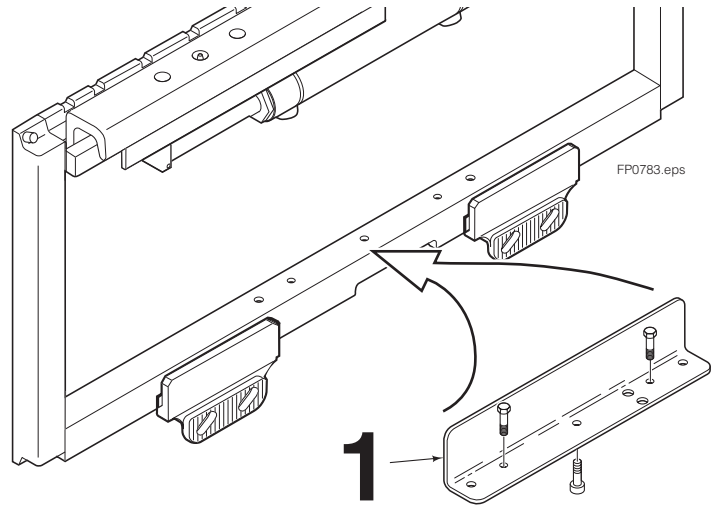
Call: 1-800-227-2233 Fax: 1-888-329-8207
Internet: www.cascorp.com
Write: Cascade Corporation, PO Box 20187, Portland, OR 97294

To Order Parts . . .

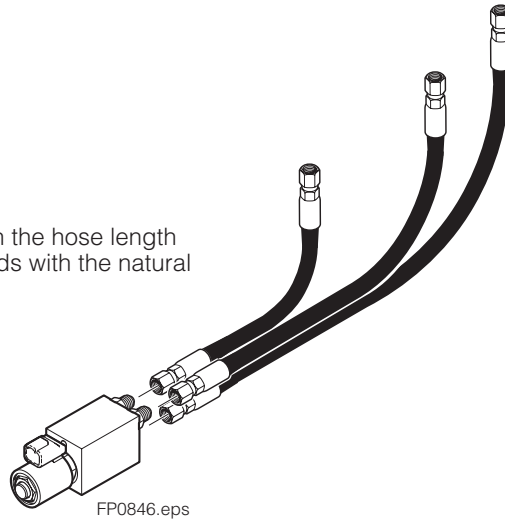
Call: 1-888-227-2233 Fax: 1-888-329-0234
Internet: www.cascorp.com
Write: Cascade Corporation, 2501 Sheridan Ave., Springfield, OH 45505

Component Installation

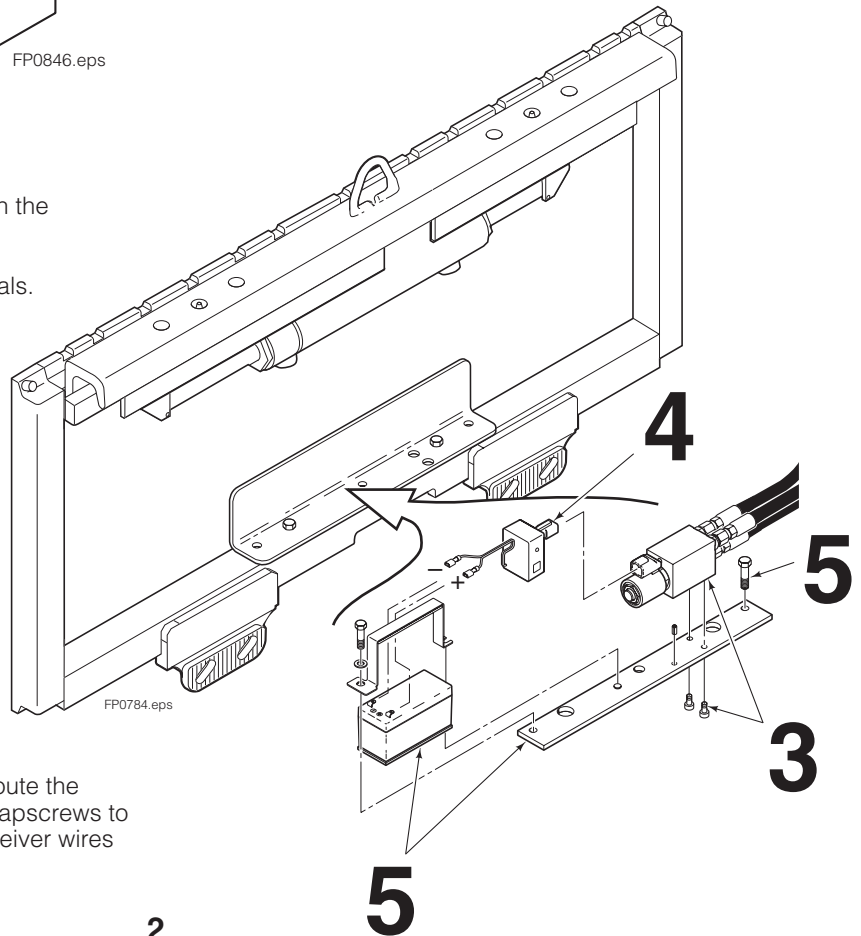
- 1 Mount the guard to the sideshifter lower carriage bar. Tighten the capscrews to a torque of 26 ft.-lbs. (35 Nm).



- 2 Install the hoses to the valve fittings with the hose length orientation shown. Tighten the hose ends with the natural bend of the hoses upward.

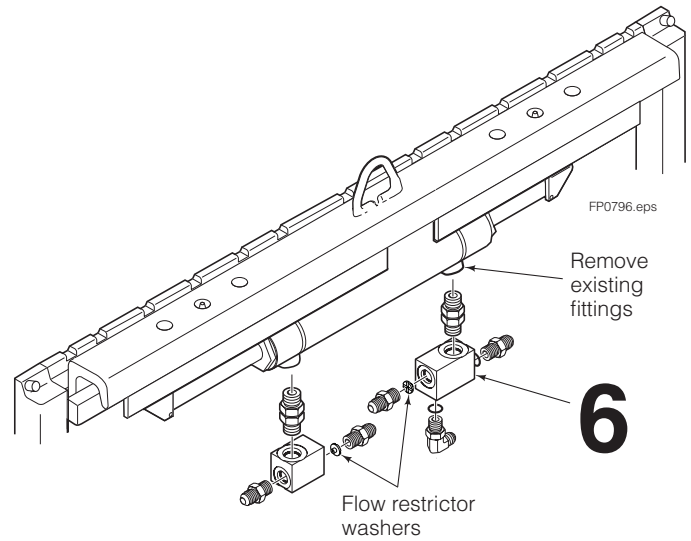


- 3 Install the solenoid valve to the bracket. Tighten the capscrews to a torque of 4 ft.-lbs. (5 Nm).
- 4 Connect the receiver to the solenoid coil terminals.

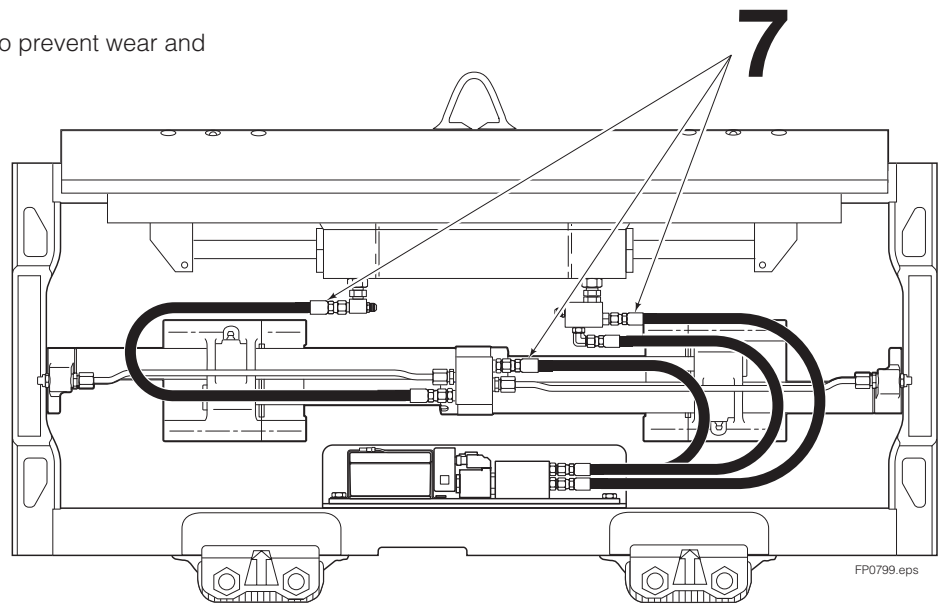


- 5 Install the bracket and battery to the guard. Route the receiver wires under the bracket. Tighten the capscrews to a torque of 26 ft.-lbs. (35 Nm). Connect the receiver wires to the battery terminals, Red (+) and Black (-).

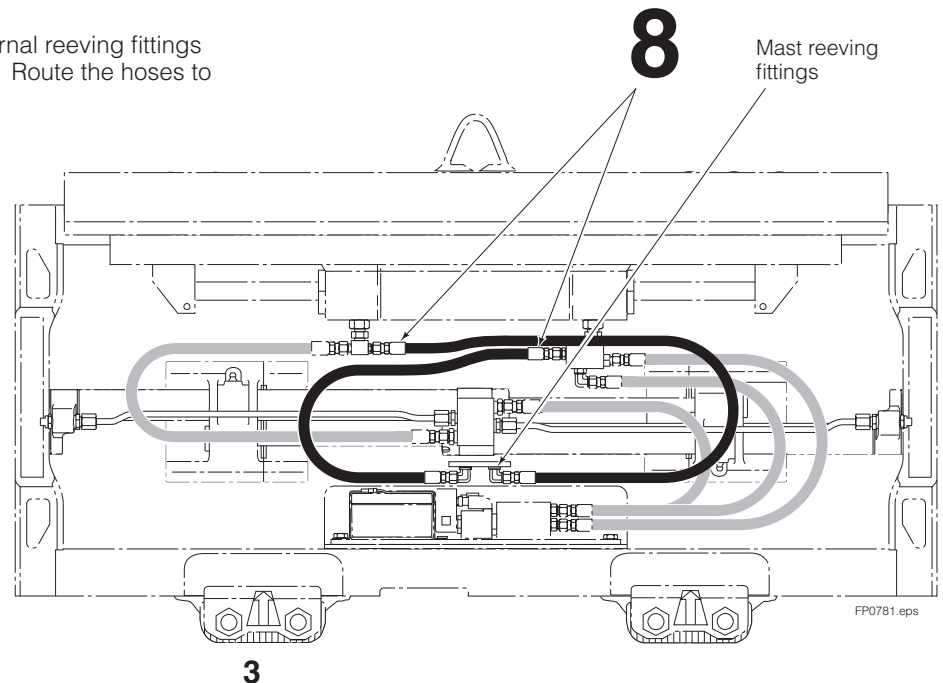
6 Remove any existing fittings and restrictor washers from the sideshift cylinder ports. Install the new supply manifolds and fittings to the sideshift cylinder ports. Do not remove the flow restrictor washers from the manifolds.



7 Install the kit hoses. Route the hoses to prevent wear and pinch points.



8 Install supply hoses from the mast internal reeving fittings to the sideshift cylinder supply fittings. Route the hoses to prevent wear and pinch points.



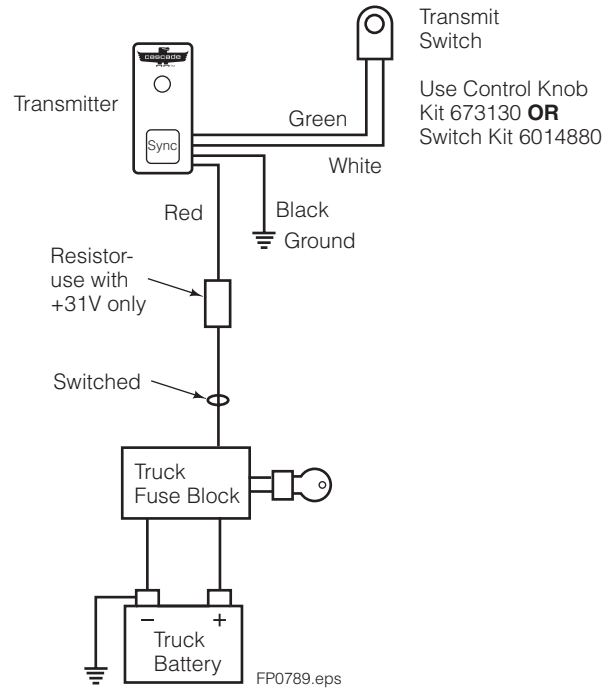
Transmitter Installation

1 Install the transmitter in an easy to view and accessible location for the driver. Provide at least 8 in. (20 cm) clearance between the driver and transmitter.

IMPORTANT: The transmitter must not be co-located or operating in conjunction with any other antenna or transmitter.

2 Connect the transmitter red wire to a switched terminal on the truck fuse block. Connect the black wire to chassis ground. Connect the two remaining wires to a control knob transmit switch. Use Cascade Control Knob Kit 673130 or Switch Kit 6014880.

IMPORTANT: The resistor connected to the red wire is for use on trucks operating at 31V and higher. Remove the resistor on trucks operating at 30V or less.



Synchronizing Transmitter and Receiver

The transmitter and receiver have been synchronized at the factory. If resynchronizing is required, follow these steps:

1 Press and hold the SYNC button on the transmitter for 3 seconds. The LED will begin to flash red and green.

WARNING: Do not reach through the mast to access the receiver SYNC button. Access the SYNC button from the front of the attachment.

2 Within 15 seconds, press and hold the SYNC button on the receiver for 3 seconds. When the units are synchronized to each other, the flashing red and green LED will stop and the receiver will respond to the transmitter when the transmit switch is pressed.

Operation

Transmitter – When the transmit switch is pressed, the LED on the transmitter will blink **green** every 1/2 second if there is communication between the transmitter and receiver. The solenoid coil clicks when the valve internal spool shifts.

The transmitter will blink **green** once a second if there is no communication with the receiver.

The transmitter LED will blink **red** once a second for a truck battery low condition (voltage below 10.5V).

After 1 hour of inactivity, the receiving unit goes into a sleep mode to conserve power. Press and hold the transmit switch button for 3 seconds to wake the unit for operation.

Receiver – The receiver will blink every 1/2 second when it is receiving a signal from the transmitter. The color of the blink is determined by the voltage of the receiver's battery.

The LED blinks **green** when voltage is above 10V.

The LED blinks **amber** when the voltage is between 9-10V.

The LED blinks **red** below 9V to show that a battery recharge is required.

At less than 8V, the receiver will not respond to the transmitter.

The transmitter and receiver operate in the frequency range of 902.2 –927.8 Mhz @ .004 watts output.

Battery

Battery life between recharges is approximately 350 hours of normal operation. The light on the receiver indicates battery power level:

Green – Full power (10V+)

Amber – Half Power (9-10V)

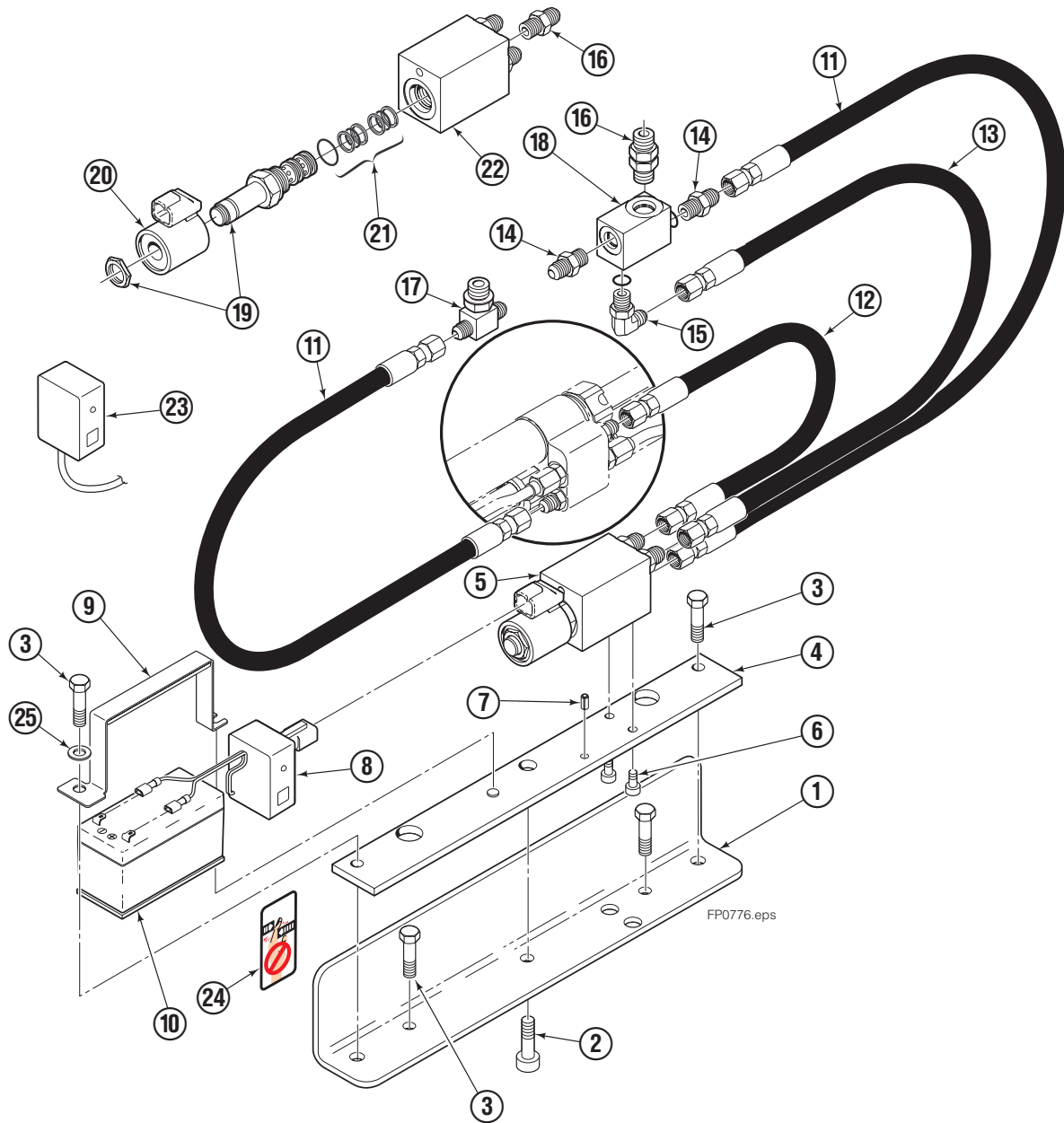
Red – Recharge soon (8-9V)

None – No power, recharge

Chargers available are listed.

LOCATION	BATTERY CHARGER
	PART NO.
USA	6055457
Americas	6055452
Europe	6055453
United Kingdom	6055454
Australia	6055455
Japan	6055456

Hydraulic Control Kit



REF	QTY	PART NO.	DESCRIPTION	REF	QTY	PART NO.	DESCRIPTION
		6054400	Hydraulic Control Kit	13	1	6050052	Hose, 20.0 in. (510 mm)
		6052246	Guard	14	5	617915	Fitting, 4-4
1	1	767611	Capscrew, M10 x 40	15	1	617917	Fitting, 4-4
2	1	767611	Capscrew, M10 x 40	16	1	201671	Fitting
3	4	787373	Capscrew, M8 x 25	17	1	6050638	Fitting
4	1	6054448	Mounting Bar	18	1	6050411	Manifold
5	1	6052236	Solenoid Valve ●	19	1	6008166	Solenoid Cartridge
6	2	768785	Capscrew	20	1	6054451	Solenoid Coil
7	1	768991	Roll Pin, 5 x 10 mm	21	1	—	Service Kit
8	1	6053766	Receiver	22	1	6052237	Valve Body
9	1	6054507	Mounting Bracket	23	1	6053765	Transmitter
10	1	6054209	Battery, 12V	24	2	665595	Decal
11	2	6050405	Hose, 22.0 in. (560 mm)	25	1	787398	Washer, M8
12	1	6050725	Hose, 15.75 in. (400 mm)				

● Includes items 19–22.

Do you have questions you need answered right now? Call your nearest Cascade Service Department. Visit us online at www.cascorp.com

**Cascade Corporation
U.S. Headquarters**
2201 NE 201st
Fairview, OR 97024-9718
Tel: 800-CASCADE (227-2233)
FAX: 888-329-8207

Cascade Canada Inc.
5570 Timberlea Blvd.
Mississauga, Ontario
Canada L4W-4M6
Tel: 905-629-7777
FAX: 905-629-7785

Cascade GmbH
Dahlener Strasse 570
41239 Mönchengladbach
Germany
Tel: 02166-68230
FAX: 02166-682323

Cascade Finland
A. Petreliuksenkatu 3
01370 Vantaa
Finland
Tel: 09-8361925
FAX: 09-8361935

**Cascade N.V.
Benelux Sales and Service**
Damsluisweg 56
PO Box 3009
1300 El Almere
The Netherlands
Tel: 036-5492950
FAX: 036-5492974

Cascade (UK) Ltd.
Unit 4, 12 O'Clock Court
Attercliffe Road
Sheffield, S4 7WW
England
Tel: 0870-850-8756
FAX: 0870-850-8757

**Sales Scotland
Macade Systems Ltd.**
18 Melford Road
Righead Ind. Estate
Bellshill ML4 3LR
Scotland
Tel: 01698-845777
FAX: 01698-845888

Cascade (Africa) Pty. Ltd.
PO Box 625, Isando 1600
60A Steel Road
Sparton, Kempton Park
South Africa
Tel: 27-11-975-9240
FAX: 27-11-394-1147

Cascade Scandinavia AB
Hammarvägen 10
PO Box 124
S-56723 Vaggeryd
Sweden
Tel: 039-336950
FAX: 039-336959

**Cascade France
S.A.R.L. MHP**
1D Rue De Charaintru BP 18,
91360 Epinay-Sur-Orge
France
Tel: 01-6454-7500
FAX: 01-6454-7501

Cascade Hispania S.A.
Carrer 5, Sector C
Zona Franca Duanera
Poligono de la Zona Franca
08040 Barcelona, Spain
Tel: 93-264-07-30
FAX: 93-264-07-31

Cascade Roncari S.R.L.
Via Dell'Artigianato 1
37050 Vago di Lavagno (VR)
Italy
Tel: 39-045-8989111
FAX: 39-0458989160

**Sales Portugal FAG
Santos Lda**
Rua do Mercado
Lte 6, Loja 2-Tires 2785-630
S. Domingos De Rana
Portugal
Tel: 214-448-083
FAX: 214-458-098

**Sales Switzerland
Fahrzeugbedarf**
8810, Horgen
Switzerland
Tel: 01-7279797
FAX: 01-7279798

Sales Poland
Targowa 35/61
03-728 Warszawa
Tel: 022-619 00 49
FAX: 022-619 00 49
Mobile Tel: 0501-27 29 55

Sales Russia
EMCG Material Handling
Equipment
Moscow
Tel: 095-795-2400
FAX: 095-795-2475
Email: emcg@sovintel.ru

Cascade Japan Ltd.
5-5-41,
Torikai Kami
Settsu, Osaka
Japan, 566
Tel: 81-726-53-3490
FAX: 81-726-53-3497

Cascade Korea
121B 9L Namdong Ind.
Complex, 691-8 Gojan-Dong
Namdong-Ku
Inchon, 405-310 Korea
Tel: 82-32-821-2051
FAX: 82-32-821-2055

Cascade Australia
1445 Ipswich Road
Rocklea, QLD 4107
Australia
Tel: 1-800-227-223
FAX: 617-3373-7333

Cascade New Zealand
15 Ra Ora Drive
East Tamaki, Auckland
New Zealand
Tel: 64-9-273-9136
FAX: 64-9-273-9137

Cascade-Xiamen
No. 668 Yangguang Rd.
Xinyang Industrial Zone
Haicang, Xiamen City
Fujian Province
P.R. China 361026
Tel: 86-592-651-2500
FAX: 86-592-651-2571

**Sunstream Industries
Pte Ltd.**
No. 3 Tuas Link 1
2263
Singapore
Tel: 65-6863-3488
FAX: 65-6863-1368

