

PARTS MANUAL

70F Fork Clamp

Manual Number 228957 R-0

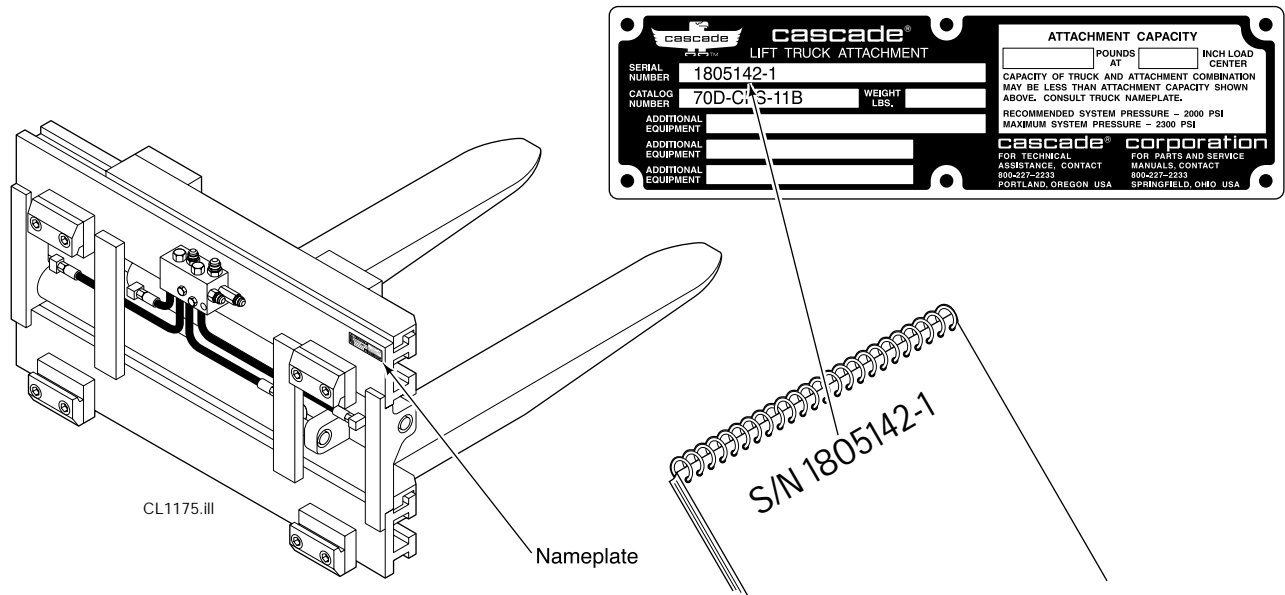
cascade[®]

Cascade is a Registered Trademark of Cascade Corporation

About This Manual

Introduction

This Manual shows the parts breakdown for standard production 70F Fork Clamps. Locate the product nameplate on the baseplate as shown below. If the nameplate is missing, all necessary information is stamped into the baseplate at the same location. The serial number must be used when ordering replacement parts for this product.



Ordering Parts

Customers – Cascade parts and service literature is available through authorized lift truck dealers. To place an order, contact the lift truck dealer of your choice.

Lift Truck Dealers – To order parts and service literature contact:

Cascade Parts Sales
2501 Sheridan Avenue
Springfield, OH 45505
Telephone: 888-CASCADE (227-2233)
FAX: 888-329-0234

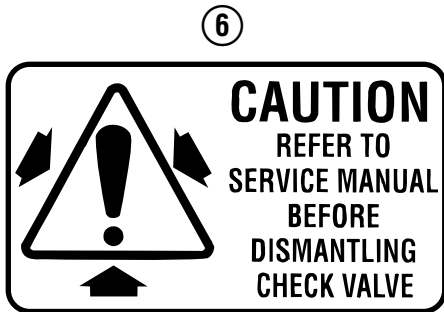
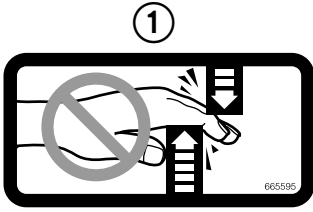


WARNING: For safety of yourself and others, DO NOT install the parts shown in this manual unless you have thoroughly reviewed the appropriate Service Manual.

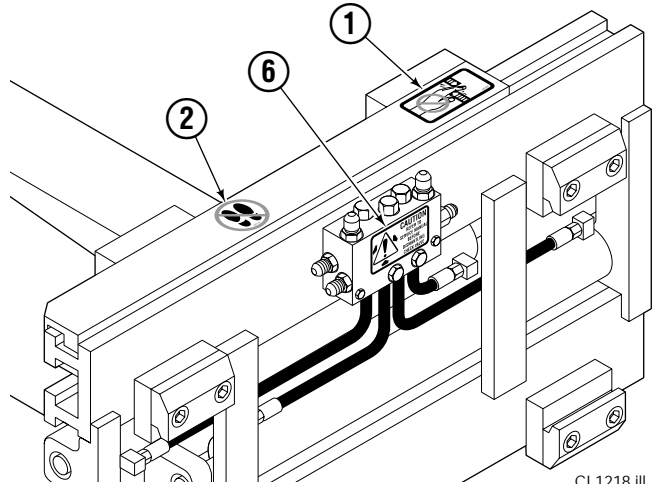
Product Identification Index

70F Fork Clamps										
Model Type	Serial Number	Frame Group	Cylinder Group	Valve Group	Fittings	Hose Group	Bale Arm	Fork Arm	Arm Bases	Mount Group
70F-CFS-11B	1805142	1	2	3	4	5	-	6	-	7, 8
70F-CFS-11C	1805143	1	2	3	4	5	-	6	-	7, 8
70F-CFS-12B	1805144	1	2	3	4	5	-	6	-	7, 8
70F-CFS-12C	1805145	1	2	3	4	5	-	6	-	7, 8
70F-CFS-13B	1805146	1	2	3	4	5	-	6	-	7, 8
70F-CFS-13C	1805147	1	2	3	4	5	-	6	-	7, 8
70F-CFS-14B	1805148	1	2	3	4	5	-	6	-	7, 8
70F-CFS-14C	1805149	1	2	3	4	5	-	6	-	7, 8

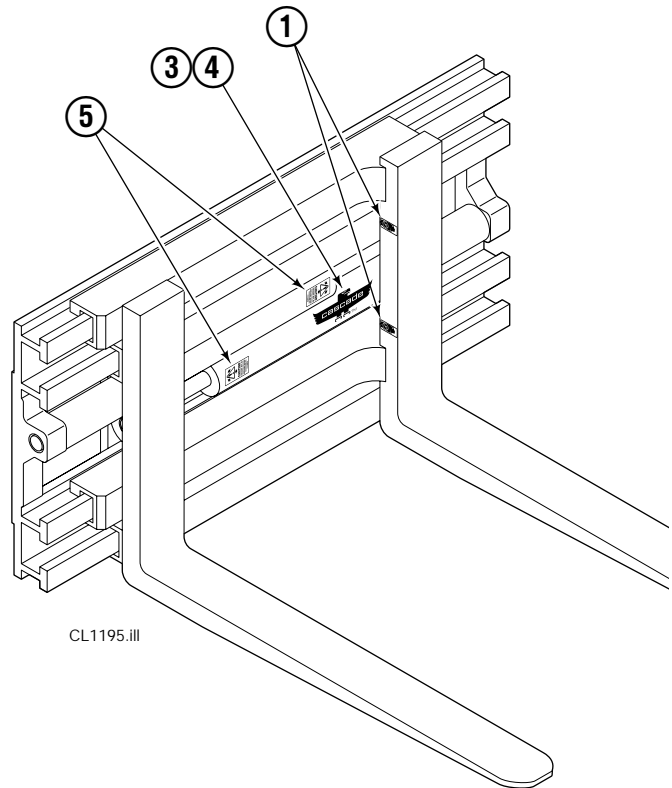
Decals



CL0941.iii



CL1218.iii

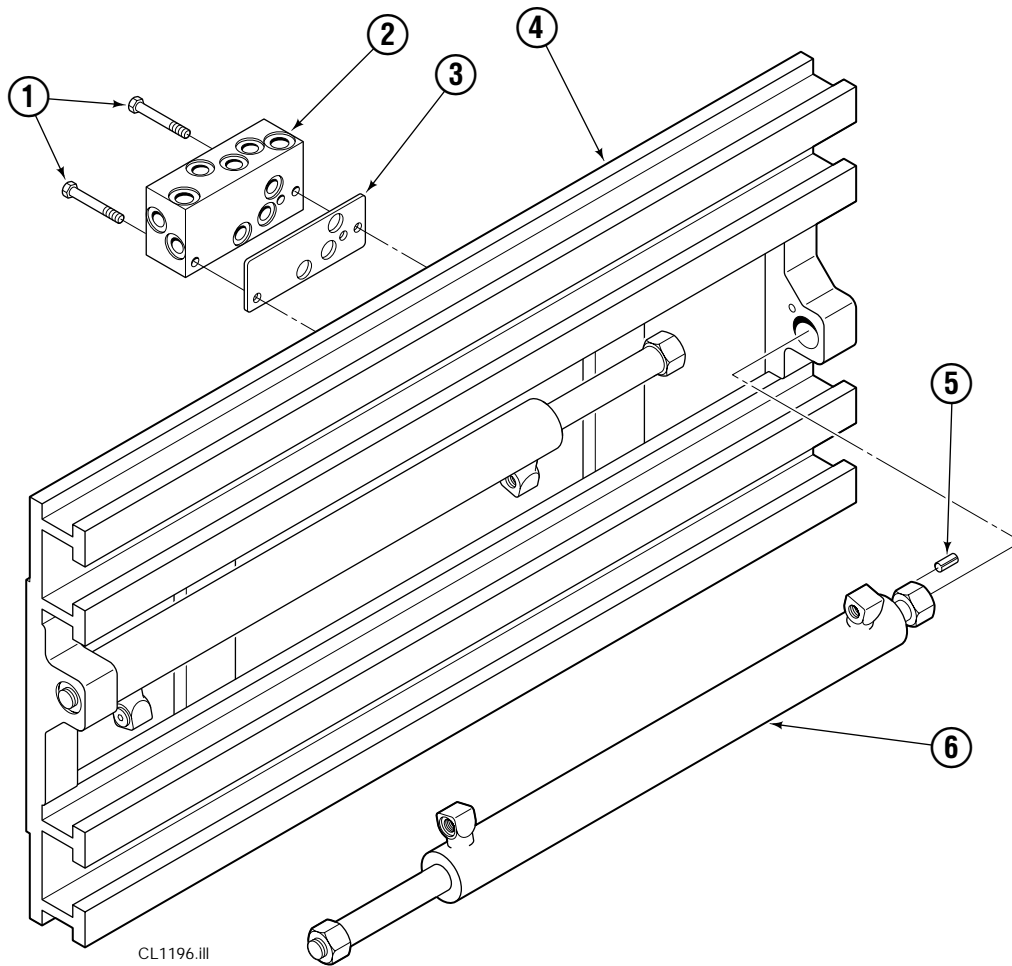


CL1195.iii

All Clamps			
REF	QTY	PART NO.	DESCRIPTION
1	12	665595	No Hand Hold Decal
2	6	679150	No Step Decal
3	1	211274	Eagle - 80 mm
4	2	211276	Eagle - 240 mm
5	2	665677	Pressure Warning
6	2	18018269	Pressure Warning

Frame Group

Rear Mounted Valve

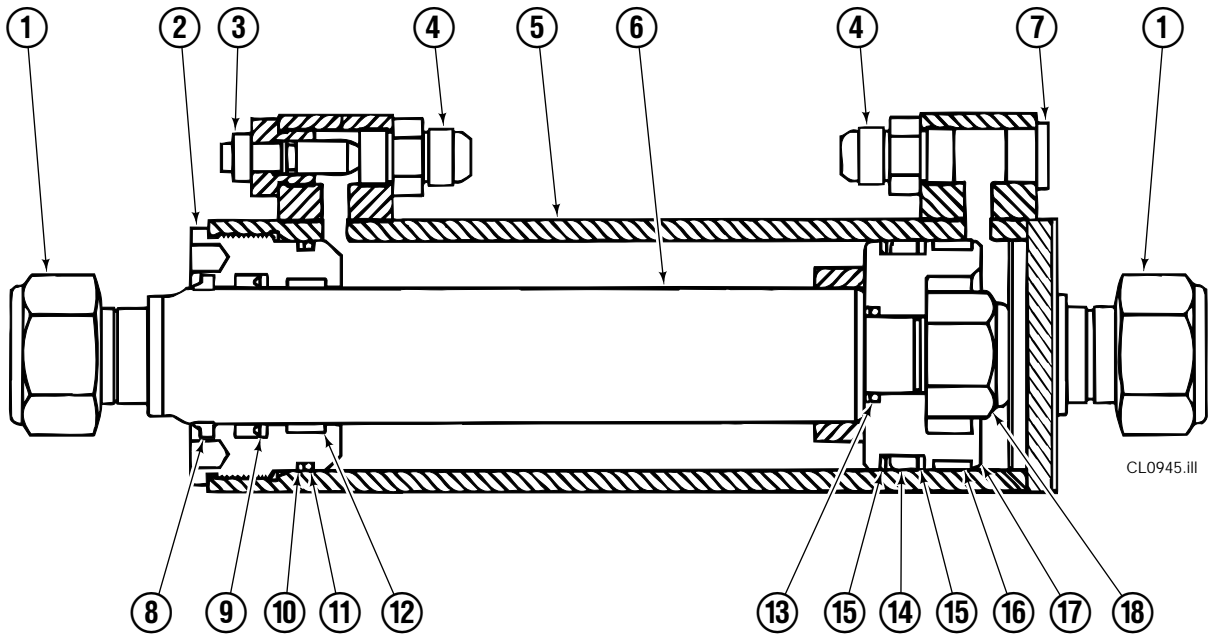


70F				
REF	QTY	Class III PART NO.	Class IV PART NO.	DESCRIPTION
1	2	768532	768532	Capscrew, M8x1.25x75L
2	1	1808009	1808009	Valve Assembly – Rear Mount ★
3	1	1808045	—	Spacer Plate
4	1	1803326	1803326	Frame Assembly – 1270mm (51.0 in.)
5	2	769028	769028	Roll Pin
6	2	1806044	1806044	Cylinder – 1270mm (51.0 in.) ●

★ See Valve page for parts breakdown.

● See Cylinder page for parts breakdown.

Cylinder – 3 in. Bore



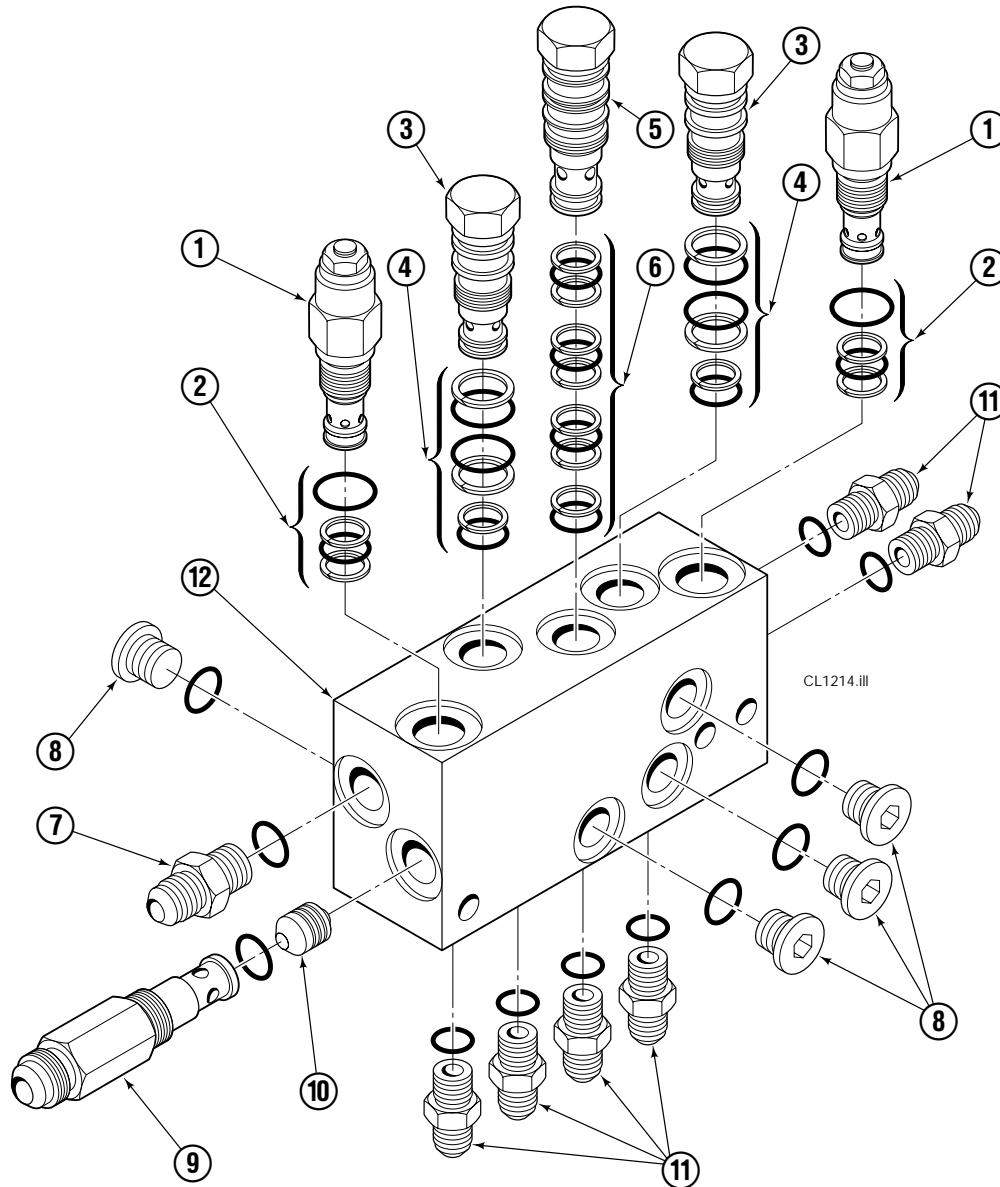
70F			
REF	QTY	PART NO.	DESCRIPTION
		1806044	Cylinder
1	2	1806049	Nut
2	1	1802264	Gland Nut
3	1	1806002	● Restrictor Cartridge
4	2	601377	Fitting, 8-8
5	1	1807060	Barrel
6	1	1802187	Rod
7	1	602580	Plug
8	1	644691	◆ Wiper
9	1	1808275	◆ Seal
10	1	615136	◆ Backup Ring
11	1	2793	◆ O-ring
12	1	660759	◆ Wear Ring
13	1	2714	◆ O-ring
14	1	1808275	◆ Seal
15	2	1802323	◆ Backup Ring
16	1	660765	◆ Wear Ring
17	1	1802263	Piston
18	1	1808267	Nut
	1	1808204	Service Kit

◆ Included in Service Kit 1808204.

● See Restrictor Cartridge page for parts breakdown.

Valve Assembly

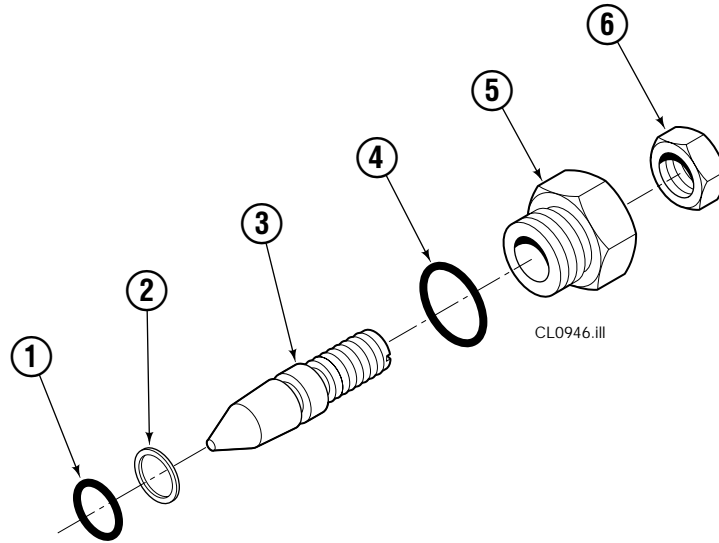
Relief on Open/Close/Sideshift



70F			
REF	QTY	PART NO.	DESCRIPTION
		1808009	Valve Assembly
1	2	1808248	Relief Valve
	2	1808329	◆ Seal Kit
3	2	659058	Check Valve
4	2	661347	◆ Seal Kit
5	1	204922	Check Valve
6	1	1808326	◆ Seal Kit
7	1	601377	Fitting, 8-8
8	4	604510	Plug
9	1	1808032	Fitting, Extended
10	1	1808033	Plunger
11	6	604511	Fitting, 6-6
12	1	1808038	Valve Body
	1	1808332	Service Kit

◆ Included in Service Kit 1808332

Restrictor Cartridge

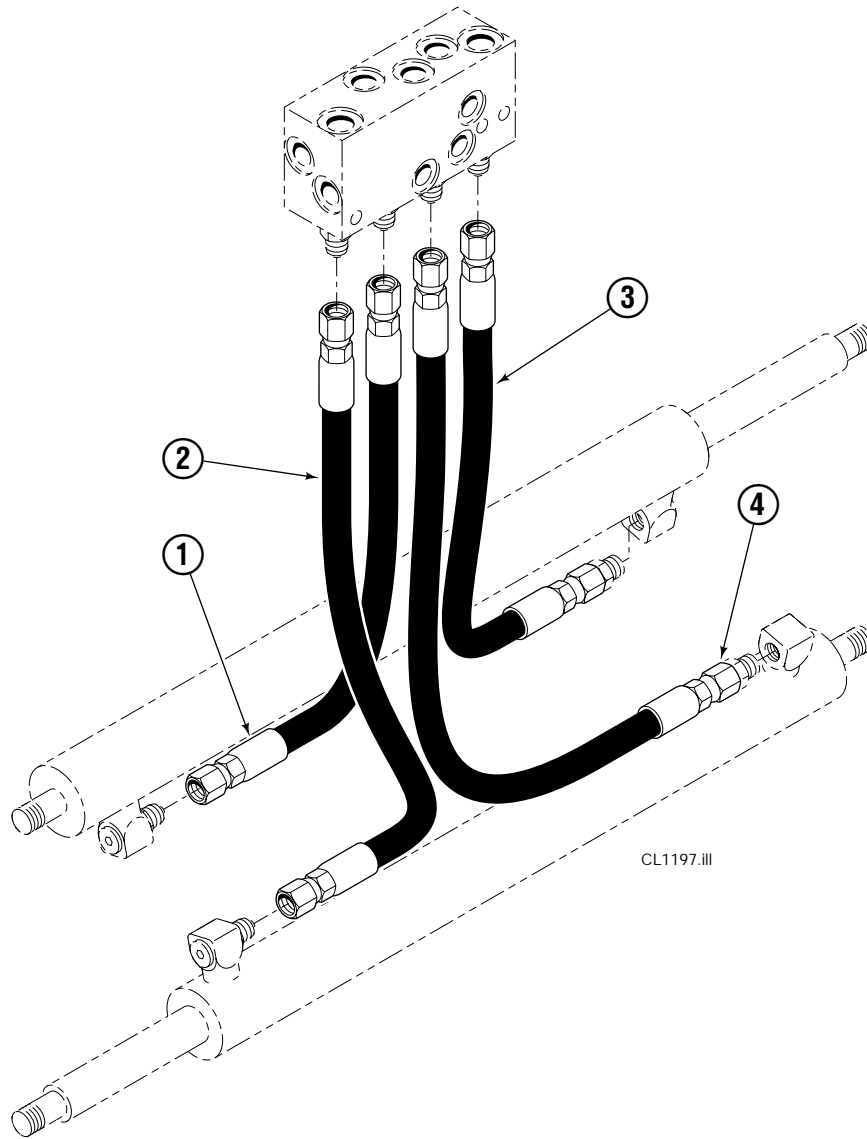


70F			
REF	QTY	PART NO.	DESCRIPTION
		1806002	Restrictor Cartridge
1	1	2841	◆ O-Ring
2	1	615005	◆ Backup Ring
3	1	1802032	Plunger
4	1	2701	◆ O-ring
5	1	1802031	Body
6	1	5768	Lock Nut
	1	1808201	Service Kit

◆ Included in Service Kit 1808201.

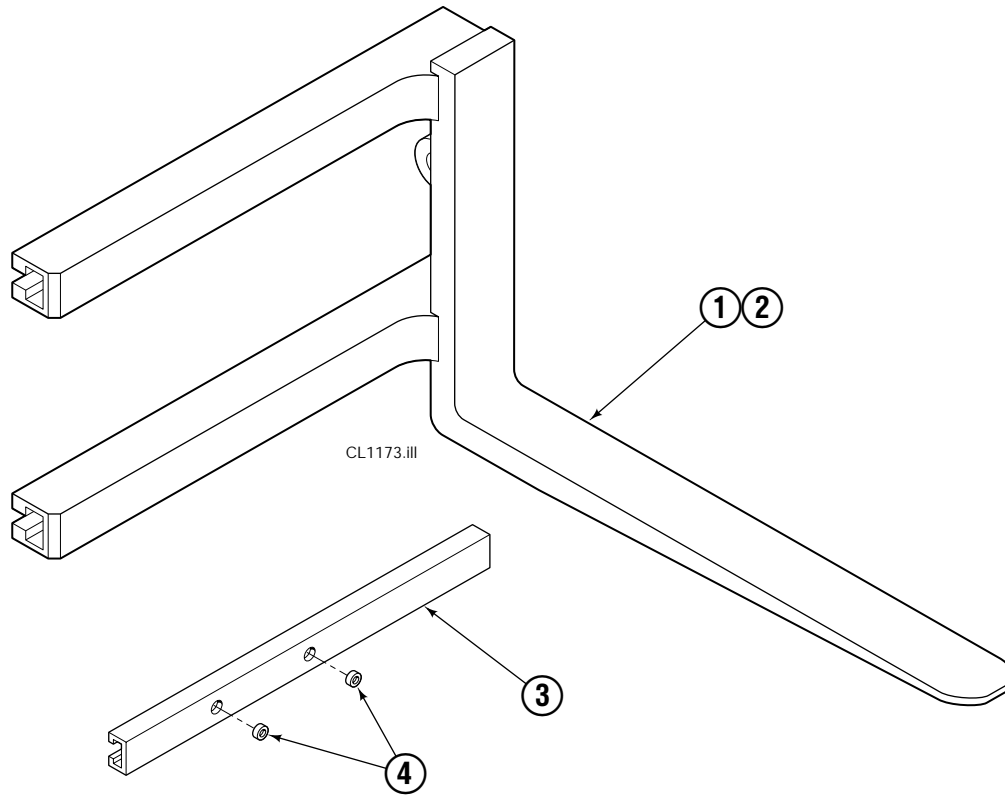
Hose Group

Rear Mounted Valve



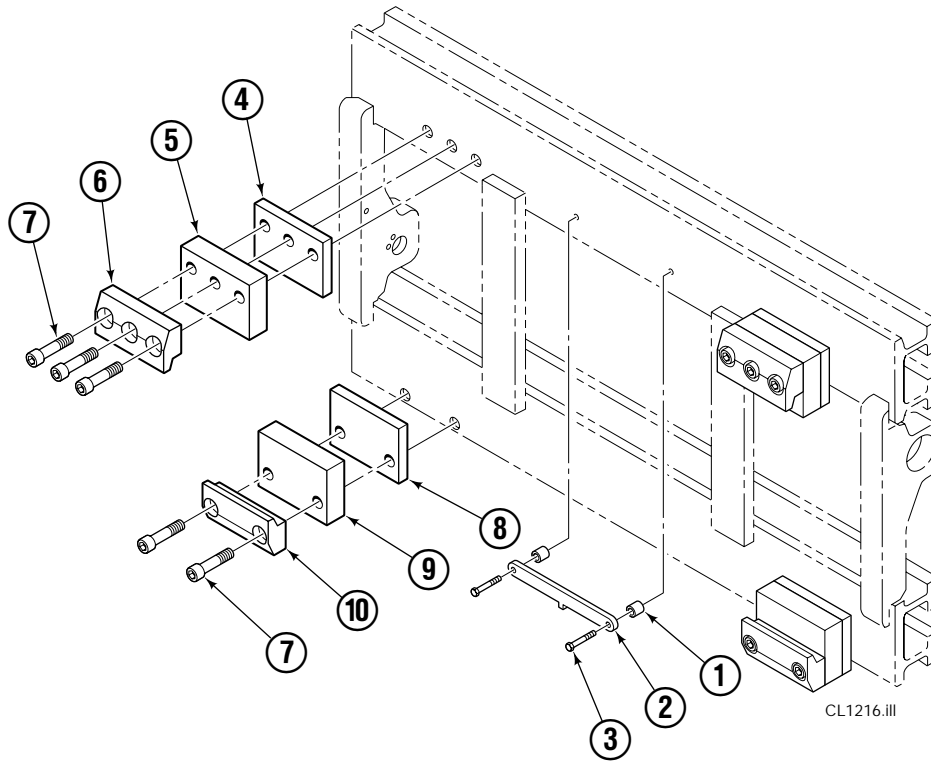
70F				
REF	QTY	Class III PART NO.	Class IV PART NO.	DESCRIPTION
		1808130	—	Hose Group
1	1	1801859	1801863	Hose
2	1	1801860	1801864	Hose
3	1	1801861	1801865	Hose
4	1	1801862	1801866	Hose

Pallet Fork Arms

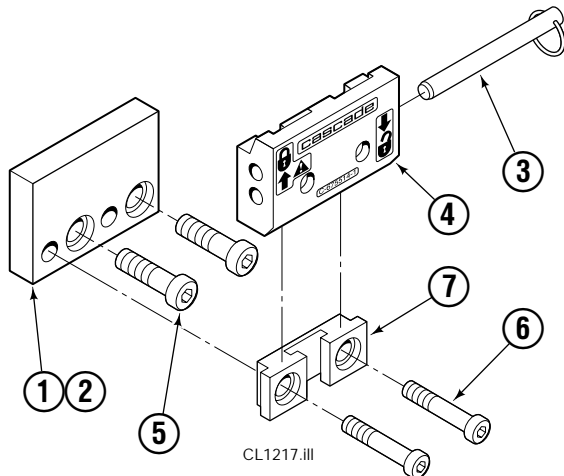


70F						
REF	QTY	Fork Arms – L x W (mm)				DESCRIPTION
		1070x125 PART NO.	1220x125 PART NO.	1370x125 PART NO.	1525x150 PART NO.	
1	1	1803234	1803235	1803236	1803237	Fork Arm, RH
2	1	1803268	1803269	1803270	1803271	Fork Arm, LH
3	2	1808077	1808077	1808077	1808077	Bearing
4	6	1800038	1800038	1800038	1800038	Retainer Plugs

Class III Mounting Group

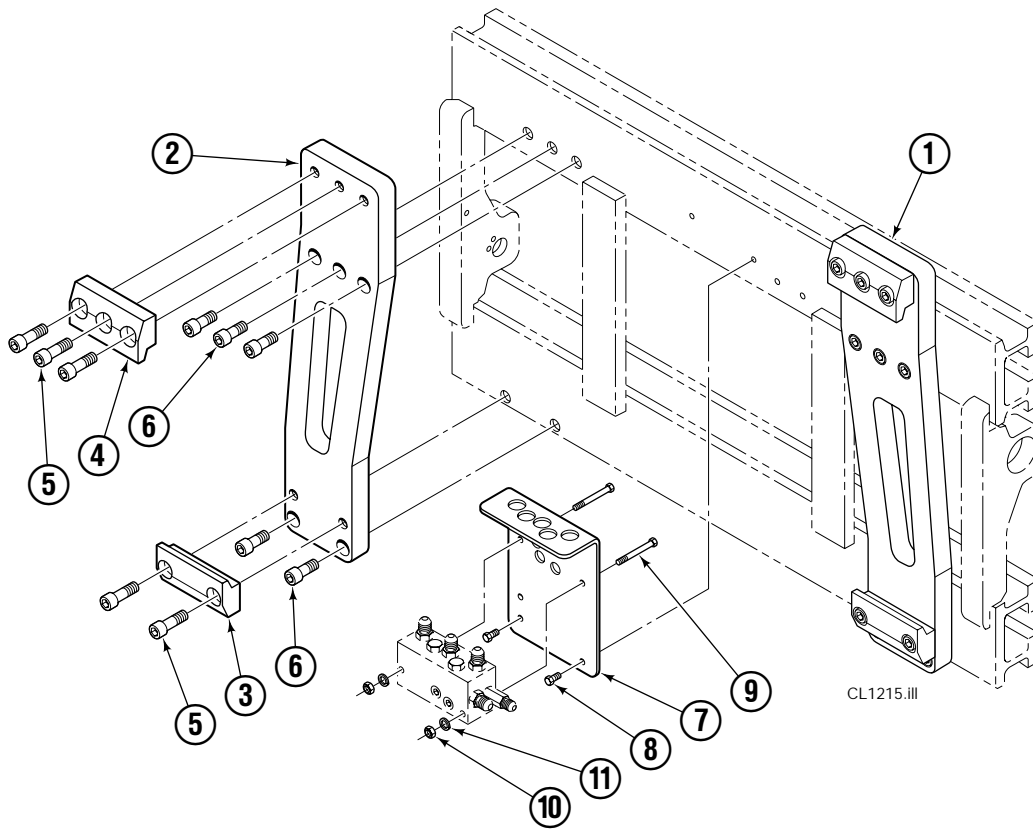


70F – Class III			
REF	QTY	PART NO.	DESCRIPTION
1	2	1800104	Spacer
2	1	1800315	Bracket
3	2	1808277	Capscrew
4	2	1800188	Spacer, 5mm
5	2	1800004	Packer, 25mm
6	2	1800020	Upper Hook
7	10	769584	Capscrew, M20 x 70
8	2	1800189	Spacer, 5mm
9	2	1800003	Packer, 25mm
10	2	1800023	Lower Hook



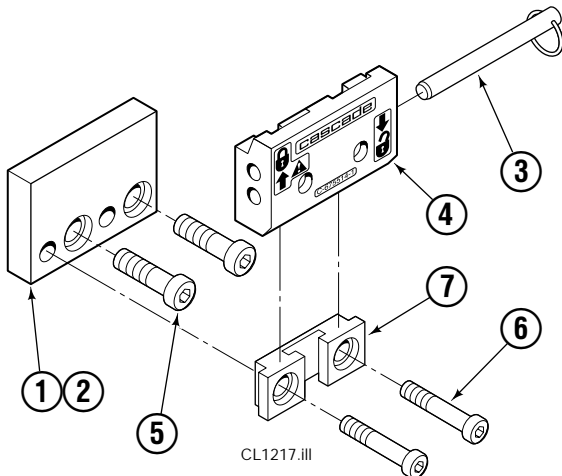
Class III – QD Hooks			
REF	QTY	PART NO.	DESCRIPTION
1	1	1800570	Adapter Plate, RH
2	1	1800571	Adapter Plate, LH
3	2	678832	Pin
4	2	675957	Lower Hook
5	4	775559	Capscrew
6	4	622467	Capscrew
7	2	675958	Guide

Class IV Mounting Group



70F – Class IV

REF	QTY	PART NO.	DESCRIPTION
1	1	1800607	Adapter, RH
2	1	1800608	Adapter, LH
3	2	1800454	Lower Hook
4	2	1800568	Upper Hook
5	10	769582	Capscrew, M20 x 50
6	10	769579	Capscrew, M20 x 40
7	1	1808049	Valve Mounting Plate
8	2	767961	Capscrew, M8 x 16
9	2	768532	Capscrew, M8 x 75
10	2	767414	Nut, M8
11	2	787398	Washer, M8



Class IV – QD Hooks

REF	QTY	PART NO.	DESCRIPTION
1	1	—	Adapter Plate, RH
2	1	—	Adapter Plate, LH
3	2	679831	Pin
4	2	679829	Lower Hook
5	4	622467	Capscrew
6	4	638601	Capscrew
7	2	679830	Guide

Do you have questions you need answered right now? Call your nearest Cascade Parts Department.

Cascade Corporation
2501 Sheridan Avenue
Springfield, OH 45505
Tel: 888-CASCADE (227-2233)
FAX: 888-329-0234

Cascade Canada Inc.
5570 Timberlea Blvd.
Mississauga, Ontario
Canada L4W-4M6
Tel: 905-629-7777
FAX: 905-629-7785

Cascade GmbH
D-41199 Monchengladbach
Klosterhofweg 52
Germany
Tel: 21-66-602091
FAX: 21-66-680947

Cascade Finland
01370 Vantas
Finland
Tel: 358-0-836-1925
FAX: 358-0-836-1935

**Cascade N.V.
European Headquarters**
P.O. Box 3009
1300 El Almere
Damsluisweg 56
1332 ED Almere
The Netherlands
Tel: 31-36-5492911
FAX: 31-36-5492964

**Cascade N.V.
Benelux Sales and Service**
P.O. Box 3009
1300 El Almere
Damsluisweg 56
1332 ED Almere
The Netherlands
Tel: 31-36-5492950
FAX: 31-36-5492974

Cascade (UK) Ltd.
15, Orgreave Crescent
Dore House Industrial Estate
Handsworth
Sheffield S13 9NQ
England
Tel: 742-697524
FAX: 742-695121

**Cascade Scandinavia
Hydraulik A.B.**
Muskötgatan 19, E8-9
S25466 Helsingborg
Sweden
Tel: 42-151135
FAX: 42-152997

Cascade Norway
Østerliveien 37A
1153 Oslo
Norway
Tel: 47-22-743160
FAX: 47-22-743157

Cascade France S.A.R.L.
11, Rue Jean Charcot
Zone Industrielle Sud or
B.P. 22
91421 Morangis Cedex
France
Tel: 1- 64547501
FAX: 1-9790584

Cascade Hispania S.A.
Avenida De La Fabregada, 7
Hospitalet De Llobregat
Barcelona
Spain
Tel: 3-335-5158
FAX: 3-335-4756

Cascade Japan Ltd.
5-5-41,
Torikai Kami
Settsu, Osaka
Japan, 566
Tel: 81-726-53-3490
FAX: 81-726-53-3497

Cascade Korea
Room 508, Pum Yang Bldg.
750-14, Bang Bac-Dong
Se-Cho Ku, Seoul
Korea
Tel: 2599-7131 ext. 512
FAX: 2533-8089

HYCO-Cascade Pty. Ltd.
1445 Ipswich Road
Rocklea,
Queensland 4107
Australia
Tel: 3-274-2722
FAX: 3-274-3456

HYCO-Cascade (NZ) Ltd.
15 Ra Ora Drive, East Tamaki
P.O. Box 38-440
Howick, Auckland
New Zealand
Tel: 9-273-9136
FAX: 9-273-9137

Cascade (Africa) Pty. Ltd.
P.O. Box 625, Isando 1600
60A Steel Road
Sparton, Kempton Park
South Africa
Tel: 975-9240
FAX: 394-1147

Cascade-Xiamen
Wanshan No. 1 Workshop
Huli Road
Xiamen 361006
Fujian, PRC
Tel: 592-562-4600
FAX: 592-562-4671

**Cascade (Singapore)
Trading Co.**
Four Seasons Park
Autumn Block - Apt. 1802
12 Cascaden Walk
Singapore
Tel: 65-834-1935
FAX: 65-834-1936

