

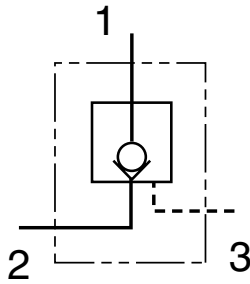


Installation Instructions

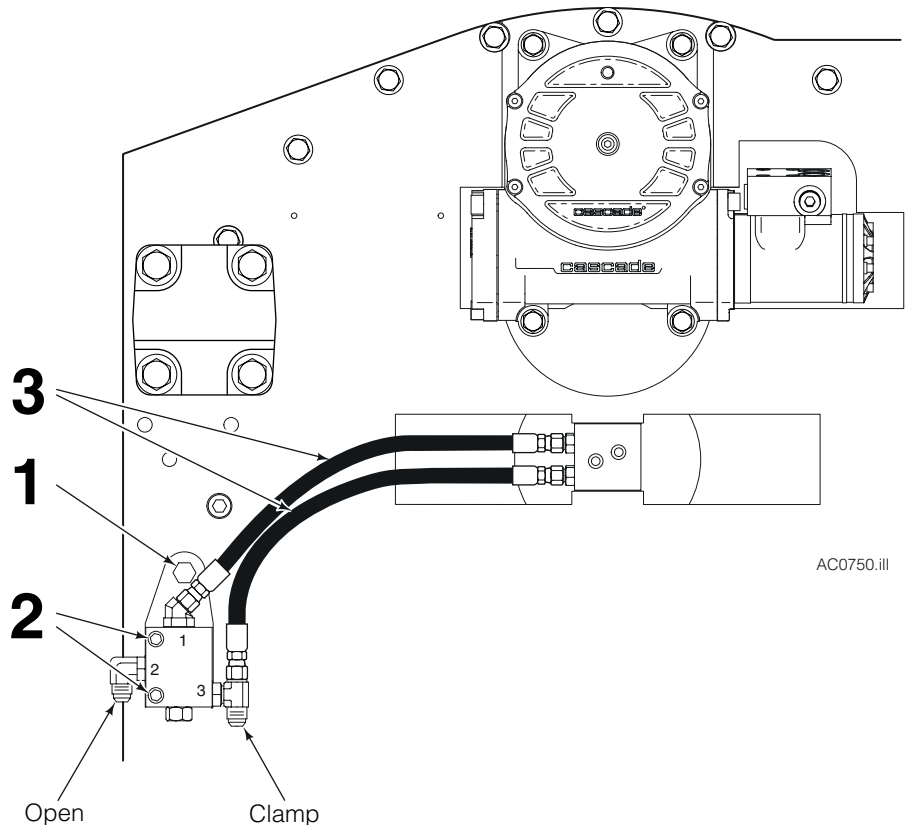
Paper Roll Clamp Check Valve Kit 6031200

This sheet provides installation instructions and replacement parts list for Cascade Clamp Check Valve Kit 6031200. The check valve prevents paper roll clamp arm drift when the clamp is positioned in the bilge position.

- 1** Remove the baseplate capscrew and discard. Install the bracket with a new capscrew and lockwasher. Tighten the capscrew to a torque of 65-75 ft.-lbs. (88-100 Nm) lubed.
- 2** Install the valve to the bracket. Tighten capscrews to a torque of 7-9 ft.-lbs. (9-12 Nm).
- 3** Install hoses and fittings per illustration.



AC0772.ill



AC0750.ill

Part No. 6031416

cascade[®]
corporation

For Technical Support . . .

Call: 1-800-227-2233

OR

Write: Cascade Corporation, P.O. Box 20187, Portland, OR 97294

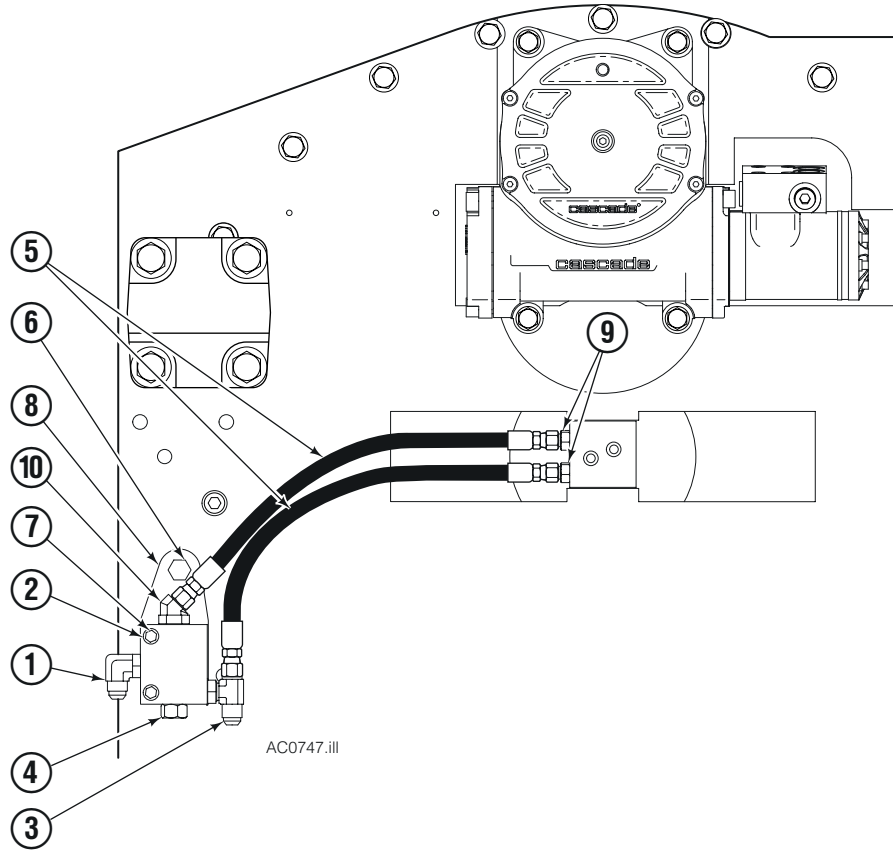
To Order Parts . . .

Call: 1-888-227-2233

OR

Write: Cascade Corporation, 2501 Sheridan Ave., Springfield, OH 45505

Parts List



REF	QTY	PART NO.	DESCRIPTION
		6031200	Check Valve Kit
1	1	601250	Fitting, 8-8
2	2	6287	Lockwasher, 5/16 in.
3	3	6029488	Fitting, 8-8
4	2	6031202	Check Valve
5	4	6031267	Hose, No.8
6	4	633683	Capscrew, 1/2 x 2.25 GR8
7	4	678759	Capscrew, 5/16 x 1.75 GR5
8	4	6031414	Bracket
9	4	604511	Fitting, 6-6
10	4	611303	Fitting, 8-8