

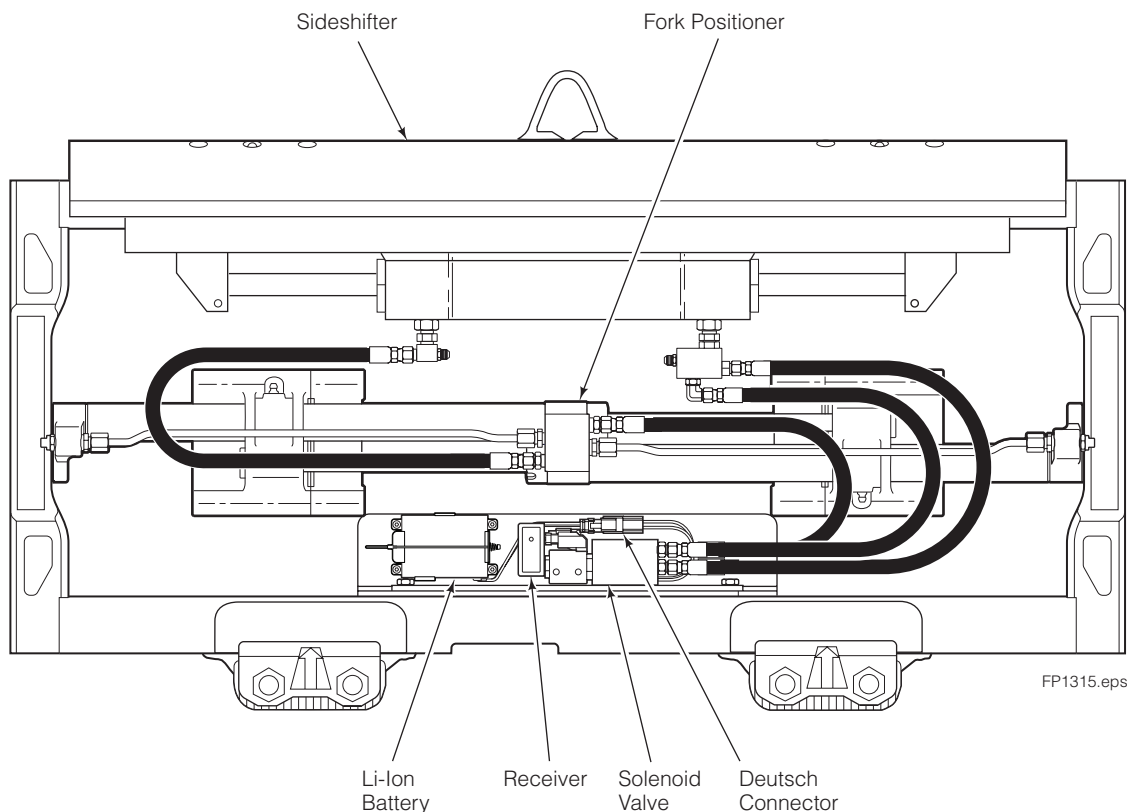
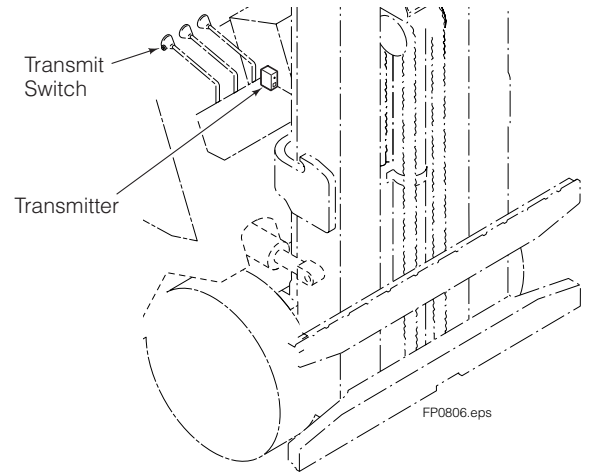


# Installation Instructions

## K-Series Fork Positioner Radio Frequency (RF) Hydraulic Control Kits 6805996, 6806000, 6806002, 6806003, 6806010 & 6806011

This sheet provides installation instructions and replacement parts list for Cascade Hydraulic Control Kits 6805996, 6806000, 6806002, 6806003, 6806010 and 6806011. The kit provides two function operation using a single function hydraulic supply and radio frequency (RF) solenoid actuation to select the sideshift or fork position functions. The attachment mounted solenoid is battery powered and driver activated by a remote transmitter mounted on the truck.

**CAUTION:** If the truck or attachment will be cleaned with a pressure washer, remove the battery and receiver from the attachment prior to cleaning. High pressure water can damage the battery and receiver.



**cascade**<sup>®</sup>  
**corporation**

**For Technical Support . . .**

Call: 1-800-227-2233 Fax: 1-888-329-8207

Internet: [www.cascorp.com](http://www.cascorp.com)

Write: Cascade Corporation, PO Box 20187, Portland, OR 97294

**To Order Parts . . .**

Call: 1-888-227-2233 Fax: 1-888-329-0234

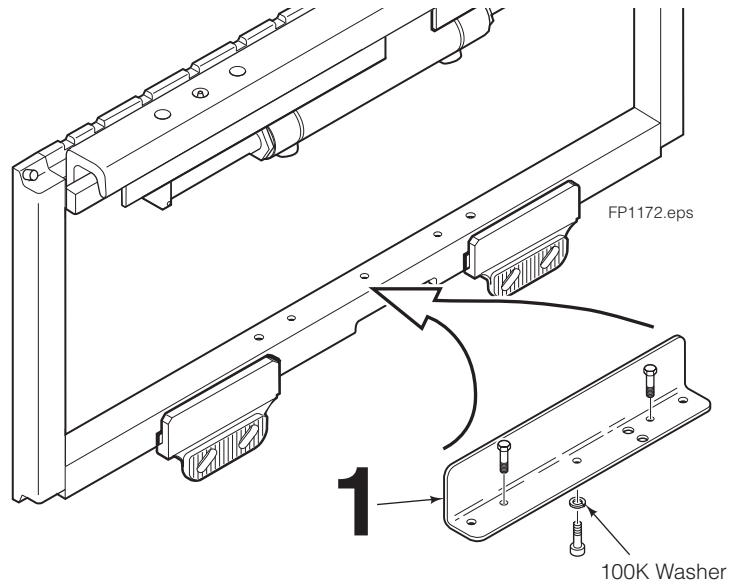
Internet: [www.cascorp.com](http://www.cascorp.com)

Write: Cascade Corporation, 2501 Sheridan Ave., Springfield, OH 45505

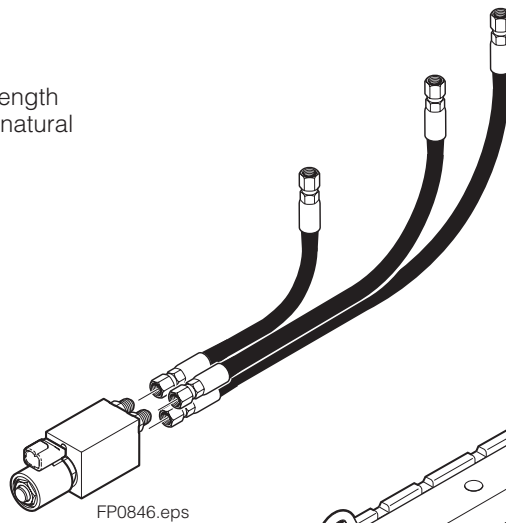
## Component Installation

- 1 Mount the guard to the sideshifter lower carriage bar. Tighten capscrews to a torque of 25 ft.-lbs. (35 Nm).

**NOTE:** 100K attachments will have an additional washer with the bottom capscrew.



- 2 Install the hoses to the valve fittings with the hose length orientation shown. Tighten the hose ends with the natural bend of the hoses upward.

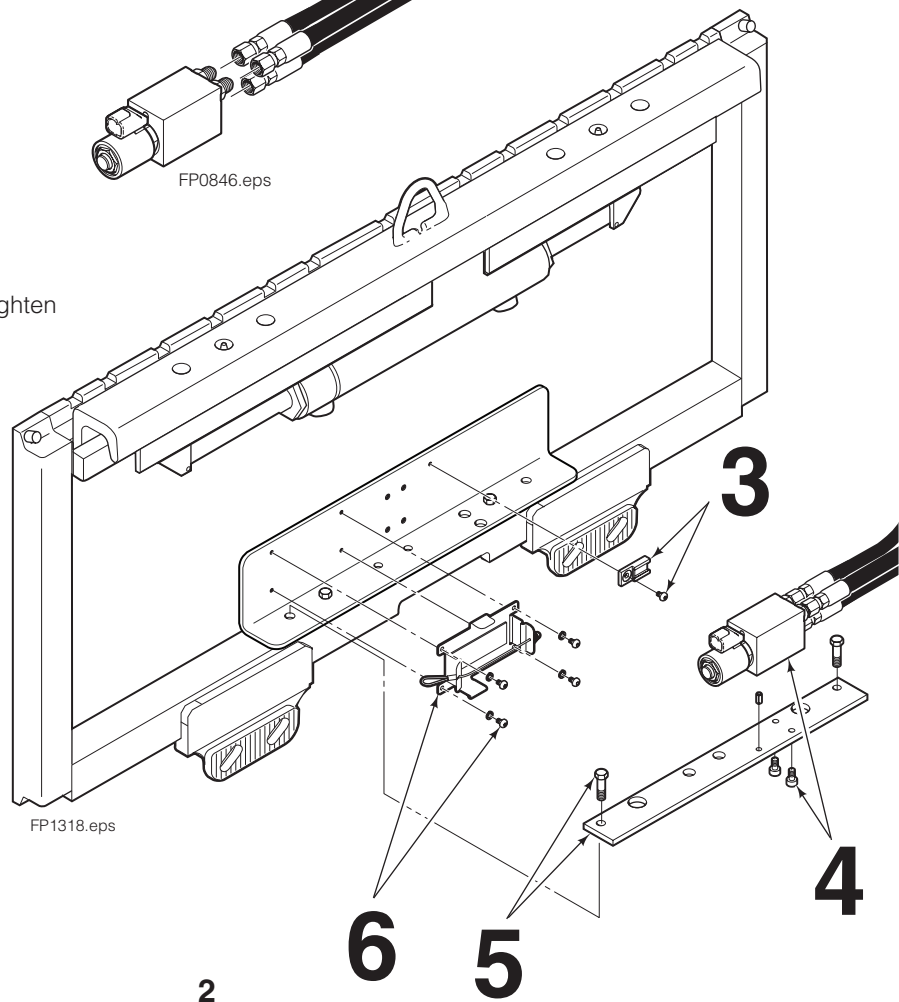


- 3 Mount the receiver clip to the guard.

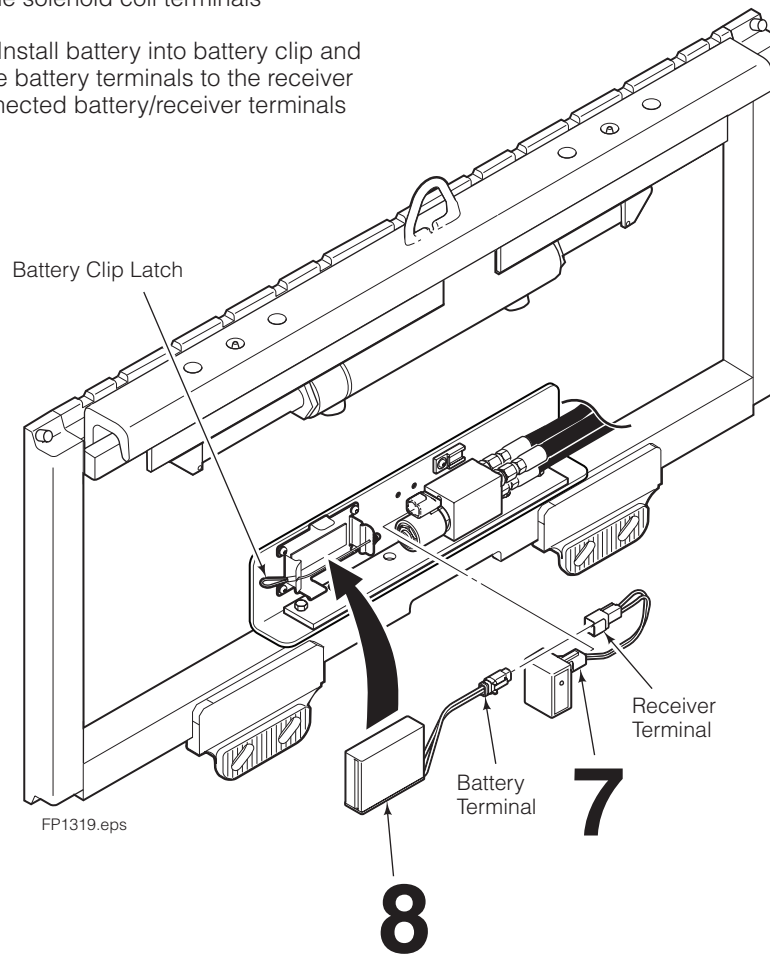
- 4 Install the solenoid valve to the bracket. Tighten capscrews to a torque of 4 ft.-lbs. (5 Nm).

- 5 Mount the bracket to the guard. Tighten capscrews to a torque of 25 ft.-lbs. (35 Nm).

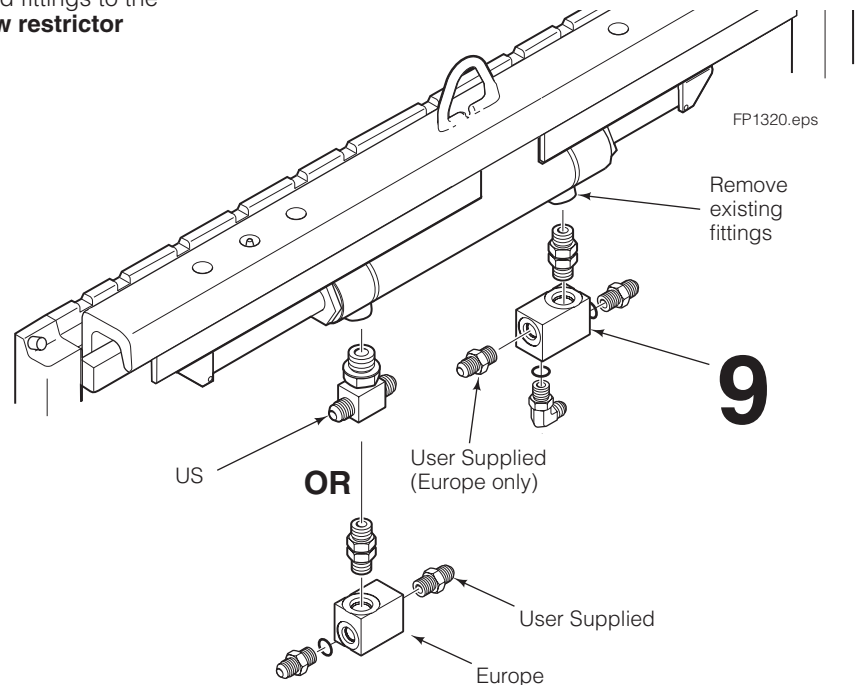
- 6 Mount the battery clip to the guard.



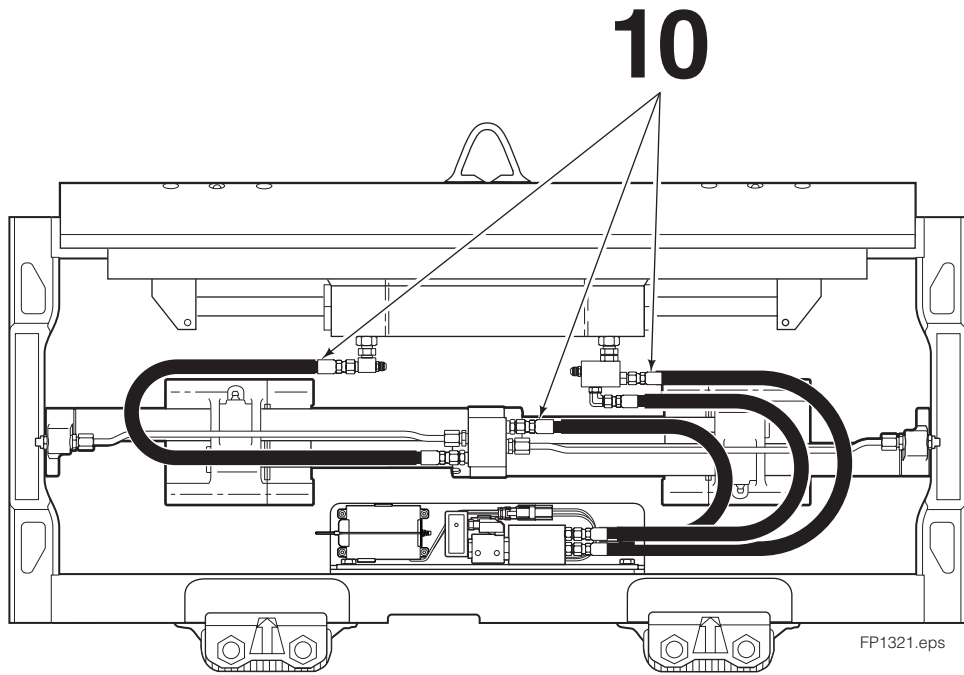
- 7 Connect the receiver to the solenoid coil terminals
- 8 Pull latch on battery clip. Install battery into battery clip and secure latch. Connect the battery terminals to the receiver terminals. Install the connected battery/receiver terminals into the receiver clip.



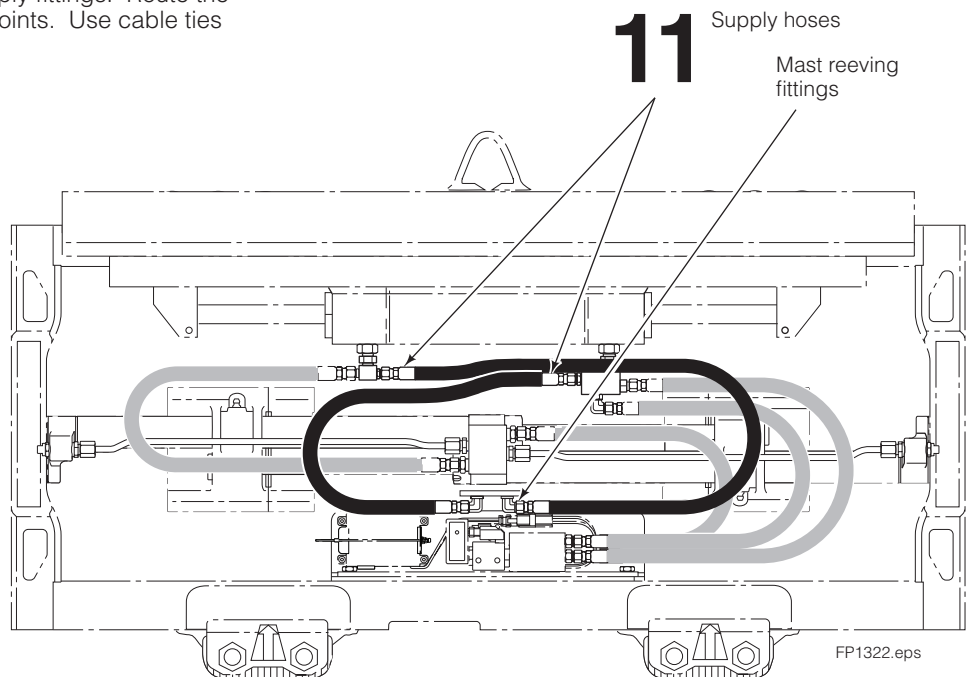
- 9 Remove any existing fittings from the sideshift cylinder ports. Install the new supply manifold(s) and fittings to the sideshift cylinder ports. **Do not remove flow restrictor washers from the cylinder ports.**



- 10** Install the kit hoses. Route the hoses to prevent wear and pinch points.



- 11** Install two supply hoses from the mast internal reeving fittings to the sideshift cylinder supply fittings. Route the hoses to prevent wear and pinch points. Use cable ties as required.



Supply Hose Kits	Part No.
JIC Fittings	6055928
O-Ring Face Seal Fittings	6055932

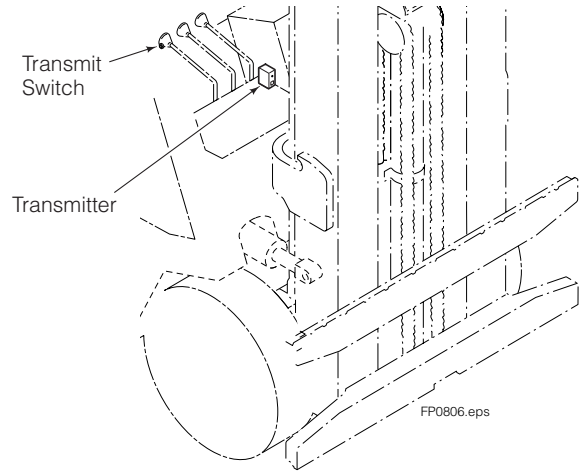
## Transmitter Installation

**1** Install the transmitter above dashboard in an easy to view and accessible location for the driver. Provide at least 8 in. (20 cm) clearance between the driver and transmitter.

**IMPORTANT:** The transmitter must not be co-located or operating in conjunction with any other antenna or transmitter.

**2** Connect the transmitter red wire to a switched terminal on the truck fuse block. Connect the black wire to chassis ground. Connect the Green and White wires to a control knob transmit switch. The Orange wire is not used for this application. Use Cascade Control Knob Kit 673130 or Switch Kit 6014880.

**IMPORTANT:** The resistor connected to the red wire is for use on trucks operating at 31V to 80V. Remove the resistor on trucks operating at 30V or less.



## Operation

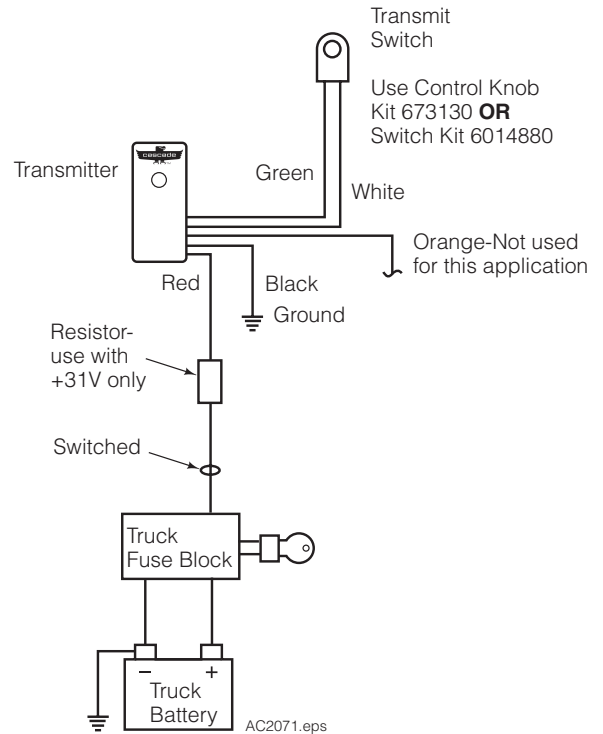
Verify that the transmitter has been properly connected to truck battery and receiver is plugged into the battery. The light on the transmitter and receiver will operate as follows:

No signal light: Check transmitter supply voltage. If transmitter voltage is not the problem, install charged battery on the receiver.

Solid/flashing green: Transmitter and receiver have adequate power and are working properly.

Solid/flashing red: Receiver battery is low, replace with charged battery.

**NOTE:** After one hour of inactivity, the receiver goes into sleep mode to conserve power. Press and hold the transmit switch for two seconds to wake the unit for operation.



## Battery

**NOTE:** Charge new batteries prior to use.

Chargers available are listed:

Location	Battery Charger
	Part No.
North America	6079239
Australia	6079700
United Kingdom	6079701
Europe	6079699

Voltage switch on the charger should be set to 10.8V/11.1V.



# Hydraulic Control Kit – US

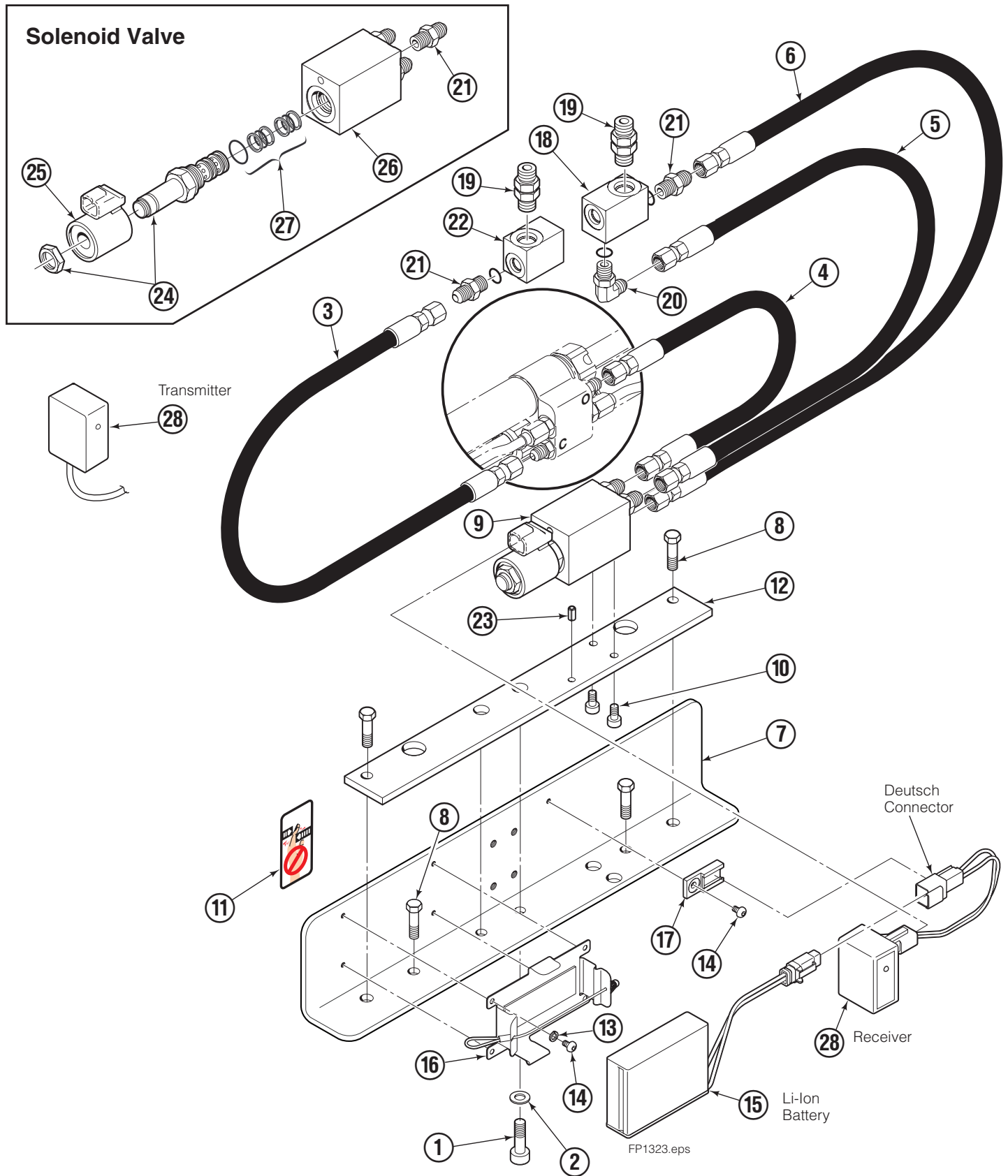
REF	QTY	55K PART NO.	65K PART NO.	100K PART NO.	DESCRIPTION
		6805996	6806002	6806010	RF Hydraulic Control Kit – 2.4 GHz
1	1	767611	767611	768814	Capscrews, M10
2	1	–	–	787383	Washer, M10
3	1	6050405	6064656	6064656	Hose
4	1	6050725	6050052	6050052	Hose
5	1	6050052	6064656	6064656	Hose
6	1	6050405	6064643	6064643	Hose

## COMMON COMPONENTS

REF	QTY	PART NO.	DESCRIPTION
7	1	6076117	Guard Plate
8	4	787373	Hex Capscrew, M8 x 25
9	1	6052236	Solenoid Valve
10	2	768785	Hex Capscrew, M6 x 10
11	2	665595	Decal
12	1	6076112	Mounting Bar
13	4	685899	Lockwasher, M4
14	5	6076098	Buttonhead Capscrew, M4 x 6
15	2	6075736	Li-Ion Battery, 12V – Deutsch Connector
16	1	6094986	Clip Assembly
17	1	6079201	Attachment Clip
18	1	6050638	Fitting, Tee
19	5	617915	Fitting, No. 4 ■ ●
20	1	617917	Fitting , 90 Degree, No. 4 ■
21	1	201671	Connector, No. 4-6 ■
22	1	6050411	Manifold ■
23	1	768991	Roll Pin, 5 x 10 mm ●
24	1	6008166	Solenoid Cartridge ●
25	1	6054451	Solenoid Coil ●
26	1	6052237	Valve Body ●
27	1	6126457	Service Kit ●
28	1	6068961	RF Transmission Kit – Deutsch Connector ◆

- Included in Manifold Assembly 6050615.
- Included in Solenoid Valve Assembly 6052236.
- ◆ Includes Transmitter and Receiver.

# Hydraulic Control Kit – Europe



# Hydraulic Control Kit – Europe

REF	QTY	55K PART NO.	65K PART NO.	100K PART NO.	DESCRIPTION
		6806000	6806003	6806011	RF Hydraulic Control Kit – 2.4 GHz
1	1	767611	767611	768814	Capscrews, M10
2	1	–	–	787383	Washer, M10
3	1	6050405	6064656	6064656	Hose
4	1	6050725	6050052	6050052	Hose
5	1	6050052	6064656	6064656	Hose
6	1	6050405	6064643	6064643	Hose

## COMMON COMPONENTS

REF	QTY	PART NO.	DESCRIPTION
7	1	6076117	Guard Plate
8	4	787373	Hex Capscrew, M8 x 25
9	1	6052236	Solenoid Valve
10	2	768785	Hex Capscrew, M6 x 10
11	2	665595	Decal
12	1	6076112	Mounting Bar
13	4	685899	Lockwasher, M4
14	5	6076098	Buttonhead Capscrew, M4 x 6
15	2	6075736	Li-Ion Battery, 12V – Deutsch Connector
16	1	6094986	Clip Assembly
17	1	6079201	Attachment Clip
18	1	6059917	Manifold ■
19	2	201671	Connector, No. 4-6 ■ ▲
20	1	617917	Fitting , 90 Degree, No. 4 ■
21	5	617915	Fitting, No. 4 ■ ▲ ●
22	1	6059969	Manifold ▲
23	1	768991	Roll Pin, 5 x 10 mm ●
24	1	6008166	Solenoid Cartridge ●
25	1	6054451	Solenoid Coil ●
26	1	6052237	Valve Body ●
27	1	6126457	Service Kit ●
28	1	6068961	RF Transmission Kit – Deutsch Connector ◆

- Included in Manifold Assembly 6060003.
- ▲ Included in Manifold Assembly 6060004.
- Included in Solenoid Valve Assembly 6052236.
- ◆ Includes Transmitter and Receiver.

**Do you have questions you need answered right now?**

Call your nearest Cascade Service Department.

Visit us online at [www.cascorp.com](http://www.cascorp.com)

**AMERICAS**

**Cascade Corporation  
U.S. Headquarters**  
2201 NE 201st  
Fairview, OR 97024-9718  
Tel: 800-CASCADE (227-2233)  
Fax: 888-329-8207

**Cascade Canada Inc.**  
5570 Timberlea Blvd.  
Mississauga, Ontario  
Canada L4W-4M6  
Tel: 905-629-7777  
Fax: 905-629-7785

**Cascade do Brasil**  
Rua João Guerra, 134  
Macuco, Santos - SP  
Brasil 11015-130  
Tel: 55-13-2105-8800  
Fax: 55-13-2105-8899

**EUROPE-AFRICA**

**Cascade Italia S.R.L.  
European Headquarters**  
Via Dell'Artigianato 1  
37050 Vago di Lavagno (VR)  
Italy  
Tel: 39-045-8989111  
Fax: 39-045-8989160

**Cascade (Africa) Pty. Ltd.**  
PO Box 625, Isando 1600  
60A Steel Road  
Sparton, Kempton Park  
South Africa  
Tel: 27-11-975-9240  
Fax: 27-11-394-1147

**ASIA-PACIFIC**

**Cascade Japan Ltd.**  
2-23, 2-Chome,  
Kukuchi Nishimachi  
Amagasaki, Hyogo  
Japan, 661-0978  
Tel: 81-6-6420-9771  
Fax: 81-6-6420-9777

**Cascade Korea**  
121B 9L Namdong Ind.  
Complex, 691-8 Gojan-Dong  
Namdong-Ku  
Inchon, Korea  
Tel: +82-32-821-2051  
Fax: +82-32-821-2055

**Cascade-Xiamen**  
No. 668 Yangguang Rd.  
Xinyang Industrial Zone  
Haicang, Xiamen City  
Fujian Province  
P.R. China 361026  
Tel: 86-592-651-2500  
Fax: 86-592-651-2571

**Cascade India Material  
Handling Private Limited**  
No 34, Global Trade Centre  
1/1 Rambaugh Colony  
Lal Bahadur Shastri Road,  
Navi Peth, Pune 411 030  
(Maharashtra) India  
Phone: +91 020 2432 5490  
Fax: +91 020 2433 0881

**Cascade Australia Pty. Ltd.**  
1445 Ipswich Road  
Rocklea, QLD 4107  
Australia  
Tel: 1-800-227-223  
Fax: +61 7 3373-7333

**Cascade New Zealand**  
15 Ra Ora Drive  
East Tamaki, Auckland  
New Zealand  
Tel: +64-9-273-9136  
Fax: +64-9-273-9137

**Sunstream Industries  
Pte. Ltd.**  
18 Tuas South Street 5  
Singapore 637796  
Tel: +65-6795-7555  
Fax: +65-6863-1368

