

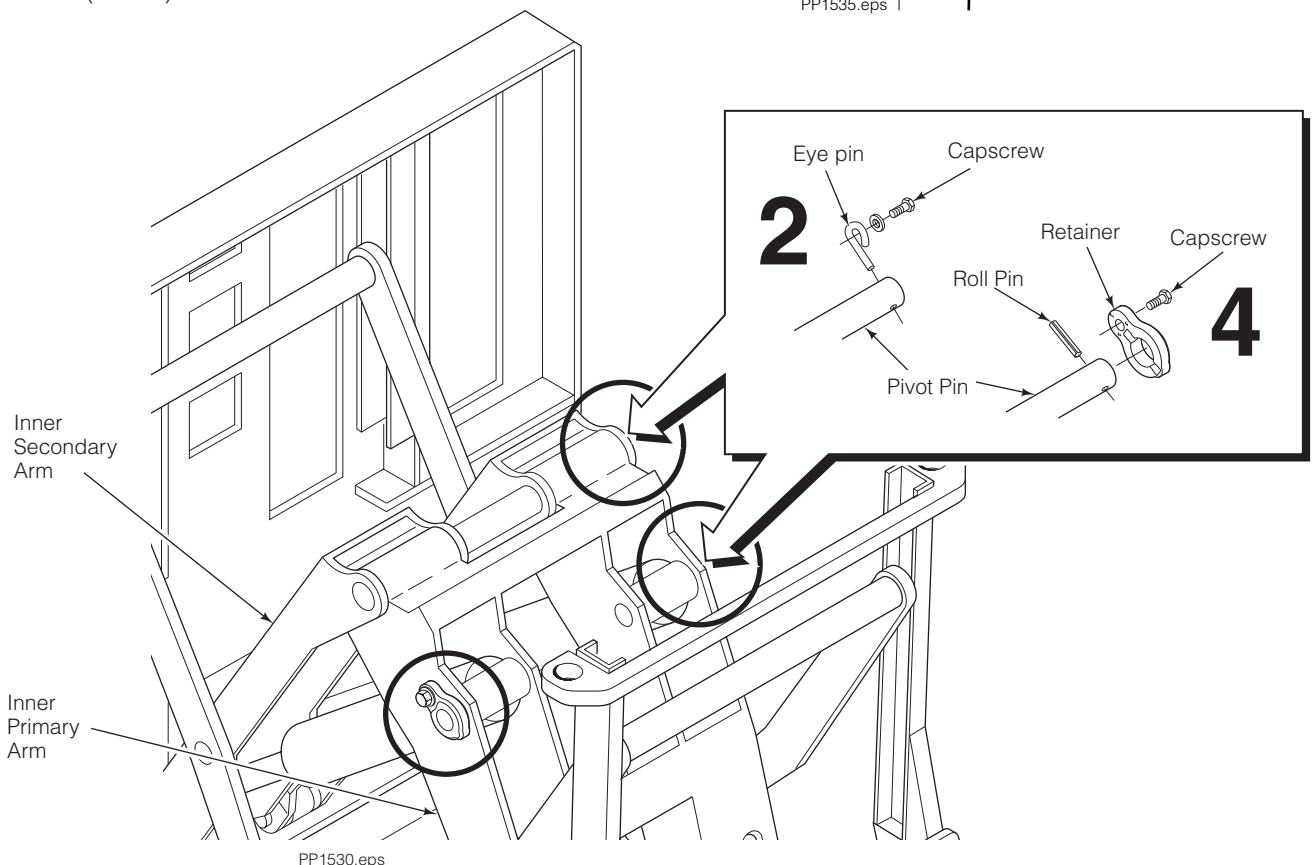
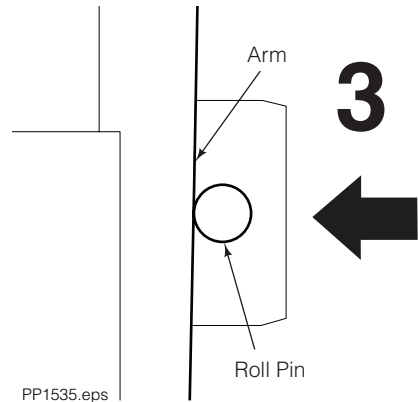


# Installation Instructions

## E-Series Push/Pull Eye Pin Replacement Service Kit 6051665

Use the following instructions to replace the Pivot pin retaining eye pins with retainers for E-Series Push/Pull attachments.

- 1 Extend faceplate to access inner secondary arms and inner primary arm.
- 2 Remove capscrews and eye pins from the three locations as shown.
- 3 Install the roll pin into the pivot pin. Tap the pivot pin with a rubber mallet until the roll pin contacts the arm.
- 4 Apply Loctite 242 (blue) to the service kit capscrews. Install the retainer and capscrews. Tighten capscrews to a torque of 20 ft.-lbs (27 Nm).



**NOTE:** This information should not be interpreted as the basis for warranty claims unless so designated.

**cascade**<sup>®</sup>  
**corporation**

**For Technical Support . . .**

Call: 1-800-227-2233 Fax: 1-888-329-8207

Internet: [www.cascorp.com](http://www.cascorp.com)

Write: Cascade Corporation, PO Box 20187, Portland, OR 97294

© Cascade Corporation 2007

**To Order Parts . . .**

Call: 1-888-227-2233 Fax: 1-888-329-0234

Internet: [www.cascorp.com](http://www.cascorp.com)

Write: Cascade Corporation, 2501 Sheridan Ave., Springfield, OH 45505

08-2007

Part Number 6080197