



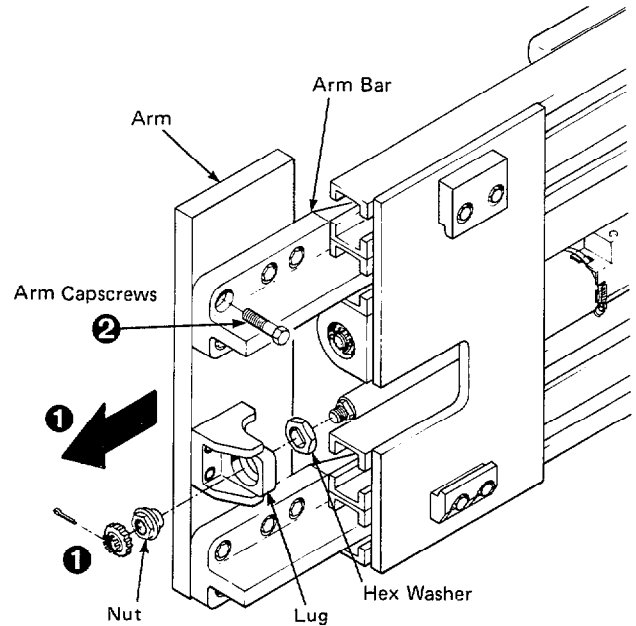
Installation Instructions

140D and 200D Clamp Arm Lubricator Service Kits

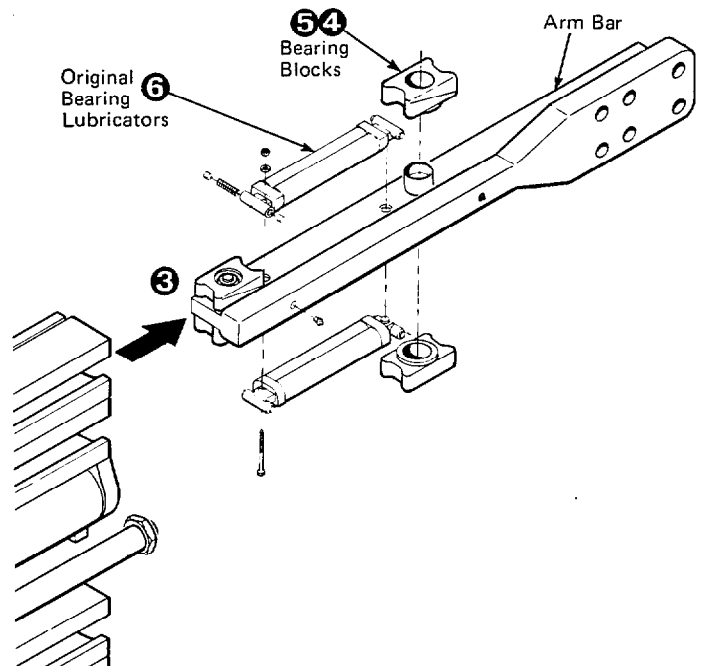
The following procedures describe the installation of new arm lubricator pads. The installation can be performed with the attachment on the truck. Each kit includes 2 lubricator pads and hardware to service one arm bar (4 kits required per attachment). Drilling and tapping a hole in each arm bar is required. Applications and service kits are shown below:

Attachment	Service Kit Part No.
140D Clamp-58 in. Wide Frame	204140
140D Clamp-78 in. Wide Frame	204141
200D Clamp-75 in. Wide Frame	204142
200D Clamp-106 in. Wide Frame	204143

- 1 Extend the arms outside the width of the frame. Lower the attachment to the floor. Remove the cotter pin, locking cap and nut retaining the cylinder rod to the arm lug.
- 2 Remove the arm capscrews.
- 3 Remove the arm from the clamp.



- 4 Pull the arm bars outward to remove the bearing blocks from the stub shafts.
- 5 Inspect the bearing blocks for wear on the side surfaces. If the side lubrication grooves are worn away, the bearing should be replaced.
- 6 Remove the original bearing lubricators from the arm bars (if equipped).
- 7 Remove all grease from the arm bars.



Part No. 204145

cascade®

For Technical Assistance . . .

Call: 1-800-CASCADE or 503-669-6300

OR

Write: Cascade Corp., P.O. Box 20187, Portland, OR 97220

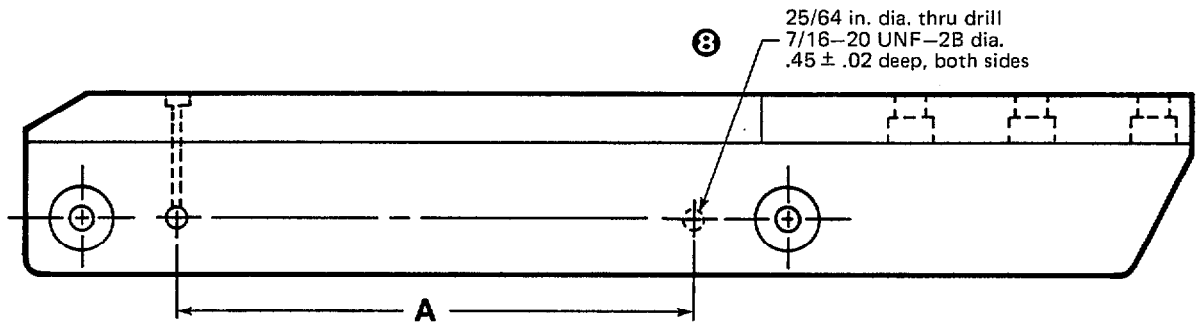
To Order Parts . . .

Call: 513-322-1199 or FAX: 513-325-9270

OR

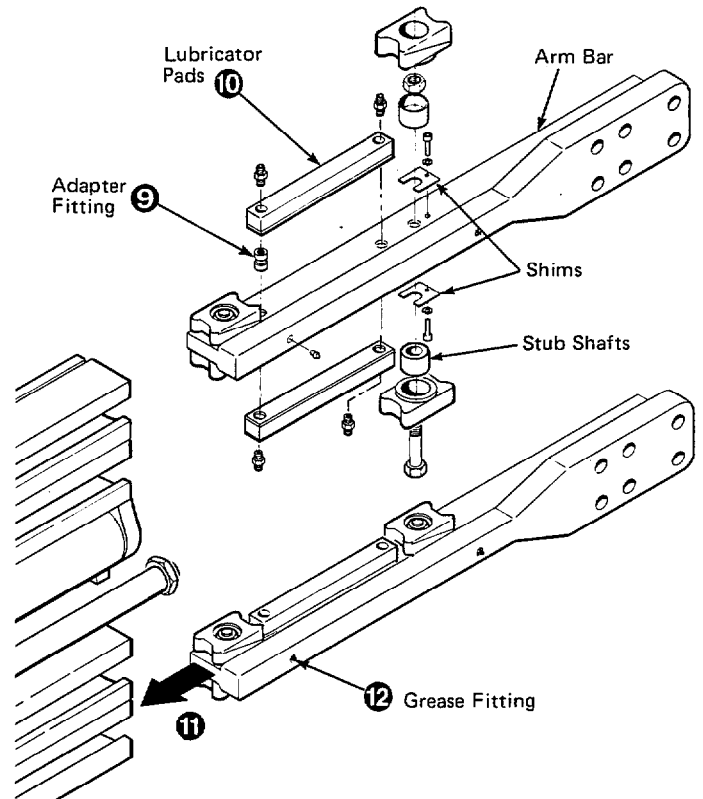
Write: Cascade Corp., 2501 Sheridan Ave., Springfield, OH 45505

- 8 Drill and tap a hole in the arm bar to fasten the lubricator pad in place.

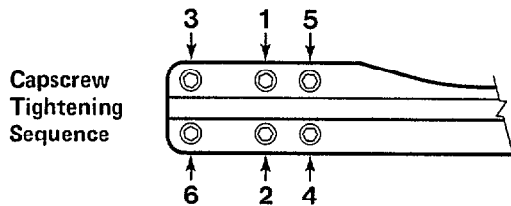


Attachment	Dimension A
140D Clamp-58 in. Wide Frame	12.72 in.
140D Clamp-78 in. Wide Frame	19.72 in.
200D Clamp-75 in. Wide Frame	21.26 in.
200D Clamp-106 in. Wide Frame	28.81 in.

- 9 Install the adapter fitting to the inner arm bar lube hole.
- 10 Install the new lubricator pads to the arms using the fittings (without O-rings) provided.
- 11 Install the arms into the frame using the maximum number of shims under the stub shafts that allows unrestricted travel of the bearings in the frame. Use an equal number of shims under the top and bottom bearing blocks. Tighten the stub shaft capscrews to a torque of 250-280 ft.-lbs. (339-379 Nm).
- 12 Apply waterproof chassis grease (Whitmore Omni-Task EP2 or NLGI grade 2) to the arm bar lubricator grease fitting. When fully charged with chassis grease, the lubricator system provides continuous lubrication to the arm bar bearings and frame. Lube the arms every 200 hrs. of clamp service.
- 13 Fasten the arm to the arm bars. Lubricate the arm capscrew threads with chassis grease. Tighten the arm capscrews to one-half the torque value below, then tighten to the full torque value. A torque multiplier will be required. Use the tightening sequence shown below.



Torque Value: 650-680 ft.-lbs. (881-922 Nm).



- 14 Install the hex washer on the cylinder rod end with the beveled side facing the lug. Engage the rod end into the lug.
- 15 Install and tighten the rod end nut to a torque of 375-400 ft.-lbs. (508-542 Nm). Prevent the rod turning by using a wrench on the hex washer.

NOTE: The rod end nut is being tightened against the hex washer. The nut will not be tight against the arm lug. This looseness allows for cylinder alignment during clamping.

- 16 Install the locking cap and cotter pin.

