

OPERATOR'S GUIDE

Portable Digital Clamp Force Indicator

Manual Number 6094544

**cascade[®]
corporation**

Cascade is a Registered Trademark of Cascade Corporation

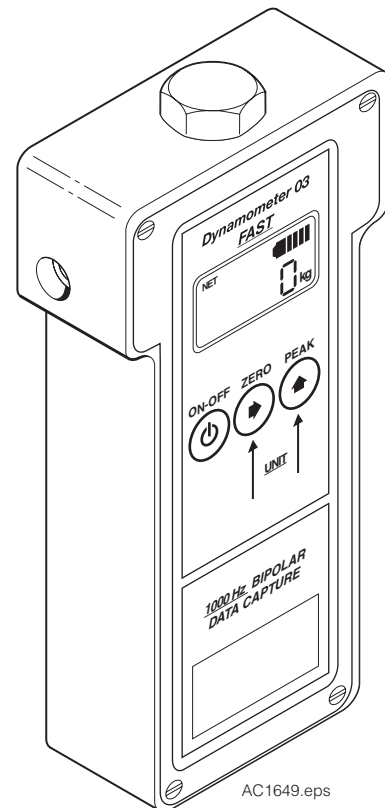
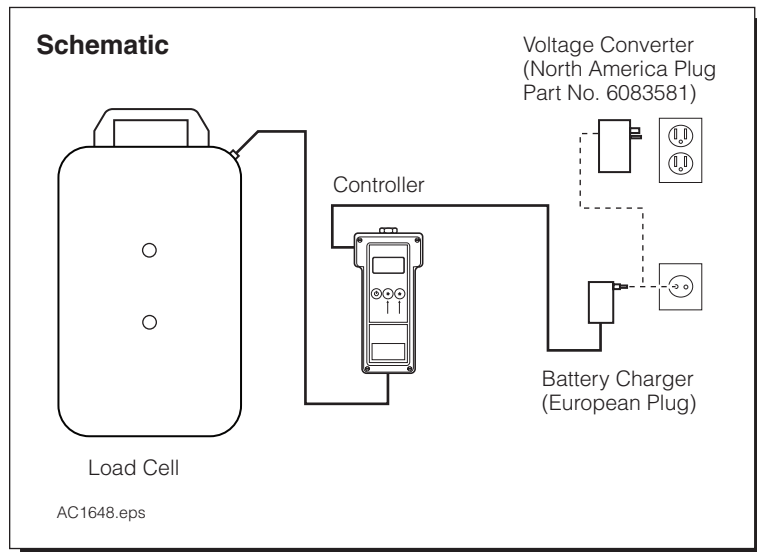
C ONTENTS

	Page
Introduction	<i>i</i>
Key Functions	1
Setup	1
Measure Clamp Force	2
Adjust Clamp Force	2
Other Features	3
Connections	3

I NTRODUCTION

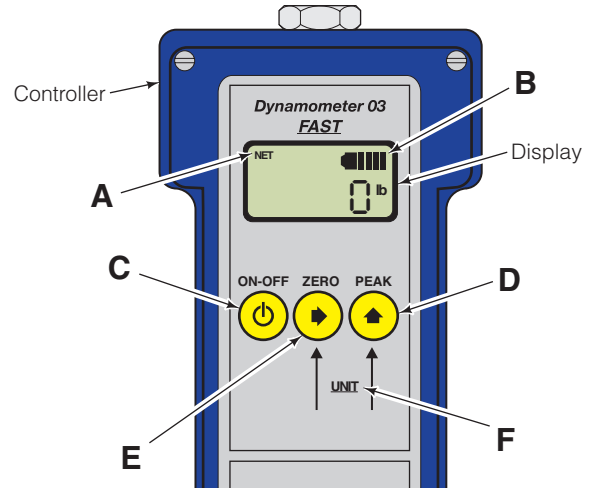
This guide provides installation and operation of Cascade Portable Clamp Force Indicator for measuring Roll Clamp force. This controller is a handheld numeric display control. The battery can be recharged through the battery charger supplied. Clamp force can be measured in various units: kg, lb, N and kN. See the schematic below for controller connections to the load cell and battery charging.

This controller can be used to determine clamp force retention and calibration for roll clamp attachments.



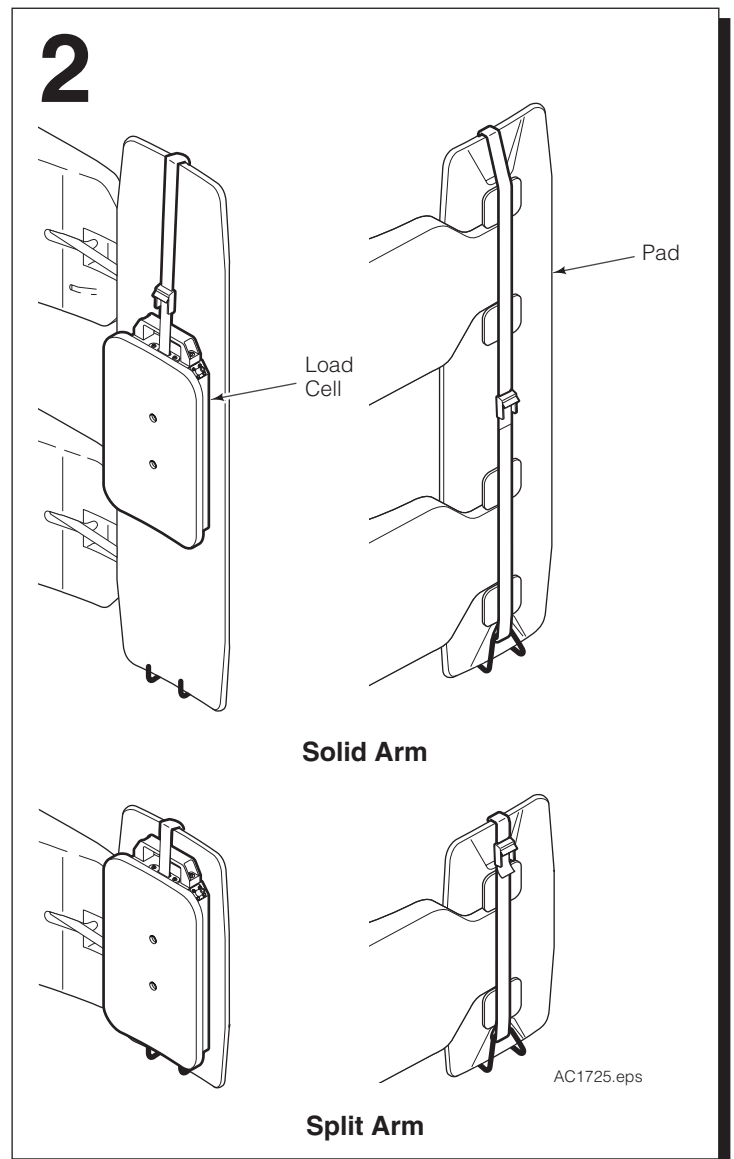
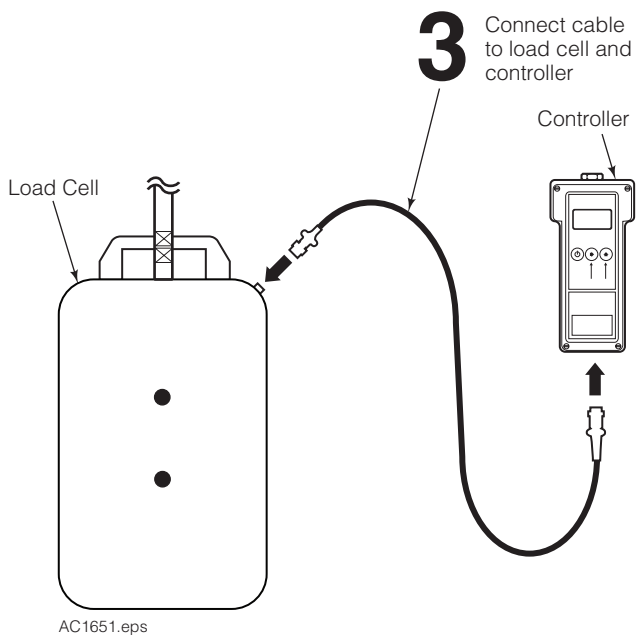
KEY FUNCTIONS & DISPLAY BASICS

- A NET (icon)** - Net value will show on the display.
- B BATTERY (Icon)** - Indicates the battery power level.
- C ON-OFF (Button)** - Turns controller on or off. Hold for three (3) seconds.
- D PEAK (Button)** - Gives the highest value reached.
- E ZERO (Button)** - Zeros the cell.
- F UNIT (icon)** - Indicates to press ZERO and PEAK Buttons to choose weight or force: kg, lb, N and kN.



SETUP

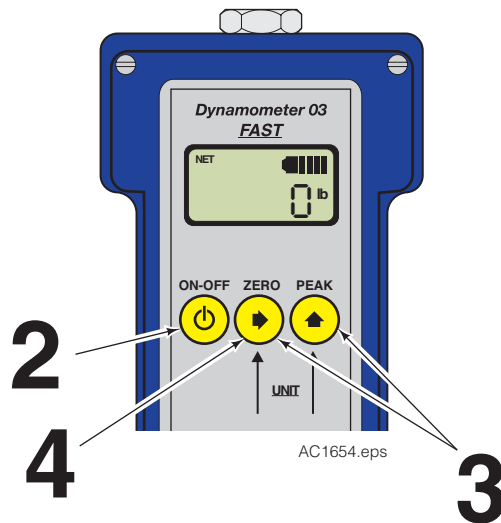
- 1 Position attachment arms to vertical roll handling position.
- 2 To install load cell, adjust strap so that the hook remains fixed at the bottom of the arm and the load cell is centered on the pad.
- 3 Connect cable to cell and controller.



M EASURE CLAMP FORCE

- 1 Make sure the load cell is aligned with the arm contact pad.
- 2 Press ON-OFF button on controller.
- 3 Press ZERO and PEAK buttons at the same time to select desired force/weight unit: kg, lb, N, kN.
- 4 Press ZERO to zero out any residual weight.
- 5 Slowly clamp the load. Clamp fully at 2/3rd throttle, holding the CLAMP lever several seconds.
- 6 Take note of the clamp force on the display and record the value. Release the clamp. **Determine if the clamp force value is correct and does not exceed recommended clamp force for rolls being handled.**

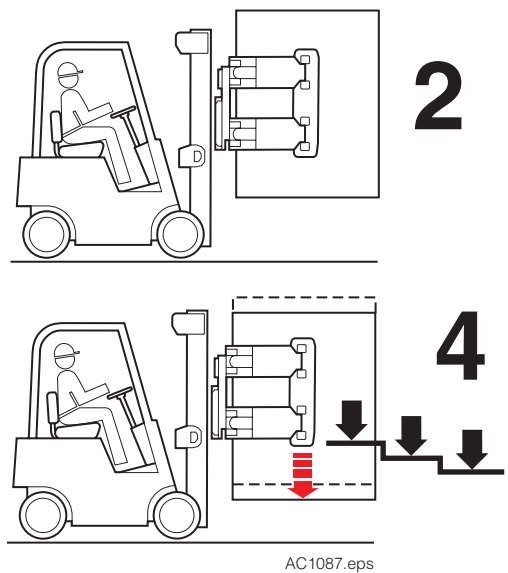
NOTE: Clamp force required to prevent crushing is commonly marked on the roll. Refer to the section "Adjust Clamp Force".



A DJUST CLAMP FORCE

NOTE: For an expanded recommended procedure for setting clamp force, see Cascade Technical Bulletin TB 284 (Part Number 6053675).

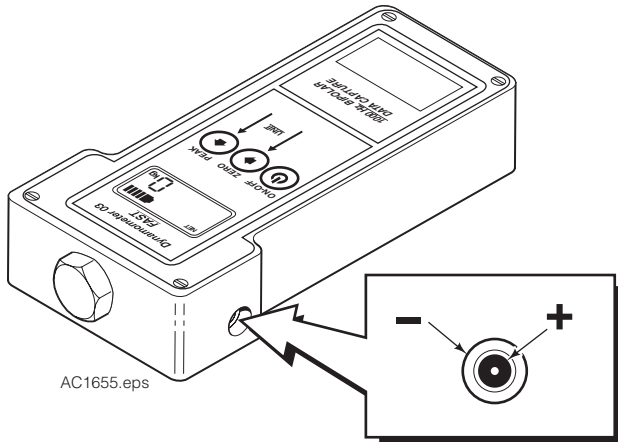
- 1 Install a 5000 psi (345 bar) pressure gauge at the truck CLAMP supply terminal.
- 2 Clamp on a typical roll in the vertical roll handling position and slowly lift roll. If slippage occurs, increase truck system pressure in 100 psi (7 bar) increments until roll does not slip.
- 3 Lift roll 3 ft. (1 meter) and quickly lower roll, alternately stopping and starting the carriage to determine one of the following:
 - If roll **does** slip, increase truck system pressure in 100 psi (7 bar) increments until roll stops slipping.
 - If the roll does not slip, the pressure may be set accurately. Go to Step 4.
- 4 Check rolls for damage to determine if there is excessive clamp force. If rolls are damaged, decrease truck system relief pressure in 100 psi (7 bar) increments until roll slips.
- 5 Test Roll Clamp in a variety of operating conditions representing normal day to day operation. If roll slippage is reported by the driver, increase system pressure 100 psi (7) bar. Test again for secure clamping.
- 6 Keep a log of any roll slippage, pressure adjustments, and hydraulic system maintenance.



Connections

Battery Charger - The controller uses a NiMH battery pack that is 4.8 V and 1600 mAh in rating.

CAUTION: Overcharging the battery can damage the battery.



Do you have questions you need answered right now? Call your nearest Cascade Service Department. Visit us online at www.cascorp.com

**Cascade Corporation
U.S. Headquarters**
2201 NE 201st
Fairview, OR 97024-9718
Tel: 800-CASCADE (227-2233)
FAX: 888-329-8207

Cascade Canada Inc.
5570 Timberlea Blvd.
Mississauga, Ontario
Canada L4W-4M6
Tel: 905-629-7777
FAX: 905-629-7785

Cascade GmbH
Niederwippekühl 1
58579 Schalksmühle
Germany
Tel: 02355-50900
FAX: 02355-509020

Cascade Finland
A. Petreliuksenkatu 3
01370 Vantaa
Finland
Tel: 09-8361925
FAX: 09-8361935

**Cascade N.V.
Benelux Sales and Service**
Damsluisweg 56
PO Box 3009
1300 El Almere
The Netherlands
Tel: 036-5492950
FAX: 036-5492974

Cascade Kenhar Ltd.
3 Kelbrook Road
Parkhouse Ind. Estate
Openshaw,
Manchester M11 2DD
England
Tel: 0800-243015
FAX: 0161-4384055

**Sales Scotland
Macade Systems Ltd.**
18 Melford Road
Righead Ind. Estate
Bellshill ML4 3LR
Scotland
Tel: 01698-845777
FAX: 01698-845888

Cascade (Africa) Pty. Ltd.
PO Box 625, Isando 1600
60A Steel Road
Sparton, Kempton Park
South Africa
Tel: 27-11-975-9240
FAX: 27-11-394-1147

Cascade Scandinavia AB
Hammarvägen 10
PO Box 124
S-56723 Vaggeryd
Sweden
Tel: 039-336950
FAX: 039-336959

**Cascade France
S.A.R.L. MHP**
1D Rue De Charaintru BP 18,
91360 Epinay-Sur-Orge
France
Tel: 01-6454-7500
FAX: 01-6454-7501

Cascade Hispania S.A.
Carrer 5, Sector C
Zona Franca Duanera
Poligono de la Zona Franca
08040 Barcelona, Spain
Tel: 93-264-07-30
FAX: 93-264-07-31

Cascade Italia S.R.L.
Via Dell'Artigianato 1
37050 Vago di Lavagno (VR)
Italy
Tel: 39-045-8989111
FAX: 39-045-8989160

Movimenta Lda.
Parque Industrial
Vale do Alecrim, Lote 108
2950-403 Palmela
Portugal
Tel: 351-212387340
FAX: 351-212387349

**Sales Switzerland
Fahrzeugbedarf**
8810, Horgen
Switzerland
Tel: 01-7279797
FAX: 01-7279798

Sales Poland
Targowa 35/61
03-728 Warszawa
Tel: 022-619 00 49
FAX: 022-619 00 49
Mobile Tel: 0501-27 29 55

Sales Russia
EMCG Material Handling
Equipment
Moscow
Tel: 095-795-2400
FAX: 095-795-2475
Email: emcg@emcg.ru

Cascade Japan Ltd.
5-5-41,
Torikai Kami
Settsu, Osaka
Japan, 566
Tel: 81-726-53-3490
FAX: 81-726-53-3497

Cascade Korea
121B 9L Namdong Ind.
Complex, 691-8 Gojan-Dong
Namdong-Ku
Inchon, 405-310 Korea
Tel: 82-32-821-2051
FAX: 82-32-821-2055

Cascade Australia
1445 Ipswich Road
Rocklea, QLD 4107
Australia
Tel: 1-800-227-223
FAX: 617-3373-7333

Cascade New Zealand
15 Ra Ora Drive
East Tamaki, Auckland
New Zealand
Tel: 64-9-273-9136
FAX: 64-9-273-9137

Cascade-Xiamen
No. 668 Yangguang Rd.
Xinyang Industrial Zone
Haicang, Xiamen City
Fujian Province
P.R. China 361026
Tel: 86-592-651-2500
FAX: 86-592-651-2571

**Sunstream Industries
Pte Ltd.**
No. 3 Tuas Link 1
2263
Singapore
Tel: 65-6863-3488
FAX: 65-6863-1368

**Cascade do Brasil
LTDA**
Rua João Guerra, 134
Macuco, Santos - SP
Brasil 11015-130
Tel: 55-13-2105-8800
Fax: 55-13-2105-8899

