



Rotational strength, even in the most demanding conditions.

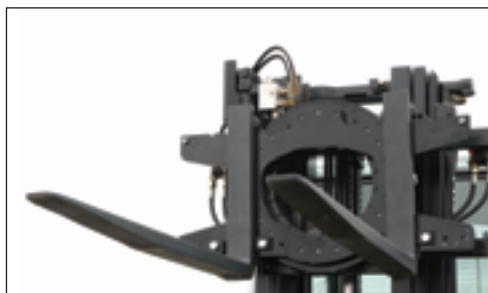
*The first
rotator built
specifically for
the fish
industry*

APPLICATIONS

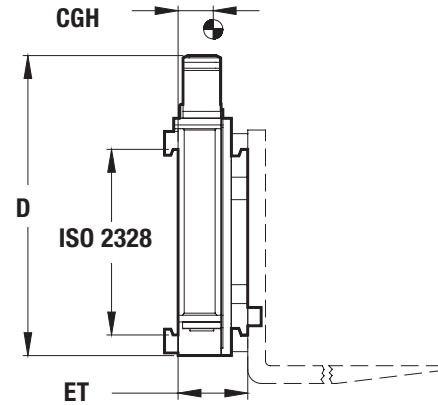
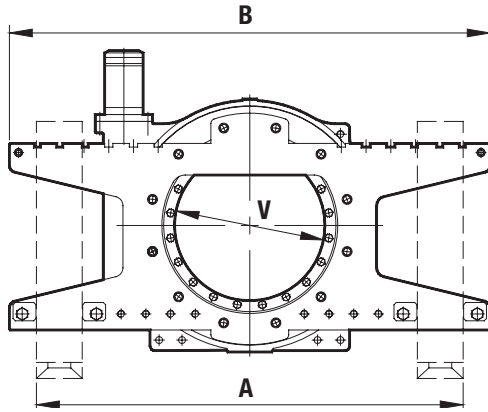
Designed for tough fishing port work where salt water and sub zero temperatures will damage normal handling equipment.

FEATURES

- Double Sealed Steel and Copper solid state ring gear ensures that grease is sealed into the ring gear and saltwater is locked out.
- Anti Corrosive Coating and Galvanized Forkbar creates a rust resistant finish.
- No need to grease moving parts
- Lost Load, ET minimized
- Optional QD mounting for quick change
- Long life direct drive 360 degree rotation
- Hydraulic Brake



High visibility through the unit



Model	Capacity @ load centre		ISO-2328	Dimensions			Max. Torque daN • m	Centre of gravity Horiz. HCG	Effective Thickness (mm) ET	Mass kg	D mm	V mm
	kg	mm		B (mm)	A min.	A max.						
DRL215D	1500	500	2	900	450	810	400	58	116	186	630	290
DRL215D	1500	500	2	980	450	890	400	60	116	191	630	290
DRL225D	2500	500	2	940	530	870	470	67	135	190	655	328
DRL225D	2500	500	2	1050	530	960	470	69	135	195	655	328
DRL334D	3400	500	3	1180	530	1060	880	74	145	280	786	392
DRL334D	3400	500	3	1310	530	1190	880	76	145	290	786	392
DRL465D	6500	600	4	1520	740	1370	1400	97	191	700	920	460
DRL465D	6500	600	4	1770	740	1620	1400	104	191	760	920	460

Note:

- Rotator Housing is corrosion resistant and hermetically sealed.

Model	Min. Flow	Recommended Flow	Max. Flow	Min. Pressure (Bar)	Hydraulic Functions	Truck Auxiliary
						Valves Required
DRL215D	20	25	35	140	1	1
DRL225D	20	35	45	140	1	1
DRL334D	20	40	47	140	1	1
DRL465D	30	45	55	140	1	1



Includes a valve and motor protection cover.